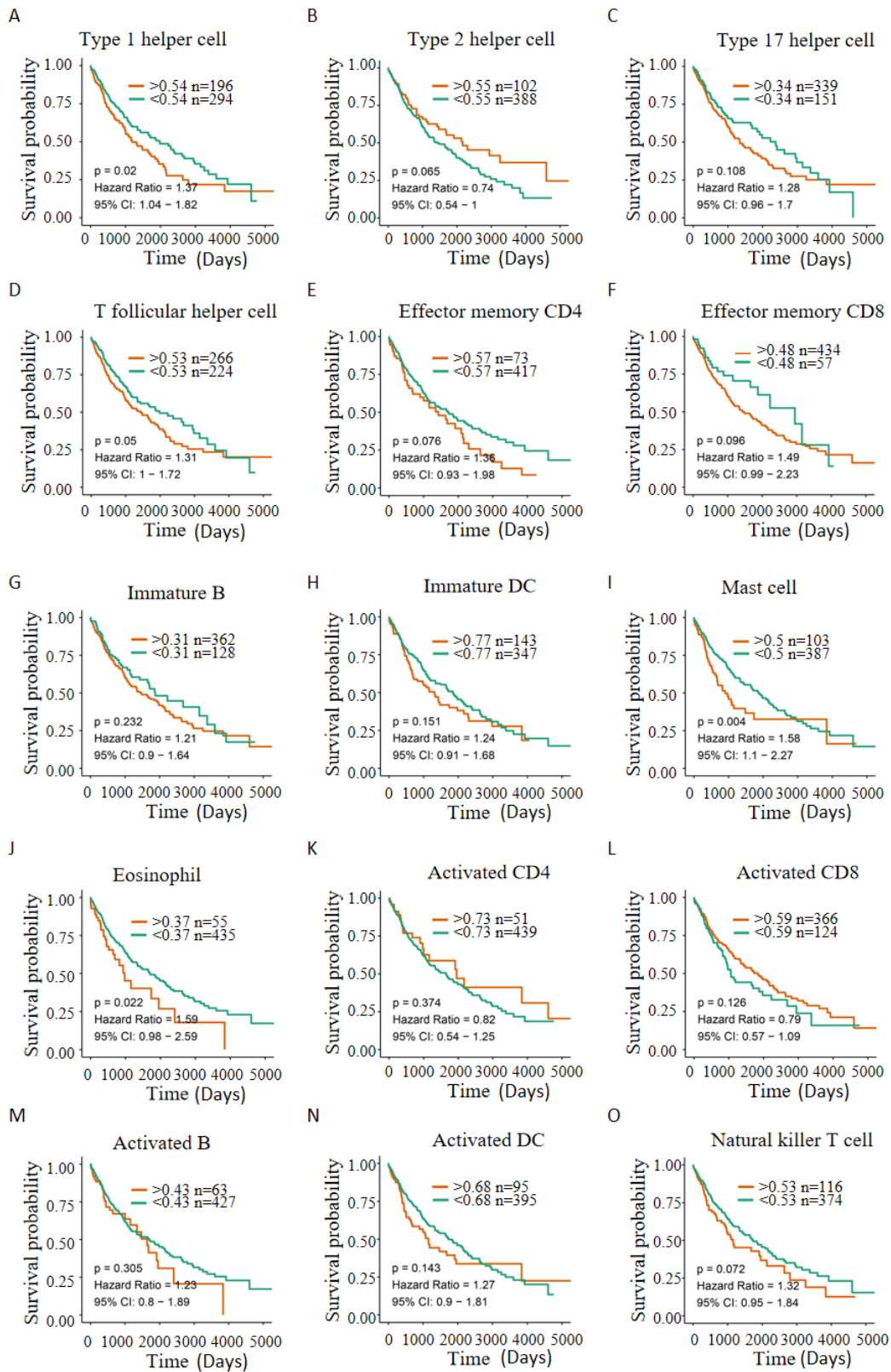


**Figure S1** (A-K) Kaplan-Meier curve of different immune modulators in LUSC. Hazard ratio with 95% CI and log rank P value were calculated.  $P < 0.05$  was considered significant.



**Figure S2 (A-O)** Kaplan-Meier curve of TIC distribution patterns in LUSC. Hazard ratio with 95% CI and log rank P value were calculated. P<0.05 was considered significant.