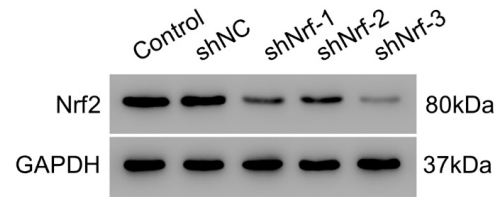


**Figure S1** Characterization of Kupffer cells. Kupffer cells were isolated and CD68 immunofluorescent staining was used to analyze their purity (scale bar: 50  $\mu$ m).



**Figure S2** Nrf2 interference in primary Kupffer cells. shRNA targeting Nrf2 (shNrf2) or negative control shRNA (shNC) was used to silence Nrf2 in primary mouse Kupffer cells. Western blots were used to confirm the silencing efficiency.

**Table S1** Target sequences of mouse Nrf2 shRNAs

shRNA	Target sequence
shNrf2-1	5' GCAGGACATGGATTGATT 3'
shNrf2-2	5' GCAAGACTTGGGCCACTTA 3'
shNrf2-3	5' CCTTGATCTTGAAGTCTT 3'

**Table S2** Primer sequences for real-time PCR

Gene	Forward primer	Reverse primer
<i>TGR5</i>	5' GGCAAGCCTCATCATCACC 3'	5' AAGTTGGGAGCCAAGTAGACG 3'
<i>iNOS2</i>	5' GAGCGAGTTGTGGATTGTC 3'	5' CCAGGAAGTAGGTGAGGG 3'
<i>Arg1</i>	5' GCTTGCGAGACGTAGACC 3'	5' CATCACCTTGCCAATCCC 3'
<i>GAPDH</i>	5' GGATTGTCTGGCAGTAGCC 3'	5' ATTGTGAAAGGCAGGGAG 3'

**Table S3** Antibody list

Primary antibody	Company	Catalog No.
TGR5	Abcam	Ab72608
TLR4	Abcam	Ab13556
HO-1	Abcam	ab13243
NF- $\kappa$ B	Abcam	Ab16502
Nrf2	Abcam	Ab92946
H3	Abcam	Ab1791
GAPDH	Cell Signaling Technology	#5174