

Figure S1 Data normalization. (A,B) Boxplot and PCA of microarray data before and after normalization, including GSE57338, GSE42955, GSE79962. PCA, principal component analysis.

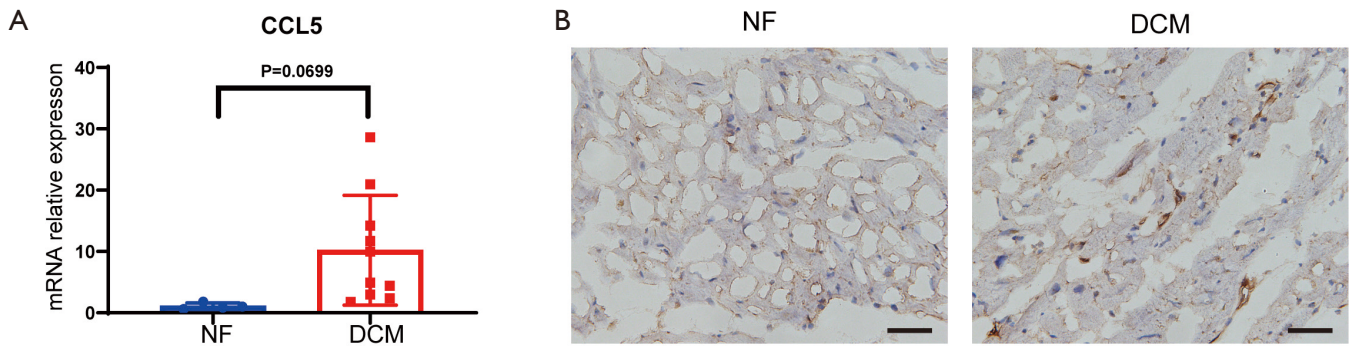


Figure S2 CCL5 expression in human heart tissues. (A,B) Detect the expression of DPT in NF and DCM by RT-PCR and immunohistochemistry. Bar =40 μ m; CCL5, C-C motif chemokine ligand 5; DPT, dermatopontin; NF, non-failing; DCM, dilated cardiomyopathy; RT-PCR real-time polymerase chain reaction.