

Supplementary

Table S1 Antibodies used in the text

Antibody	Company	Cat. No
PE anti-human CD56	BioLegend	318306
APC anti-human CD19	BioLegend	302212
FITC anti-human CD3	BioLegend	300306
PE anti-human CD8a	BioLegend	300908
APC anti-human CD4	BioLegend	300514
PE anti-human CD25	BioLegend	302606
FITC anti-human FOXP3	BioLegend	320106

PE, P-phycoerythrin; CD, cluster of differentiation; APC, allophycocyanin; FITC, fluorescein isothiocyanate; Foxp3, Forkhead box protein p3.

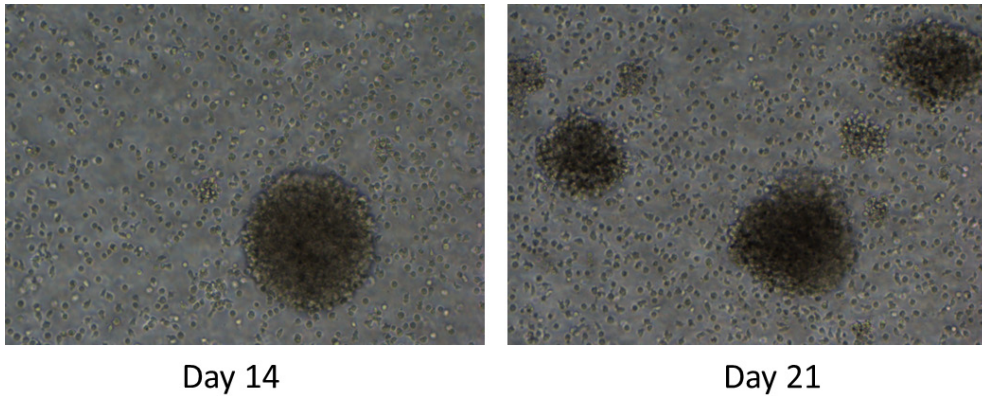


Figure S1 The morphology of Treg cells at the indicated time. Morphological analysis of Treg cells was performed using an inverted phase-contrast microscope (Olympus, Tokyo, Japan). 100× magnification.

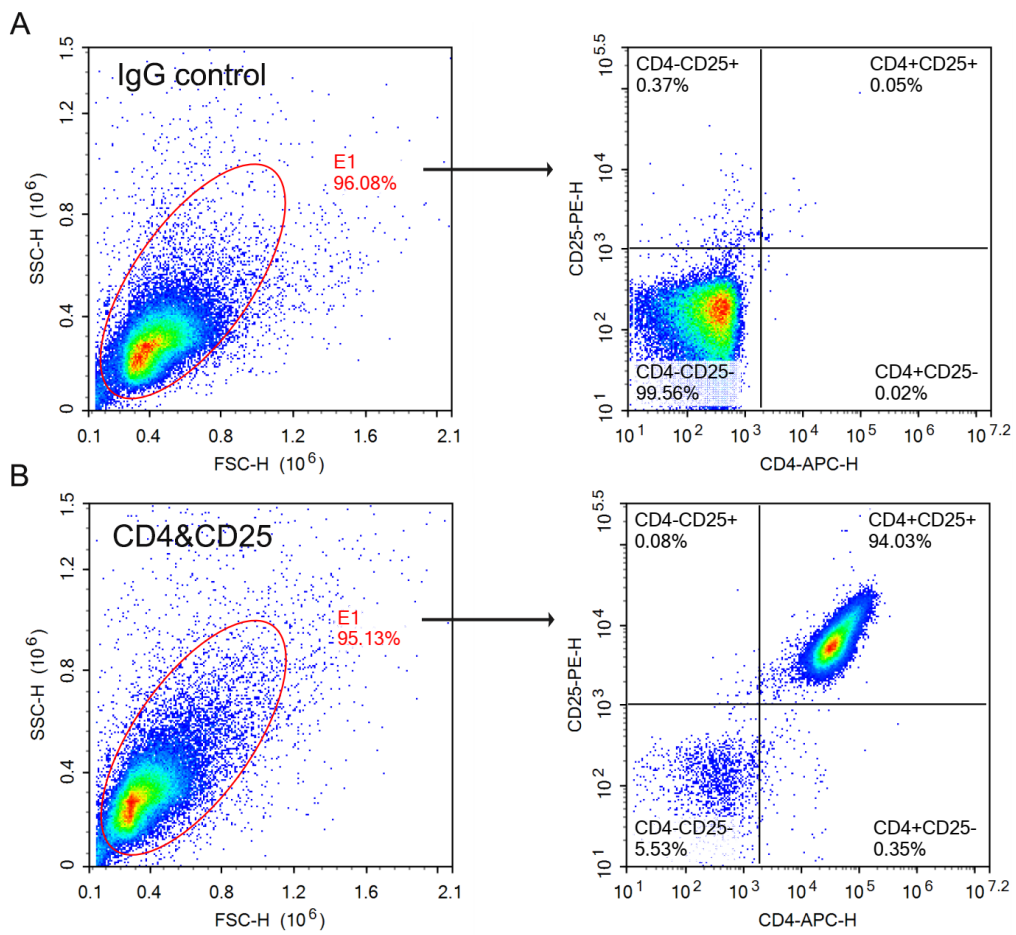


Figure S2 Representative flow cytometry gating strategy in Figure 3. APC anti-human CD4 and PE anti-human CD25 antibodies were used to stain Treg cells. The cursor was set in (B) according to the isotype control (A).

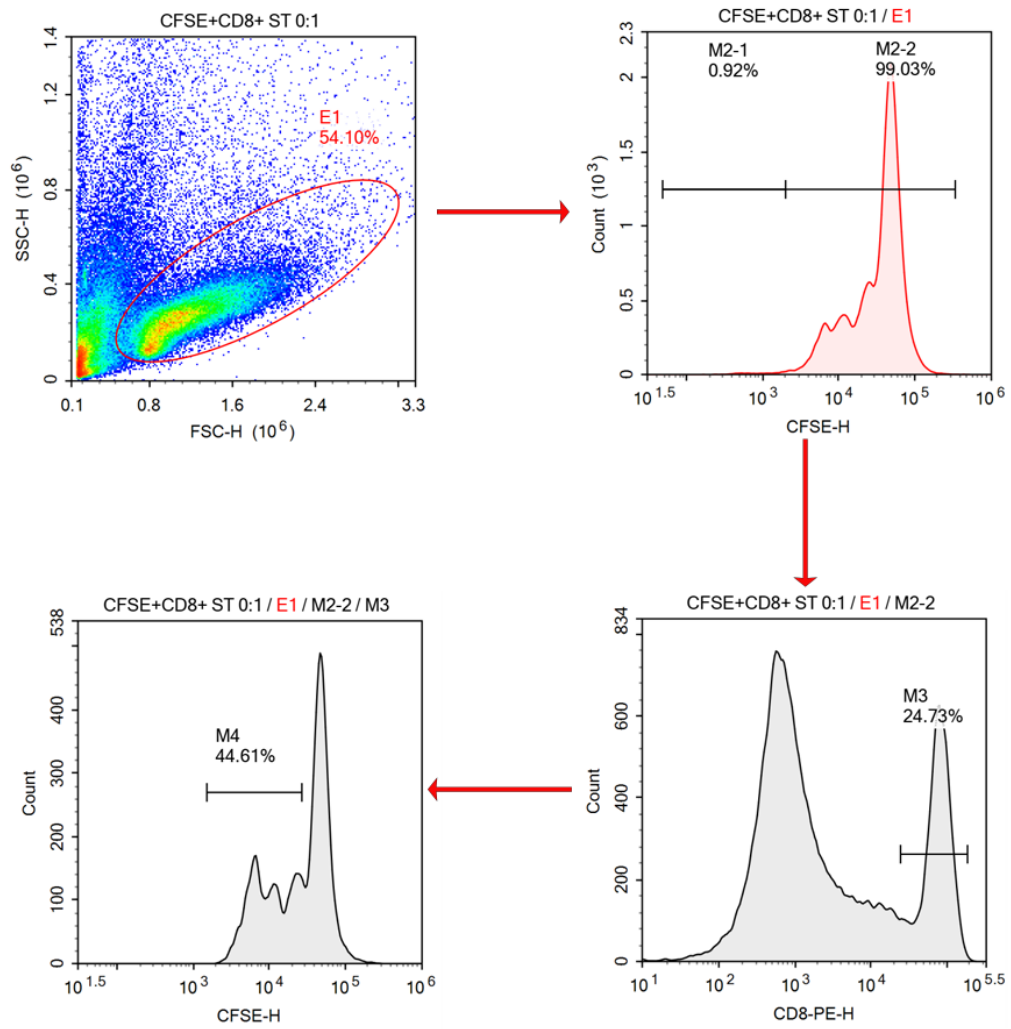


Figure S3 Representative flow cytometry gating strategy in *Figure 5*.