

Figure S1 Enhanced computed tomography of acute pancreatitis with infection. (A-F) Gas configurations in the necrotic pancreatic tissue can be detected (green arrows).

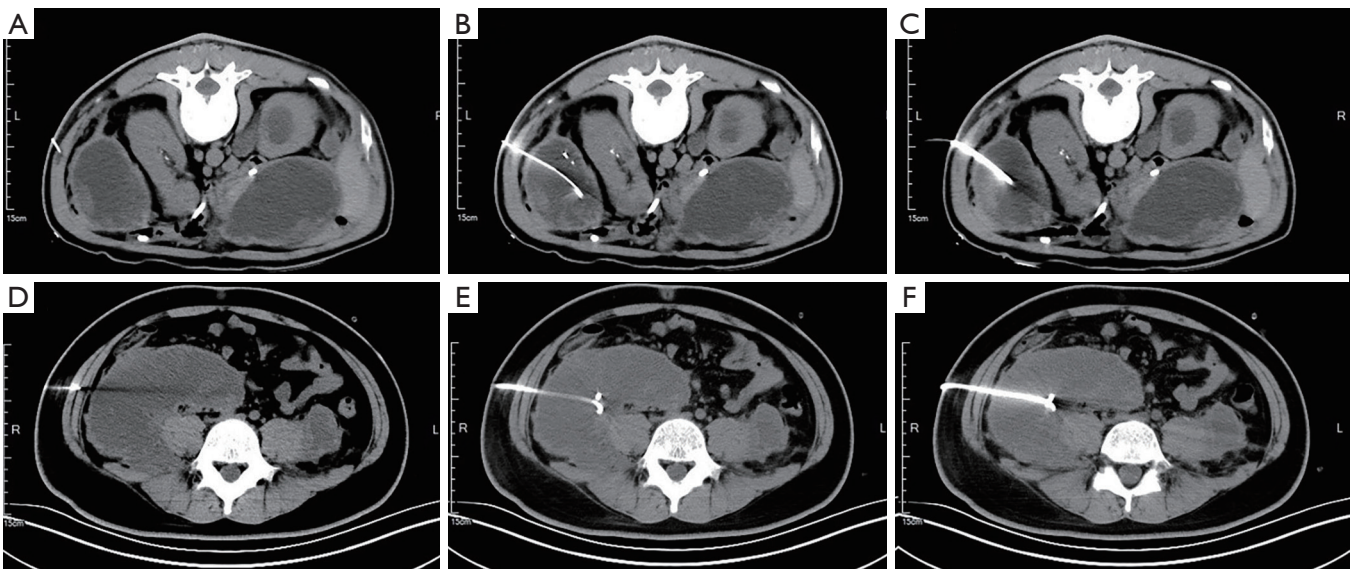


Figure S2 Computed tomography-guided fine-needle aspiration was performed to obtain drainage fluid from peri-pancreatic tissues. (A,B,C) Left para-colonic sulcus drainage (prone position); (D,E,F) right para-colonic sulcus drainage (supine position).

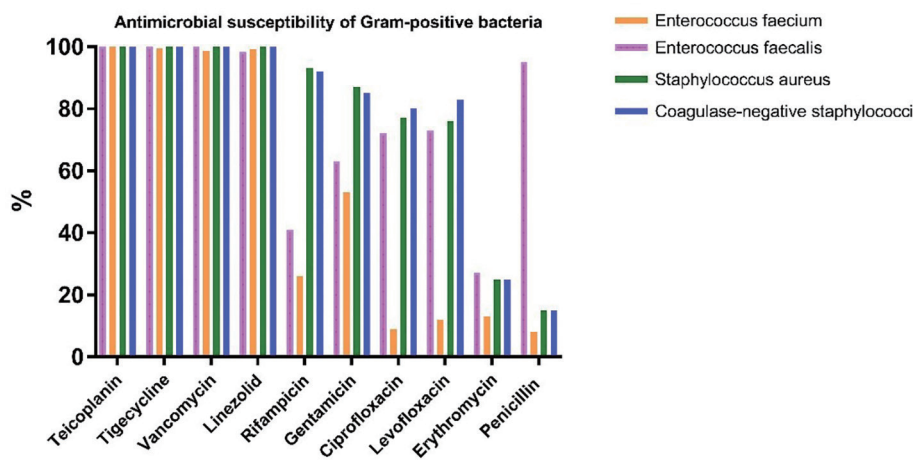


Figure S3 Antimicrobial susceptibility of gram-positive bacteria. Teicoplanin, vancomycin, linezolid, and tigecycline are the best choice for Gram-positive bacteria.

Table S1 Laboratory results of patients with acute pancreatitis (day 1)

Variables	Total (n=711)	Non-IAI group (n=529)	IAI group (n=182)	P value
Cr, median (IQR)	62 (54, 72)	62 (54, 70)	61.5 (51, 77.8)	0.44
Hct, median (IQR)	0.4 (0.3, 0.4)	0.4 (0.3, 0.4)	0.4 (0.3, 0.4)	0.14
WBC, median (IQR)	10.2 (7.4, 13.8)	9.9 (6.8, 13.1)	11.4 (8.8, 15.8)	<0.01
PNEUT, median (IQR)	82.8 (74.5, 87.7)	81.3 (71.6, 86.9)	86.2 (81.8, 89.3)	<0.01
Neutrophils, median (IQR)	8.4 (5.5, 11.8)	7.9 (5.1, 11)	9.7 (7.3, 13.7)	<0.01
TLC, median (IQR)	1.1 (0.8, 1.5)	1.2 (0.9, 1.6)	1 (0.7, 1.3)	<0.01
PLYMPH, median (IQR)	10.8 (7.2, 17.4)	12 (8, 19.6)	8.6 (5.7, 11.7)	<0.01
Lymphocytes, median (IQR)	1.1 (0.8, 1.5)	1.2 (0.9, 1.7)	1 (0.7, 1.3)	<0.01
EOS, median (IQR)	0 (0, 0.1)	0.1 (0, 0.1)	0 (0, 0)	<0.01
PEO, median (IQR)	0.4 (0.1, 1.3)	0.6 (0.1, 1.6)	0.1 (0, 0.4)	<0.01
Hb, median (IQR)	132 (117, 145)	133 (118, 145)	126.5 (112, 146)	0.18
PLT, median (IQR)	181 (139, 224)	180 (141, 221)	185 (138, 234.8)	0.31
Lactates, median (IQR)	1.7 (1.3, 2.2)	1.6 (1.3, 2.1)	1.9 (1.4, 2.6)	<0.01
PT, median (IQR)	13.2 (12.4, 14.2)	13 (12.3, 13.9)	13.9 (13.1, 14.8)	<0.01
APTT, median (IQR)	30.4 (27.8, 33.6)	30.1 (27.7, 33.1)	31.9 (28.2, 36)	<0.01
TT, median (IQR)	17.3 (16.2, 18.8)	17.3 (16.2, 18.8)	17.2 (16.1, 19)	0.99
Fg, median (IQR)	4.8 (3.2, 6.3)	4.5 (3, 6)	5.4 (3.9, 6.6)	<0.01
FDP, median (IQR)	8.5 (4, 17.3)	6.4 (3.1, 13.8)	15.2 (9.2, 25.1)	<0.01
DD, median (IQR)	2.4 (1, 5.2)	1.7 (0.8, 4.1)	4.5 (2.6, 8.2)	<0.01
TG, median (IQR)	2 (1.1, 4.5)	2 (1.1, 4.3)	2.2 (1.1, 5.4)	0.11
TC, median (IQR)	4.5 (3.3, 6)	4.6 (3.4, 6.1)	4.3 (2.9, 6)	0.07
LP, median (IQR)	0.1 (0, 0.2)	0.1 (0, 0.2)	0.1 (0, 0.2)	0.12
ApoA, mean ± SD	0.9±0.3	1±0.3	0.8±0.3	<0.01
ApoB, median (IQR)	0.8 (0.6, 1)	0.8 (0.6, 1.1)	0.7 (0.6, 1)	0.03
ApoE, median (IQR)	4.8 (3.7, 7.2)	4.8 (3.7, 7.2)	4.8 (3.9, 8)	0.36
LDLc, median (IQR)	2.1 (1.5, 3.1)	2.3 (1.6, 3.2)	1.7 (1.1, 2.5)	<0.01
HDLc, median (IQR)	0.9 (0.6, 1.1)	0.9 (0.7, 1.1)	0.7 (0.5, 0.9)	<0.01
FFA, median (IQR)	0.7 (0.6, 0.9)	0.7 (0.6, 0.9)	0.7 (0.6, 0.9)	0.28
Na, median (IQR)	138 (136, 140)	138 (136, 140)	137 (134, 140)	<0.01
K, median (IQR)	3.8 (3.5, 4.1)	3.8 (3.5, 4.1)	3.8 (3.5, 4.2)	0.52
CO2CP, median (IQR)	23.4 (20.4, 26)	23.6 (21.2, 25.9)	22.3 (18.9, 26)	0.02
P, median (IQR)	0.8 (0.6, 1)	0.9 (0.7, 1.1)	0.7 (0.5, 1)	<0.01
Ca, median (IQR)	2.1 (2, 2.2)	2.1 (2, 2.2)	2 (1.8, 2.1)	<0.01
LDH, median (IQR)	278 (200.2, 388.8)	274 (193.8, 382)	289 (228.5, 408.5)	0.04
CK, median (IQR)	74 (45, 106)	75 (46, 105)	69.5 (38.2, 121)	0.41
MYO, median (IQR)	30 (17.5, 36)	29.4 (16.1, 31.6)	30 (21.6, 62.6)	<0.01
TnI, median (IQR)	0 (0, 0.5)	0 (0, 0.5)	0 (0, 0.5)	<0.01
PCT, median (IQR)	0.3 (0.1, 1.1)	0.2 (0, 0.7)	0.8 (0.3, 2.1)	<0.01
CRP, median (IQR)	79 (50.2, 135)	80 (54, 135)	75 (43, 142)	0.24
AG, median (IQR)	1.2 (1, 1.5)	1.2 (1, 1.5)	1.2 (1, 1.4)	0.74
ALT, median (IQR)	26 (15, 46)	24 (15, 44)	31.5 (17.2, 56)	<0.01
Alb, median (IQR)	37 (33, 40)	37 (33, 40)	36 (33, 40)	0.56
AST, median (IQR)	35 (24.8, 53.2)	35 (24, 52)	36 (26, 63)	0.03
TBIL, median (IQR)	17.2 (11.8, 24.9)	16.8 (11.7, 24.6)	18.1 (12.4, 27.6)	0.19
ALP, median (IQR)	73 (55, 104)	71 (53.5, 97.5)	82 (60, 122.5)	<0.01
DBIL, median (IQR)	3.7 (2.1, 6.8)	3.6 (2.1, 6.3)	4.1 (2.2, 9.3)	0.03

AG, albumin-to-globulin ratio; Alb, albumin; ALP, alkaline phosphatase; ALT, alanine transaminase; ApoA, apolipoprotein A; ApoB, apolipoprotein B; ApoE, apolipoprotein E; APTT, activated partial thromboplastin time; AST, aspartate transaminase; Ca, calcium; CK, creatine kinase; CO2CP; carbon dioxide combining power; Cr, creatinine; CRP, C-reactive protein; DBIL, direct bilirubin; DD, D-dimer; EOS, eosinophil; FDP, fibrin degradation products; FFA, free fatty acids; Fg, fibrinogen; Hb, hemoglobin; Hct, hematocrit; IQR, interquartile range; K, potassium; HDLc, high-density lipoprotein cholesterol; LDH, lactate dehydrogenase; LDLc, low-density lipoprotein cholesterol; LP, lipoprotein; MYO, myoglobin; Na, sodium; P, phosphorus; PCT, procalcitonin; PEO, percentage of eosinophils; PLT, platelets; PLYMPH, percentage of lymphocytes; PNEUT, percentage of neutrophils; PT, prothrombin time; SD, standard deviation; TBIL, total bilirubin; TC, total cholesterol; TG, total glyceride; TnI, troponin; TLC, total lymphocyte count; TT, thrombin time; WBC, white blood cells.

Table S2 Laboratory results of patients with acute pancreatitis (day 3)

Variables	Total (n=711)	Non-IAI group (n=529)	IAI group (n=182)	P value
Cr, median (IQR)	62 (52, 71)	62 (53, 71)	59 (48, 71)	0.18
Hct, median (IQR)	0.4 (0.3, 0.4)	0.4 (0.4, 0.4)	0.4 (0.3, 0.4)	<0.01
WBC, median (IQR)	8.8 (5.9, 13)	8.2 (5.4, 12.2)	10.8 (7.7, 14.7)	<0.01
PNEUT, median (IQR)	79.6 (67.5, 85.8)	76 (63.2, 84.9)	84.8 (79.9, 88.1)	<0.01
Neutrophils, median (IQR)	7 (4.2, 10.3)	6.2 (3.8, 9.5)	9 (6.2, 12.6)	<0.01
TLC, median (IQR)	1.2 (0.8, 1.6)	1.3 (1, 1.7)	1 (0.7, 1.3)	<0.01
PLYMPH, median (IQR)	12.8 (8.1, 21.7)	15.3 (8.9, 24.7)	9.4 (6.1, 12.4)	<0.01
Lymphocytes, median (IQR)	1.1 (0.8, 1.6)	1.2 (0.8, 1.7)	0.9 (0.7, 1.3)	<0.01
EOS, median (IQR)	0.1 (0, 0.2)	0.1 (0, 0.2)	0.1 (0, 0.2)	0.41
PEO, median (IQR)	0.5 (0.1, 2)	0.5 (0.1, 1.7)	0.6 (0.1, 2.1)	0.67
Hb, median (IQR)	128 (114, 142)	131 (118, 143)	120 (110, 134.8)	<0.01
PLT, median (IQR)	185 (145, 241.5)	187 (148.2, 238.8)	178.5 (139.5, 252)	0.46
Lactates, median (IQR)	1.6 (1.4, 2.1)	1.6 (1.4, 2)	1.8 (1.4, 2.2)	0.16
PT, median (IQR)	13.4 (12.7, 14.3)	13.3 (12.6, 14.2)	13.7 (13, 14.9)	<0.01
APTT, median (IQR)	30.9 (28.2, 34.5)	30.6 (28, 33.9)	31.9 (28.9, 35.7)	<0.01
TT, median (IQR)	17.5 (16.2, 19)	17.6 (16.4, 19.1)	17.3 (15.8, 18.6)	0.01
Fg, median (IQR)	4.8 (3.6, 6.3)	4.7 (3.5, 6.2)	5.3 (4, 6.7)	<0.01
FDP, median (IQR)	12.2 (6.1, 21.4)	10.1 (4.7, 18.4)	17.4 (11.9, 26.6)	<0.01
DD, median (IQR)	3.8 (1.7, 6.9)	3 (1.3, 5.9)	5.9 (3.5, 8.3)	<0.01
Na, median (IQR)	138 (136, 141)	138 (136, 140)	138 (135.5, 142)	0.65
K, median (IQR)	3.8 (3.6, 4.1)	3.8 (3.6, 4.1)	3.7 (3.5, 4.1)	0.25
CO2CP, median (IQR)	24.1 (21.6, 26.9)	24 (22, 26.2)	24.5 (21, 27.9)	0.36
P, median (IQR)	0.9 (0.6, 1.1)	1 (0.7, 1.1)	0.7 (0.5, 1)	<0.01
Ca, median (IQR)	2.2 (2, 2.3)	2.2 (2.1, 2.3)	2 (1.9, 2.2)	<0.01
LDH, median (IQR)	265 (188, 329.2)	264 (186, 327)	274 (207.5, 361.5)	0.1
CK, median (IQR)	64 (43, 86)	64 (44, 86)	59 (37, 89.5)	0.37
PCT, median (IQR)	0.2 (0, 1.2)	0.2 (0, 0.9)	0.2 (0, 1.4)	0.6
CRP, median (IQR)	74 (52, 100.5)	74 (49, 100.2)	74 (54, 100.5)	0.42
AG, median (IQR)	1.2 (1, 1.4)	1.2 (1, 1.4)	1.1 (0.9, 1.3)	<0.01
AST, median (IQR)	25 (18, 36)	25 (18, 38)	24 (18, 34)	0.46
Alb, median (IQR)	35 (31, 38)	35 (32, 39)	32 (29, 36)	<0.01
ALT, median (IQR)	21 (14, 38)	21 (14, 37)	20 (14, 39)	0.7
TBIL, median (IQR)	19 (13.6, 26.8)	18.3 (13.3, 25.3)	20.3 (15.1, 30.2)	<0.01
ALP, median (IQR)	64 (51.8, 84)	65 (53, 85)	62 (49, 83.5)	0.21
DBIL, median (IQR)	3.8 (2.3, 6.1)	3.6 (2.3, 5.5)	5 (2.7, 8)	<.01
AFP, median (IQR)	1.9 (1.4, 2.8)	2 (1.4, 2.9)	1.6 (1.2, 2.6)	0.01
CEA, median (IQR)	1.9 (1.3, 2.6)	1.9 (1.3, 2.6)	1.8 (1.3, 2.6)	0.78
IL-6, median (IQR)	24.6 (16.6, 34.8)	23.8 (15.3, 32.9)	32.9 (22.4, 46.3)	<0.01
IL-8, median (IQR)	125.5 (84, 190.3)	114.5 (78.2, 176.3)	190.4 (109.6, 245.9)	<0.01
IL-10, median (IQR)	44.5 (2.4, 67.4)	32.6 (2.4, 57.3)	67.8 (46.4, 87.3)	<0.01

AG, albumin-to-globulin ratio; Alb, albumin; ALP, alkaline phosphatase; ALT, alanine transaminase; ApoA, apolipoprotein A; ApoB, apolipoprotein B; ApoE, apolipoprotein E; APTT, activated partial thromboplastin time; AST, aspartate transaminase; Ca, calcium; CK, creatine kinase; CO2CP, carbon dioxide combining power; Cr, creatinine; CRP, C-reactive protein; DBIL, direct bilirubin; DD, D-dimer; EOS, eosinophils; FDP, fibrin degradation products; FFA, free fatty acids; Fg, fibrinogen; Hb, hemoglobin; Hct, hematocrit; IQR, interquartile range; K, potassium; HDLc, high-density lipoprotein cholesterol; LDH, lactate dehydrogenase; LDLc, low-density lipoprotein cholesterol; LP, lipoprotein; MYO, myoglobin; Na, sodium; P, phosphorus; PCT, procalcitonin; PEO, percentage of eosinophils; PLT, platelets; PLYMPH, percentage of lymphocytes; PNEUT, percentage of neutrophils; PT, prothrombin time; TBIL, total bilirubin; TC, total cholesterol; TG, total glyceride; Tnl, troponin; TLC, total lymphocyte count; TT, thrombin time; WBC, white blood cells.

Table S3 Laboratory results of patients with acute pancreatitis (day 7)

Variables	Total (n=711)	Non-IAI group (n=529)	IAI group (n=182)	P value
Cr, median (IQR)	64 (54, 76)	65 (55, 76)	58 (46.5, 72)	<0.01
Hct, median (IQR)	0.4 (0.3, 0.4)	0.4 (0.3, 0.4)	0.4 (0.3, 0.4)	<0.01
WBC, median (IQR)	8.4 (6, 11.9)	7.8 (5.7, 10.7)	10.2 (7.5, 13.2)	<0.01
PNEUT, median (IQR)	78.3 (65.9, 85)	74.6 (62.4, 83.6)	83.9 (78.5, 87.7)	<0.01
Neutrophils, median (IQR)	6.5 (4.1, 9.9)	5.8 (3.6, 8.8)	8.7 (6.1, 12)	<0.01
TLC, median (IQR)	1.2 (0.9, 1.6)	1.3 (0.9, 1.8)	1 (0.7, 1.3)	<0.01
PLYMPH, median (IQR)	13.3 (8.4, 23.6)	15.9 (9.5, 27.3)	9.2 (6.5, 13.6)	<0.01
Lymphocytes, median (IQR)	1.2 (0.8, 1.6)	1.3 (0.8, 1.8)	1 (0.7, 1.3)	<0.01
EOS, median (IQR)	0.2 (0.1, 0.2)	0.2 (0.1, 0.2)	0.2 (0.1, 0.2)	0.2
PEO, median (IQR)	1.5 (0.9, 2.5)	1.5 (0.9, 2.4)	1.5 (0.9, 2.9)	0.27
Hb, median (IQR)	125 (112, 138)	128 (114.2, 141)	117 (107, 130)	<0.01
PLT, median (IQR)	193 (148.5, 255)	197 (151.8, 255.2)	181 (138.5, 253)	0.3
Lactates, median (IQR)	1.8 (1.5, 2.4)	1.8 (1.5, 2.3)	1.9 (1.6, 2.5)	0.14
PT, median (IQR)	13.3 (12.6, 14.2)	13.2 (12.6, 13.9)	13.6 (12.8, 14.6)	<0.01
APTT, median (IQR)	30.5 (28.1, 33.8)	30.4 (28.1, 33.3)	31 (28.3, 34)	0.48
TT, median (IQR)	17.5 (16.2, 18.8)	17.6 (16.3, 18.9)	17.3 (15.8, 18.8)	0.05
Fg, median (IQR)	4.8 (3.6, 6.2)	4.7 (3.5, 6.2)	5 (4.2, 6.4)	<0.01
FDP, median (IQR)	13.7 (6.7, 21.7)	11.4 (5.1, 18.4)	19.2 (13.4, 28.7)	<0.01
DD, median (IQR)	4.3 (1.9, 7)	3.5 (1.4, 6.4)	6.3 (4, 8.7)	<0.01
Na, median (IQR)	139 (136, 141)	139 (136, 141)	139 (136, 142)	0.6
K, median (IQR)	3.8 (3.5, 4.1)	3.8 (3.5, 4.1)	3.8 (3.5, 4.1)	0.45
CO2CP, median (IQR)	28 (25.6, 30.1)	27.7 (25.4, 29.7)	28.4 (26, 31.3)	<0.01
P, median (IQR)	0.9 (0.7, 1.1)	1 (0.7, 1.2)	0.8 (0.6, 1)	<0.01
Ca, median (IQR)	2.2 (2, 2.3)	2.2 (2.1, 2.3)	2.1 (1.9, 2.2)	<0.01
LDH, median (IQR)	260 (190, 300)	258 (186, 297)	264 (196, 324)	0.27
CK, median (IQR)	82 (38, 136)	84 (42.8, 135.8)	77 (31, 145)	0.43
PCT, median (IQR)	0.2 (0, 1.2)	0.2 (0, 1.2)	0.2 (0, 1.2)	0.63
CRP, median (IQR)	74 (53, 97)	75 (54, 97)	70 (49, 97)	0.8
AG, median (IQR)	1.2 (1.1, 1.5)	1.2 (1.1, 1.5)	1.3 (1.1, 1.4)	0.88
ALT, median (IQR)	34 (23, 53)	34 (23, 53)	33 (22, 52)	0.38
Alb, median (IQR)	38 (34, 42)	37 (34, 42)	38 (34, 41)	0.53
AST, median (IQR)	23 (18, 35)	23 (18, 37)	23 (17.8, 33)	0.5
TBIL, median (IQR)	14.1 (10.5, 19.3)	14.3 (10.6, 19.9)	13.4 (10.3, 18.9)	0.19
ALP, median (IQR)	69 (56, 89.2)	69 (56, 88)	70 (56, 93)	0.79
DBIL, median (IQR)	2.7 (1.6, 5.1)	2.7 (1.6, 5.1)	2.6 (1.5, 4.9)	0.53

AG, albumin-to-globulin ratio; Alb, albumin; ALP, alkaline phosphatase; ALT, alanine transaminase; ApoA, apolipoprotein A; ApoB, apolipoprotein B; ApoE, apolipoprotein E; APTT, activated partial thromboplastin time; AST, aspartate transaminase; Ca, calcium; CK, creatine kinase; CO2CP; carbon dioxide combining power; Cr, creatinine; CRP, C-reactive protein; DBIL, direct bilirubin; DD, D-dimer; EOS, eosinophils; FDP, fibrin degradation products; FFA, free fatty acids; Fg, fibrinogen; Hb, hemoglobin; Hct, hematocrit; K, potassium; HDLc, high-density lipoprotein cholesterol; IQR, interquartile range; LDH, lactate dehydrogenase; LDLc, low-density lipoprotein cholesterol; LP, lipoprotein; MYO, myoglobin; Na, sodium; P, phosphorus; PCT, procalcitonin; PEO, percentage of eosinophils; PLT, platelets; PLYMPH, percentage of lymphocytes; PNEUT, percentage of neutrophils; PT, prothrombin time; TBIL, total bilirubin; TC, total cholesterol; TG, total glyceride; Tnl, troponin; TLC, total lymphocyte count; TT, thrombin time; WBC, white blood cells.

Table S4 Laboratory results of patients with acute pancreatitis (day 14)

Variables	Total (n=711)	Non-IAI group (n=529)	IAI group (n=182)	P value
Cr, median (IQR)	65 (53, 77)	67 (56, 78)	60 (48.2, 73)	<0.01
Hct, median (IQR)	0.4 (0.3, 0.4)	0.4 (0.3, 0.4)	0.3 (0.3, 0.4)	<0.01
WBC, median (IQR)	8.5 (5.8, 11.9)	8.6 (6, 11.7)	8.3 (5.6, 12)	0.41
PNEUT, median (IQR)	78.2 (66.8, 84.5)	73.8 (60.8, 83.3)	81.6 (75.9, 86.5)	<0.01
Neutrophils, median (IQR)	6.9 (4.1, 10)	5.6 (3.6, 9.2)	8.1 (5.7, 10.9)	<0.01
TLC, median (IQR)	1.2 (0.9, 1.7)	1.3 (1, 1.7)	1.1 (0.8, 1.4)	<0.01
PLYMPH, median (IQR)	13.3 (9, 22.9)	15.6 (9.7, 27.1)	10.6 (8, 15.4)	<0.01
Lymphocytes, median (IQR)	1.1 (0.7, 2.1)	1.3 (0.8, 2.6)	0.9 (0.6, 1.5)	<0.01
EOS, median (IQR)	0.2 (0.1, 0.3)	0.2 (0.1, 0.3)	0.2 (0.1, 0.3)	0.19
PEO, median (IQR)	1.9 (1.1, 2.7)	1.9 (1.2, 2.6)	1.8 (0.9, 3.1)	0.74
Hb, mean \pm SD	122.7 \pm 20.4	125.4 \pm 20.3	117.6 \pm 19.7	<0.01
PLT, median (IQR)	201 (156, 264.5)	204 (155.8, 259.8)	198 (156, 266.5)	0.76
Lactates, median (IQR)	1.9 (1.5, 2.4)	1.8 (1.5, 2.4)	1.9 (1.4, 2.4)	0.44
PT, median (IQR)	13.3 (12.5, 14.1)	13.2 (12.5, 14)	13.4 (12.7, 14.4)	0.02
APTT, median (IQR)	29.8 (27.4, 33.1)	29.8 (27.6, 32.7)	29.8 (27.4, 33.7)	0.58
TT, median (IQR)	17.6 (16.4, 18.8)	17.7 (16.4, 18.8)	17.5 (16.3, 19.1)	0.71
Fg, median (IQR)	4.6 (3.5, 5.9)	4.6 (3.3, 5.9)	4.7 (3.8, 5.9)	0.21
FDP, median (IQR)	14.7 (6.4, 22.4)	10.6 (4.7, 18.4)	18.6 (12.4, 28)	<0.01
DD, median (IQR)	4.5 (2.1, 7.3)	3.5 (1.4, 5.9)	6.2 (3.6, 8.7)	<0.01
Na, median (IQR)	139 (137, 142)	139 (137, 141.2)	139 (137, 142)	0.5
K, median (IQR)	3.8 (3.6, 4.2)	3.8 (3.6, 4.1)	3.8 (3.5, 4.2)	0.36
CO2CP, mean \pm SD	28.9 \pm 4.4	28 \pm 4.5	29.7 \pm 4.2	<0.01
P, median (IQR)	1 (0.7, 1.2)	1.1 (0.7, 1.2)	0.8 (0.6, 1.1)	<0.01
Ca, median (IQR)	2.2 (2.1, 2.4)	2.3 (2.1, 2.4)	2.1 (2, 2.3)	<0.01
LDH, median (IQR)	216 (164, 270.5)	215 (158, 266)	217 (165.2, 274.8)	0.4
CK, median (IQR)	57 (38, 95.2)	56 (38, 96)	58 (38, 93.5)	0.88
PCT, median (IQR)	0.2 (0, 0.7)	0.2 (0, 0.6)	0.3 (0.1, 1)	<0.01
CRP, median (IQR)	32 (22, 46)	31 (21, 45)	35 (25, 48)	0.03
AG, median (IQR)	1.2 (1.1, 1.5)	1.3 (1.1, 1.5)	1.2 (1, 1.4)	0.08
ALT, median (IQR)	21 (14, 39)	23 (15, 40)	17 (13, 32)	<0.01
ALB, median (IQR)	38 (34, 41)	38 (34, 42)	37.5 (34, 41)	0.11
AST, median (IQR)	24 (18, 34)	24 (18, 34)	24 (17, 34.5)	0.91
TBIL, median (IQR)	14.6 (10.5, 22.1)	14.3 (10.5, 22.1)	15.1 (10.4, 21.2)	0.88
ALP, median (IQR)	68 (53, 86.2)	68.5 (53, 87)	65.5 (52, 85.2)	0.5
DBIL, median (IQR)	3.1 (1.8, 5.3)	3 (1.8, 5.1)	3.2 (1.7, 5.6)	0.68

AG, albumin-to-globulin ratio; Alb, albumin; ALP, alkaline phosphatase; ALT, alanine transaminase; ApoA, apolipoprotein A; ApoB, apolipoprotein B; ApoE, apolipoprotein E; APTT, activated partial thromboplastin time; AST, aspartate transaminase; Ca, calcium; CK, creatine kinase; CO2CP, carbon dioxide combining power; Cr, creatinine; CRP, C-reactive protein; DBIL, direct bilirubin; DD, D-dimer; EOS, eosinophils; FDP, fibrin degradation products; FFA, free fatty acids; Fg, fibrinogen; Hb, hemoglobin; Hct, hematocrit; K, potassium; HDLc, high-density lipoprotein cholesterol; LDH, lactate dehydrogenase; IQR, interquartile range; LDLc, low-density lipoprotein cholesterol; LP, lipoprotein; MYO, myoglobin; Na, sodium; P, phosphorus; PCT, procalcitonin; PEO, percentage of eosinophils; PLT, platelets; PLYMPH, percentage of lymphocyte; PNEUT, percentage of neutrophils; PT, prothrombin time; SD, standard deviation; TBIL, total bilirubin; TC, total cholesterol; TG, total glyceride; TnI, troponin; TLC, total lymphocyte count; TT, thrombin time; WBC, white blood cells

Table S5 Laboratory results of patients in training and validation groups

Variables	Total (n=711)	Validation group (n=294)	Train group (n=417)	P value
Cr, median (IQR)	62 (54, 72)	63 (55, 75)	60 (53, 70)	0.04
Hct, median (IQR)	0.4 (0.3, 0.4)	0.4 (0.3, 0.4)	0.4 (0.3, 0.4)	0.28
WBC, median (IQR)	10.2 (7.4, 13.8)	10.3 (7.3, 14.2)	10.2 (7.5, 13.6)	0.54
PNEUT, median (IQR)	82.8 (74.5, 87.7)	82.3 (74.5, 87.5)	83.3 (74.8, 87.7)	0.58
Neutrophils, median (IQR)	8.4 (5.5, 11.8)	8.7 (5.4, 12.1)	8.3 (5.6, 11.6)	0.61
TLC, median (IQR)	1.1 (0.8, 1.5)	1.1 (0.9, 1.5)	1.1 (0.8, 1.6)	0.69
PLYMPH, median (IQR)	10.8 (7.2, 17.4)	11.1 (7, 17.3)	10.5 (7.4, 17.6)	0.88
Lymphocytes, median (IQR)	1.1 (0.8, 1.5)	1.1 (0.9, 1.5)	1.1 (0.8, 1.6)	0.67
EOS, median (IQR)	0 (0, 0.1)	0 (0, 0.1)	0 (0, 0.1)	0.52
PEO, median (IQR)	0.4 (0.1, 1.3)	0.4 (0.1, 1.5)	0.3 (0.1, 1.2)	0.65
Hb, median (IQR)	132 (117, 145)	134.5 (118, 147)	130 (116, 144)	0.02
PLT, median (IQR)	181 (139, 224)	181 (140.2, 220.8)	181 (139, 227)	0.98
Lactates, median (IQR)	1.7 (1.3, 2.2)	1.7 (1.3, 2.2)	1.6 (1.3, 2.1)	0.17
PT, median (IQR)	13.2 (12.4, 14.2)	13.3 (12.4, 14.2)	13.2 (12.5, 14.2)	0.52
APTT, median (IQR)	30.4 (27.8, 33.6)	30.4 (27.8, 34.1)	30.4 (27.9, 33.5)	0.75
TT, median (IQR)	17.3 (16.2, 18.8)	17.5 (16.3, 19)	17.1 (16.1, 18.8)	0.12
Fg, median (IQR)	4.8 (3.2, 6.3)	4.8 (3.1, 6.3)	4.8 (3.4, 6.3)	0.4
FDP, median (IQR)	8.5 (4, 17.3)	7.2 (3.9, 17.3)	9.6 (4.3, 17.2)	0.17
DD, median (IQR)	2.4 (1, 5.2)	2.1 (1, 5)	2.9 (1.1, 5.3)	0.14
TG, median (IQR)	2 (1.1, 4.5)	1.9 (0.9, 4.2)	2 (1.1, 4.9)	0.08
TC, median (IQR)	4.5 (3.3, 6)	4.5 (3.3, 6)	4.6 (3.3, 6.1)	0.87
LP, median (IQR)	0.1 (0, 0.2)	0.1 (0.1, 0.2)	0.1 (0, 0.2)	0.55
ApoA, mean±SD	0.9 ± 0.3	0.9 ± 0.3	0.9 ± 0.3	0.91
ApoB, median (IQR)	0.8 (0.6, 1)	0.8 (0.6, 1)	0.8 (0.6, 1)	0.74
ApoE, median (IQR)	4.8 (3.7, 7.2)	4.6 (3.5, 6.6)	5 (3.9, 7.7)	<0.01
LDLc, median (IQR)	2.1 (1.5, 3.1)	2.2 (1.5, 3.1)	2.1 (1.5, 3)	0.64
HDLc, median (IQR)	0.9 (0.6, 1.1)	0.9 (0.7, 1.1)	0.8 (0.6, 1.1)	0.26
FFA, median (IQR)	0.7 (0.6, 0.9)	0.7 (0.5, 0.9)	0.7 (0.6, 0.9)	0.12
Na, median (IQR)	138 (136, 140)	138 (136, 140)	138 (135, 141)	0.62
K, median (IQR)	3.8 (3.5, 4.1)	3.8 (3.5, 4.1)	3.8 (3.5, 4.1)	0.27
CO2CP, median (IQR)	23.4 (20.4, 26)	23.6 (20.9, 25.9)	23.3 (20, 26)	0.64
P, median (IQR)	0.8 (0.6, 1)	0.8 (0.6, 1)	0.8 (0.6, 1)	0.79
Ca, median (IQR)	2.1 (2, 2.2)	2.1 (2, 2.2)	2.1 (2, 2.2)	0.24
LDH, median (IQR)	278 (200.2, 388.8)	282 (189, 396)	275 (212, 386)	0.68
CK, median (IQR)	74 (45, 106)	70 (43, 104.8)	75 (47, 112)	0.2
MYO, median (IQR)	30 (17.5, 36)	30 (18.1, 39.7)	30 (16.5, 34.4)	0.25
TnI, median (IQR)	0 (0, 0.5)	0 (0, 0.5)	0 (0, 0.5)	0.34
PCT, median (IQR)	0.3 (0.1, 1.1)	0.3 (0.1, 1.1)	0.3 (0.1, 1)	0.58
CRP, median (IQR)	79 (50.2, 135)	79 (50, 135)	79 (53, 135)	0.84
AG, median (IQR)	1.2 (1, 1.5)	1.2 (1, 1.5)	1.2 (1, 1.4)	0.34
ALT, median (IQR)	26 (15, 46)	24 (15, 46)	27 (15, 46.5)	0.93
Alb, median (IQR)	37 (33, 40)	37 (33, 40)	36 (33, 39)	0.55
AST, median (IQR)	35 (24.8, 53.2)	36 (26, 54)	34 (23.5, 53)	0.13
TBIL, median (IQR)	17.2 (11.8, 24.9)	17.6 (11.9, 25.6)	16.8 (11.6, 24.4)	0.3
ALP, median (IQR)	73 (55, 104)	75 (57, 108)	72 (54, 99.5)	0.15
DBIL, median (IQR)	3.7 (2.1, 6.8)	3.8 (2, 7.1)	3.7 (2.2, 6.8)	0.9

© Annals of Translational Medicine. All rights reserved. <http://dx.doi.org/10.21037/atm-21-399>

AG, albumin-to-globulin ratio; Alb, albumin; ALP, alkaline phosphatase; ALT, alanine transaminase; ApoA, apolipoprotein A; ApoB, apolipoprotein B; ApoE, apolipoprotein E; APTT, activated partial thromboplastin time; AST, aspartate transaminase; Ca, calcium; CK, creatine kinase; CO2CP, carbon dioxide combining power; Cr, creatinine; CRP, C-reactive protein; DBIL, direct bilirubin; DD, D-dimer; EOS, eosinophils; FDP, fibrin degradation products; FFA, free fatty acids; Fg, fibrinogen; Hb, hemoglobin; Hct, hematocrit; K, potassium; HDLc, high-density lipoprotein cholesterol; IQR, interquartile range; LDH, lactate dehydrogenase; LDLc, low-density lipoprotein cholesterol; LP, lipoprotein; MYO, myoglobin; Na, sodium; P, phosphorus; PCT, procalcitonin; PEO, percentage of eosinophils; PLT, platelets; PLYMPH, percentage of lymphocytes; PNEUT, percentage of neutrophils; PT, prothrombin time; TBIL, total bilirubin; TC, total cholesterol; TG, total glyceride; TnI, troponin; TLC, total lymphocyte count; TT, thrombin time; WBC, white blood cells.