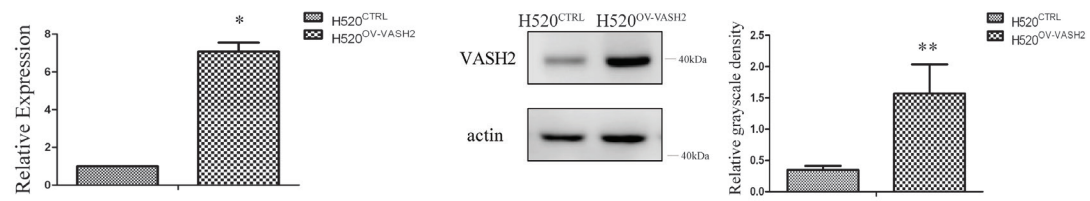
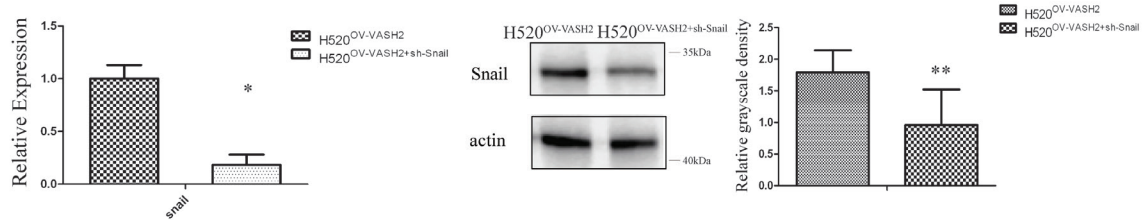


Figure S1 Twelve highly differentially expressed genes significantly correlated with poor prognosis. We collected and analyzed public datasets downloaded from the Gene Expression Omnibus (GEO) database and analyzed the correlation between 12 genes and prognosis in patients with LUSC. LUSC, lung squamous cell carcinoma; GEO, Gene Expression Omnibus.

A



B



C

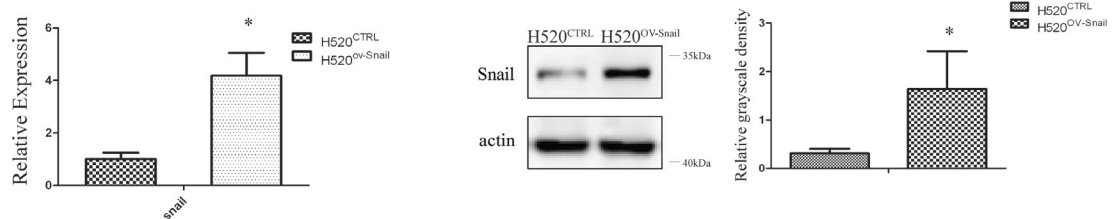


Figure S2 Establishment of H520^{OV-VASH2}, H520^{OV-VASH2+sh-Snail}, and H520^{OV-Snail}. (A) The establishment of H520^{OV-VASH2} was verified by qPCR and Western blot analysis. (B) A recombinant lentivirus was designed to knock down Snail in H520^{OV-VASH2} cells (H520^{OV-VASH2+sh-Snail}). (C) Snail expression in H520^{CTRL} and H520^{OV-Snail}. *, P<0.05 and **, P<0.01 between the groups, respectively. VASH2, vasohibin 2.

Table S1 Primer sequencing for RT-qPCR analysis

No.	Gene name	Forward primer	Reverse primer
1	<i>β-catenin</i>	5'-TGGTGACAGGGAAGACATCA-3'	5'-CCATAGTGAAGGCGAACTGC-3'
2	<i>Twist1</i>	5'-ACTTCCTCTACCAGGTCCTCCAG-3'	5'-CCTCCATCCTCCAGACCGAGAA-3'
3	<i>E-cadherin</i>	5'-TGAAGGTGACAGAGCCTCTGGAT-3'	5'-TGGGTGAATTCGGGCTTGTT-3'
4	<i>N-cadherin</i>	5'-ACAGTGCCACCTACAAAGG-3'	5'-CCGAGATGGGTTGATAATGC-3'
5	<i>Snail</i>	5'-AGCCTGGGTGCCCTCAAGAT-3'	5'-AGGTTGGAGCGGTCAGCGAA-3'
6	<i>Slug</i>	5'-TGCCTGTCATACCACAACCAGA-3'	5'-GGAGGAGGTGTCAGATGGAGGA-3'
7	<i>Zeb1</i>	5'-ACCTGCCAACAGACCAGACAGT-3'	5'-ACATCCTGCTTCATCTGCCTGAG-3'
8	<i>Zeb2</i>	5'-CAAGGAGCAGGTAATCGCAAGT-3'	5'-GCAGTTTGGGCACTCGTAAGGTT-3'
9	<i>VEGF-A</i>	5'-GGCCAGCACATAGGAGAGAT-3'	5'-ACACGTCTGCGGATCTTGTA-3'
10	<i>VEGF-C</i>	5'-CGGGAGGTGTGTATAGATGTG-3'	5'-ATTGGCTGGGGAAGAGTTTG-3'
11	<i>VEGF-D</i>	5'-CCCATCGGTCCACTAGGTTT-3'	5'-CATCGGAACACGTTACACA-3'
12	<i>β-actin</i>	5'-TGGTGACAGGGAAGACATCA-3'	5'-CCATAGTGAAGGCGAACTGC-3'

RT-qPCR, real-time quantitative PCR; VEGF, vascular endothelial growth factor.