

Figure S1 Splenomegaly was accompanied by enlargement of peripheral lymph nodes in $p40^{-/-}IL-2R\alpha^{-/-}$ mice. (A) Representative pictures of enlarged peripheral lymph nodes in $p40^{-/-}IL-2R\alpha^{-/-}$ mice with splenomegaly. (B) Gating strategy to analyze the spleen and liver immune cells using flow cytometry.

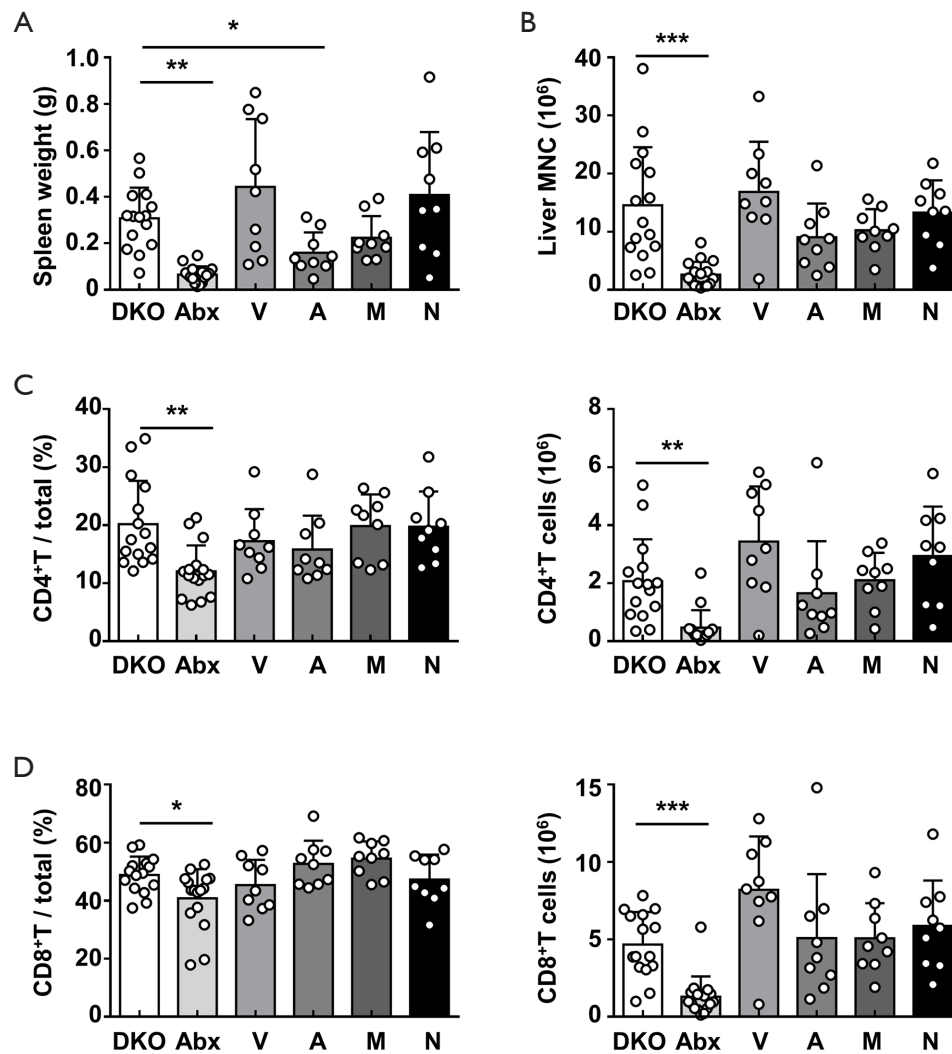


Figure S2 Changes in p40^{-/-}IL-2Rα^{-/-} mice according to the use of single [V, vancomycin (n=9); A, ampicillin (n=9); M, metronidazole (n=9); N, neomycin (n=9)] or multiple ABX (n=16) in terms of (A) spleen weight, (B) liver MNCs, and (C, D) the percentage and absolute number of liver CD4⁺ T and CD8⁺ T cells. *P<0.05, **P<0.01, ***P<0.001. ABX, antibiotics; MNCs, mononuclear cells.