

Effect of CoCl₂ on the proliferation of HPASMCs

HPASMCs was seeded on 96 well plates at a density of 4,000 cells/well. After cell adherence for 12 h, added different concentrations of CoCl₂, and the cell viability was measured by CCK-8 after 48 h (Figure S1).

Effect of IL-6 on the inhibition of PSMCs proliferation by FST

HPASMCs was seeded on 96 well plates at a density of 4,000 cells/well. After cell adherence for 12 h, 5 µg/mL FST was added to incubate for 40 min, then CoCl₂ and IL-6 were added, and the cell viability was measured by CCK-8 after 48 h (Figure S2).

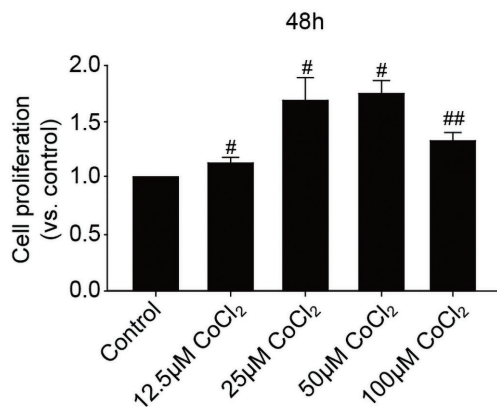


Figure S1 Effect of CoCl₂ on the proliferation of PSMCs. Compared with the control group, #, P<0.05, ##, P<0.01. PSMCs, pulmonary artery smooth muscle cells.

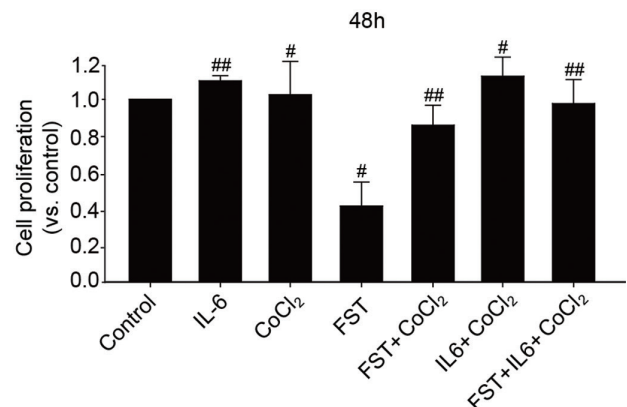


Figure S2 Effect of IL-6 on the inhibition of HPASMCs proliferation by FST. Compared with the control group, #, P<0.05, ##, P<0.01. IL, interleukin; FST, total flavones from *Sceptridium ternatum*; HPASMC, human pulmonary artery smooth muscle cell.