

Figure S1 Forest plot of the summarized clinical outcomes of chemotherapy (CT)/bevacizumab in the treatment of extensive-disease small cell lung cancer (ED-SCLC) including the untreated and the relapsed patients. (A) The summarized overall survival (OS) of CT/bevacizumab group; (B) the summarized progression-free survival (PFS) of CT/bevacizumab group.

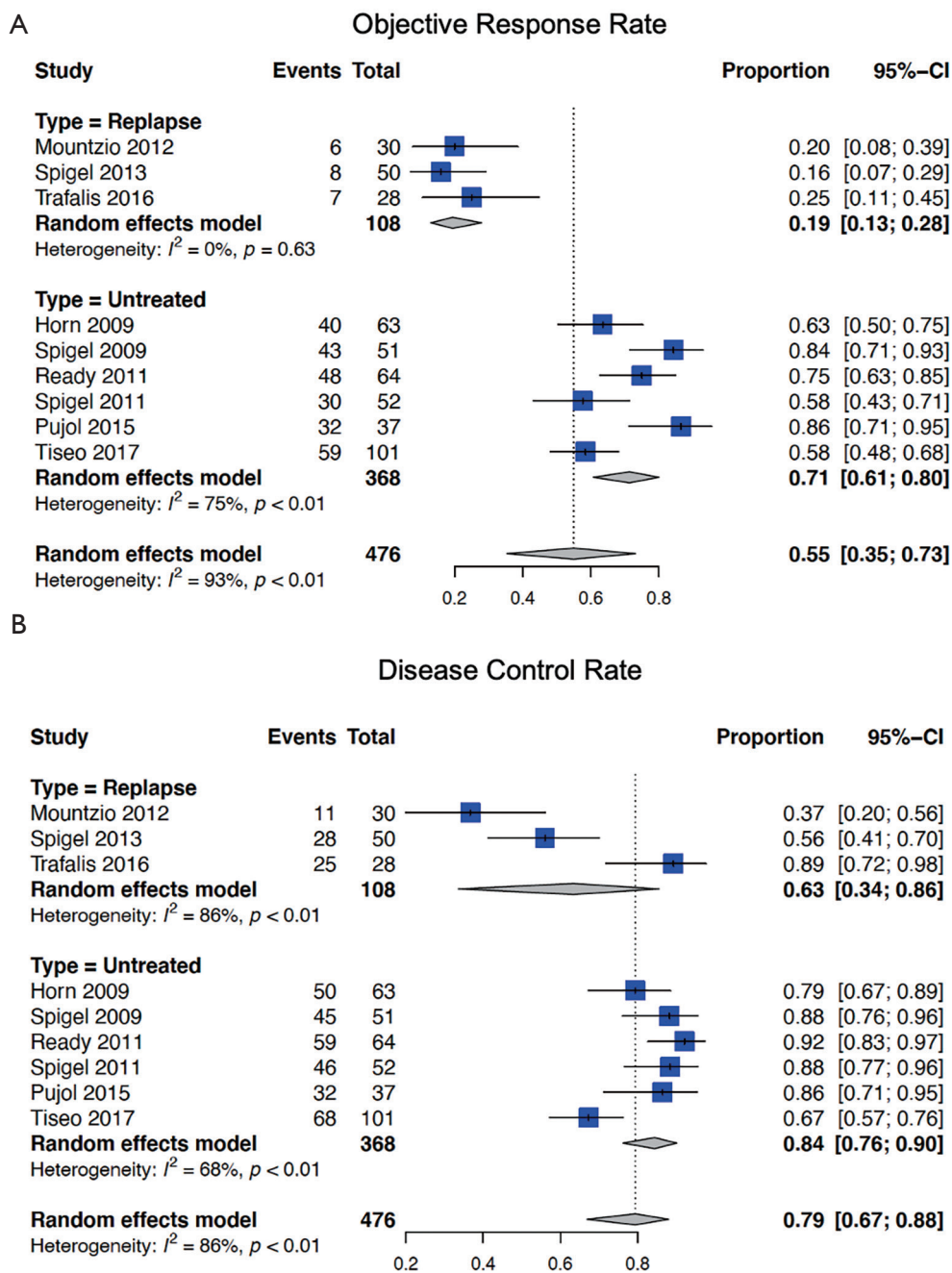


Figure S2 Forest plot of the summarized clinical outcomes of chemotherapy (CT)/bevacizumab in the treatment of extensive-disease small cell lung cancer (ED-SCLC) including the untreated and the relapsed patients. (A) The summarized objective response rate (ORR) of CT/bevacizumab group; (B) the summarized disease control rate (DCR) of CT/bevacizumab group.