

Figure S1 A funnel plot showing the outcomes of Begg’s test of publication bias corresponding to the meta-analysis of clinical remission rate. logRR, log risk ratio; se(logRR), standard error of logRR.

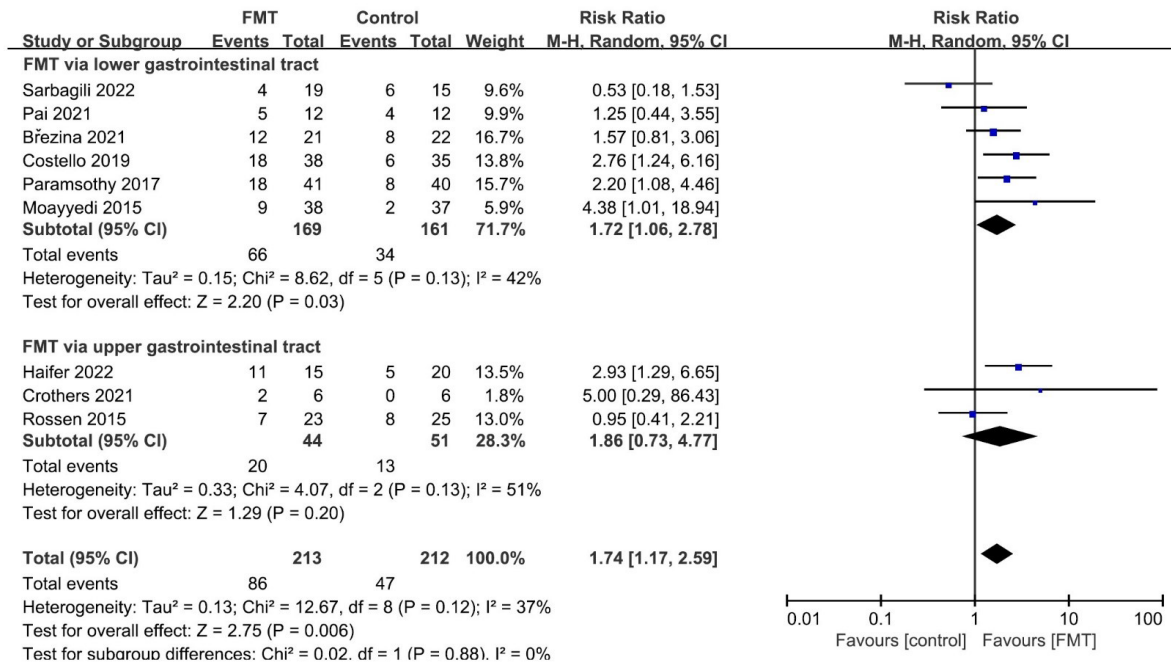


Figure S2 Forest graph showing the risk ratios of clinical remission rates between FMT-treated and control groups with subgroup analyses based on the delivery route of transplant. FMT, fecal microbial transplant.

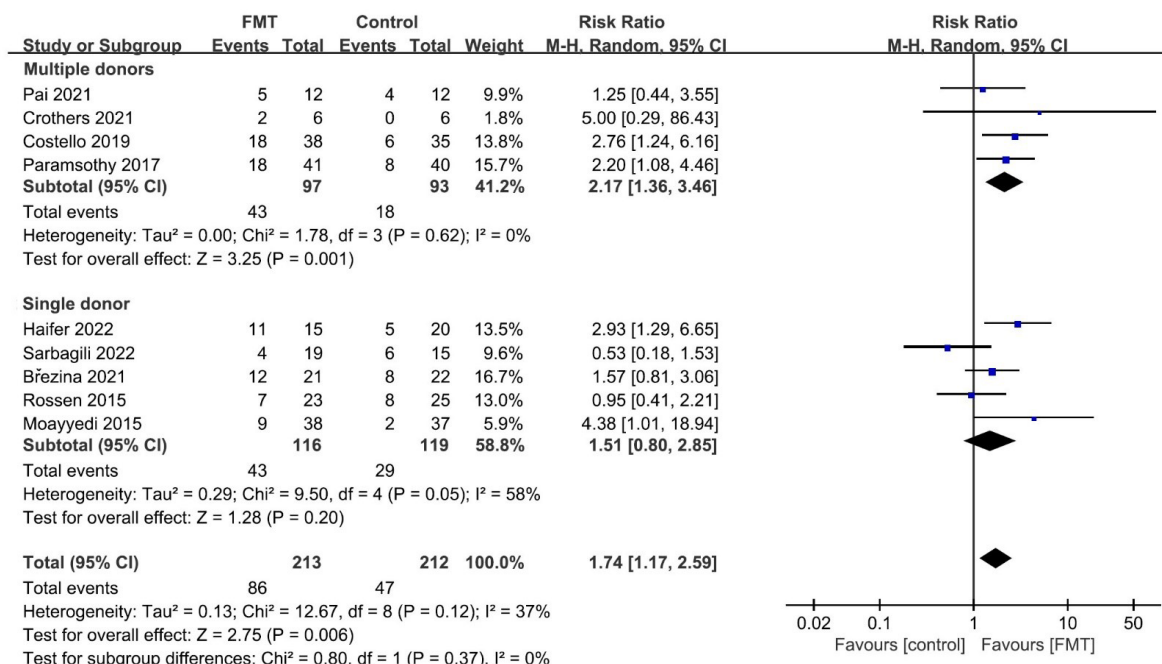


Figure S3 Forest graph showing the risk ratios of clinical remission rates between FMT-treated and control groups with subgroup analyses based on the number of donors. FMT, fecal microbial transplant.

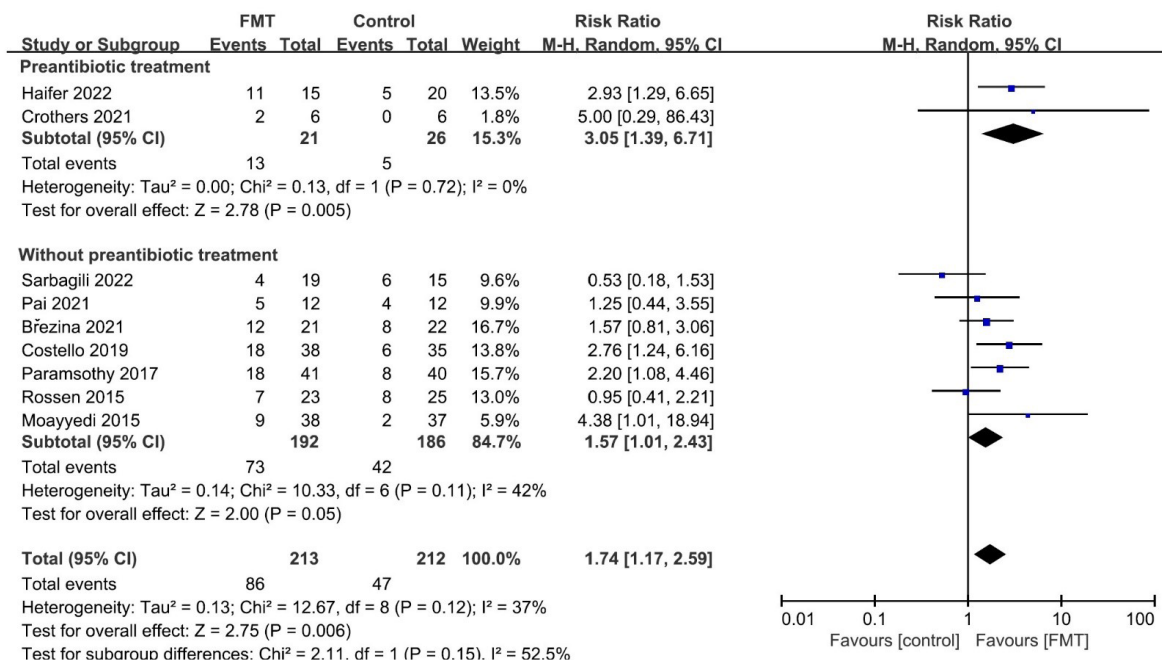


Figure S4 Forest graph showing the risk ratios of clinical remission rates between FMT-treated and control groups with subgroup analyses based on the antibiotic pretreatment. FMT, fecal microbial transplant.

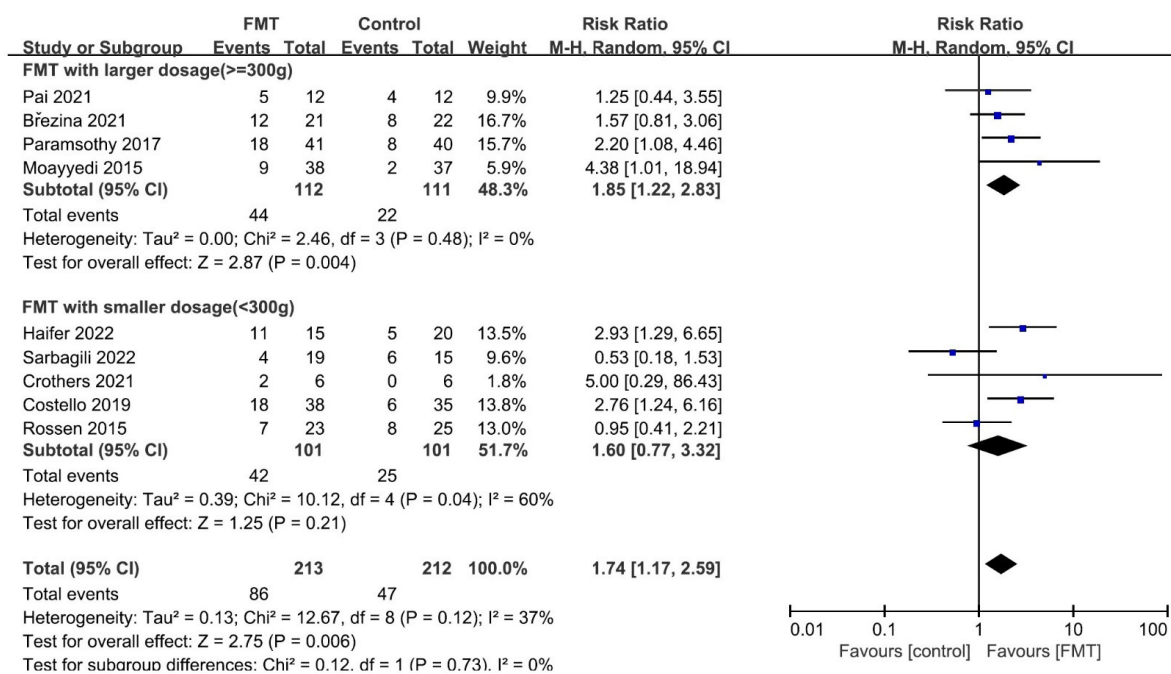


Figure S5 Forest graph showing the risk ratios of clinical remission rates between FMT-treated and control groups with subgroup analyses based on total dosage. FMT, fecal microbial transplant.

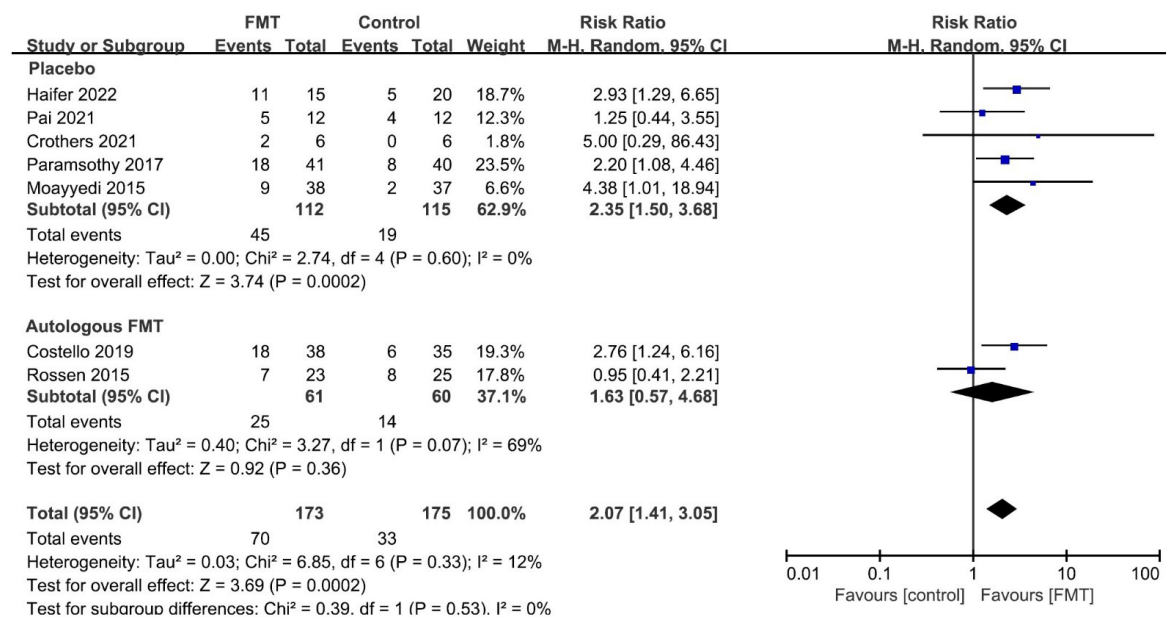


Figure S6 Forest graph showing the risk ratios of clinical remission rates between FMT-treated and control patients with subgroup analyses based on control treatments. FMT, fecal microbial transplant.

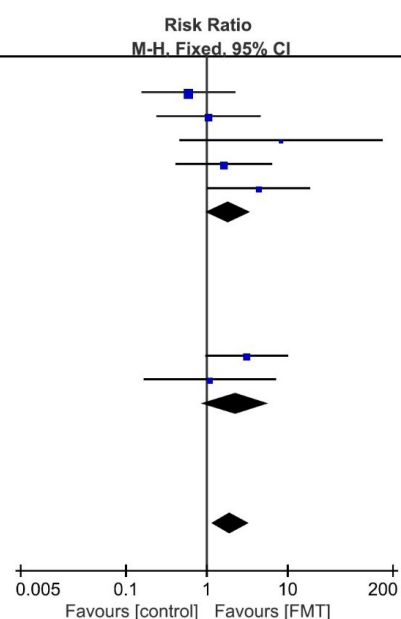
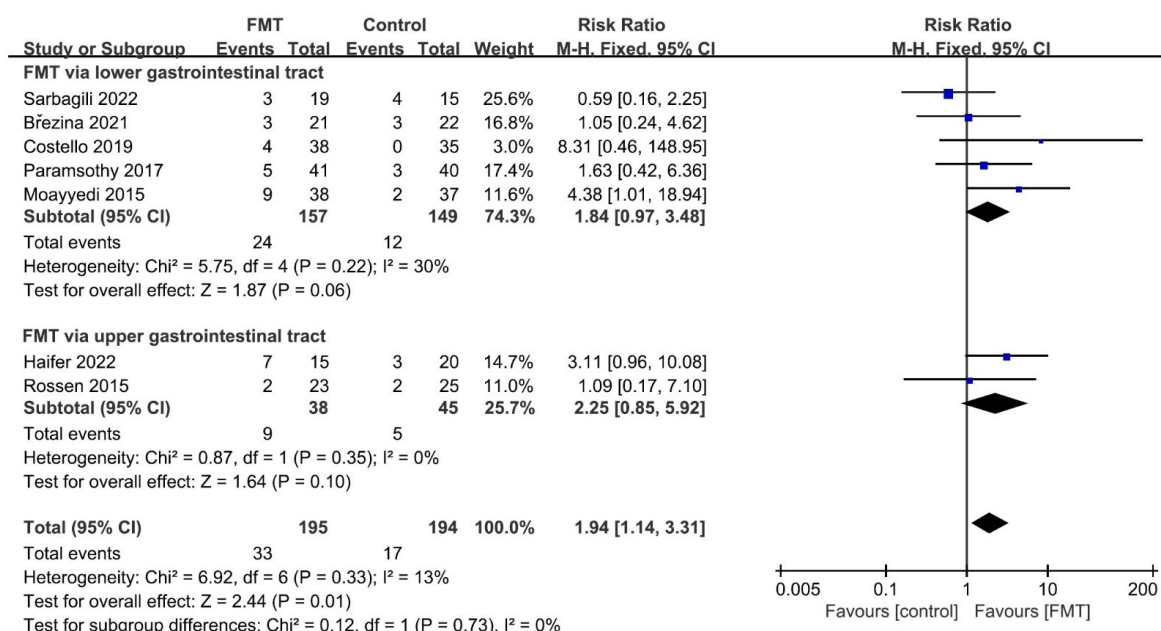


Figure S7 Forest graph showing the risk ratios of endoscopic remission rates between FMT-treated and control patients with subgroup analyses based on the delivery route of FMT. FMT, fecal microbial transplant.

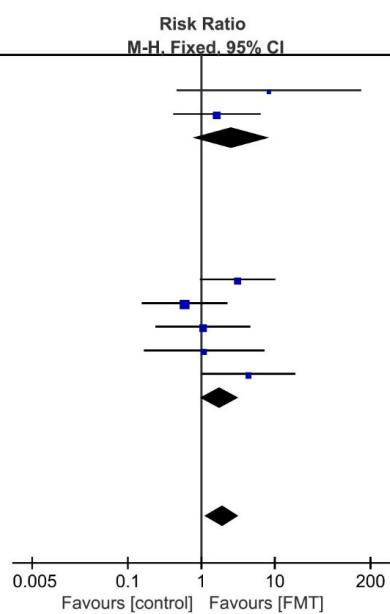
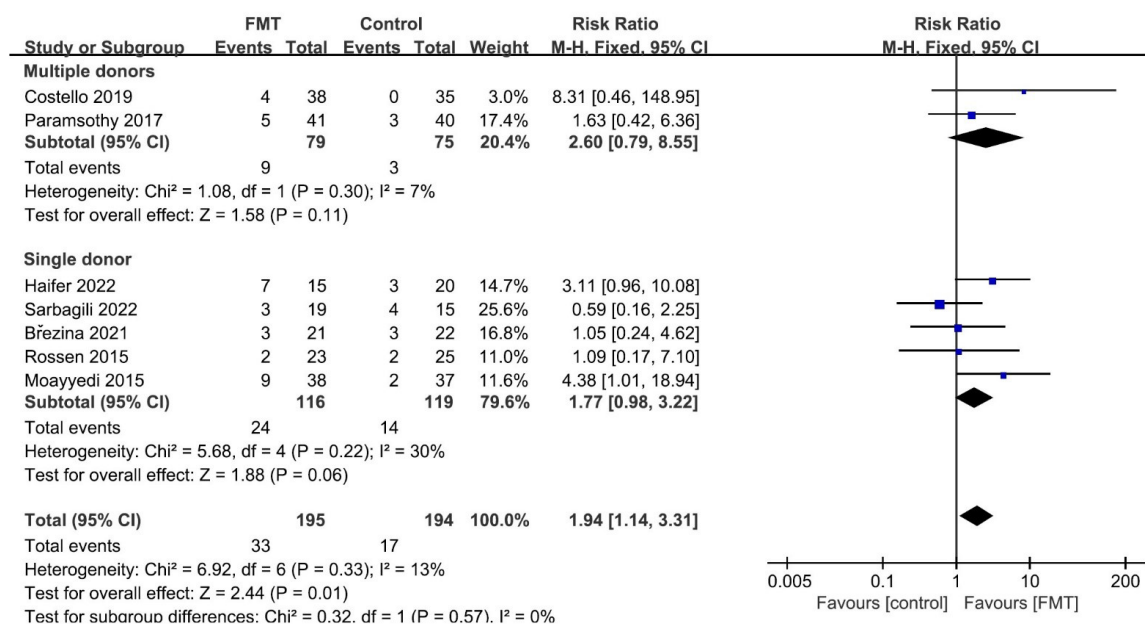


Figure S8 Forest graph showing risk ratios of endoscopic remission rates between FMT-treated and control patients with subgroup analyses based on the type of donor. FMT, fecal microbial transplant.

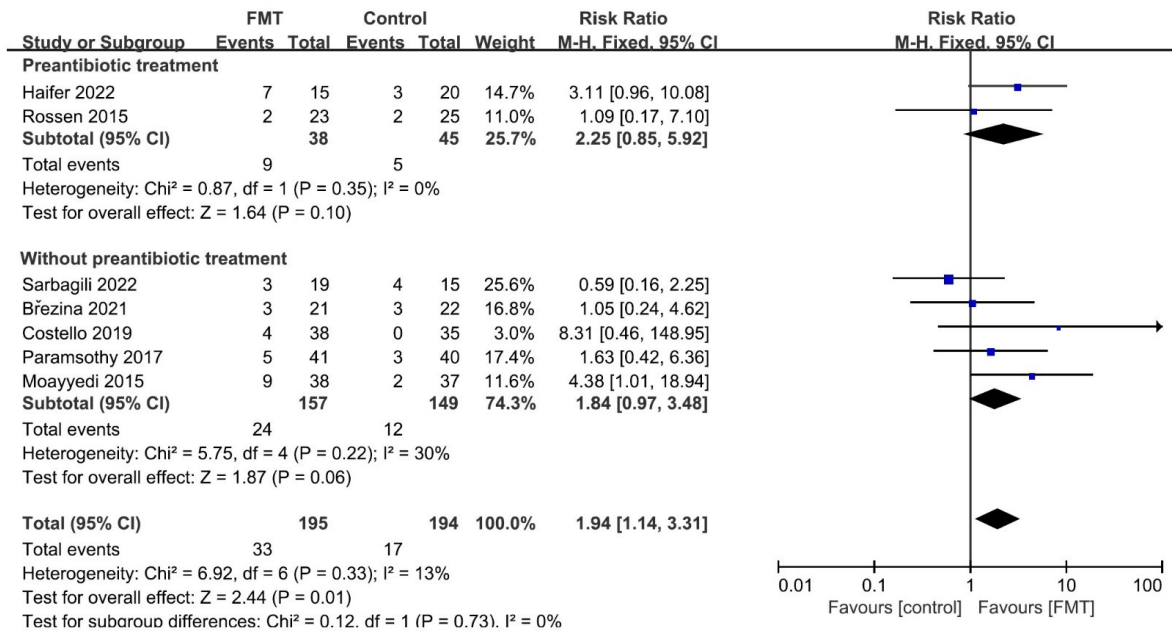


Figure S9 Forest graph showing the risk ratios of endoscopic remission rates between FMT-treated and control patients with subgroup analyses based on the antibiotic pretreatment. FMT, fecal microbial transplant.

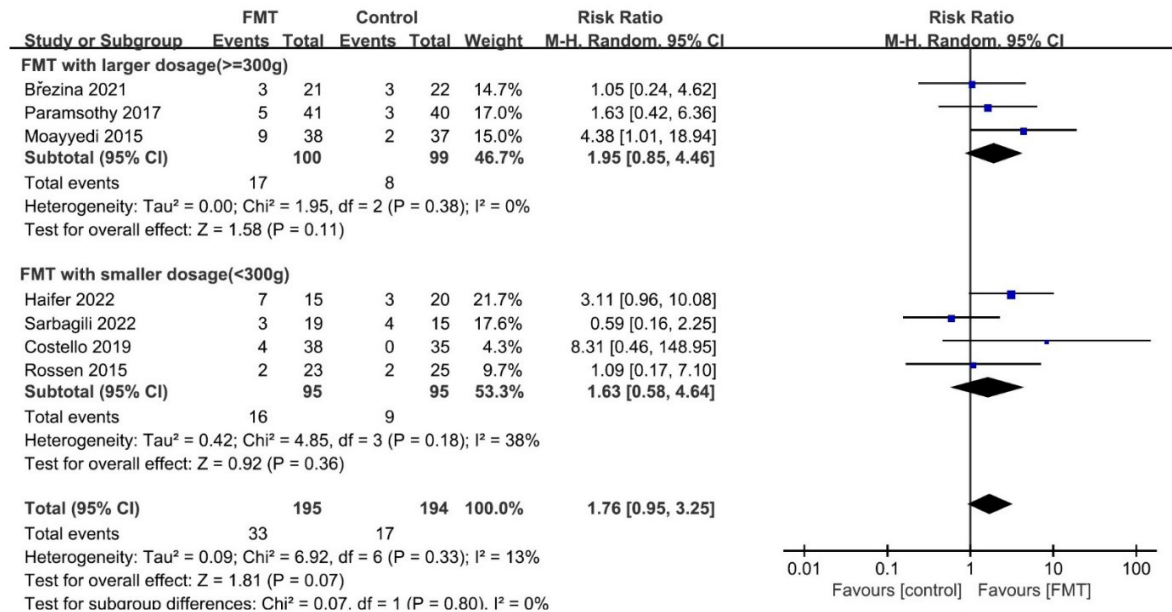


Figure S10 Forest graph showing risk ratios of endoscopic remission rates between FMT-treated and control patients with subgroup analyses based on the total dosage. FMT, fecal microbial transplant.

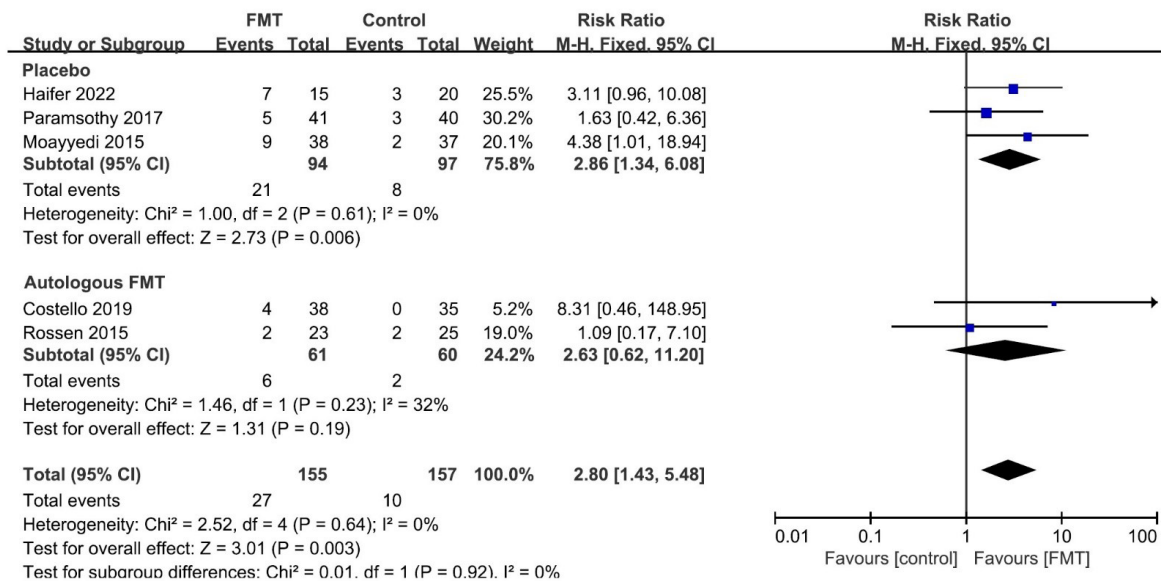


Figure S11 Forest graph showing the risk ratios of endoscopic remission rates between FMT-treated and control patients with subgroup analyses based on control treatments. FMT, fecal microbial transplant.