

Figure S1 Treatment strategies among patients with different grade, vital status, marital status, and gender. S, surgery alone; RT, radiotherapy alone; CT, chemotherapy alone; S+RT, surgery and radiotherapy; S+CT, surgery and chemotherapy; CRT, chemotherapy and radiotherapy; S+CRT, surgery, chemotherapy, and radiotherapy.

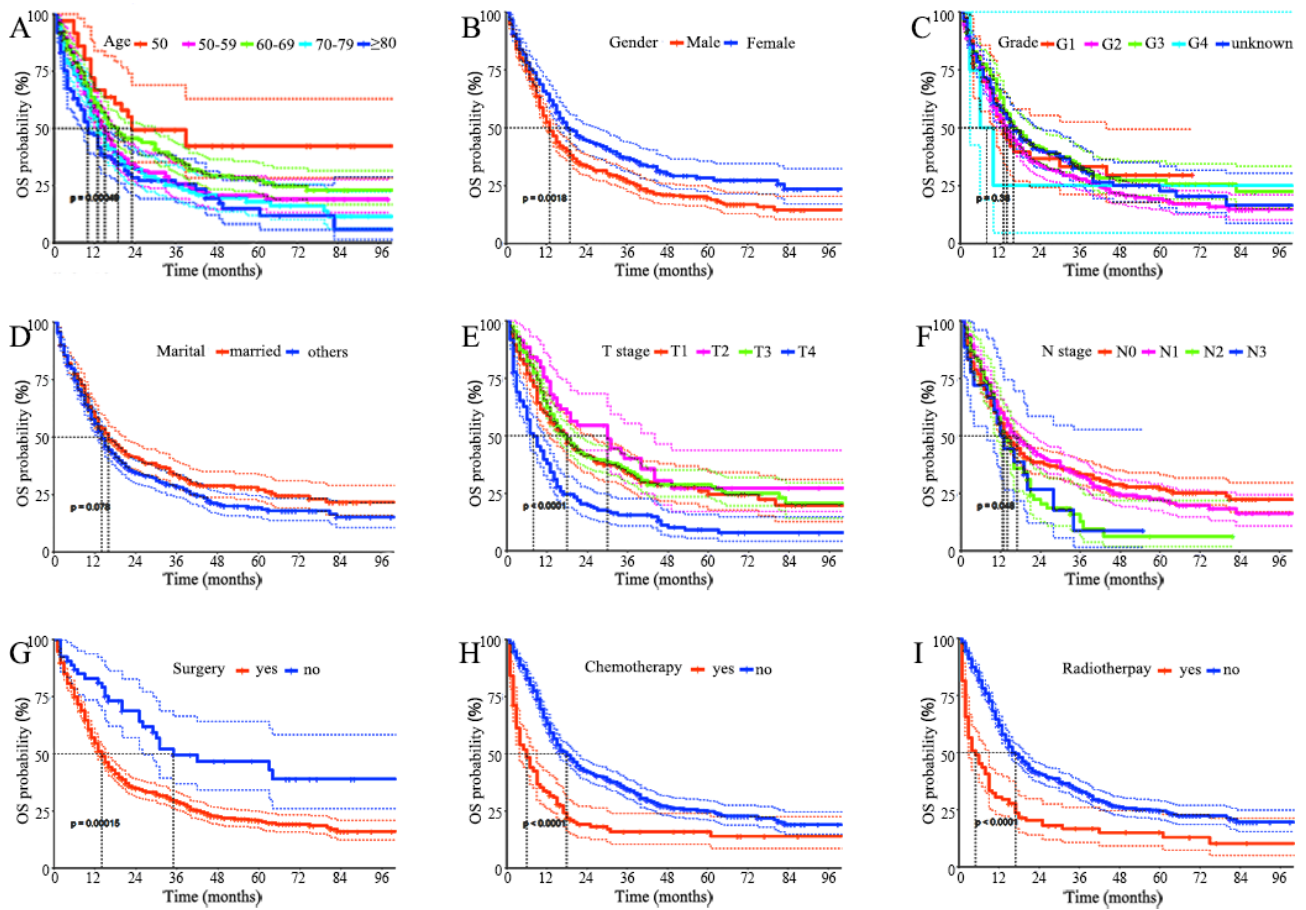


Figure S2 Kaplan-Meier OS curves for patients with different subgroups. (A) age, (B) gender, (C) grade, (D) marital status, (E) T stage, (F) N stage, (G) surgery, (H) chemotherapy, and (I) radiotherapy. OS, overall survival; ECSS, esophageal cancer-specific survival.

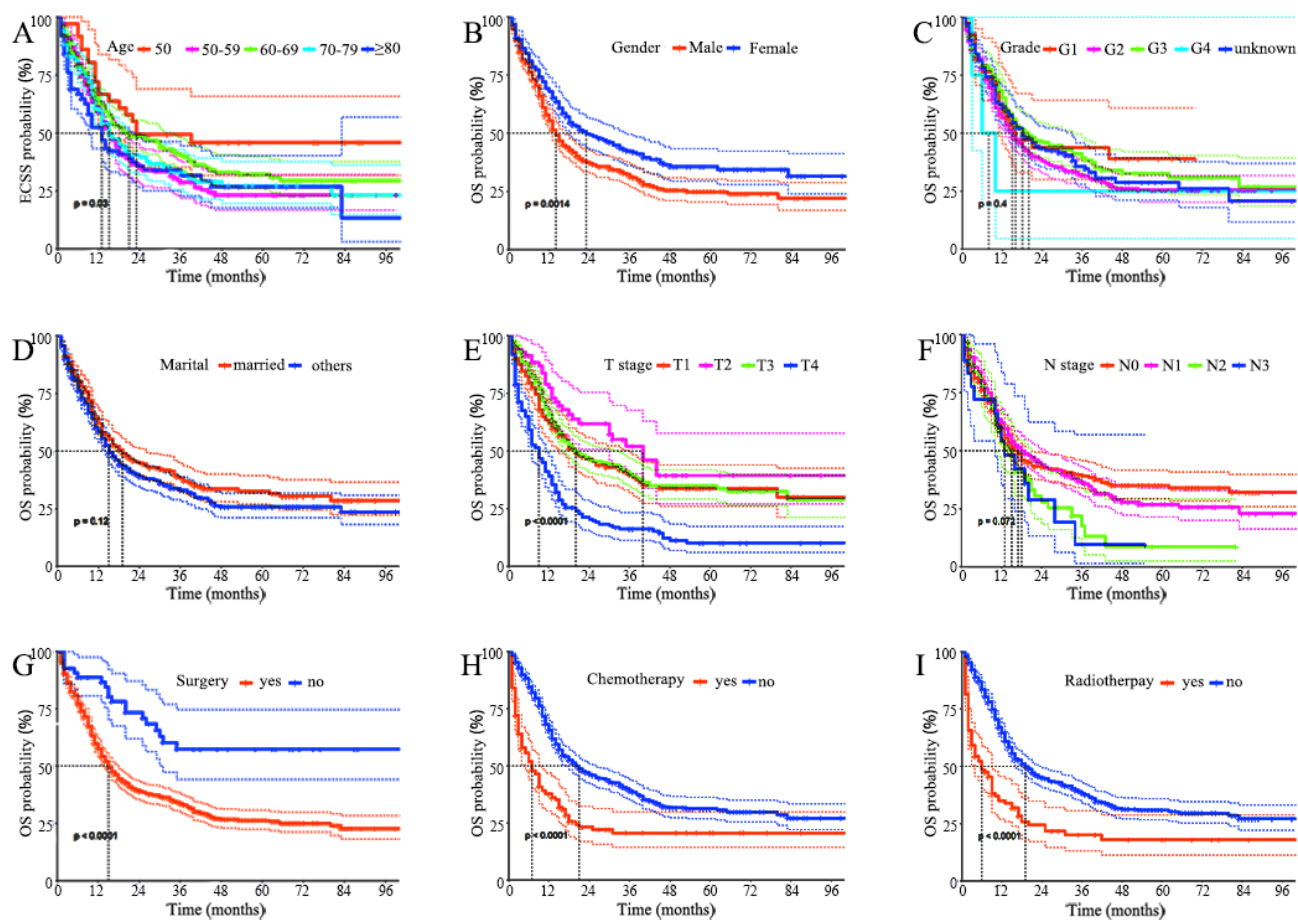


Figure S3 Kaplan-Meier ECSS curves for patients with different subgroups. (A) age, (B) gender, (C) grade, (D) marital status, (E) T stage, (F) N stage, (G) surgery, (H) chemotherapy, and (I) radiotherapy. OS, overall survival; ECSS, esophageal cancer-specific survival.

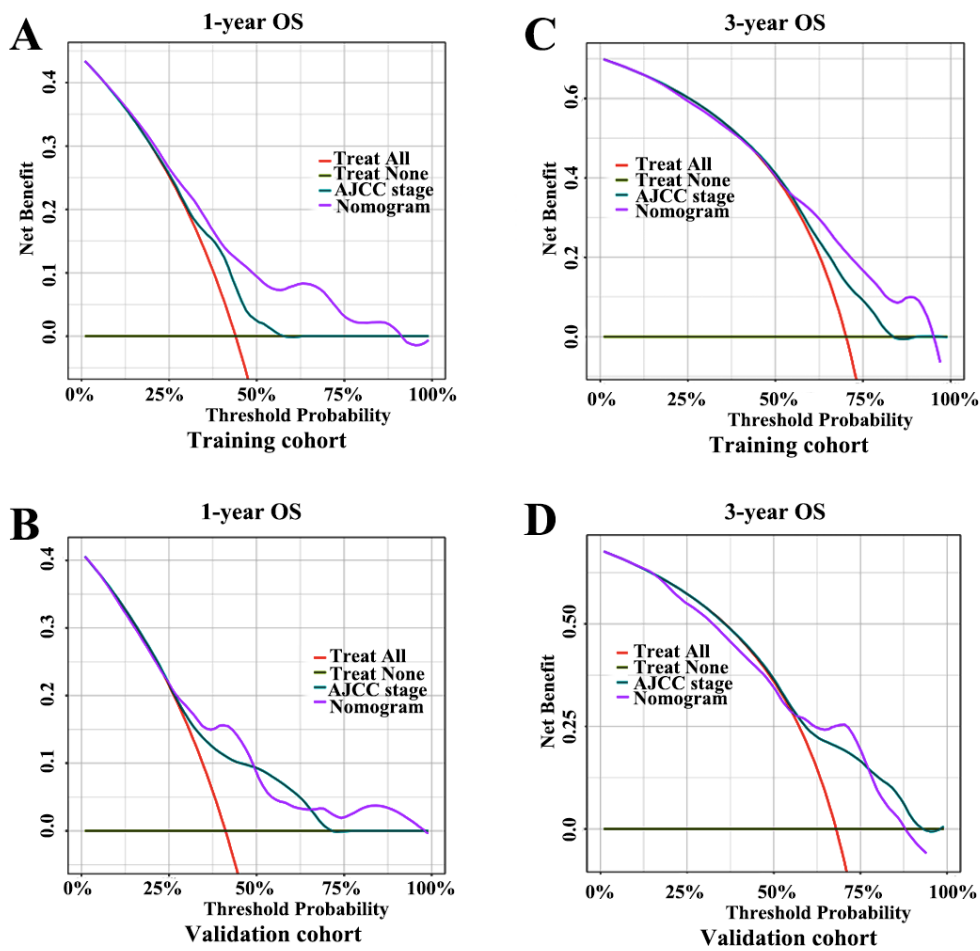


Figure S4 DCA of nomograms for predicting 1- and 3-year OS. (A) DCA of nomogram to predicting 1-year OS in the training cohort, (B) DCA of nomogram to predicting 1-year OS in the validation cohort, (C) DCA of nomogram to predicting 3-year OS in the training cohort, and (D) DCA of nomogram to predicting 3-year OS in the validation cohort. AJCC, American Joint Committee on Cancer; DCA, decision curve analyses; OS, overall survival.

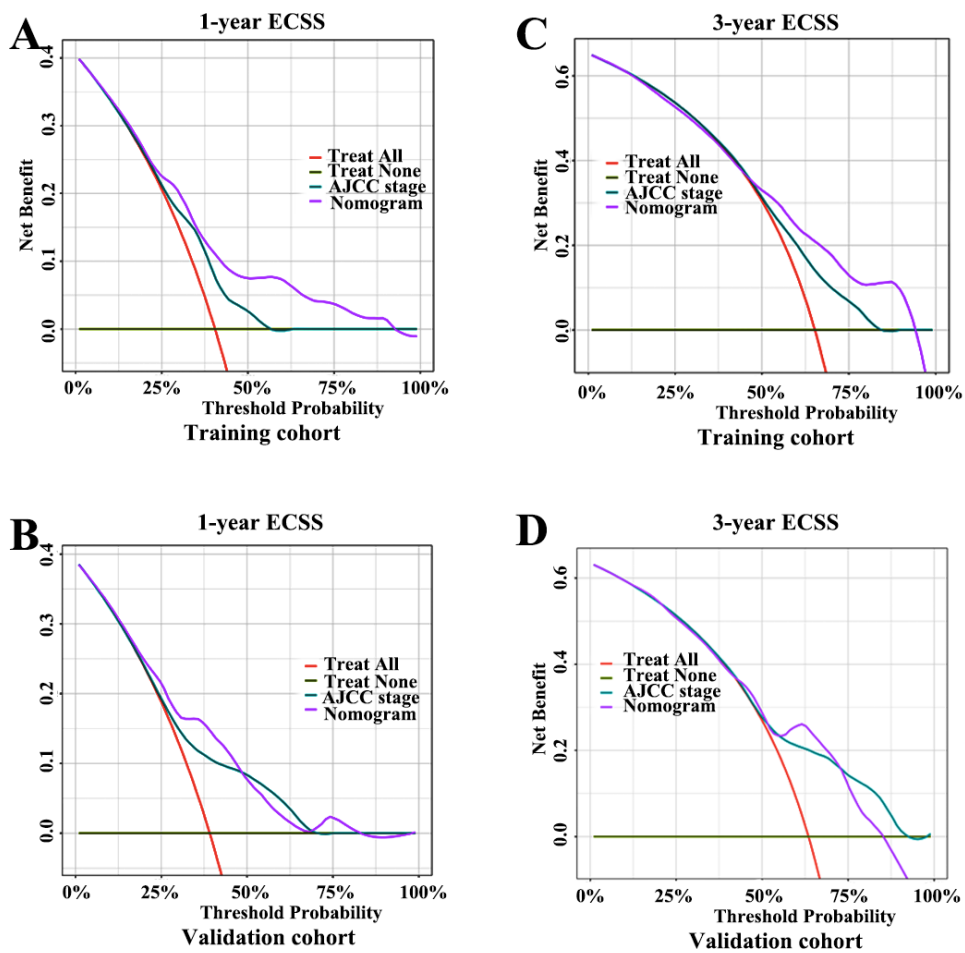


Figure S5 DCA of nomograms for predicting 1- and 3-year ECSS. (A) DCA of nomogram to predicting 1-year ECSS in the training cohort, (B) DCA of nomogram to predicting 1-year ECSS in the validation cohort, (C) DCA of nomogram to predicting 3-year ECSS in the training cohort, and (D) DCA of nomogram to predicting 3-year ECSS in the validation cohort. AJCC, American Joint Committee on Cancer; DCA, decision curve analyses; ECSS, esophageal cancer-specific survival.