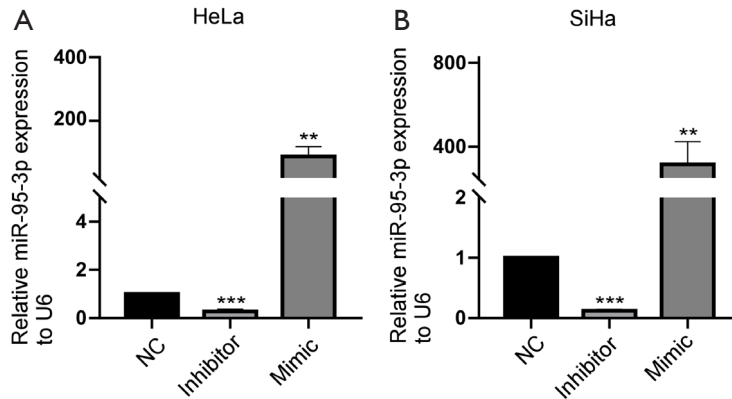


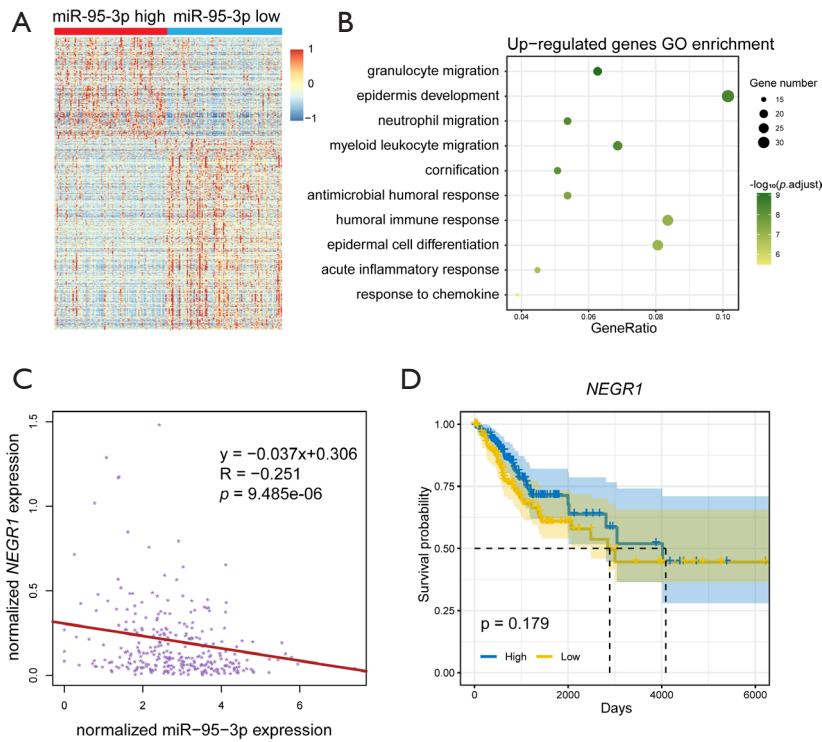
## Supplementary

**Table S1** The sequences of the inhibitor and the mimic of miR-95-3p and the sequences of the primers of miR-95-3p, VCAM1, and U6

Inhibitor/mimics/primers	Sequences
The sequences of the inhibitor and the mimics	
hsa-mir-95-3p inhibitor	UGCUCAAUAAAUACCCGUUGAA
hsa-mir-95-3p mimics	UUCAACGGGUAUUUUUAUGAGCA
	UGCUCAAUAAAUACCCGUUGAA
miRNA NC	UCACAACCUCCUAGAAAGAGUAGA
	UCUACUCUUUCUAGGAGGUUGUGA
The sequences of primers	
hsa-mir-95-3p Forward	AGGCGTGCTTCAACGGGTATT
hsa-mir-95-3p Reverse	GTCGTATCCAGTGCAGGGTCC
hsa-mir-95-3p tem-loop	GTCGTATCCAGTGCAGGGTCCGAGGTATTGCGACTGGATACGACTGCTCAA
VCAM1 Forward	TTCTGTGCCACAGTAAGG
VCAM1 Reverse	GCAGCTTTGTGGATGGATTC
U6-Forward	CTCGCTTCGGCAGCAC
U6-Reverse	AACGCTTCACGAATTGCGT



**Figure S1** RT-PCR analysis of miR-95-3p inhibitor and mimic expression in human cervical cancer cell lines. (A) HeLa, (B) SiHa. \*\* $P < 0.01$ , \*\*\* $P < 0.001$ .



**Figure S2** Related to *Figure 4*. (A) Expression heatmap of all the differentially expressed genes in the miR-95-3p-high group versus the miR-95-3p-low group; (B) GO terms of the upregulated genes in the miR-95-3p-high group versus the miR-95-3p-low group; (C) scatter plot showing the negative correlation between miR-95-3p expression level and *NEGR1* expression level in the CESC tumor samples; (D) the Kaplan-Meier plot of *NEGR1* in CESC. GO, Gene Ontology; CESC, cervical squamous cell carcinoma.