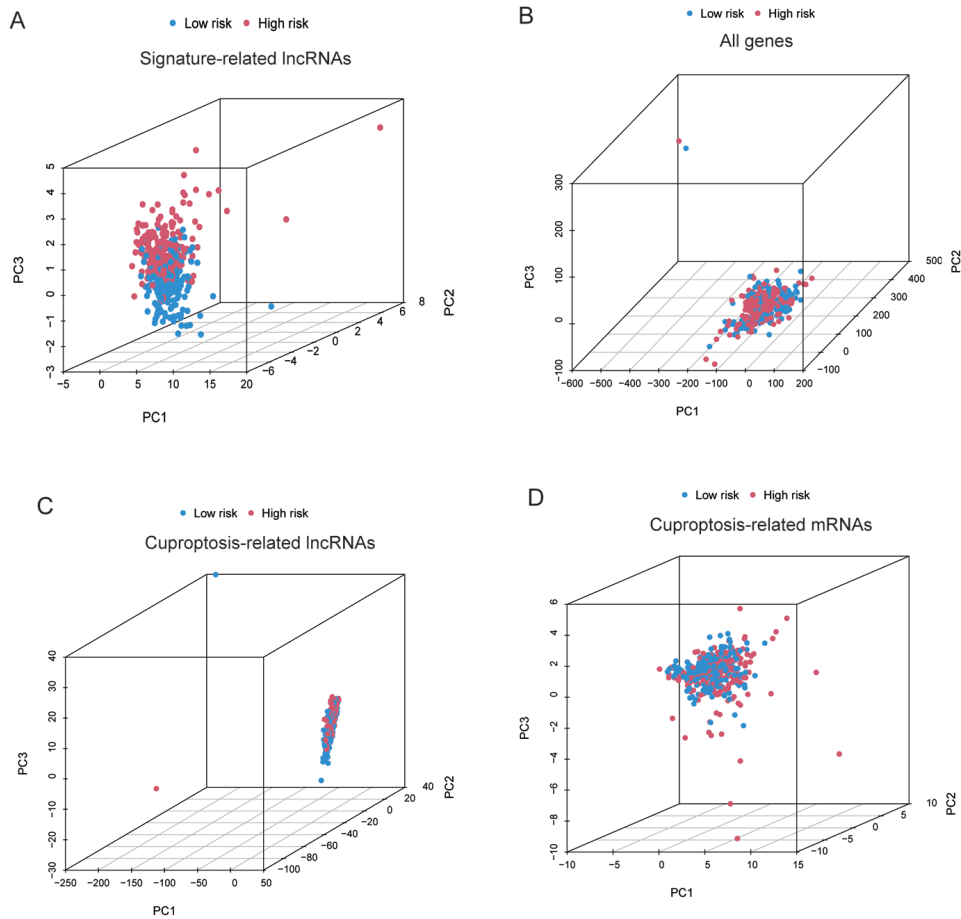
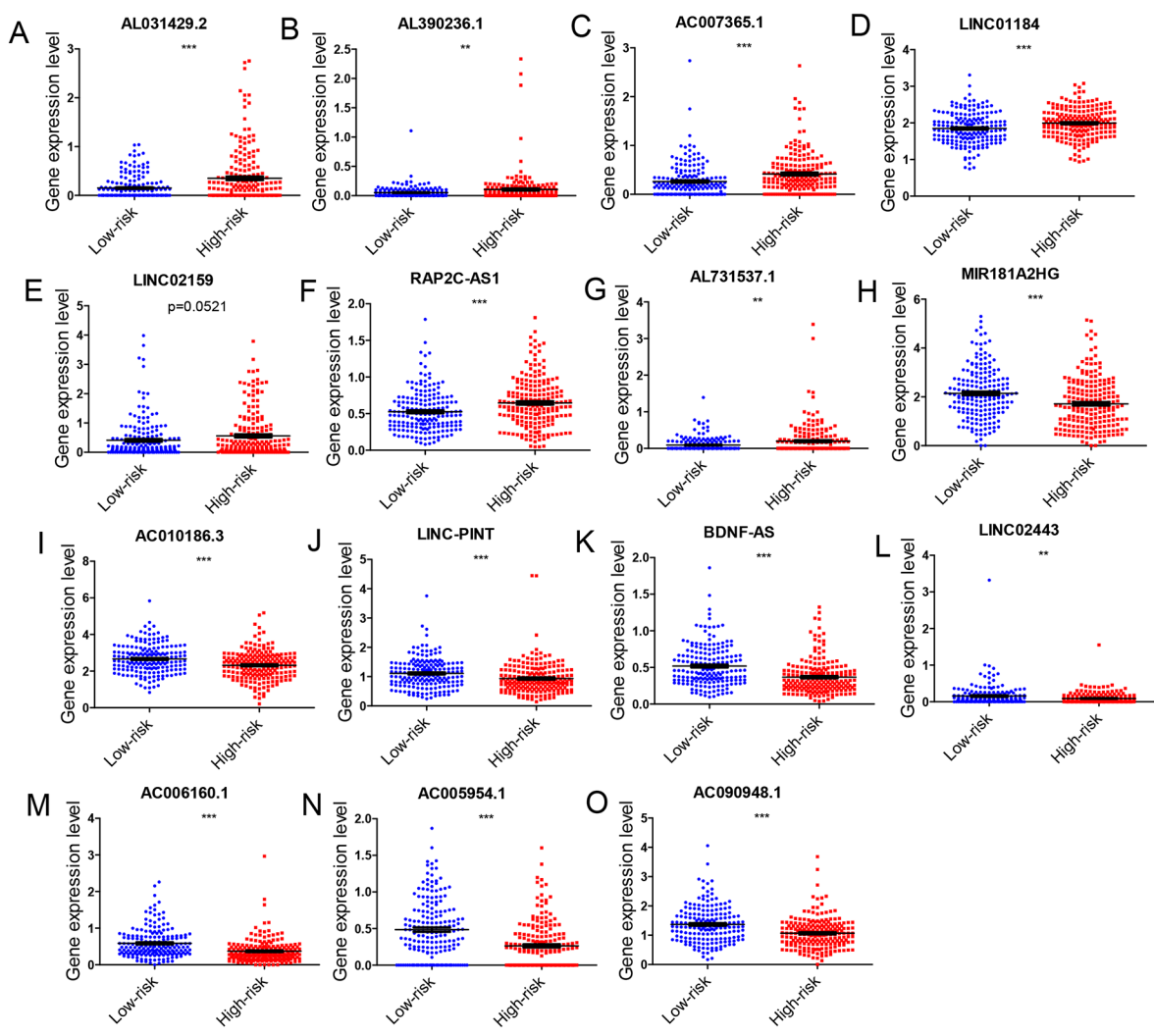


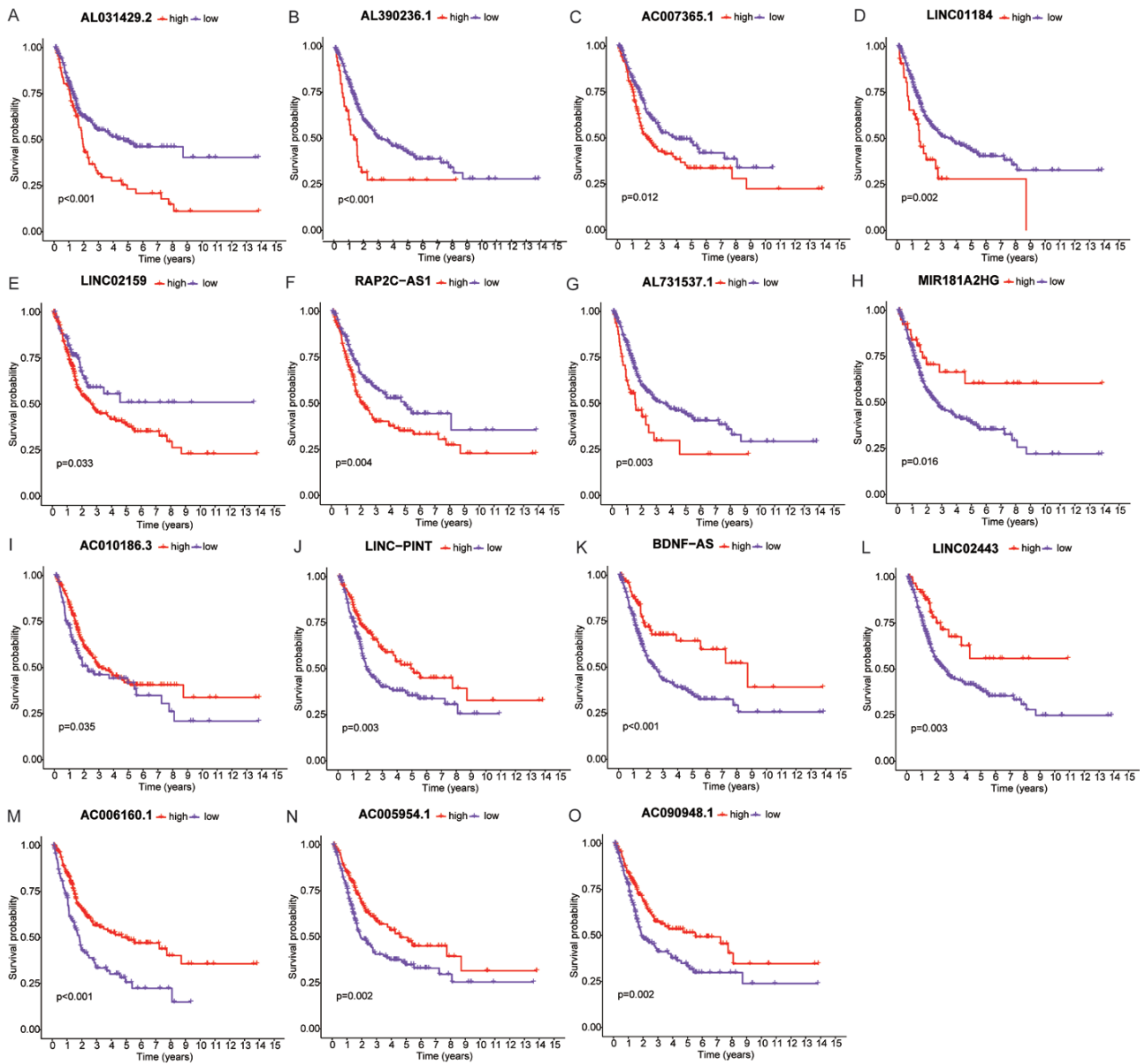
**Figure S1** The prognostic analysis in stage I-II and stage III-IV BLCA patients based on risk score.



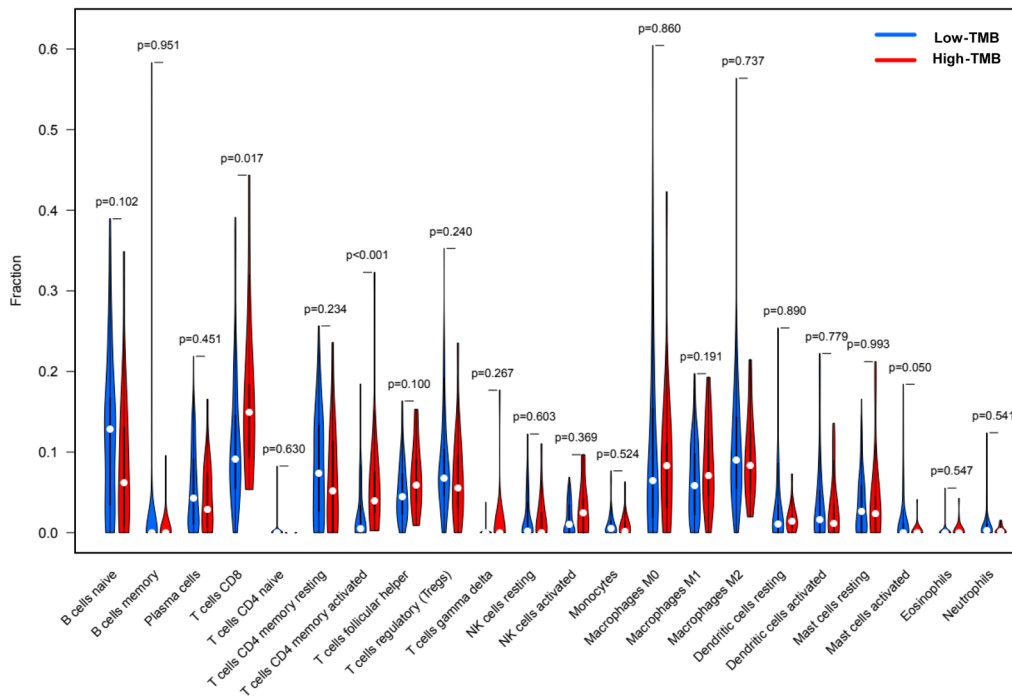
**Figure S2** PCA based on the signature-related lncRNAs, all genes, cuproptosis-related lncRNAs, and cuproptosis-related mRNAs.



**Figure S3** The expression of 15 cuproptosis-related lincRNAs in TCGA database. \*\*,  $P < 0.01$ ; \*\*\*,  $P < 0.001$ .



**Figure S4** The respective correlation of 15 cuproptosis-related lncRNAs with prognosis.



**Figure S5** The relationship between TMB and immune cells.