

Figure S1 Flow diagram for selecting HCC patients. HCC, hepatocellular carcinoma; TACE, transarterial chemoembolization.

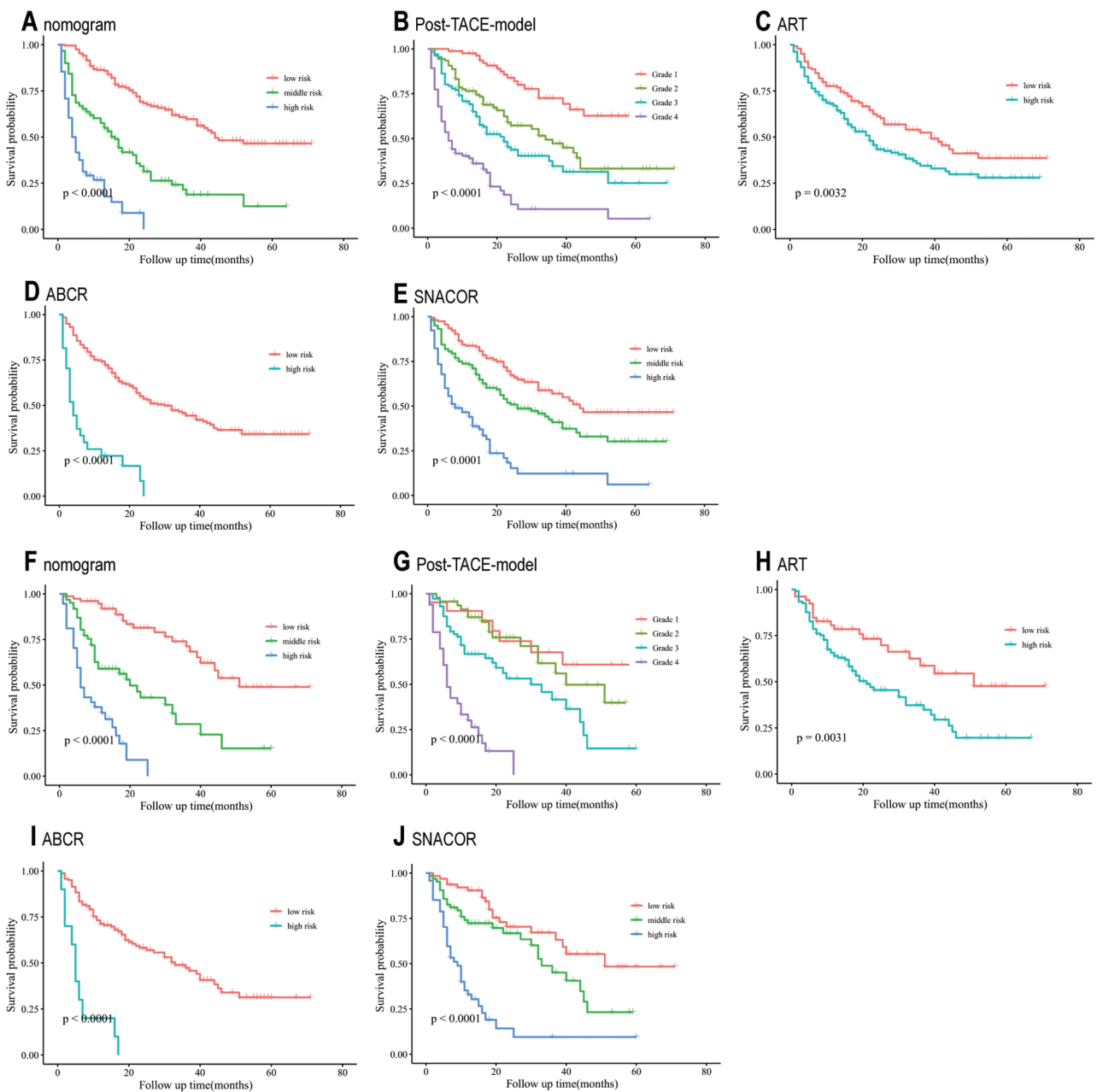


Figure S2 Kaplan-Meier curves of risk group stratification for OS in the training cohort (A-E) and validation cohort (F-J) categorized according to different prognostic models. (A,F) Model of the nomogram; (B,G) post-TACE-Predict Model; (C,H) model of ART score; (D,I) model of ABCR score; (E,J) model of SNACOR score. TACE, transarterial chemoembolization; ART, Assessment for Retreatment with TACE; ABCR, AFP level BCLC stage, Child-Pugh class, Response after TACE; SNACOR, Tumor Size and Number, baseline AFP, Child-Pugh and Objective radiological Response; OS, overall survival.