

Figure S1 Dynamics of body weight over time in comparison of the four experimental groups. SuHx, Sugen5416/hypoxia; WT, wild-type; KO, knockout.

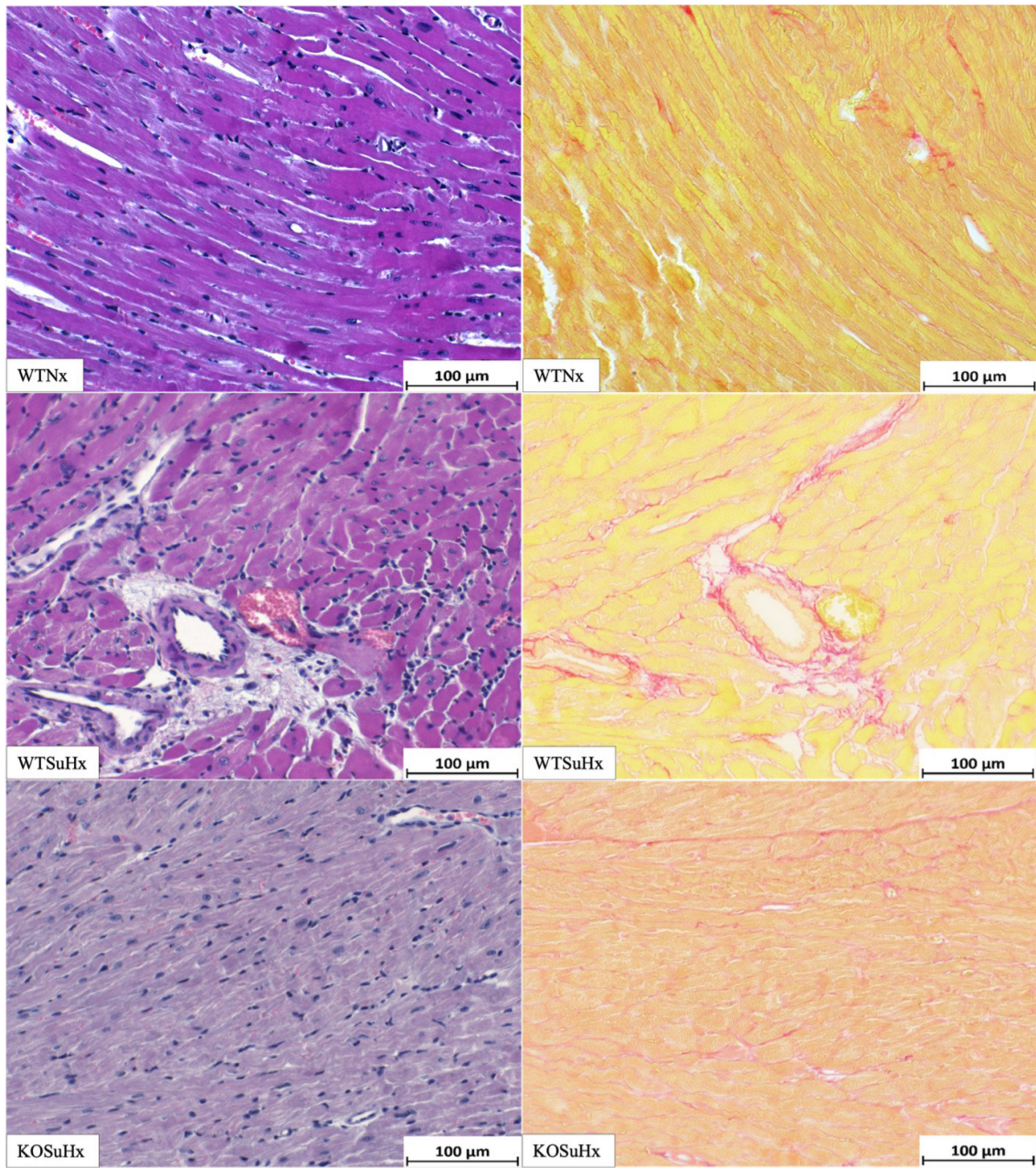


Figure S2 Representative images of the H&E (left) and PSR (right) stained cardiac tissue sections assessed by light microscopy for the different experimental groups WTNx, WTSuHx and KOSuHx. SuHx, Sugen5416/hypoxia; WT, wild-type; KO, knockout.

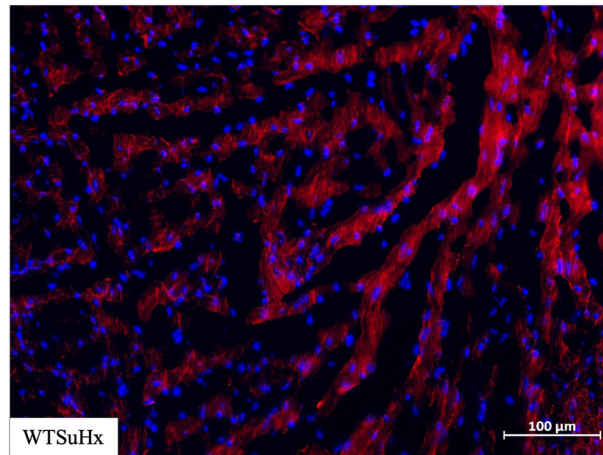


Figure S3 Representative images of immunofluorescence labelling of Col3 1 (Cy3, red fluorescence) in cardiac tissue in WTSuHx group. SuHx, Sugen5416/hypoxia; WT, wild-type; KO, knockout.