

Figure S1 Expression of cleaved caspase-1 was the lowest in cardiomyocytes treated by LPS of 4 µg/mL. Expression of cleaved caspase-1 in cardiomyocytes treated by different concentration of LPS. *, P<0.05. **, P<0.01. ***, P<0.001. LPS, lipopolysaccharide.

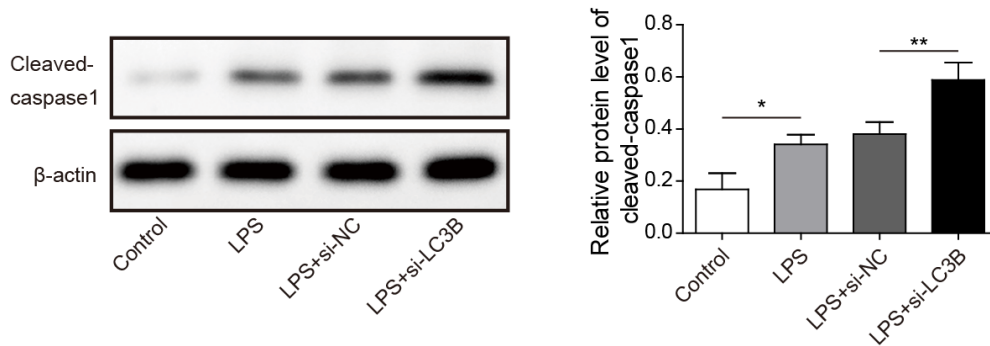


Figure S2 Inhibition of autophagy enhanced the level of pyroptosis. Expression of cleaved caspase-1 in cardiomyocytes after treated with LPS and transfected with si-LC3B. *, P<0.05. **, P<0.01. LPS, lipopolysaccharide.

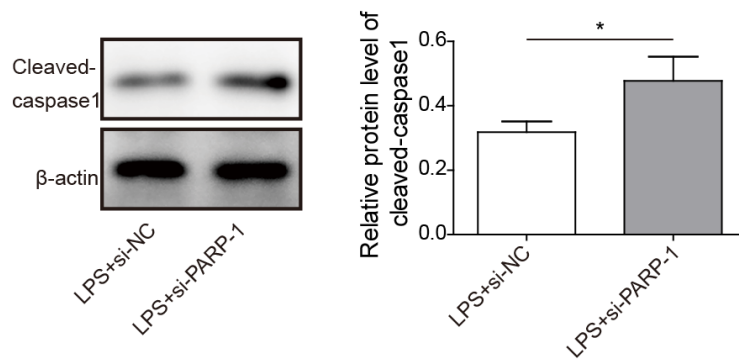


Figure S3 Knockdown of PARP-1 enhanced the expression of cleaved caspase-1. Expression of cleaved caspase-1 in cardiomyocytes after treated with LPS and transfected with si-PARP-1. *, P<0.05. LPS, lipopolysaccharide; PARP-1, poly ADP-ribose polymerase-1.