

Table S1 Method of mitral valve area assessment before and after PBMV in the study patients

Method of MVA assessment	Number of patients
Before PBMV	
Planimetry	591
No planimetry, pressure half-time method used	6
Neither planimetry nor pressure half-time available (missing information on MVA before PBMV)	1
After PBMV	
Planimetry	581
No information of MVA after PBMV	17
Emergency surgery	15
MVR	13
MVR + surgery for tamponade	1
Surgery for tamponade	1
Stroke immediately after PBMV	1
Moderate to severe MR, no surgery	1

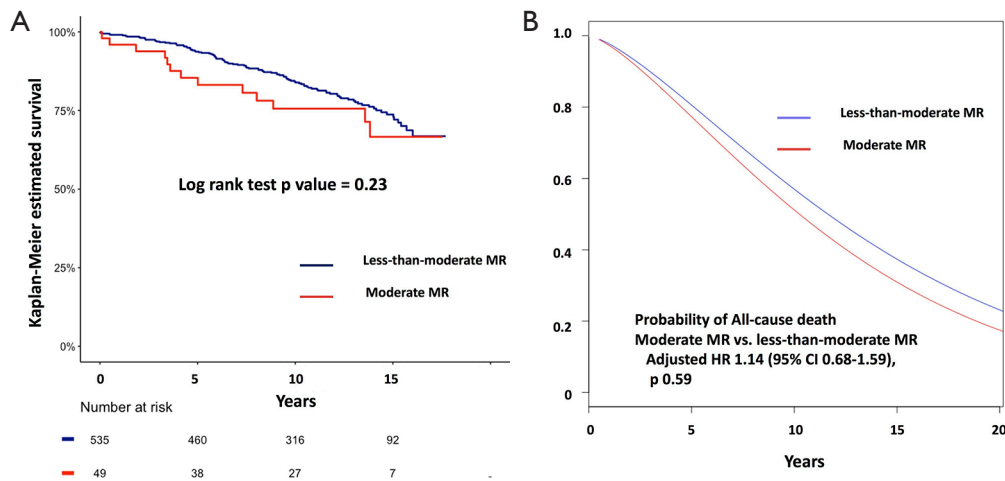


Figure S1 Kaplan-Meier survival curves (A) and adjusted survival probability of a composite of all-cause death (B) according to MR severity before PBMV. PBMV, percutaneous balloon mitral valvuloplasty; MR, mitral regurgitation.