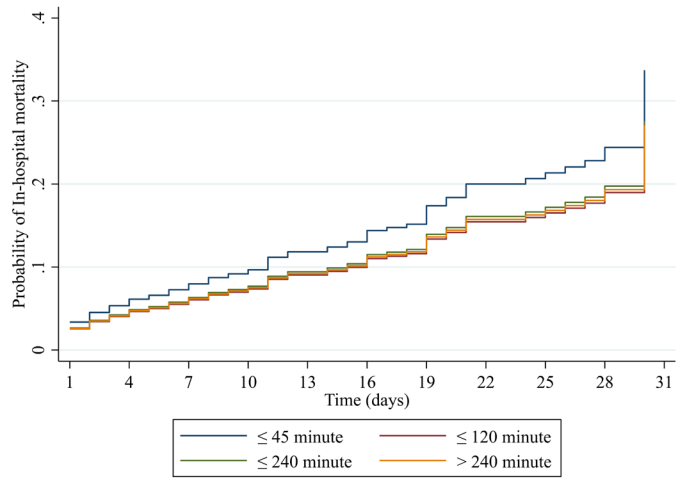


**Table S1** Type of time delay associated with death: a univariate analysis

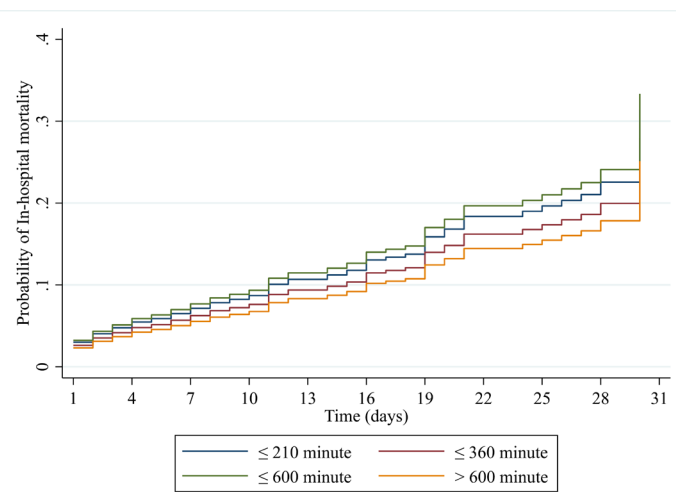
Characteristics	Time at risk (days)	Incidence rate	HR (95% CI)	P
Time of patients delay, minute				
>240	4,776	0.015	0.7 (0.5, 0.9)	0.02
≤240	3,265	0.016	0.7 (0.5, 0.9)	0.02
≤120	4,673	0.015	0.7 (0.5, 0.9)	0.01
≤45	4,605	0.023	1	
Time of system delay, minute				
>270	4,933	0.019	1.9 (1.3, 2.8)	0.001
≤270	3,699	0.019	1.9 (1.2, 2.8)	0.003
≤180	5,563	0.018	1.6 (1.1, 2.3)	0.02
≤90	3,124	0.011	1	
Time of D2D time, minute				
>90	4,987	0.022	1.9 (1.3, 2.6)	<0.001
≤90	3,639	0.019	1.6 (1.1, 2.2)	0.02
≤60	5,063	0.014	1.2 (0.8, 1.7)	0.43
≤30	3,630	0.014	1	
Time of treatment delay, minute				
>600	4,336	0.015	0.9 (0.7, 1.3)	0.73
≤600	3,829	0.021	1.3 (0.9, 1.7)	0.15
≤360	5,074	0.016	1.0 (0.7, 1.3)	0.79
≤210	4,080	0.018	1	

**Table S2** Factors associated with death: A multivariate analysis for patient delay and treatment delay

Factors	Time of patients delay		Time of treatment delay	
	HR (95% CI)	P	HR (95% CI)	P
Time of patients delay, minute				
>240	0.8 (0.6, 1.0)	0.084		
≤240	0.8 (0.6, 1.1)	0.165		
≤120	0.8 (0.6, 1.0)	0.069		
≤45	1			
Time of treatment delay, minute				
>600			0.8 (0.5, 1.1)	0.13
≤600			1.1 (0.8, 1.5)	0.66
≤360			0.9 (0.6, 1.2)	0.41
≤210			1	
Refer				
Yes	0.9 (0.7, 1.2)	0.548	0.9 (0.7, 1.2)	0.59
No	1		1	
Hospital level				
Level 2	1.1 (0.7, 1.9)	0.656	1.1 (0.7, 1.9)	0.68
Level 1	1		1	
Number of PCI procedure/centre				
≥500 case	1.0 (0.5, 1.9)	0.958	1.0 (0.5, 2.0)	0.98
200–499 case	0.9 (0.5, 1.9)	0.8848	0.9 (0.5, 1.9)	0.88
<200 case	1		1	
Age, year	1.02 (1.01, 1.04)	<0.001	1.02 (1.01, 1.04)	<0.001
Smoking status				
Current smoker	0.9 (0.7, 1.1)	0.282	0.8 (0.6, 1.1)	0.18
Ex-smoker	0.6 (0.5, 0.9)	0.007	0.6 (0.4, 0.9)	0.01
Never	1		1	
CKD				
Yes	2.7 (2.1, 3.5)	<0.001	2.7 (2.1, 3.5)	<0.001
No	1		1	
Dyslipidemia				
Yes	0.6 (0.5, 0.8)	<0.001	0.6 (0.5, 0.8)	<0.001
No	1		1	
Prior heart failure				
Yes	1.5 (1.1, 2.1)	0.009	1.6 (1.2, 2.2)	0.01
No	1		1	
On dialysis				
Yes	2.2 (1.1, 4.2)	0.021	2.3 (1.2, 4.4)	0.01
No	1		1	



**Figure S1** Probability of death by time of patients delay.



**Figure S2** Probability of death by time of treatment delay.

**Table S3** Baseline characteristics of participants with time of D2D time delay

Characteristics	Time of Cath-lab delay (minute)				P
	≤30 (n=1,062)	≤60 (n=1,113)	≤90 (n=754)	>90 (n=945)	
Age, year, mean (SD)	61.1 (12.6)	61.8 (13.2)	64.0 (13.1)	64.5 (13.0)	<0.001
Gender, n (%)					
Female	818 (77.0)	832 (74.8)	555 (73.6)	656 (69.4)	0.001
Male	244 (23.0)	281 (25.2)	199 (26.4)	289 (30.6)	
Refer case, n (%)					
Yes	991 (93.3)	881 (79.2)	473 (62.7)	526 (55.7)	<0.001
No	71 (6.7)	232 (20.8)	281 (37.3)	419 (44.3)	
BMI, kg/m <sup>2</sup> , mean (SD)	24.4 (4.2)	24.0 (4.0)	23.8 (4.2)	24.0 (4.2)	0.01
Diabetes mellitus, n (%)					
Yes	458 (43.1)	519 (46.6)	338 (44.8)	450 (47.6)	0.18
No	604 (56.9)	594 (53.4)	416 (55.2)	495 (52.4)	
Hypertension, n (%)					
Yes	542 (51.0)	551 (49.5)	387 (51.3)	508 (53.8)	0.29
No	520 (49.0)	562 (50.5)	367 (48.7)	437 (46.2)	
Dyslipidemia, n (%)					
Yes	511 (48.1)	531 (47.7)	341 (45.2)	458 (48.5)	0.55
No	551 (51.9)	582 (52.3)	413 (54.8)	487 (51.5)	
LDL group, n (%)					
>180	55 (15.5)	63 (12.3)	41 (12.3)	41 (10.1)	0.18
55–180	294 (83.1)	435 (84.8)	278 (83.7)	353 (86.7)	
<55	5 (1.4)	15 (2.9)	13 (3.9)	13 (3.2)	
Smoking status, n (%)					
Current smoker	499 (47.0)	543 (48.8)	315 (41.8)	381 (40.3)	<0.001
Ex-smoker	212 (20.0)	184 (16.5)	148 (19.6)	179 (18.9)	
Never	351 (33.1)	386 (34.7)	291 (38.6)	385 (40.7)	
CKD, n (%)					
Yes	264 (24.9)	310 (27.9)	262 (34.7)	348 (36.8)	<0.001
No	798 (75.1)	803 (72.1)	492 (65.3)	597 (63.2)	
On dialysis, n (%)					
Yes	8 (0.8)	8 (0.7)	7 (0.9)	15 (1.6)	0.18
No	1,054 (99.2)	1,105 (99.3)	747 (99.1)	930 (98.4)	
Cerebrovascular disease, n (%)					
Yes	45 (4.2)	46 (4.1)	44 (5.8)	62 (6.6)	0.03
No	1,017 (95.8)	1,067 (95.9)	710 (94.2)	883 (93.4)	
Family history of premature CAD, n (%)					
Yes	84 (7.9)	49 (4.4)	33 (4.4)	46 (4.9)	<0.001
No	978 (92.1)	1,064 (95.6)	721 (95.6)	899 (95.1)	
Peripheral arterial disease, n (%)					
Yes	5 (0.5)	6 (0.5)	7 (0.9)	15 (1.6)	0.03
No	1,057 (99.5)	1,107 (99.5)	747 (99.1)	930 (98.4)	
Prior MI, n (%)					
Yes	95 (8.9)	71 (6.4)	51 (6.8)	89 (9.4)	0.02
No	967 (91.1)	1,042 (93.6)	703 (93.2)	856 (90.6)	
Known CAD, n (%)					
Yes	47 (4.4)	52 (4.7)	38 (5.0)	66 (7.0)	0.05
No	1,015 (95.6)	1,061 (95.3)	716 (95.0)	879 (93.0)	
Prior heart failure, n (%)					
Yes	45 (4.2)	46 (4.1)	43 (5.7)	105 (11.1)	<0.001
No	1,017 (95.8)	1,067 (95.9)	711 (94.3)	840 (88.9)	
Prior PCI, n (%)					
Yes	48 (4.5)	54 (4.9)	40 (5.3)	54 (5.7)	0.64
No	1,014 (95.5)	1,059 (95.1)	714 (94.7)	891 (94.3)	
Prior CABG, n (%)					
Yes	1 (0.1)	2 (0.2)	3 (0.4)	5 (0.5)	0.25
No	1,061 (99.9)	1,111 (99.8)	751 (99.6)	940 (99.5)	
Cardiogenic shock at start of PCI, n (%)					
Yes	232 (21.8)	266 (23.9)	209 (27.7)	249 (26.3)	0.02
No	830 (78.2)	847 (76.1)	545 (72.3)	696 (73.7)	
Procedure complications, n (%)					
Yes	91 (8.6)	74 (6.6)	59 (7.8)	84 (8.9)	0.23
No	971 (91.4)	1,039 (93.4)	695 (92.2)	861 (91.1)	
Clinical relevant major bleeding, n (%)					
Yes	14 (1.3)	11 (1.0)	15 (2.0)	18 (1.9)	0.21
No	1,048 (98.7)	1,102 (99.0)	739 (98.0)	927 (98.1)	
Death status, n (%)					
Death	50 (4.7)	72 (6.5)	69 (9.2)	111 (11.7)	<0.001
Alive	1,012 (95.3)	1,041 (93.5)	685 (90.8)	834 (88.3)	

**Table S4** Baseline characteristics of participants with time of system delay

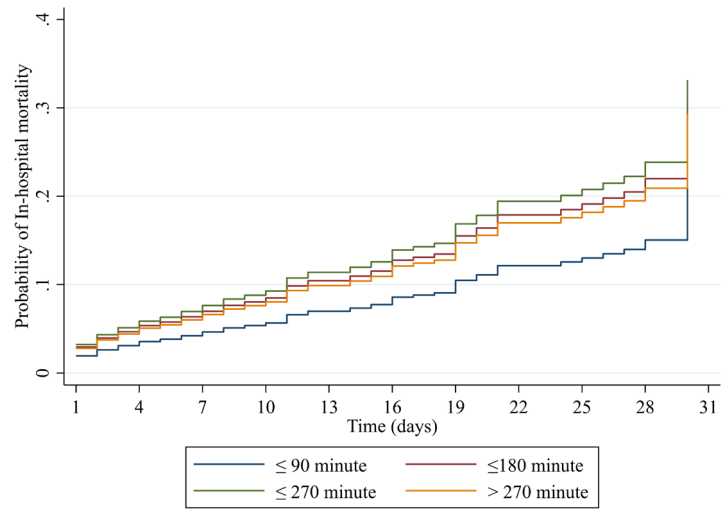
Characteristics	Time of system delay (minute)				P
	≤90 (n=726)	≤180 (n=1,346)	≤270 (n=804)	>270 (n=998)	
Age, year, mean (SD)	59.9 (12.9)	61.8 (13.0)	64.1 (13.0)	64.7 (12.7)	<0.001
Gender, n (%)					
Female	576 (79.3)	1,024 (76.1)	567 (70.5)	694 (69.5)	<0.001
Male	150 (20.7)	322 (23.9)	237 (29.5)	304 (30.5)	
Refer case, n (%)					
Yes	253 (34.8)	1,047 (77.8)	710 (88.3)	861 (86.3)	<0.001
No	473 (65.2)	299 (22.2)	94 (11.7)	137 (13.7)	
BMI, kg/m <sup>2</sup> , mean (SD)	24.6 (4.2)	24.3 (4.1)	23.8 (4.4)	23.5 (4.1)	<0.001
Diabetes mellitus, n (%)					
Yes	312 (43.0)	606 (45.0)	376 (46.8)	471 (47.2)	0.30
No	414 (57.0)	740 (55.0)	428 (53.2)	527 (52.8)	
Hypertension, n (%)					
Yes	380 (52.3)	686 (51.0)	423 (52.6)	499 (50.0)	0.66
No	346 (47.7)	660 (49.0)	381 (47.4)	499 (50.0)	
Dyslipidemia, n (%)					
Yes	376 (51.8)	663 (49.3)	353 (43.9)	449 (45.0)	0.003
No	350 (48.2)	683 (50.7)	451 (56.1)	549 (55.0)	
LDL group, n (%)					
>180	38 (13.4)	80 (14.9)	38 (11.0)	44 (9.9)	0.18
55–180	238 (84.1)	445 (83.0)	293 (85.2)	384 (86.7)	
<55	7 (2.5)	11 (2.1)	13 (3.8)	15 (3.4)	
Smoking status, n (%)					
Current smoker	325 (44.8)	637 (47.3)	350 (43.5)	426 (42.7)	0.26
Ex-smoker	145 (20.0)	239 (17.8)	156 (19.4)	183 (18.3)	
Never	256 (35.3)	470 (34.9)	298 (37.1)	389 (39.0)	
CKD, n (%)					
Yes	175 (24.1)	378 (28.1)	252 (31.3)	379 (38.0)	<0.001
No	551 (75.9)	968 (71.9)	552 (68.7)	619 (62.0)	
On dialysis, n (%)					
Yes	6 (0.8)	10 (0.7)	6 (0.7)	16 (1.6)	0.14
No	720 (99.2)	1,336 (99.3)	798 (99.3)	982 (98.4)	
Cerebrovascular disease, n (%)					
Yes	32 (4.4)	62 (4.6)	47 (5.8)	56 (5.6)	0.41
No	694 (95.6)	1,284 (95.4)	757 (94.2)	942 (94.4)	
Family history of premature CAD, n (%)					
Yes	64 (8.8)	68 (5.1)	39 (4.9)	41 (4.1)	<0.001
No	662 (91.2)	1,278 (94.9)	765 (95.1)	957 (95.9)	
Peripheral arterial disease, n (%)					
Yes	3 (0.4)	7 (0.5)	11 (1.4)	12 (1.2)	0.06
No	723 (99.6)	1,339 (99.5)	793 (98.6)	986 (98.8)	
Prior MI, n (%)					
Yes	45 (6.2)	108 (8.0)	73 (9.1)	80 (8.0)	0.21
No	681 (93.8)	1,238 (92.0)	731 (90.9)	918 (92.0)	
Known CAD, n (%)					
Yes	41 (5.6)	68 (5.1)	49 (6.1)	45 (4.5)	0.46
No	685 (94.4)	1,278 (94.9)	755 (93.9)	953 (95.5)	
Prior heart failure, n (%)					
Yes	25 (3.4)	60 (4.5)	40 (5.0)	114 (11.4)	<0.001
No	701 (96.6)	1,286 (95.5)	764 (95.0)	884 (88.6)	
Prior PCI, n (%)					
Yes	40 (5.5)	61 (4.5)	50 (6.2)	45 (4.5)	0.27
No	686 (94.5)	1,285 (95.5)	754 (93.8)	953 (95.5)	
Prior CABG, n (%)					
Yes	2 (0.3)	5 (0.4)	1 (0.1)	3 (0.3)	0.78
No	724 (99.7)	1,341 (99.6)	803 (99.9)	995 (99.7)	
Cardiogenic shock at start of PCI, n (%)					
Yes	130 (17.9)	316 (23.5)	224 (27.9)	286 (28.7)	<0.001
No	596 (82.1)	1,030 (76.5)	580 (72.1)	712 (71.3)	
Procedure complications, n (%)					
Yes	47 (6.5)	100 (7.4)	76 (9.5)	85 (8.5)	0.13
No	679 (93.5)	1,246 (92.6)	728 (90.5)	913 (91.5)	
Clinical relevant major bleeding, n (%)					
Yes	8 (1.1)	14 (1.0)	18 (2.2)	18 (1.8)	0.10
No	718 (98.9)	1,332 (99.0)	786 (97.8)	980 (98.2)	
Death status, n (%)					
Death	35 (4.8)	99 (7.4)	72 (9.0)	96 (9.6)	0.001
Alive	691 (95.2)	1,247 (92.6)	732 (91.0)	902 (90.4)	

**Table S5** Baseline characteristics of participants with time of patients delay

Characteristics	Time of patients delay (minute)				P
	≤45 (n=971)	≤120 (n=1,150)	≤240 (n=765)	>240 (n=988)	
Age, year, mean (SD)	61.8 (13.2)	62.5 (13.0)	63.2 (13.0)	63.5 (12.9)	0.02
Gender, n (%)					
Female	726 (74.8)	878 (76.3)	564 (73.7)	693 (70.1)	0.01
Male	245 (25.2)	272 (23.7)	201 (26.3)	295 (29.9)	
Refer case, n (%)					
Yes	743 (76.5)	875 (76.1)	557 (72.8)	696 (70.4)	0.01
No	228 (23.5)	275 (23.9)	208 (27.2)	292 (29.6)	
BMI, kg/m <sup>2</sup> , mean (SD)	24.3 (4.1)	24.0 (4.2)	24.0 (4.0)	23.9 (4.3)	0.26
Diabetes mellitus, n (%)					
Yes	463 (47.7)	509 (44.3)	360 (47.1)	433 (43.8)	0.22
No	508 (52.3)	641 (55.7)	405 (52.9)	555 (56.2)	
Hypertension, n (%)					
Yes	503 (51.8)	590 (51.3)	390 (51.0)	505 (51.1)	0.99
No	468 (48.2)	560 (48.7)	375 (49.0)	483 (48.9)	
Dyslipidemia, n (%)					
Yes	463 (47.7)	537 (46.7)	371 (48.5)	470 (47.6)	0.89
No	508 (52.3)	613 (53.3)	394 (51.5)	518 (52.4)	
LDL group, n (%)					
>180	44 (11.2)	60 (12.2)	36 (11.1)	60 (15.1)	0.65
55–180	336 (85.5)	419 (85.2)	278 (85.8)	327 (82.4)	
<55	13 (3.3)	13 (2.6)	10 (3.1)	10 (2.5)	
Smoking status, n (%)					
Current smoker	421 (43.4)	572 (49.7)	318 (41.6)	427 (43.2)	<0.001
Ex-smoker	180 (18.5)	216 (18.8)	157 (20.5)	170 (17.2)	
Never	370 (38.1)	362 (31.5)	290 (37.9)	391 (39.6)	
CKD, n (%)					
Yes	326 (33.6)	346 (30.1)	214 (28.0)	298 (30.2)	0.08
No	645 (66.4)	804 (69.9)	551 (72.0)	690 (69.8)	
On dialysis, n (%)					
Yes	18 (1.9)	6 (0.5)	2 (0.3)	12 (1.2)	0.002
No	953 (98.1)	1,144 (99.5)	763 (99.7)	976 (98.8)	
Cerebrovascular disease, n (%)					
Yes	42 (4.3)	52 (4.5)	38 (5.0)	65 (6.6)	0.09
No	929 (95.7)	1,098 (95.5)	727 (95.0)	923 (93.4)	
Family history of premature CAD, n (%)					
Yes	60 (6.2)	60 (5.2)	46 (6.0)	46 (4.7)	0.43
No	911 (93.8)	1,090 (94.8)	719 (94.0)	942 (95.3)	
Peripheral arterial disease, n (%)					
Yes	10 (1.0)	9 (0.8)	4 (0.5)	10 (1.0)	0.63
No	961 (99.0)	1,141 (99.2)	761 (99.5)	978 (99.0)	
Prior MI, n (%)					
Yes	74 (7.6)	99 (8.6)	59 (7.7)	74 (7.5)	0.76
No	897 (92.4)	1,051 (91.4)	706 (92.3)	914 (92.5)	
Known CAD, n (%)					
Yes	57 (5.9)	63 (5.5)	40 (5.2)	43 (4.4)	0.48
No	914 (94.1)	1,087 (94.5)	725 (94.8)	945 (95.6)	
Prior heart failure, n (%)					
Yes	77 (7.9)	60 (5.2)	33 (4.3)	69 (7.0)	0.01
No	894 (92.1)	1,090 (94.8)	732 (95.7)	919 (93.0)	
Prior PCI, n (%)					
Yes	52 (5.4)	71 (6.2)	37 (4.8)	36 (3.6)	0.06
No	919 (94.6)	1,079 (93.8)	728 (95.2)	952 (96.4)	
Prior CABG, n (%)					
Yes	3 (0.3)	2 (0.2)	3 (0.4)	3 (0.3)	0.84
No	968 (99.7)	1,148 (99.8)	762 (99.6)	985 (99.7)	
Cardiogenic shock at start of PCI, n (%)					
Yes	291 (30.0)	281 (24.4)	167 (21.8)	217 (22.0)	<0.001
No	680 (70.0)	869 (75.6)	598 (78.2)	771 (78.0)	
Procedure complications, n (%)					
Yes	68 (7.0)	90 (7.8)	72 (9.4)	78 (7.9)	0.33
No	903 (93.0)	1,060 (92.2)	693 (90.6)	910 (92.1)	
Clinical relevant major bleeding, n (%)					
Yes	17 (1.8)	16 (1.4)	9 (1.2)	16 (1.6)	0.77
No	954 (98.2)	1,134 (98.6)	756 (98.8)	972 (98.4)	
Death status, n (%)					
Death	105 (10.8)	72 (6.3)	51 (6.7)	74 (7.5)	<0.001
Alive	866 (89.2)	1,078 (93.7)	714 (93.3)	914 (92.5)	

**Table S6** Baseline characteristics of participants with time of treatment delay

Characteristics	Time of treatment delay (minute)				P
	≤210 (n=991)	≤360 (n=1,173)	≤600 (n=824)	>600 (n=886)	
Age, year, mean (SD)	59.9 (12.7)	63.1 (13.3)	64.1 (12.7)	64.1 (13.0)	<0.001
Gender, n (%)					
Female	790 (79.7)	870 (74.2)	581 (70.5)	620 (70.0)	<0.001
Male	201 (20.3)	303 (25.8)	243 (29.5)	266 (30.0)	
Refer case, n (%)					
Yes	581 (58.6)	922 (78.6)	669 (81.2)	699 (78.9)	<0.001
No	410 (41.4)	251 (21.4)	155 (18.8)	187 (21.1)	
BMI, kg/m <sup>2</sup> , mean (SD)	24.6 (4.0)	24.1 (4.2)	23.6 (4.3)	23.8 (4.1)	<0.001
Diabetes mellitus, n (%)					
Yes	443 (44.7)	540 (46.0)	380 (46.1)	402 (45.4)	0.92
No	548 (55.3)	633 (54.0)	444 (53.9)	484 (54.6)	
Hypertension, n (%)					
Yes	514 (51.9)	616 (52.5)	396 (48.1)	462 (52.1)	0.21
No	477 (48.1)	557 (47.5)	428 (51.9)	424 (47.9)	
Dyslipidemia, n (%)					
Yes	507 (51.2)	553 (47.1)	364 (44.2)	417 (47.1)	0.03
No	484 (48.8)	620 (52.9)	460 (55.8)	469 (52.9)	
LDL group, n (%)					
>180	53 (13.2)	54 (11.5)	39 (11.7)	54 (13.5)	0.60
55–180	340 (84.6)	399 (84.9)	288 (86.5)	333 (83.0)	
<55	9 (2.2)	17 (3.6)	6 (1.8)	14 (3.5)	
Smoking status, n (%)					
Current smoker	474 (47.8)	516 (44.0)	379 (46.0)	369 (41.6)	0.03
Ex-smoker	185 (18.7)	237 (20.2)	144 (17.5)	157 (17.7)	
Never	332 (33.5)	420 (35.8)	301 (36.5)	360 (40.6)	
CKD, n (%)					
Yes	269 (27.1)	345 (29.4)	265 (32.2)	305 (34.4)	0.004
No	722 (72.9)	828 (70.6)	559 (67.8)	581 (65.6)	
On dialysis, n (%)					
Yes	8 (0.8)	7 (0.6)	10 (1.2)	13 (1.5)	0.19
No	983 (99.2)	1,166 (99.4)	814 (98.8)	873 (98.5)	
Cerebrovascular disease, n (%)					
Yes	46 (4.6)	51 (4.3)	50 (6.1)	50 (5.6)	0.27
No	945 (95.4)	1,122 (95.7)	774 (93.9)	836 (94.4)	
Family history of premature CAD, n (%)					
Yes	70 (7.1)	73 (6.2)	31 (3.8)	38 (4.3)	0.004
No	921 (92.9)	1,100 (93.8)	793 (96.2)	848 (95.7)	
Peripheral arterial disease, n (%)					
Yes	4 (0.4)	10 (0.9)	10 (1.2)	9 (1.0)	0.27
No	987 (99.6)	1,163 (99.1)	814 (98.8)	877 (99.0)	
Prior MI, n (%)					
Yes	77 (7.8)	95 (8.1)	59 (7.2)	75 (8.5)	0.78
No	914 (92.2)	1,078 (91.9)	765 (92.8)	811 (91.5)	
Known CAD, n (%)					
Yes	61 (6.2)	62 (5.3)	38 (4.6)	42 (4.7)	0.43
No	930 (93.8)	1,111 (94.7)	786 (95.4)	844 (95.3)	
Prior heart failure, n (%)					
Yes	47 (4.7)	46 (3.9)	52 (6.3)	94 (10.6)	<0.001
No	944 (95.3)	1,127 (96.1)	772 (93.7)	792 (89.4)	
Prior PCI, n (%)					
Yes	55 (5.5)	70 (6.0)	35 (4.2)	36 (4.1)	0.14
No	936 (94.5)	1,103 (94.0)	789 (95.8)	850 (95.9)	
Prior CABG, n (%)					
Yes	2 (0.2)	4 (0.3)	2 (0.2)	3 (0.3)	0.92
No	989 (99.8)	1,169 (99.7)	822 (99.8)	883 (99.7)	
Cardiogenic shock at start of PCI, n (%)					
Yes	225 (22.7)	303 (25.8)	241 (29.2)	187 (21.1)	<0.001
No	766 (77.3)	870 (74.2)	583 (70.8)	699 (78.9)	
Procedure complications, n (%)					
Yes	64 (6.5)	100 (8.5)	78 (9.5)	66 (7.4)	0.09
No	927 (93.5)	1,073 (91.5)	746 (90.5)	820 (92.6)	
Clinical relevant major bleeding, n (%)					
Yes	12 (1.2)	16 (1.4)	13 (1.6)	17 (1.9)	0.62
No	979 (98.8)	1,157 (98.6)	811 (98.4)	869 (98.1)	
Death status, n (%)					
Death	73 (7.4)	82 (7.0)	80 (9.7)	67 (7.6)	0.13
Alive	918 (92.6)	1,091 (93.0)	744 (90.3)	819 (92.4)	



**Figure S3** Probability of death by time of system delay.