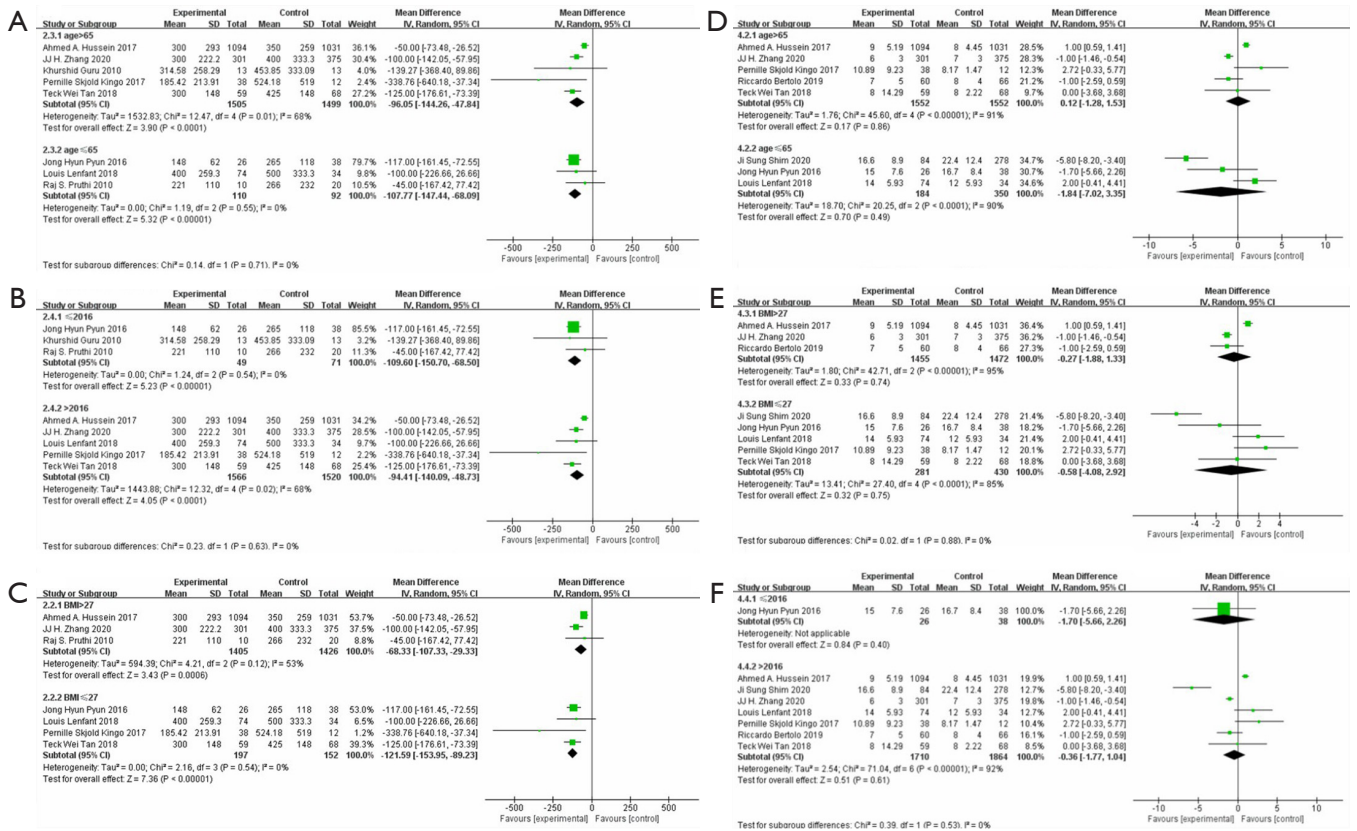
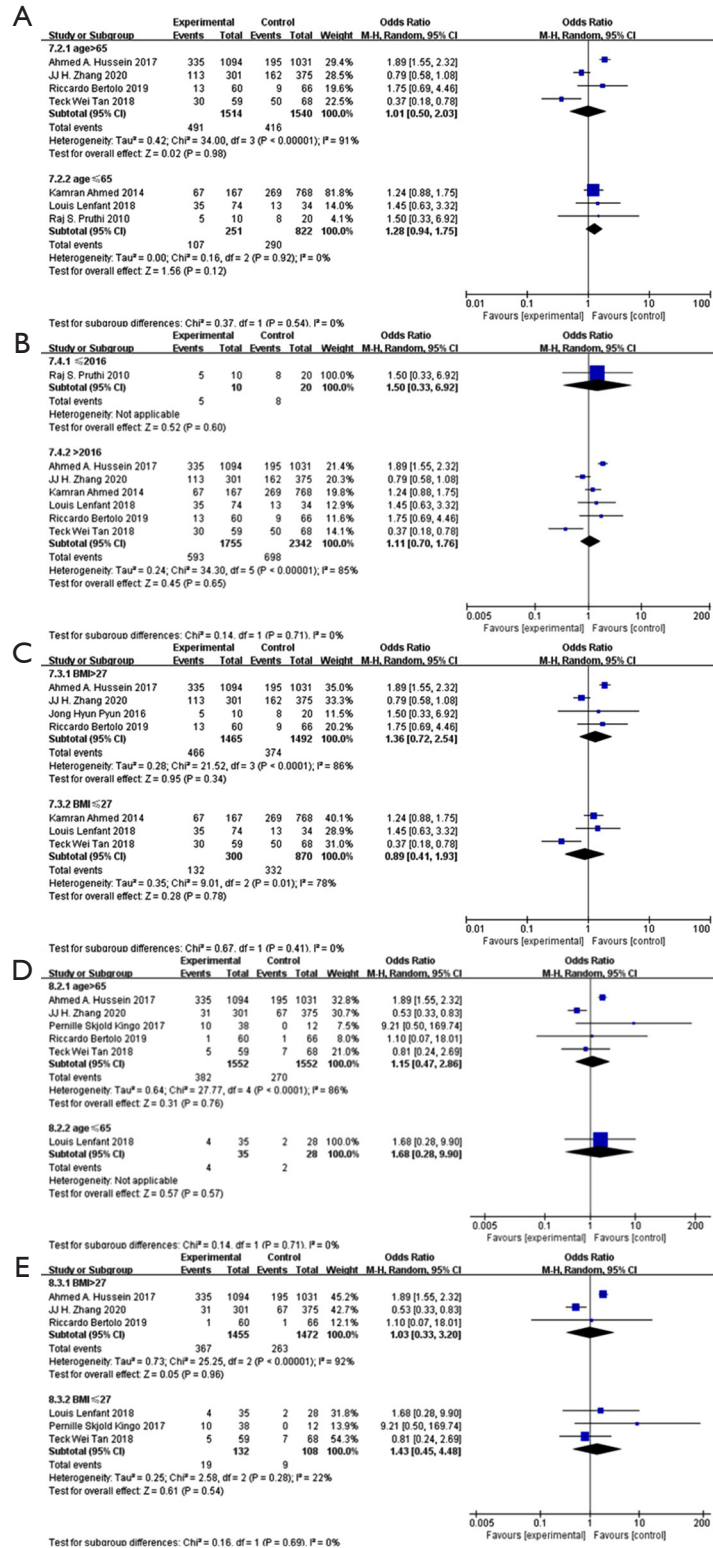


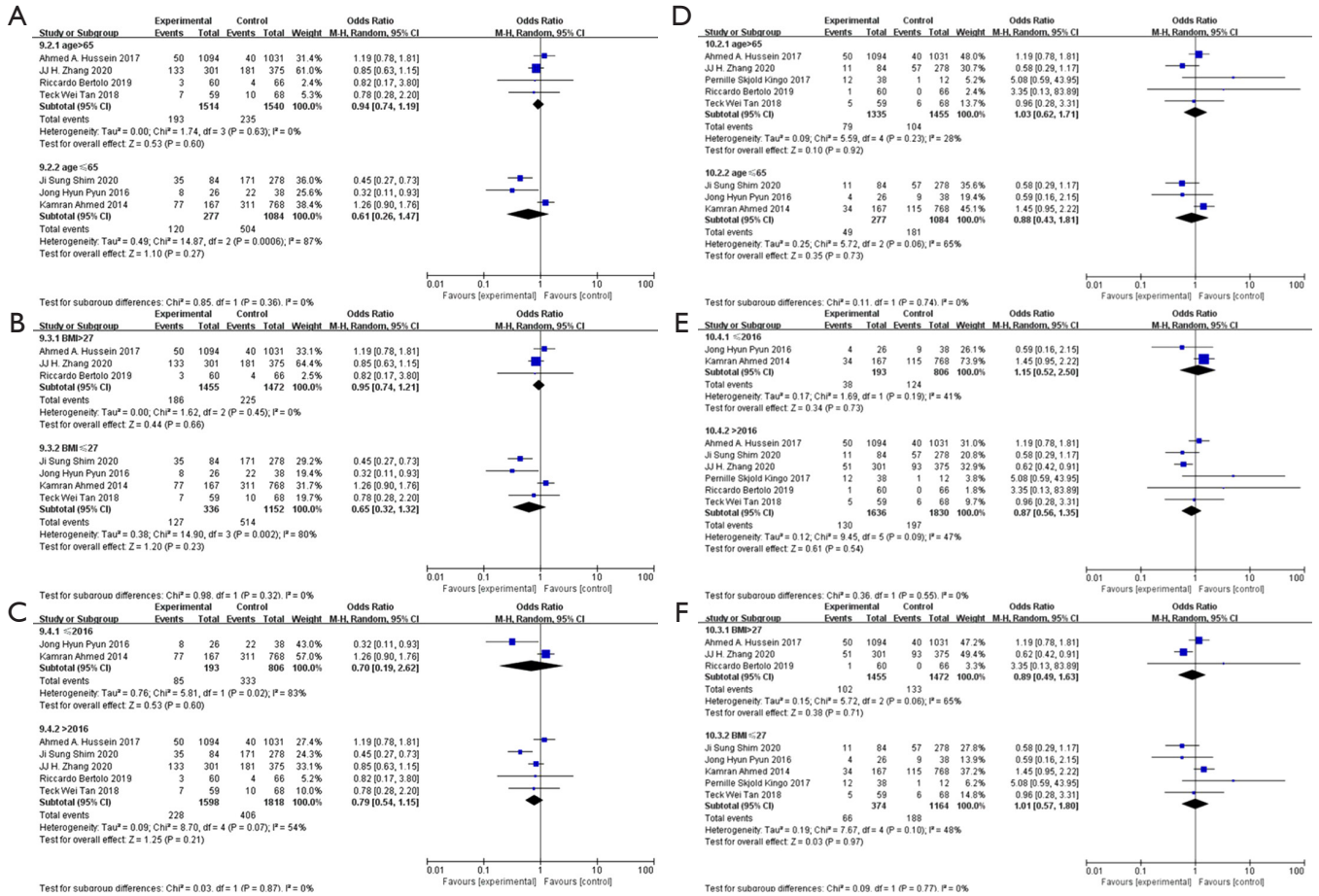
Supplementary



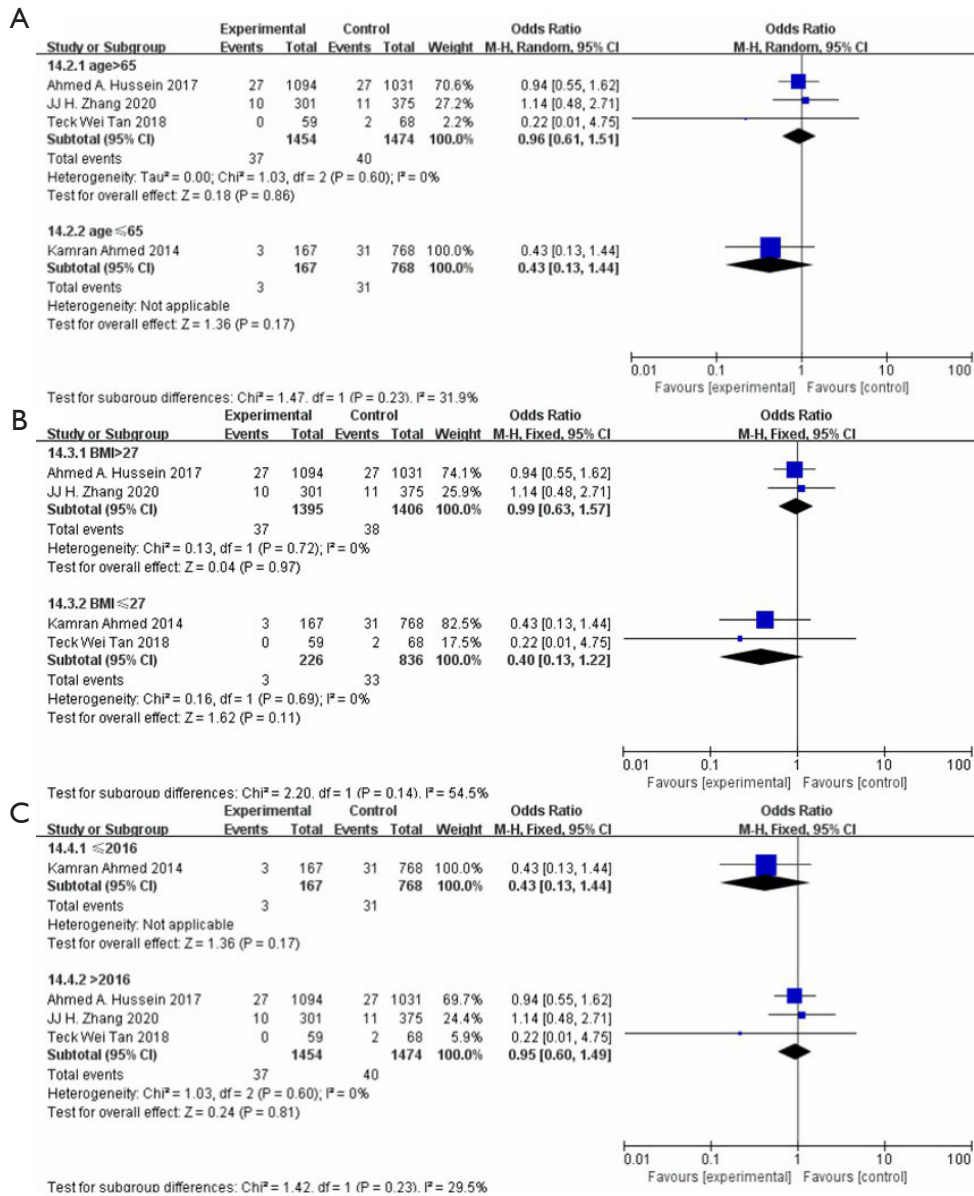
**Figure S1** Subgroup analysis for surgery safety and postoperative recovery. (A) EBL of patients in age >65 or age ≤65; (B) EBL of patients in BMI >27 or BMI ≤27; (C) EBL of patients in publication of study >2016 or ≤2016; (D) hospital stay of patients in age >65 or age ≤65; (E) hospital stay of patients in BMI >27 or BMI ≤27; (F) hospital stay of patients in publication of study >2016 or ≤2016.



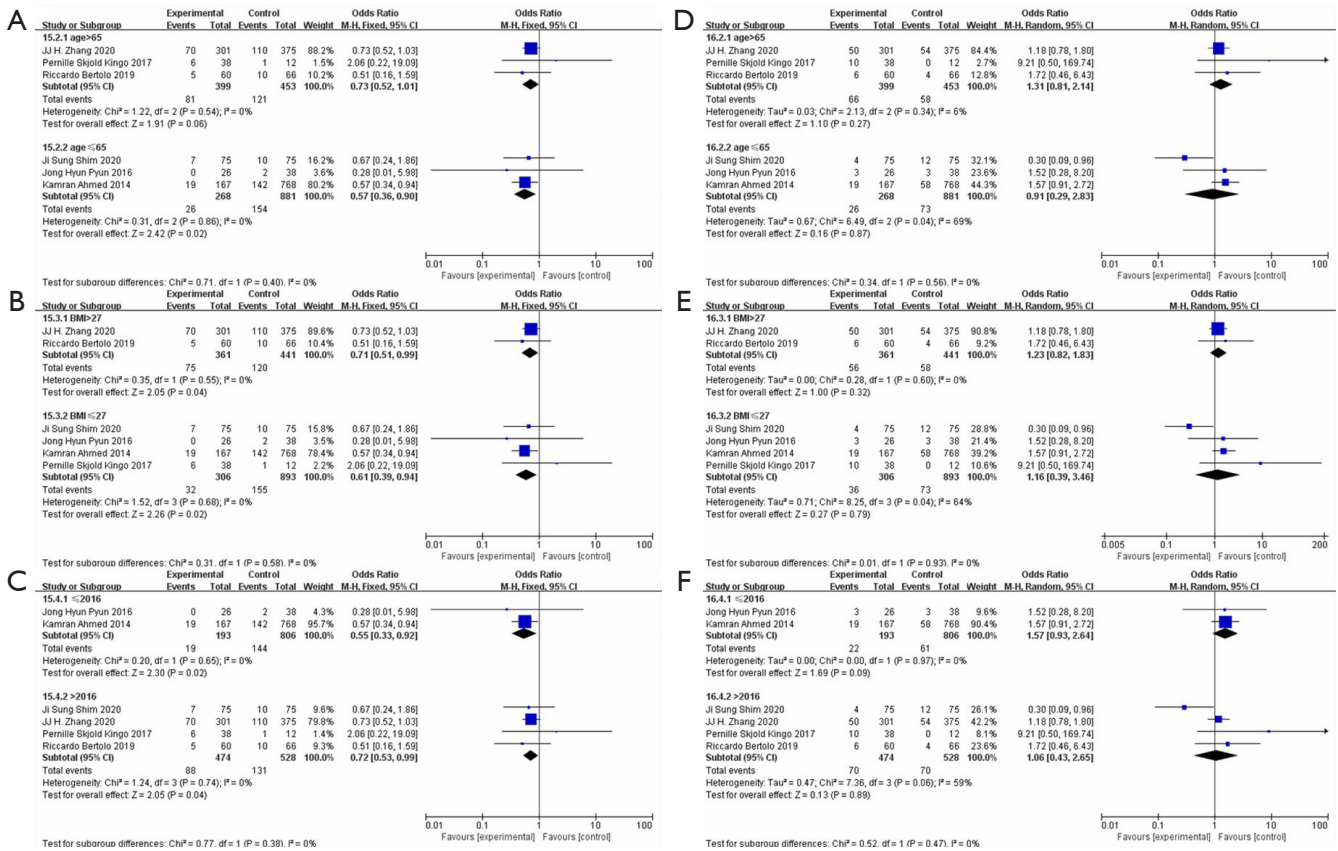
**Figure S2** Subgroup analysis for complications according to Clavien-Dindo grade. (A) 30 d-complications of patients in age >65 or age ≤65; (B) 30 d-complications of patients in BMI >27 or BMI ≤27; (C) 30 d-complications of patients in publication of study >2016 or ≤2016; (D) grade ≥3 of 30 d-complications of patients in age >65 or age ≤65; (E) grade ≥3 of 30 d-complications of patients in BMI >27 or BMI ≤27; (F) grade ≥3 of 30 d-complications of patients in publication of study >2016 or ≤2016.



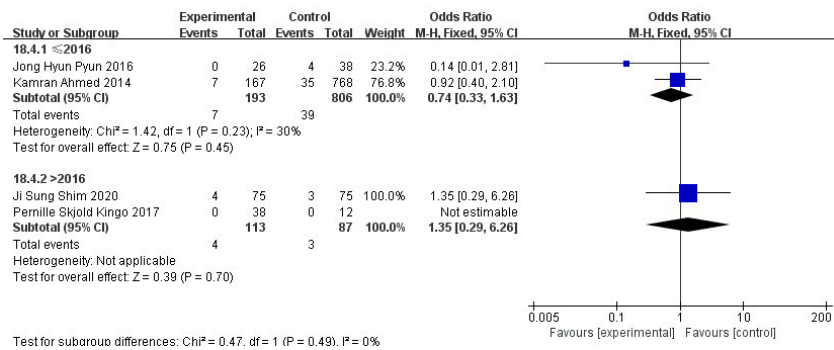
**Figure S3** Subgroup analysis for complications according to Clavien-Dindo grade. (A) 90 d-complications of patients in age >65 or age ≤65; (B) 90 d-complications of patients in BMI >27 or BMI ≤27; (C) 90 d-complications of patients in publication of study >2016 or ≤2016; (D) grade ≥3 of 90 d-complications of patients in age >65 or age ≤65; (E) grade ≥3 of 90 d-complications of patients in BMI >27 or BMI ≤27.



**Figure S4** Subgroup analysis. (A) 90 d-mortality of patients in age >65 or age ≤65; (B) 90 d-mortality of patients in BMI >27 or BMI ≤27; (C) 90 d-mortality of patients in publication of study >2016 or ≤2016.

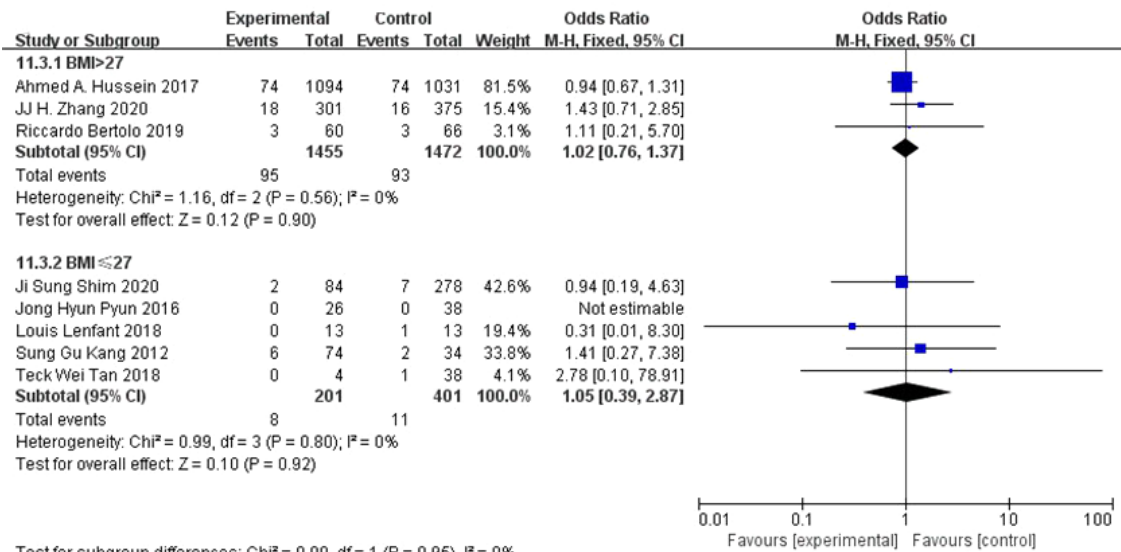


**Figure S5** Subgroup analysis for complications according to organ system. (A) gastrointestinal complications of patients in age >65 or age ≤65; (B) gastrointestinal complications of patients in BMI >27 or BMI ≤27; (C) gastrointestinal complications of patients in publication of study >2016 or ≤2016; (D) genitourinary complications of patients in age >65 or age ≤65; (E) genitourinary complications of patients in BMI >27 or BMI ≤27; (F) genitourinary complications of patients in publication of study >2016 or ≤2016.

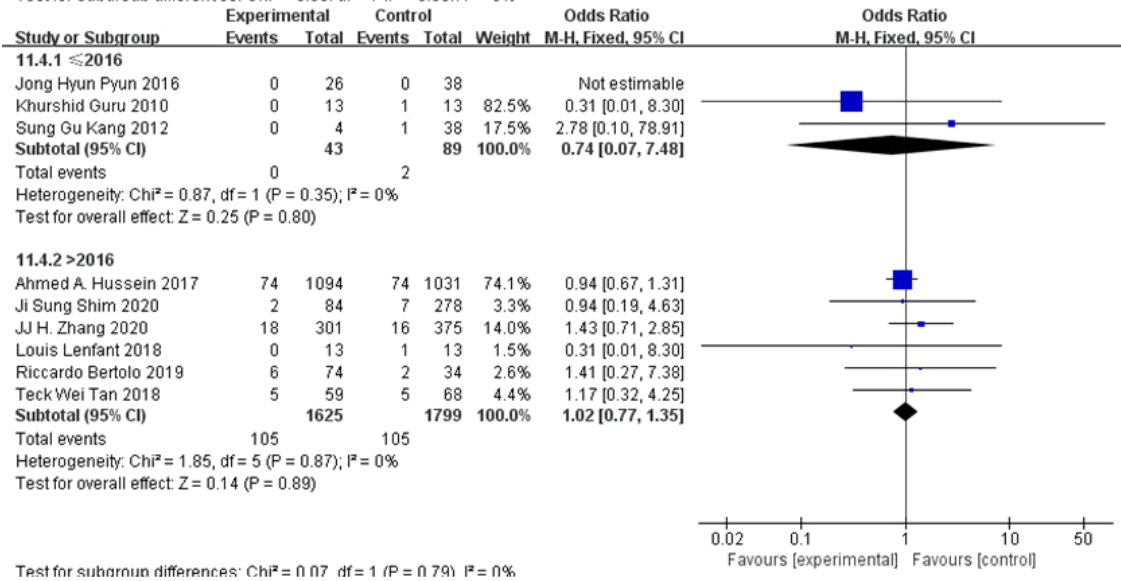


**Figure S6** Subgroup analysis for complications according to organ system: wound/skin complications of patients in publication of study >2016 or ≤2016.

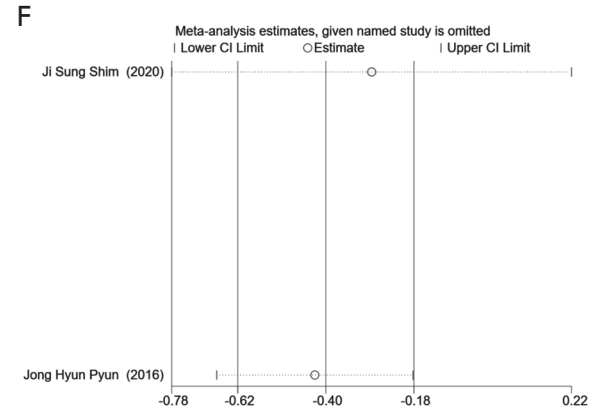
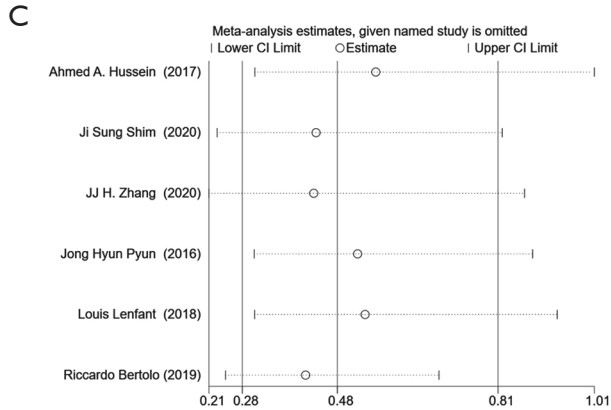
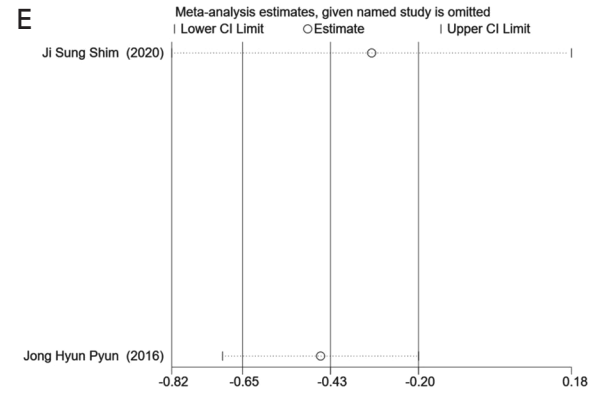
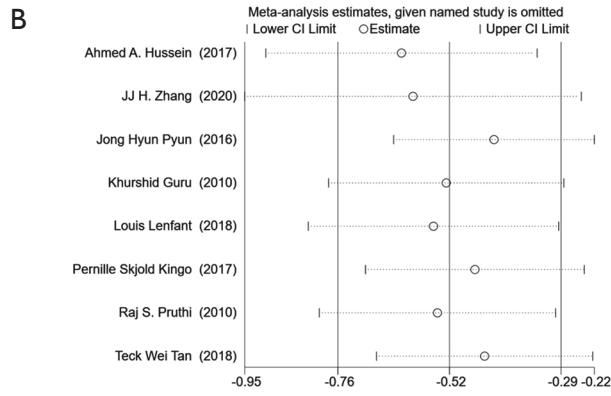
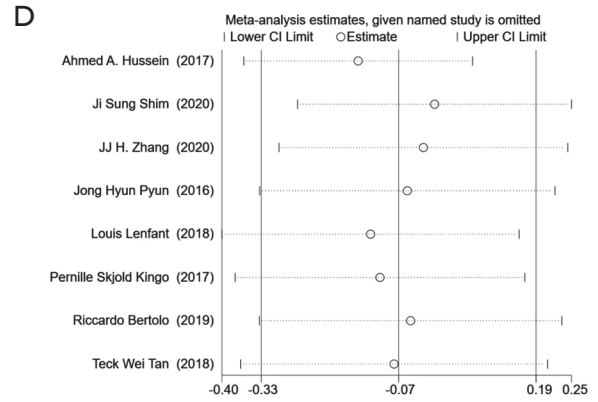
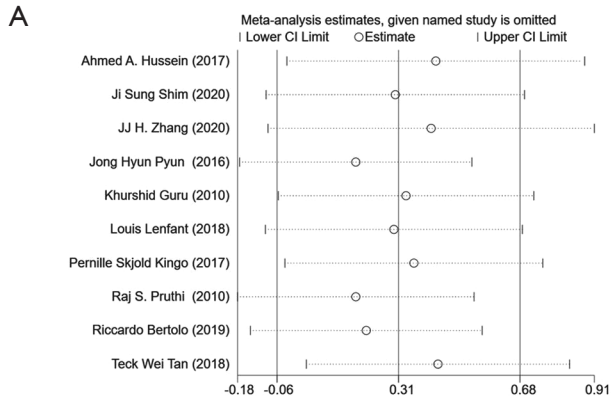
A



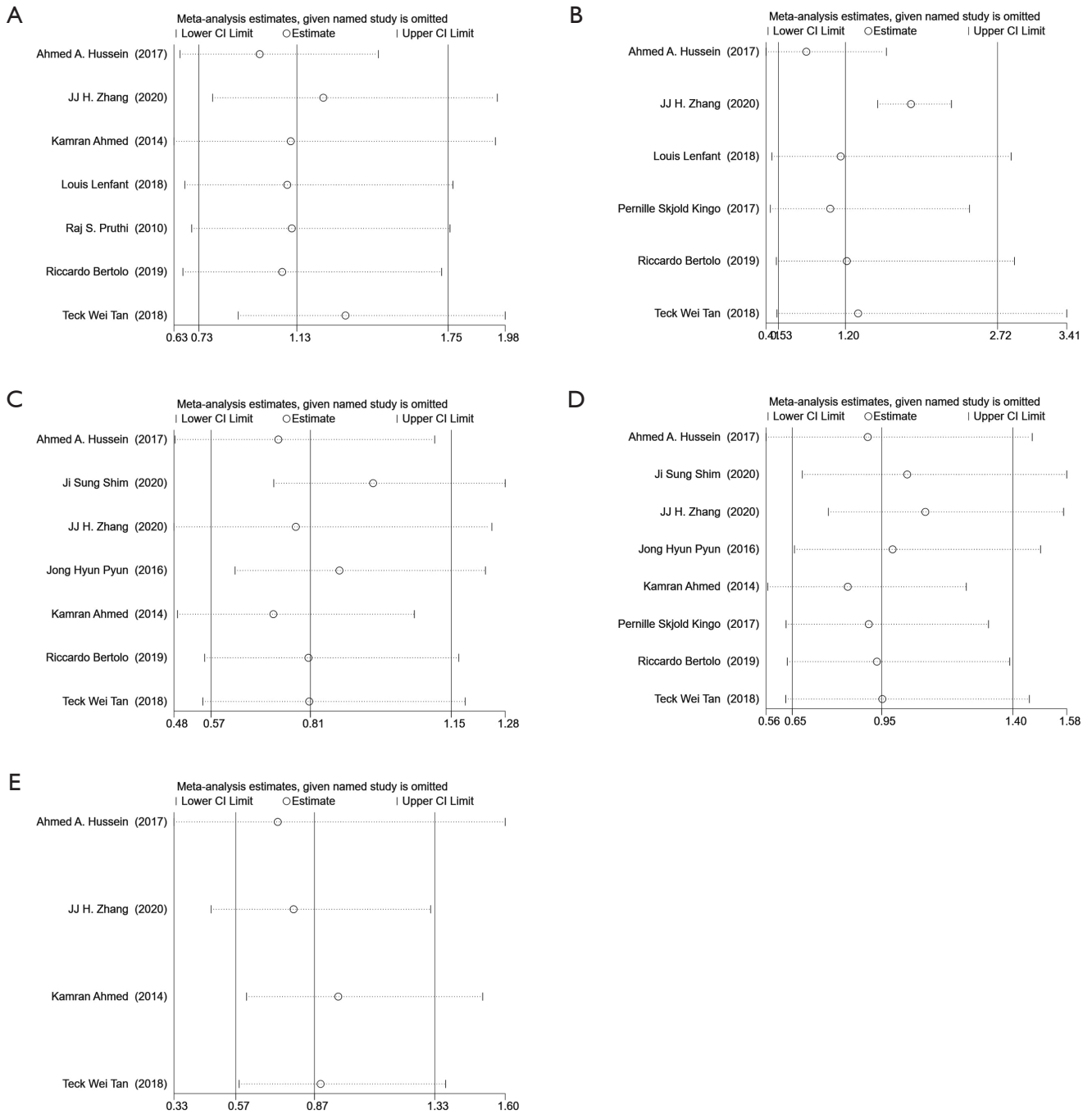
B



**Figure S7** Subgroup analysis. (A) Positive surgical margin of patients in BMI >27 or BMI ≤27; (B) positive surgical margin of patients in publication of study >2016 or ≤2016.

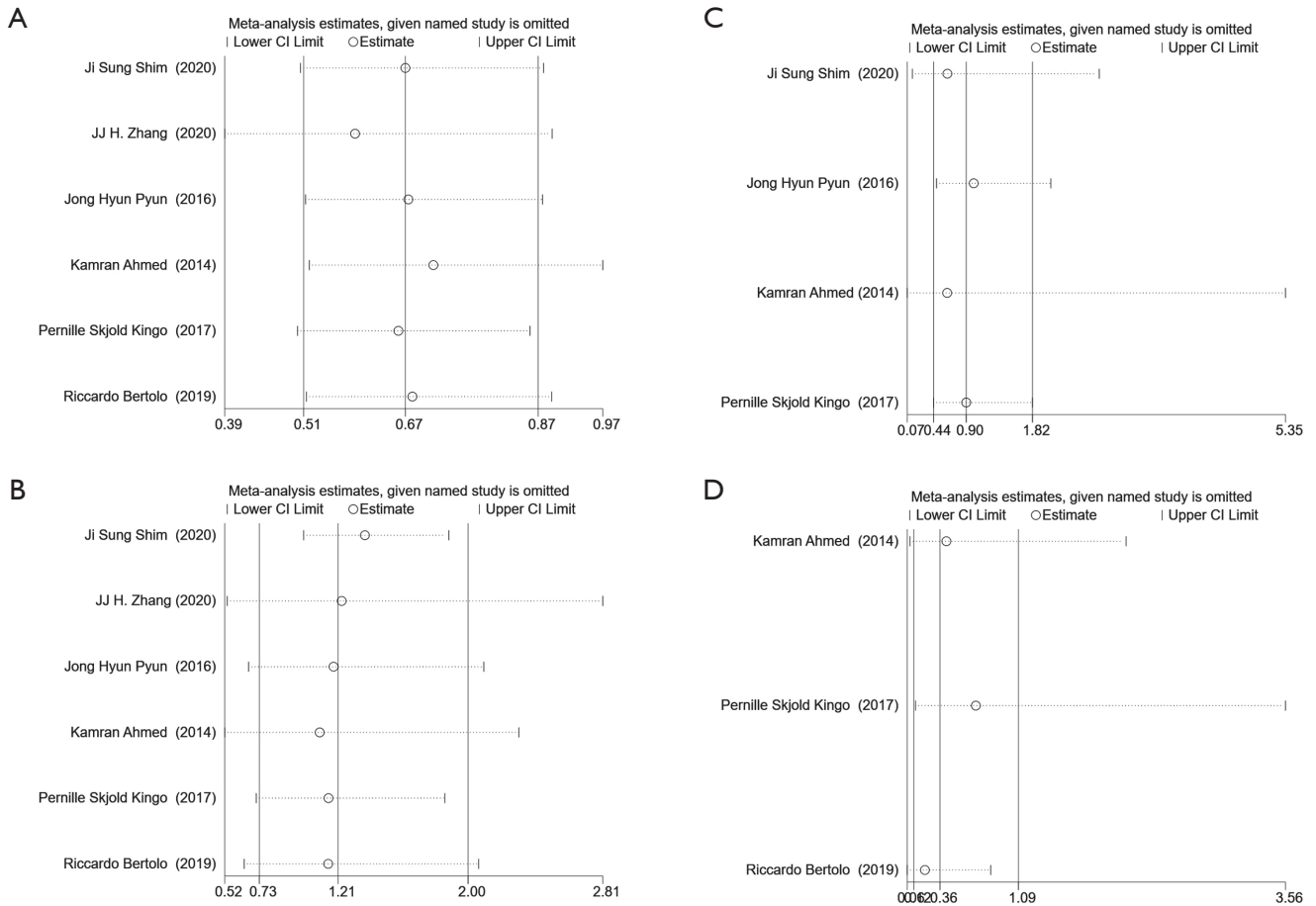


**Figure S8** Sensitivity analysis for surgery safety and postoperative recovery. (A) Operation time; (B) EBL; (C) transfusion rate; (D) hospital stay; (E) time to flatus; (F) time to oral intake.

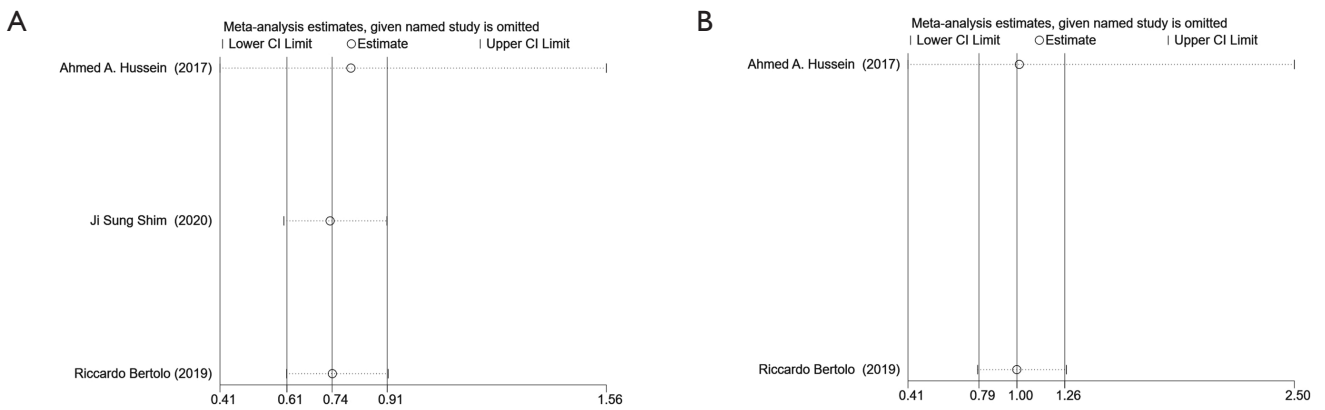


**Figure S9** Sensitivity analysis for complications according to Clavien-Dindo grade. (A) 30 d-complications; (B) grade  $\geq 3$  of 30 d-complications; (C) 90 d-complications; (D) grade  $\geq 3$  of 90 d-complications; (E) 90 d-mortality.

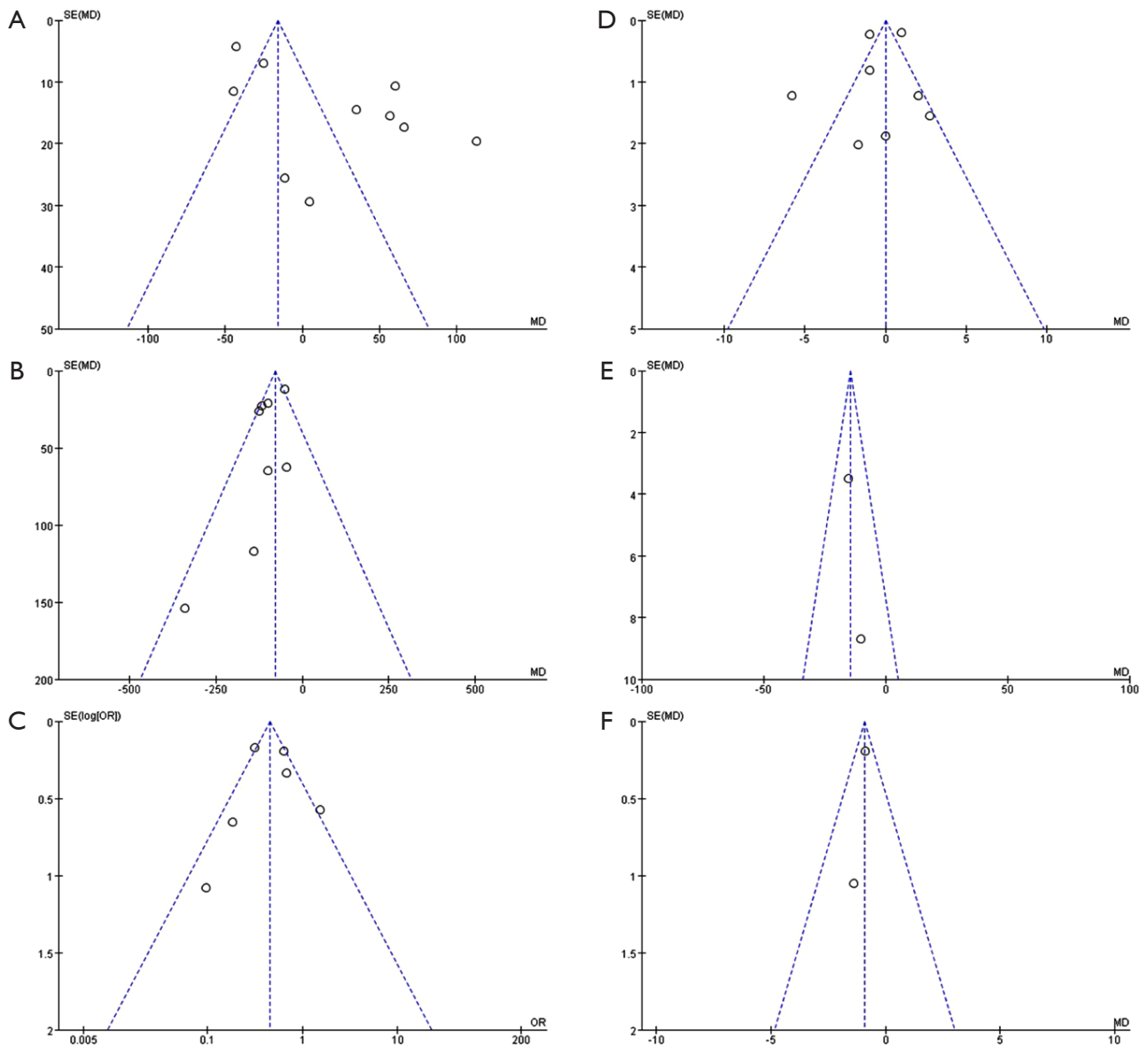




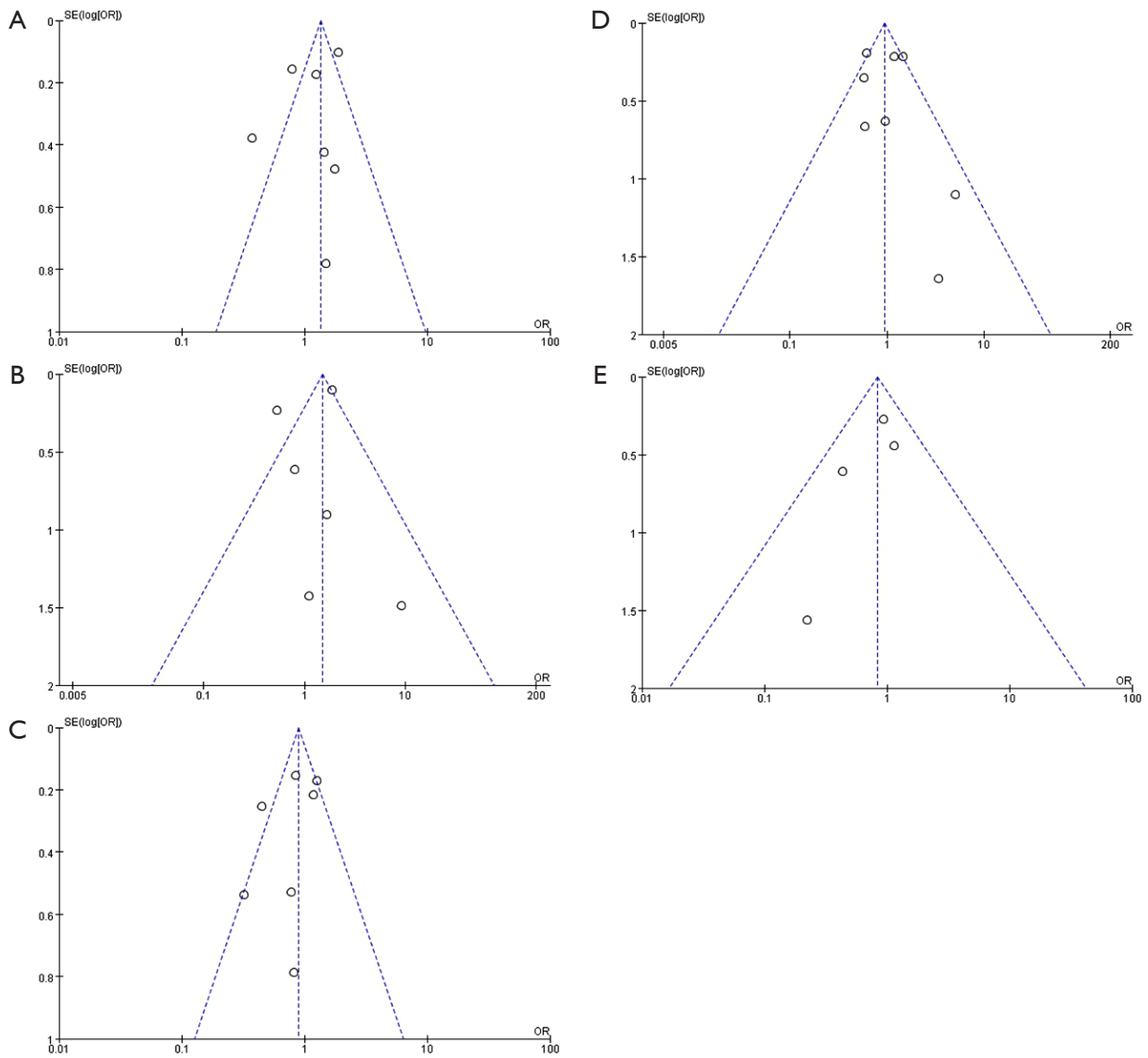
**Figure S10** Sensitivity analysis for complications according to organ system. (A) Gastrointestinal; (B) genitourinary; (C) wound/skin; (D) metabolism.



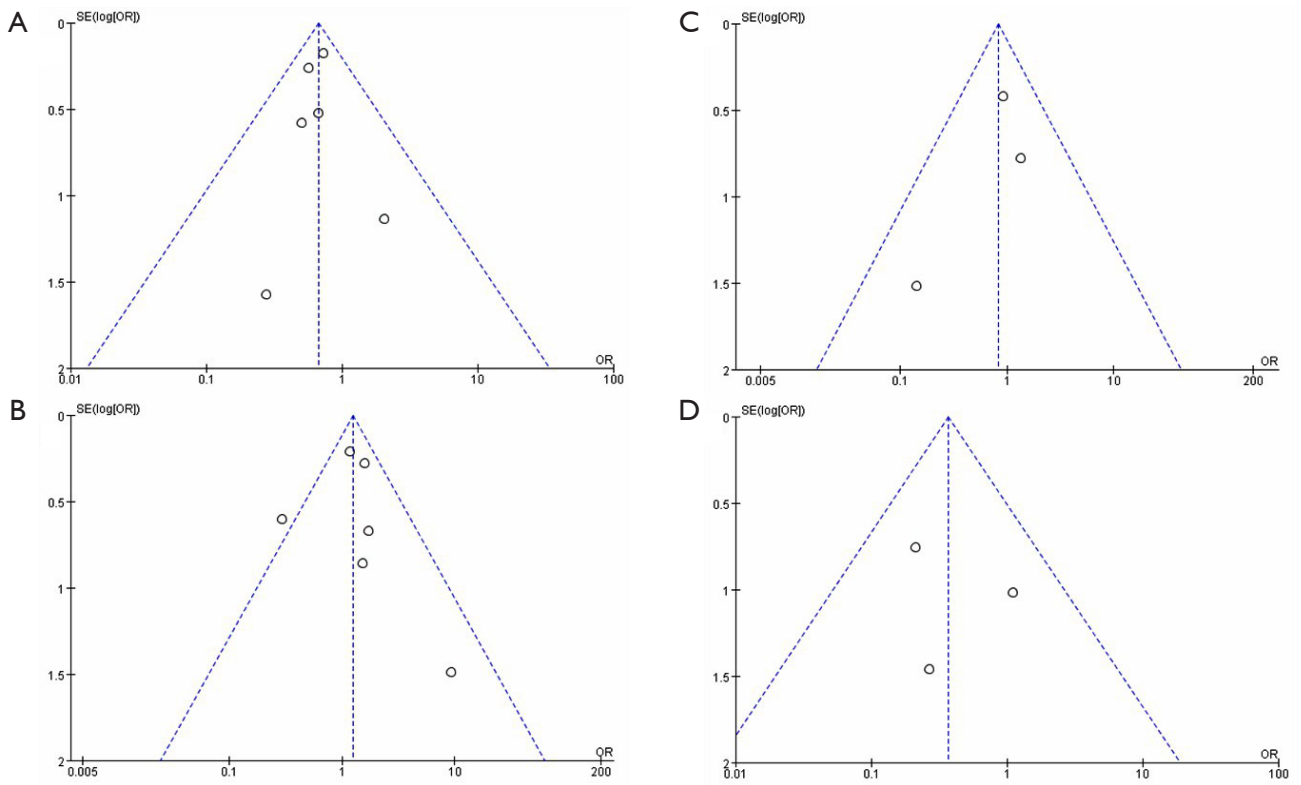
**Figure S11** Sensitivity analysis for prognosis results. (A) Recurrence; (B) mortality.



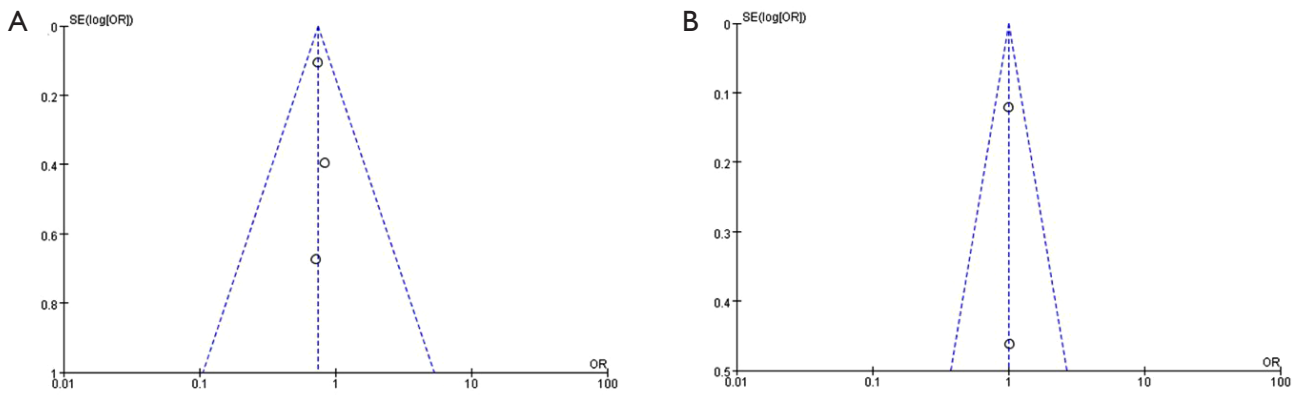
**Figure S12** Funnel plot for surgery safety and postoperative recovery. (A) Operation time; (B) EBL; (C) transfusion rate; (D) hospital stay; (E) time to flatus; (F) time to oral intake.



**Figure S13** Funnel plot for complications according to Clavien-Dindo grade. (A) 30 d-complications; (B) grade  $\geq 3$  of 30 d-complications; (C) 90 d-complications; (D) grade  $\geq 3$  of 90 d-complications; (E) 90 d-mortality.



**Figure S14** Funnel plot for complications according to organ system. (A) Gastrointestinal; (B) genitourinary; (C) wound/skin; (D) metabolism.



**Figure S15** Funnel plot for positive surgery margin and prognosis results. (A) Recurrence; (B) mortality.