

Figure S1 Kaplan-Meier curves of RFS on ND status considering ablative/adjuvant RAI. (A,B) Kaplan-Meier curves on the ND cutoff 17.4% in patients (A) without RAI, and (B) with RAI. P-values were calculated using the log-rank test.

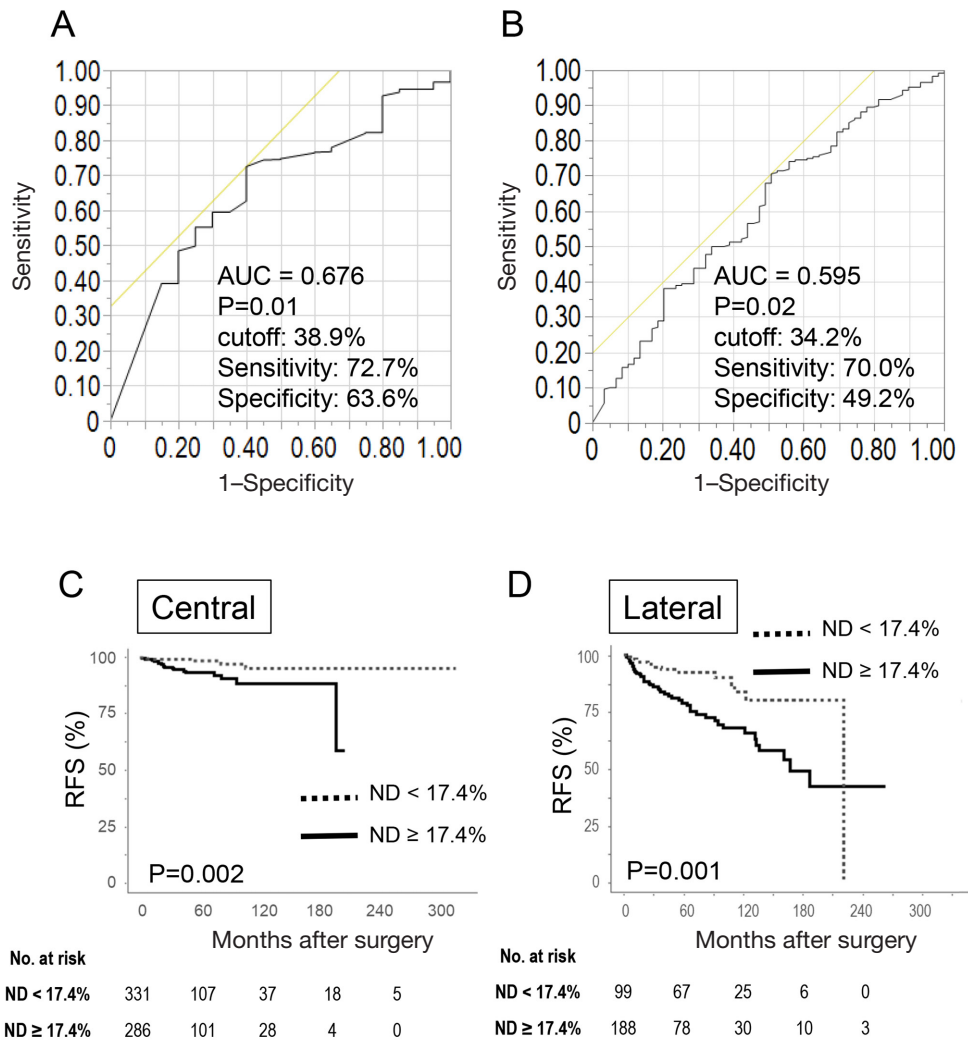


Figure S2 ROC and survival analysis of ND considering the extent of lymph node dissection. (A,B) ROC curves of ND for disease recurrence at the most recent follow-up, considering the extent of lymph node dissection. (A) patients with only central neck dissection (CND only; n=617), and (B) patients with both central and lateral neck dissection (LND; n=287). (C,D) Kaplan-Meier curves of RFS in the CND-only group (C) and the LND group (D) considering ND status using a cutoff of 17.4% that was determined across all cases. P-values were calculated using the log-rank test.