

**Table S1** The percentage of patients with different resectability across included studies

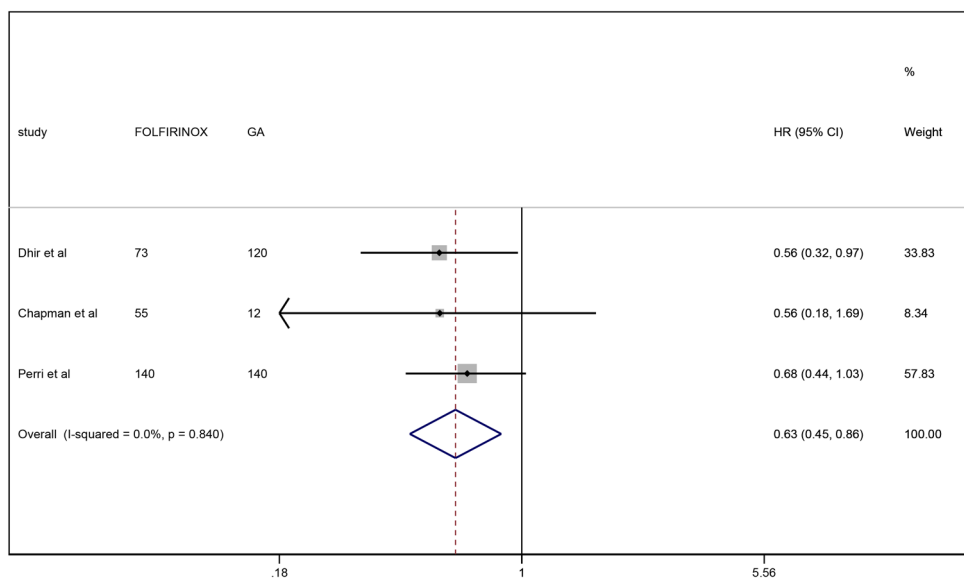
Study	FOLFIRINOX			GA		
	RPC	BRPC	LAPC or unresectable	RPC	BRPC	LAPC or unresectable
Wolfe <i>et al.</i> , 2020	0%	67.30%	32.70%	0%	67.30%	25%
Macedo <i>et al.</i> , 2019	21.90%	43.20%	30.60%	23.10%	52.70%	15.40%
Dhir <i>et al.</i> , 2018	21%	79%	0%	40.80%	59.20%	0%
Chapman <i>et al.</i> , 2018	0%	68.70%	31.30%	0%	59.50%	40.50%
Perri <i>et al.</i> , 2020	32%	31%	37%	45%	23%	32%
Weniger <i>et al.</i> , 2020	NA	NA	NA	NA	NA	NA
Gage <i>et al.</i> , 2019	NA	NA	NA	NA	NA	NA
Napolitano <i>et al.</i> , 2019	NA	NA	NA	NA	NA	NA

GA, gemcitabine and nab-paclitaxel; RPC, resectable pancreatic cancer; BRPC, borderline resectable pancreatic cancer; LAPC, locally advanced pancreatic cancer.

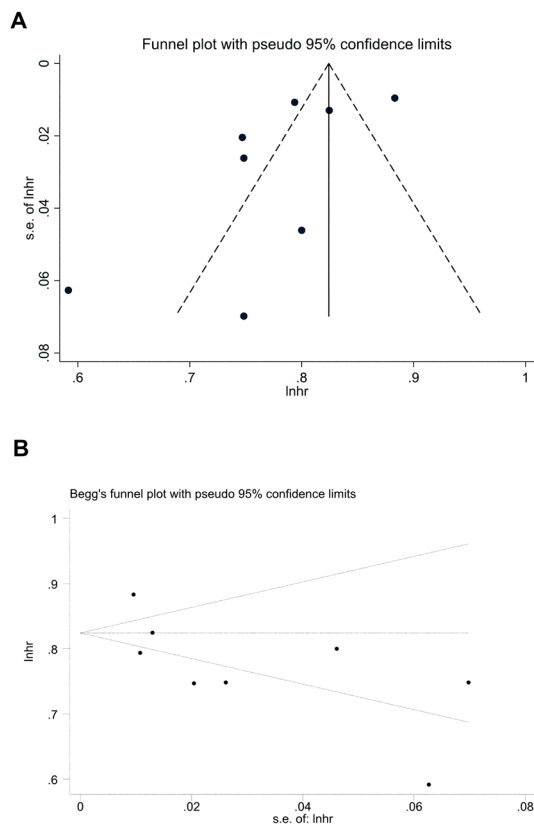
**Table S2** Compare positive lymph nodes between two groups

Study	Lymph nodes positive			
	FOLFIRINOX		GA	
	Numbers	N1 percentage	Numbers	N1 percentage
Wolfe <i>et al.</i> , 2020	1.3 (0–7)		2.9 (0–11)	
Macedo <i>et al.</i> , 2019	1 (0–2)		1 (0–3)	
Dhir <i>et al.</i> , 2018		56%		71.70%
Chapman <i>et al.</i> , 2018		49%		51%
Perri <i>et al.</i> , 2020	–	–	–	–
Weniger <i>et al.</i> , 2020		78.20%		51.20%
Gage <i>et al.</i> , 2019	–	–	–	–
Napolitano <i>et al.</i> , 2019	–	–	–	–

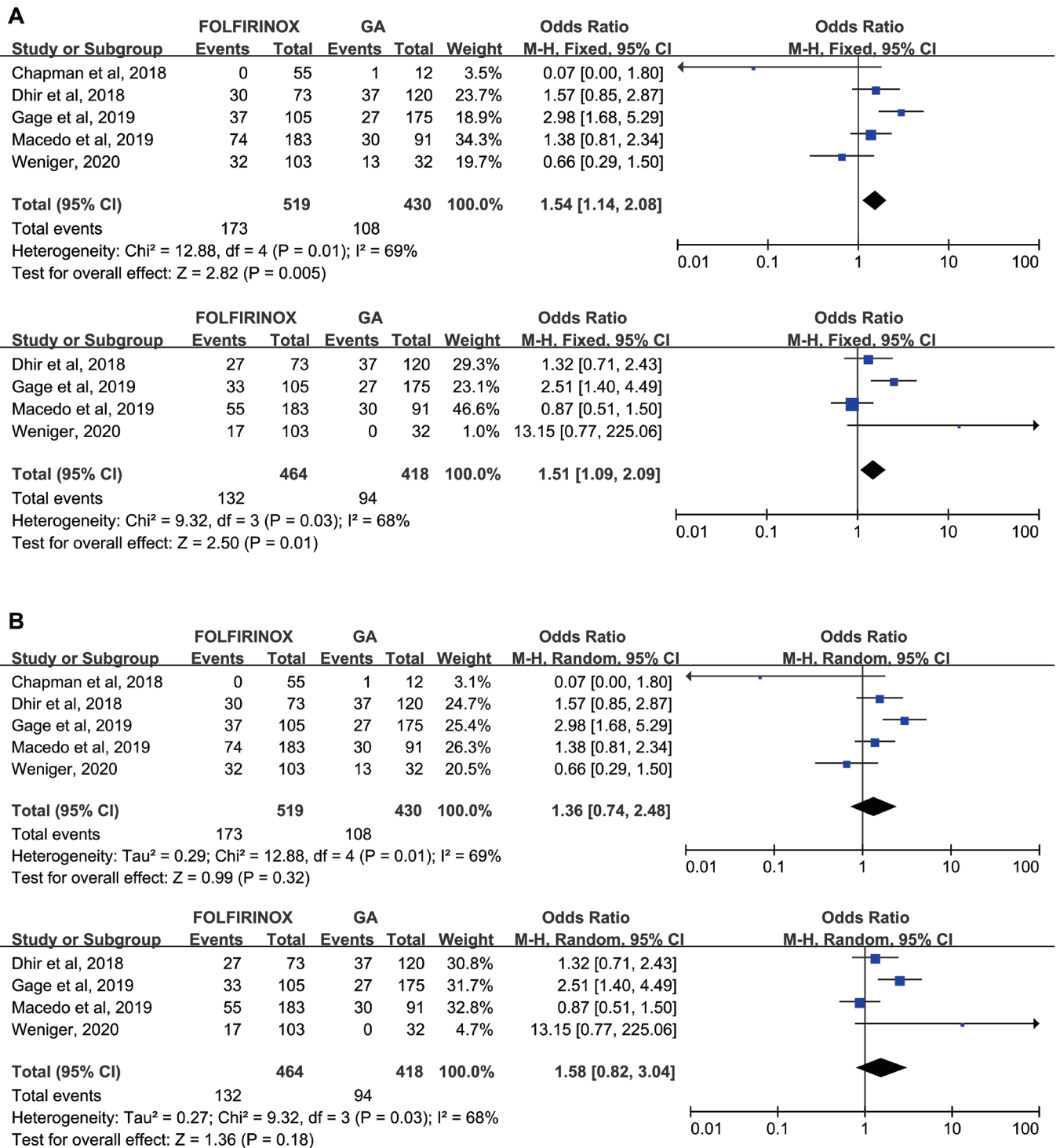
\*, means the difference is statistically significant. GA, gemcitabine and nab-paclitaxel.



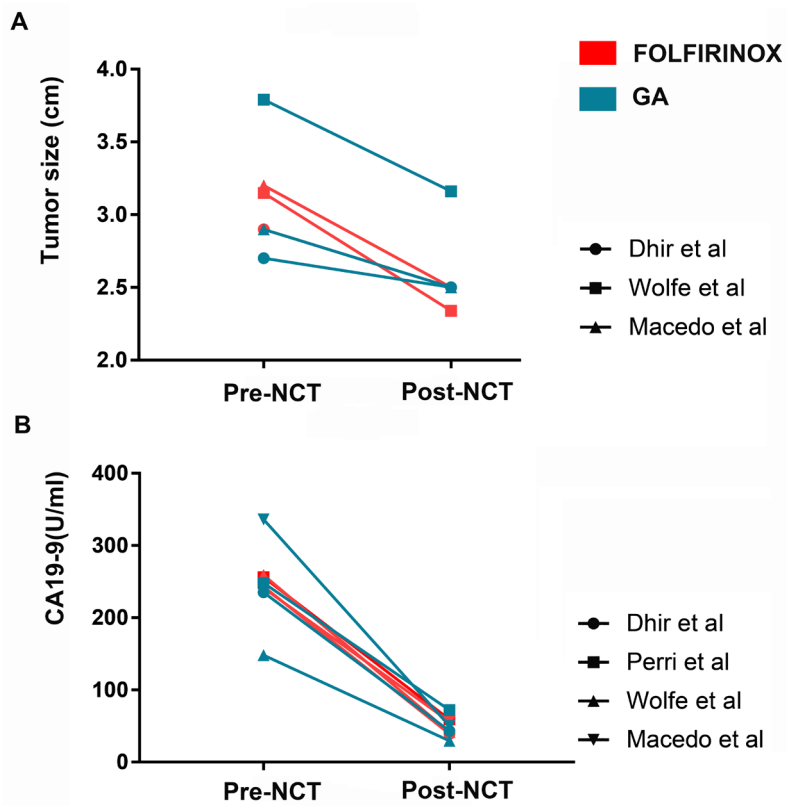
**Figure S1** Forest plot showing the confounding factor-adjusted HR for the overall survival interval of patients who received preoperative FOLFIRINOX versus GA.



**Figure S2** Publication bias detection. (A) Funnel graph. (B) Begg's test.



**Figure S3** Comparison of four- and five-year survival probability between patients who received preoperative FOLFIRINOX versus GA. (A) Fixed effect model. (B) Random effect model.



**Figure S4** Qualitative analysis presented a similar trend in the variation in (A) tumour size and (B) CA19-9 level between patients who were preoperatively treated with FOLFIRINOX versus GA.