

Table S1 PCR primers

Gene	Primer sequence
C3	Forward: 5'-CGGCCTTTGTTCTCATCTCG-3'
	Reverse: 5'-CAGAGCATAGCCAGCAATGG-3'
PF4	Forward: 5'-CAGTGCCTGTGTGTAAGAC-3'
	Reverse: 5'-CCTTCCATTCTTCAGCGTGG-3'
SAA1	Forward: 5'-CTTGCGGAGGCTTTTGATGG-3'
	Reverse: 5'-GGCATCGCTGATCACTTCTG-3'
CXCL1	Forward: 5'-GTCCGTGGCCACTGAACT-3'
	Reverse: 5'-CTATGACTTCGGTTTGGGCG-3'
CX3CL1	Forward: 5'-GAGCTTTTCCGAGTGCCTC-3'
	Reverse: 5'-GCCTTCAGACGGAGCATTCT-3'
CXCL13	Forward: 5'-CCTCTCTCCAGTCCAAGGTG-3'
	Reverse: 5'-TGAGGGTCCACACACACAAT-3'
GAL	Forward: 5'-AACCAGGAAGCTTTGACAGG-3'
	Reverse: 5'-CGCTCGATGTCTTCTGAGGA-3'
GPER1	Forward: 5'-TCACCTGGATGAGCTTCGAC-3'
	Reverse: 5'-GGACATCCGCGAAACAGAAG-3'
CXCL2	Forward: 5'-CCCCTGGCCACTGAACTG-3'
	Reverse: 5'-CTATGACTTCGGTTTGGGCG-3'
CXCL6	Forward: 5'-CTGGTCCTGTCTCTGCTGTG-3'
	Reverse: 5'-CTTGCTTCCCGTTCTTCAGG-3'
GAPDH	Forward: 5'-TGGTATCGTGAAG GACTCA-3'
	Reverse: 5'-CCAGTAGAGGCAGG GATGAT-3'

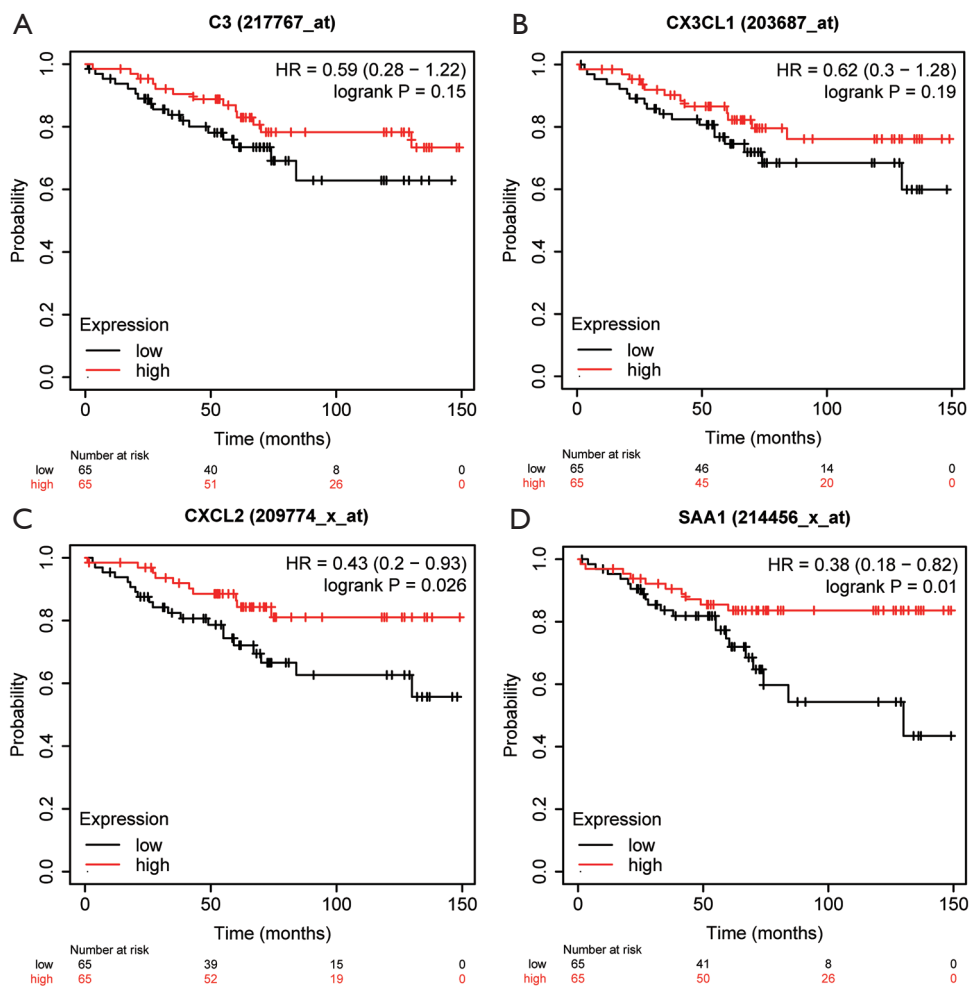


Figure S1 Validation of survival analysis of *C3*, *CX3CL1*, *CXCL2*, and *SAA1* on Kaplan-Meier Plotter website. (A-D) The overall survival value for the expression of the *C3*, *CX3CL1*, *CXCL2*, *SAA1* on the Kaplan-Meier Plotter with the condition of ER+ and only tamoxifen-treated breast cancers in the endocrine therapy.

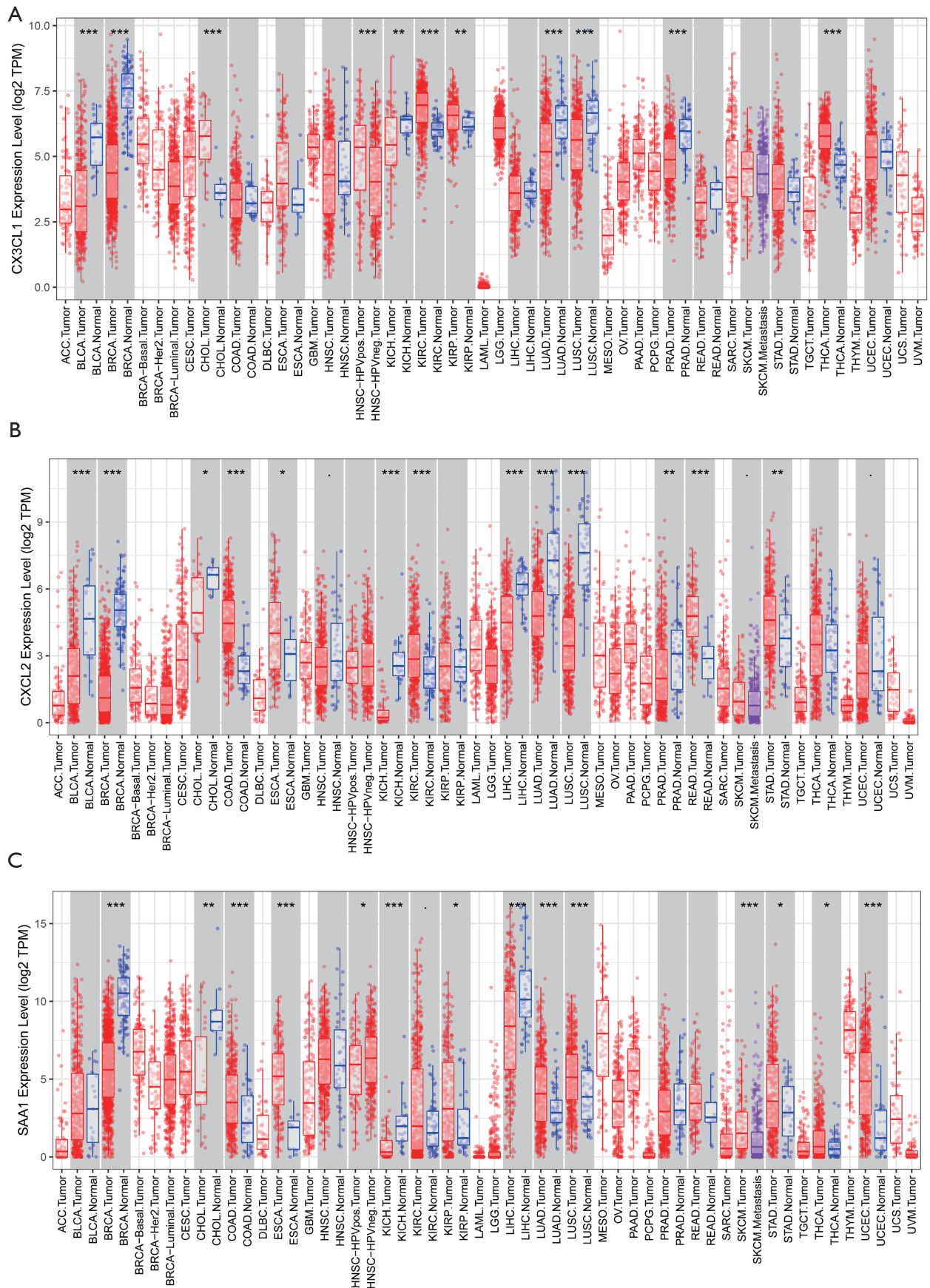


Figure S2 *CX3CL2*, *CXCL1*, and *SAA1* expression in different cancers. (A-C) *CX3CL1*, *CXCL1*, and *SAA1* expression levels in BRCA tumor tissue were lower than those in BRCA normal tissue in the TIMER database. *, $P < 0.05$; **, $P < 0.01$; ***, $P < 0.001$.