

Table S1 RCB in the ITT population, and by HR status at surgery

	ITT (n=21)		HR positive (n=8)		HR negative (n=13)	
	n	% (95% CI)	n	% (95% CI)	n	% (95% CI)
RCB 0	12	57.1 (36.0–78.3)	3	37.5 (4.0–71.1)	9	69.2 (44.1–94.3)
RCB I	5	23.8 (5.6–42.0)	2	25.0 (0–55.0)	3	23.1 (0.2–46.0)
RCB II	4	19.1 (2.3–35.8)	3	37.5 (4.0–71.1)	1	7.7 (0–22.2)
RCB III	0	0	0	0	0	0

RCB, residual cancer burden; ITT, intent-to-treat; HR, hormone receptor; CI, confidence interval.

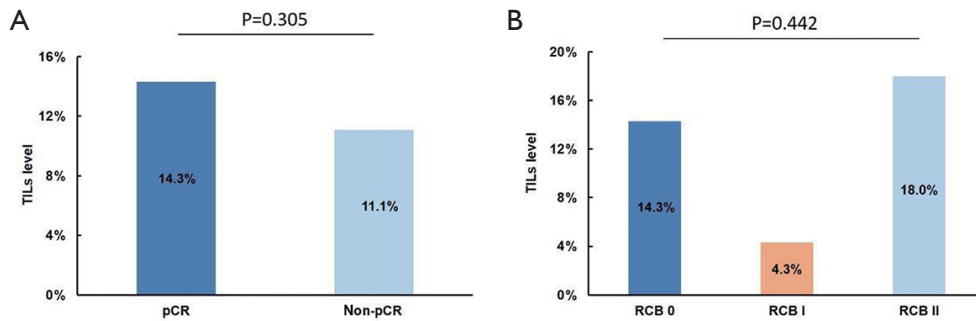


Figure S1 Comparison of baseline TIL levels in primary tumors of patients with different outcomes. (A) TIL levels in the pCR and non-pCR populations. (B) TIL levels in the RCB-0, -I, and -II populations. TIL, tumor infiltrating lymphocytes; pCR, pathological complete response; RCB, residual cancer burden.

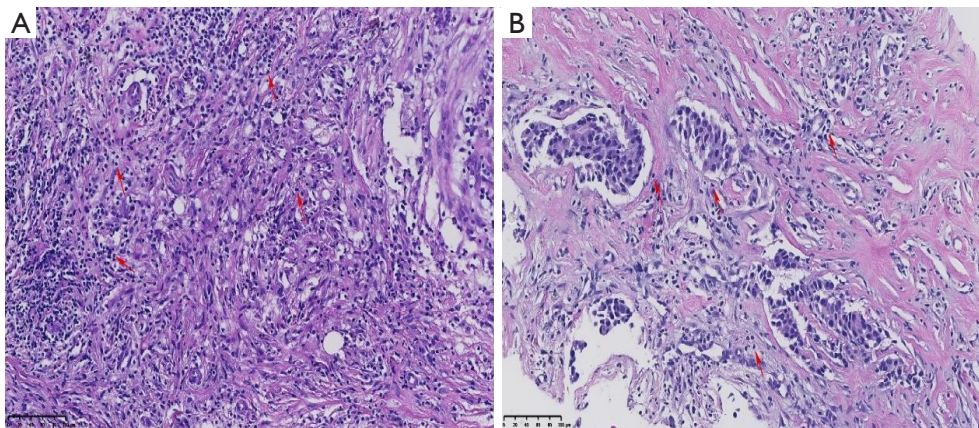


Figure S2 HE staining images of TILs. (A) Representative cases with TILs values of 40%. (B) Representative cases with TILs values of 10%. The red arrows represent lymphocytes.