

Table S1 Univariable and multivariable logistic regression analyses for predictive factors of CT use (SEER database 2010–2015)

Characteristics	Univariable analysis		Multivariable analysis	
	Odds ratio (95% CI)	P value	Odds ratio (95% CI)	P value
Age at diagnosis, years				
≤39	1.0 (reference)		1.0 (reference)	
40–49	0.498 (0.279–0.846)	0.013	0.476 (0.254–0.853)	0.016
50–59	0.336 (0.193–0.556)	<0.001	0.291 (0.159–0.510)	<0.001
60–69	0.228 (0.131–0.376)	<0.001	0.183 (0.100–0.320)	<0.001
≥70	0.053 (0.030–0.089)	<0.001	0.039 (0.021–0.070)	<0.001
Year of diagnosis				
2010–2012	1.0 (reference)		1.0 (reference)	
2013–2015	1.205 (1.046–1.389)	0.01	1.336 (1.129–1.582)	<0.001
Race				
White	1.0 (reference)		–	
Black	1.182 (0.976–1.432)	0.088	–	–
Others	0.953 (0.724–1.252)	0.728	–	–
Marital status				
Married	1.0 (reference)		1.0 (reference)	
Not married	0.716 (0.620–0.827)	<0.001	0.861 (0.725–1.023)	0.088
Laterality				
Right	1.0 (reference)		–	
Left	1.069 (0.928–1.231)	0.358	–	–
Histologic type				
Infiltrating duct carcinoma	1.0 (reference)		1.0 (reference)	
Others	0.517 (0.408–0.651)	<0.001	0.718 (0.544–0.946)	0.019
Histologic grade				
I	1.0 (reference)		1.0 (reference)	
II	2.994 (2.026–4.550)	<0.001	3.336 (2.152–5.298)	<0.001
III + IV	6.640 (4.547–9.991)	<0.001	6.003 (3.907–9.455)	<0.001
Tumor size (mm)				
T1a (2–5)	1.0 (reference)		1.0 (reference)	
T1b (6–10)	4.455 (3.738–5.327)	<0.001	5.633 (4.615–6.903)	<0.001
Breast surgery strategies				
Mastectomy	1.0 (reference)		1.0 (reference)	
BCS	1.212 (1.005–1.463)	0.045	0.668 (0.499–0.894)	0.007
Reconstruction	1.562 (1.187–2.059)	0.002	0.725 (0.519–1.012)	0.059
Regional nodes examined				
0	1.0 (reference)		–	
1–5	2.726 (1.860–4.082)	<0.001	–	–
≥6	2.694 (1.760–4.197)	<0.001	–	–
Radiation therapy				
Yes	1.0 (reference)		1.0 (reference)	
No	0.808 (0.698–0.934)	0.004	0.575 (0.449–0.736)	<0.001

CT, chemotherapy; SEER, the Surveillance, Epidemiology, and End Results; CI, confidence interval; BCS, breast-conserving surgery.

Table S2 Demographic, clinical, and pathological characteristics of patients with T1a,bN0M0 triple-negative breast cancer before and after propensity score matching (SEER database 2010–2015)

Characteristic	Before PSM		P value	After PSM		P value
	CT cohort (n=1,534) No./Total No. (%)	No-CT cohort (n=1,531) No./Total No. (%)		CT cohort (n=770) No./Total No. (%)	No-CT cohort (n=770) No./Total No. (%)	
Age at diagnosis (years)*			<0.001			0.317
≤39	87 (5.7)	18 (1.2)		20 (2.6)	16 (2.1)	
40–49	279 (18.2)	116 (7.6)		91 (11.8)	86 (11.2)	
50–59	500 (32.6)	308 (20.1)		233 (30.3)	204 (26.5)	
60–69	505 (32.9)	458 (29.9)		263 (34.2)	298 (38.7)	
≥70	163 (10.6)	631 (41.2)		163 (21.2)	166 (21.6)	
Year of diagnosis*			0.011			0.284
2010–2012	726 (47.3)	796 (52.0)		406 (52.7)	384 (49.9)	
2013–2015	808 (52.7)	735 (48.0)		364 (47.3)	386 (50.1)	
Race*			0.198			0.138
White	1,150 (75.0)	1,176 (76.8)		554 (71.9)	582 (75.6)	
Black	275 (17.9)	238 (15.6)		146 (19.0)	137 (17.8)	
Others	109 (7.1)	117 (7.6)		70 (9.1)	51 (6.6)	
Marital status*			<0.001			0.127
married	971 (63.3)	846 (55.3)		496 (64.4)	466 (60.5)	
Not married	563 (36.7)	685 (44.7)		274 (35.6)	304 (39.5)	
Laterality*			0.377			0.508
Right	735 (47.9)	759 (49.6)		394 (51.2)	380 (49.4)	
Left	799 (52.1)	772 (50.4)		376 (48.8)	390 (50.6)	
Histologic type*			<0.001			0.415
Infiltrating duct carcinoma	1,411 (92.0)	1,310 (85.6)		691 (89.7)	680 (88.3)	
Others	123 (8.0)	221 (14.4)		79 (10.3)	90 (11.7)	
Histologic grade*			<0.001			0.36
I	32 (2.1)	150 (9.8)		31 (4.0)	28 (3.6)	
II	373 (24.3)	584 (38.1)		264 (34.3)	240 (31.2)	
III + IV	1,129 (73.6)	797 (52.1)		475 (61.7)	502 (65.2)	
Tumor size* (mm)			<0.001			0.812
T1a (2–5)	212 (13.8)	638 (41.7)		190 (24.7)	185 (24.0)	
T1b (6–10)	1,322 (86.2)	893 (58.3)		580 (75.3)	585 (76.0)	
Breast surgery strategies*			0.006			0.778
Mastectomy	249 (16.2)	299 (19.5)		138 (17.9)	133 (17.3)	
BCS	1,099 (71.6)	1,089 (71.1)		540 (70.1)	552 (71.7)	
Reconstruction	186 (12.1)	143 (9.3)		92 (12.0)	85 (11.0)	
Regional nodes examined*			<0.001			0.634
0	36 (2.3)	94 (6.1)		22 (2.9)	17 (2.2)	
1–5	1,304 (85.0)	1,249 (81.6)		660 (85.7)	658 (85.5)	
≥6	194 (12.7)	188 (12.3)		88 (11.4)	95 (12.3)	
Radiation therapy*			0.005			1.0
Yes	989 (64.5)	910 (59.4)		477(61.9)	476 (61.8)	
No	545 (35.5)	621 (40.6)		293(38.1)	294 (38.2)	
Vital status			–			–
Alive	1,466 (95.6)	1,400 (91.4)		743 (96.5)	722 (93.8)	
Breast cancer-specific mortality	53 (3.5)	43 (2.8)		16 (2.1)	20 (2.6)	
Other cause-specific mortality	15 (1.0)	88 (5.8)		11 (1.4)	28 (3.6)	

*, based on these variables, propensity score matching was performed for the CT and no-CT cohorts. SEER, the Surveillance, Epidemiology, and End Results; PSM, propensity score matching; CT, chemotherapy; CI, confidence interval; BCS, breast-conserving surgery.

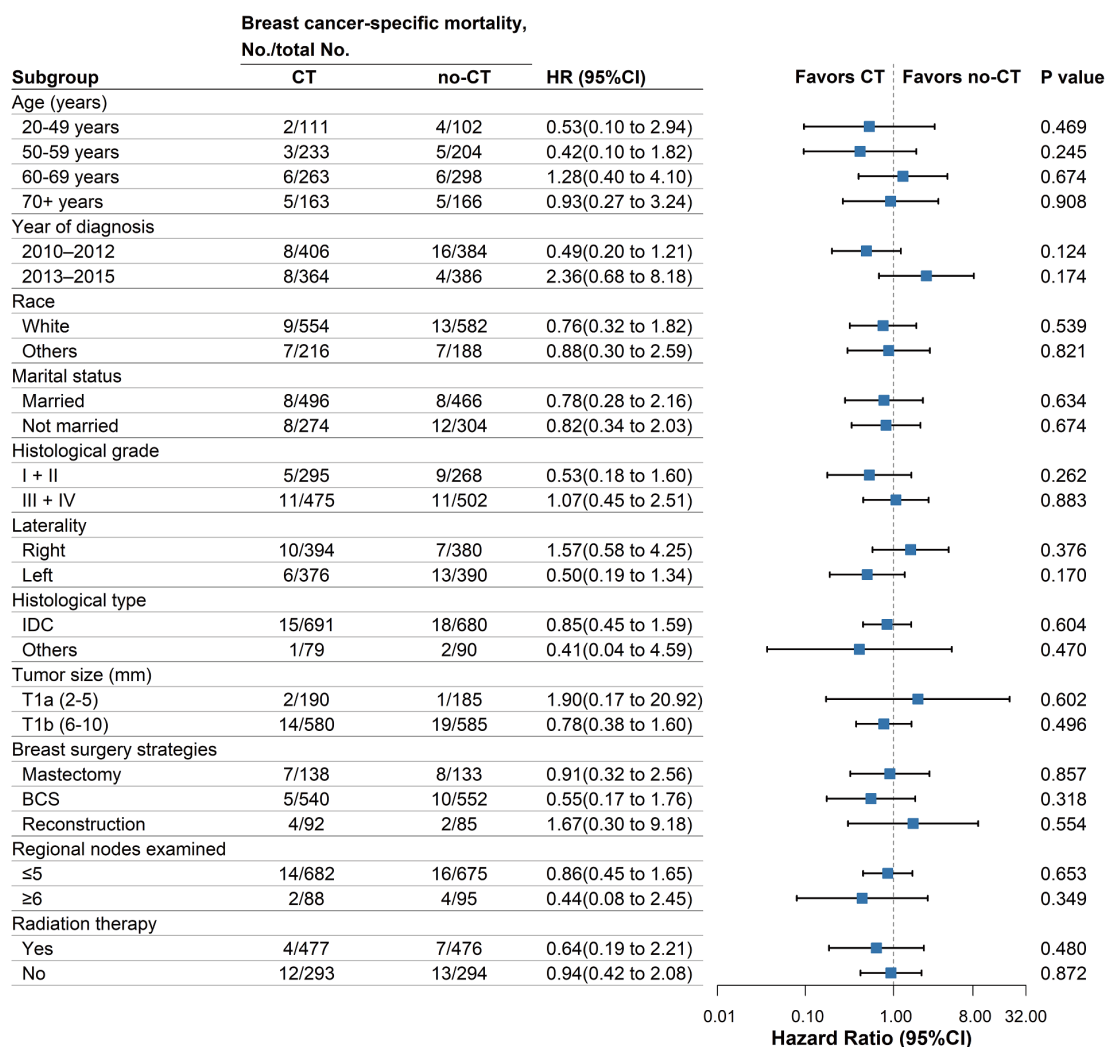


Figure S1 Exploratory subgroup analysis of breast cancer-specific mortality in the exact matched cohort (n=1,540) after propensity score matching. IDC, infiltrating duct carcinoma; BCS, breast-conserving surgery; CT, chemotherapy; CI, confidence interval.