

Figure S1 Molecular interaction network diagrams of the selected top KEGG-related hypermethylated blocks (A) and hypomethylated blocks (B).

Table S1 Characteristics of the four block-related genes and their description in PC diagnosis prediction

Blocks	Coefficient	P value	Chr	Start	End	Detailed Annotation	Gene Name	Gene Description	Gene Type
br6601	3.144	0.045	chr7	27215421	27215783	intron (NR_037939, intron 1 of 1)	HOXA10	homeobox A10	protein-coding
br5975	5.419	0.040	chr6	170578542	170578738	intron (NR_126021, intron 2 of 2)	LINC01624	long intergenic non-protein coding RNA 1624	ncRNA
br5745	7.978	0.003	chr1	27852657	27852890	Intergenic	WASF2	WASP family member 2	protein-coding
br3919	6.093	0.016	chr11	33209584	33209810	intron (NR_034027, intron 1 of 3)	CSTF3-DT	CSTF3 divergent transcript	ncRNA

PC, pancreatic cancer.

Table S2 Univariate Cox regression of the four blocks in the SU cohort (n=50)

Characteristic	HR	95% CI	P value
br6601	27.9	(1.59, 489)	0.023
br5975	92.8	(1.43, 6,017)	0.033
br5745	39.2	(1.31, 1,171)	0.034
br3919	610	(7.18, 51,771)	0.005

SU, Soochow University; HR, hazard ratio; CI, confidence interval.

Table S3 Univariate Cox regression of the four blocks in the TCGA cohort (n=166)

Characteristic	HR	95% CI	P value
br6601	5.32	(1.35, 20.9)	0.017
br5975	10.5	(2.00, 55.4)	0.005
br5745	8.99	(1.74, 46.6)	0.009
br3919	6.17	(1.38, 27.5)	0.017

TCGA, The Cancer Genome Atlas; HR, hazard ratio; CI, confidence interval.

Table S4 Multivariate Cox regression of the four blocks in the SU cohort

Characteristic	HR	95% CI	P value
br6601	23.2	(1.07, 505)	0.045
br5975	226	(1.28, 39,850)	0.040
br5745	2,917	(16.1, 530,001)	0.003
br3919	443	(3.09, 63,455)	0.016

SU, Soochow University ; HR, hazard ratio; CI, confidence interval.

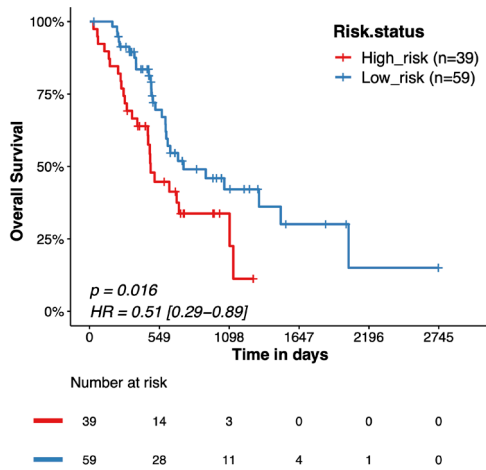


Figure S2 Kaplan-Meier survival curve of the TCGA R0 patients (n=98) classified into high- and low-risk groups. TCGA, The Cancer Genome Atlas.

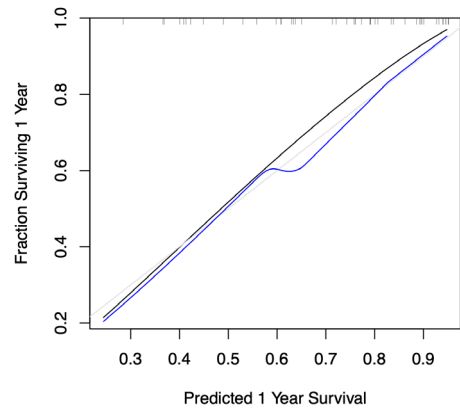


Figure S3 The calibration curve of the predicted 1-year OS of PC patients using the four-block risk-score model. OS, overall survival; PC, pancreatic cancer.

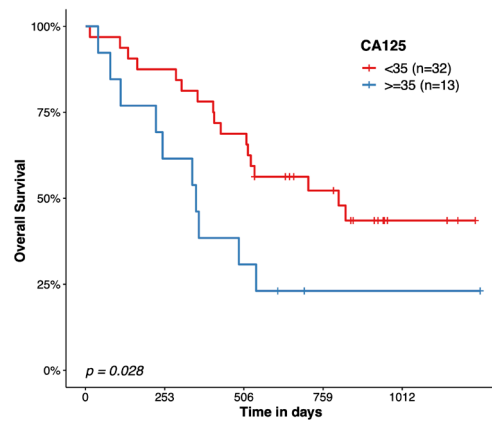


Figure S4 Kaplan-Meier survival curves of patients (n=45) with elevated CA125 (≥ 35 U/mL) and normal CA125 (< 35 U/mL).