

Figure S1 Histological features of PTs of the breast (HE staining). (A) Tumor border ($\times 10$, scale bar =100 μm); (B) stromal overgrowth ($\times 10$, scale bar =100 μm); (C) stromal atypia ($\times 40$, scale bar =50 μm); (D) stromal cellularity ($\times 20$, scale bar =100 μm); (E) mitotic activity ($\times 40$, scale bar =50 μm); (F) surgical margin: negative ($\times 1.5$, scale bar =1,000 μm) and positive ($\times 10$, scale bar =100 μm). PT, phyllodes tumor; HE, hematoxylin-erosin staining.

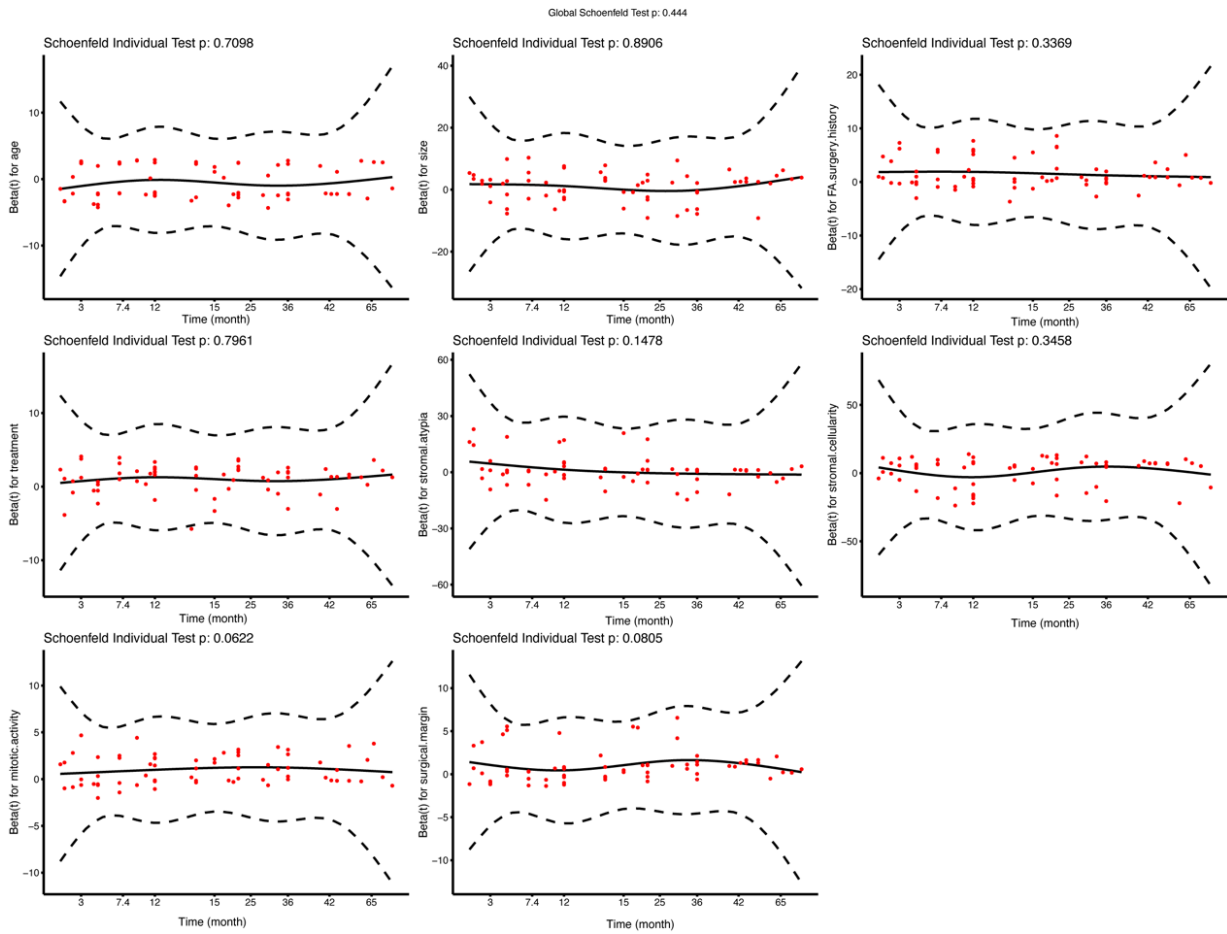


Figure S2 Schoenfeld individual test of Cox proportional hazards regression analysis with all factors meeting the results of the proportional test ($P>0.05$).

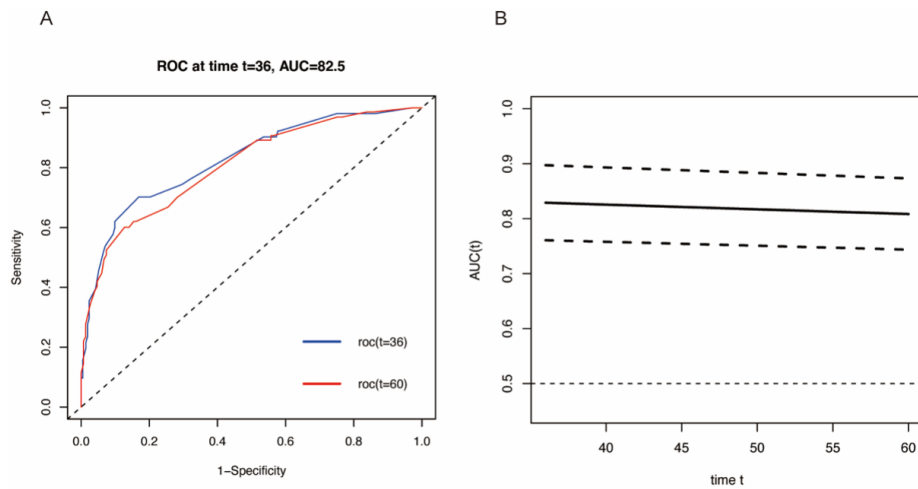


Figure S2 ROC curve and AUC change over time. The AUC value at 3 years after surgery was 82.90 (95% CI: 79.42–86.38). ROC, receiver operating characteristic; AUC, area under the curve.