

Table S1 Relationship between STMN1 Phosphorylation and therapeutic effect of NACT

Proteins	Pathologic response			Objective response rate		
	pCR	Non-pCR	P value	ORR	Non-ORR	P value
STMN1			0.220			0.334
High	1	24		6	3	
Low	11	56		28	4	
GRP78			0.293			0.279
High	8	51		21	7	
Low	10	37		20	2	
Ser38			0.761			≈1
High	3	23		9	2	
Low	12	60		26	5	
Ser25			0.534			≈1
High	5	30		7	3	
Low	9	37		15	5	
Ser63			0.092			0.351
High	9	24		15	1	
Low	10	63		30	8	
Ser16			0.355			0.712
High	10	43		10	2	
Low	5	37		6	3	

NACT, neoadjuvant chemotherapy; pCR, pathological complete response; ORR, objective response rate.

Table S2 Relationship between p-STMN1/GRP78 model risk and therapeutic effect of NACT

Model	Pathologic response			Objective response rate		
	pCR	Non-pCR	P value	ORR	Non-ORR	P value
p-STMN1/GRP78 model risk			0.350			0.812
High	9	28		16	14	
Low	4	23		11	11	

NACT, neoadjuvant chemotherapy; pCR, pathological complete response; ORR, objective response rate.

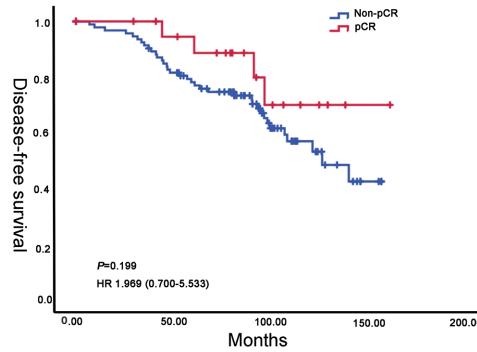


Figure S1 Kaplan-Meier analysis of DFS in breast cancer patients from pCR than non-pCR group. DFS, disease-free survival; HR, hazard ratio; pCR, pathological complete response.

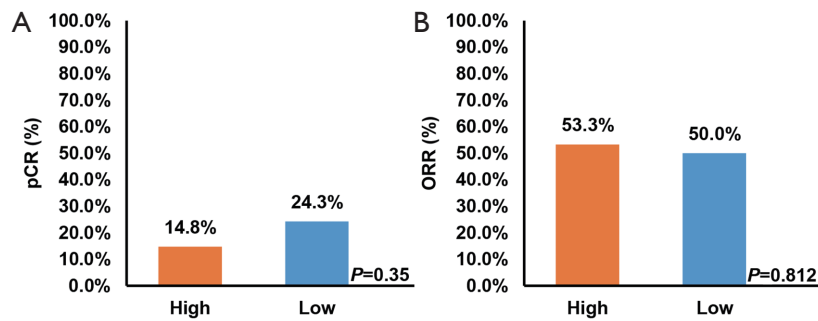


Figure S2 Relationship between p-STMN1GRP78 model risk and therapeutic effect of NACT (A) Correlation between p-STMN1GRP78 model risk and pathologic response. (B) Correlation between p-STMN1GRP78 model risk and objective response rate. NACT, neoadjuvant chemotherapy; pCR, pathological complete response; ORR, objective response rate.