

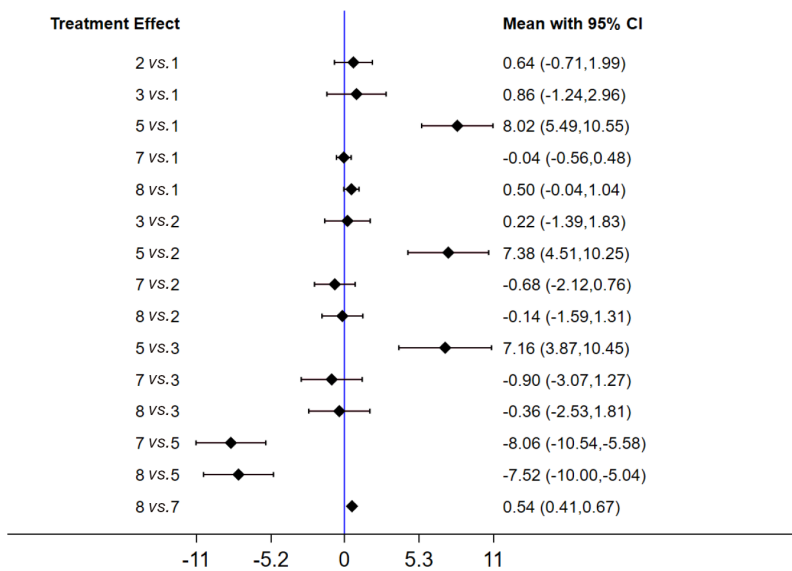
Appendix 1

Retrieval strategy

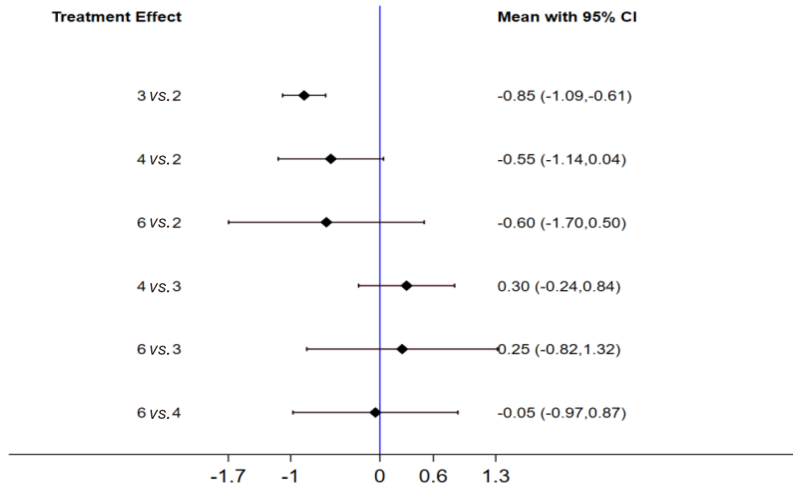
Step	Search term
#1	Breast Cancer Lymphedema[MeSH Terms]
#2	Breast Cancer Lymphedema[Title/Abstract] OR (Breast Cancer Lymphedemas[Title/Abstract]) OR (Breast Cancer Treatment Related Lymphedema[Title/Abstract]) OR (Breast Cancer Related Arm Lymphedema[Title/Abstract]) OR (Breast Cancer Related Lymphedema[Title/Abstract]) OR (Postmastectomy Lymphedema[Title/Abstract]) OR (Postmastectomy Lymphedemas[Title/Abstract]) OR (Lymphedema, Post-mastectomy[Title/Abstract]) OR (Post mastectomy Lymphedema[Title/Abstract])
#3	#1 OR #2
#4	Acupuncture OR Acupuncture Therapy OR Acupuncture, Ear OR Electroacupuncture OR Moxibustion[MeSH Terms]
#5	Acupuncture[Title/Abstract] OR (Pharmacopuncture[Title/Abstract]) OR (Acupuncture Treatment[Title/Abstract]) OR (Acupuncture Treatments[Title/Abstract]) OR (Pharmacoacupuncture Treatment[Title/Abstract]) OR (Pharmacoacupuncture Therapy[Title/Abstract]) OR (Acupotomy[Title/Abstract]) OR (Acupotomies[Title/Abstract]) OR (Acupuncture, Ear[Title/Abstract]) OR (Ear Acupunctures[Title/Abstract]) OR (Auricular Acupuncture[Title/Abstract]) OR (Auricular Acupunctures[Title/Abstract]) OR (Electroacupuncture[Title/Abstract]) OR (Moxibustion[Title/Abstract]) OR (Moxabustion[Title/Abstract])
#6	#4 OR #5
#7	#3 AND #6

Forest map

Arm circumference



## VAS



## League table

### Arm circumference

Intervention	MD (95% CI)					
	8	7	5	3	2	1
8	0	-0.54 (-0.67, -0.41)	7.52 (5.04, 10.00)	0.36 (-1.81, 2.53)	0.14 (-1.31, 1.59)	-0.50 (-1.04, 0.04)
7		0	8.06 (5.58, 10.54)	0.90 (-1.27, 3.07)	0.68 (-0.76, 2.12)	0.04 (-0.48, 0.56)
5			0	-7.16 (-10.45, -3.87)	-7.38 (-10.25, -4.51)	-8.02 (-10.55, -5.49)
3				0	-0.22 (-1.83, 1.39)	-0.86 (-2.96, 1.24)
2					0	-0.64 (-1.99, 0.71)
1						0

## VAS

Intervention	[MD (95% CI)]			
	6	4	3	2
6	0			
4	-0.05 (-0.97, 0.87)	0		
3	0.25 (-0.82, 1.32)	0.30 (-0.24, 0.84)	0	
2	-0.60 (-1.70, 0.50)	-0.55 (-1.14, 0.04)	-0.85 (-1.09, -0.61)	0