

Figure S1 Flow chart for patient recruitment. SNB, sentinel lymph node biopsy; SN, sentinel lymph node; NAC, neoadjuvant chemotherapy; ALND, axillary lymph node dissection.

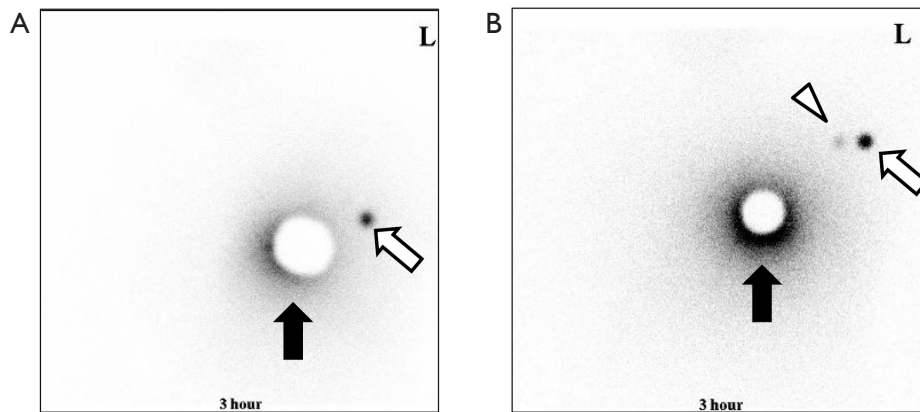


Figure S2 Lymphoscintigraphy performed 3 h after injections of phytate sodium hydrate and ^{99m}Tc . The Representative image of patient with left breast cancer who had only one SN (A) or two SNs (B) detected by lymphoscintigraphy. Black arrow: primary tumor; white arrow: hottest SN; white arrow head: second radioactive SN. SN, sentinel lymph node; L, left.

Table S1 Comparison of SN identification rate by indigo carmine blue dye and ICG between the 1st SN and 2nd SN group

	1 st SN group	2 nd SN group	P value
Indigo carmine blue dye			
1 st SN	80/88 (90.9%)	20/26 (76.9%)	0.08
2 nd SN	42/59 (71.2%)	18/26 (69.2%)	0.99
ICG			
1 st SN	87/88 (98.9%)	24/26 (92.3%)	0.12
2 nd SN	49/59 (83.1%)	23/26 (88.5%)	0.74

SN, sentinel lymph node; ICG, indocyanine green.