

Table S1 Search strategy

#1	Leiomyomas[Mesh]
#2	Fibroid Tumor[Title/Abstract]
#3	Fibroid Tumors[Title/Abstract]
#4	Tumor, Fibroid[Title/Abstract]
#5	Tumors, Fibroid[Title/Abstract]
#6	Fibromyoma[Title/Abstract]
#7	Fibromyomas[Title/Abstract]
#8	Fibroid[Title/Abstract]
#9	Fibroids[Title/Abstract]
#10	Fibroid Uterus[Title/Abstract]
#11	Uterus, Fibroid[Title/Abstract]
#12	Fibroma, Uterine[Title/Abstract]
#13	Fibromas, Uterine[Title/Abstract]
#14	Uterine Fibroma[Title/Abstract]
#15	Uterine Fibromas[Title/Abstract]
#16	Fibroids, Uterine[Title/Abstract]
#17	cUterine Fibroid[Title/Abstract]
#18	Uterine Fibroids[Title/Abstract]
#19	Leiomyoma, Uterine[Title/Abstract]
#20	#1 OR #2 OR #3 OR #4 OR #5 OR #6 OR #7 OR #8OR #9 OR #10 OR #11 OR #12 OR #13 OR #14 OR #15 OR#16 OR #17 OR #18 OR #19
#21	elagolix sodium[Mesh]
#22	R-(+)-4-(2-(5-(2-fluoro-3-methoxyphenyl)-3-(2-fluoro-6-(trifluoromethyl)benzyl)-4-methyl-2,6-dioxo-3,6-dihydro-2H-pyrimidin-1-yl)-1-phenylethylamino)butyrate[Title/Abstract]
#23	Orilissa[Title/Abstract]
#24	#21 OR #22 OR #23
#25	Randomized Controlled Trial [Publication Type]
#26	#20 OR #24 OR #25

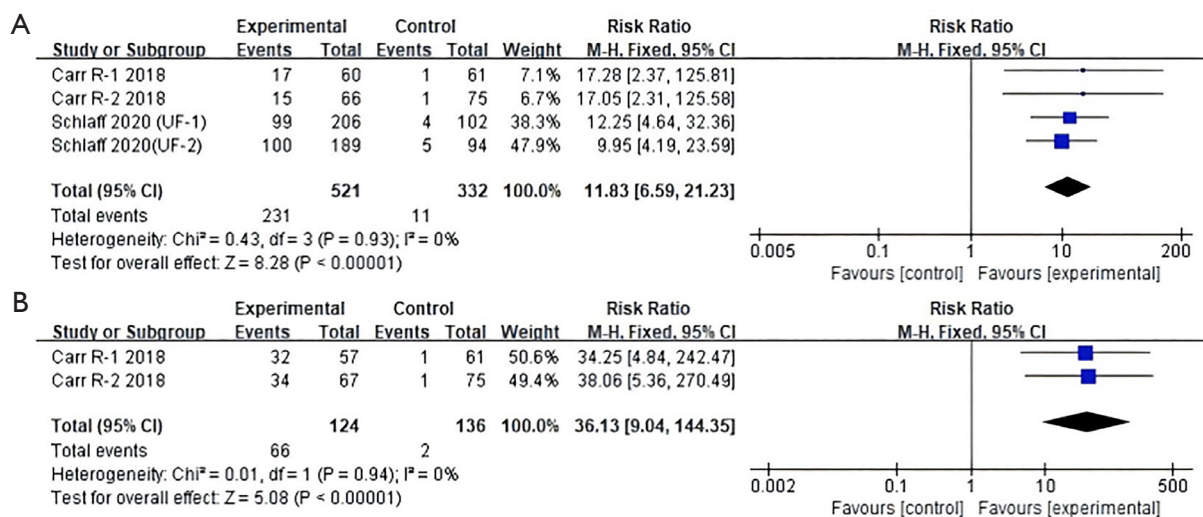


Figure S1 Forest plot for amenorrhea. (A) Forest plot comparing in Amenorrhoea between elagolix and placebo; (B) Forest plot comparing in Amenorrhoea between elagolix add-back and placebo.

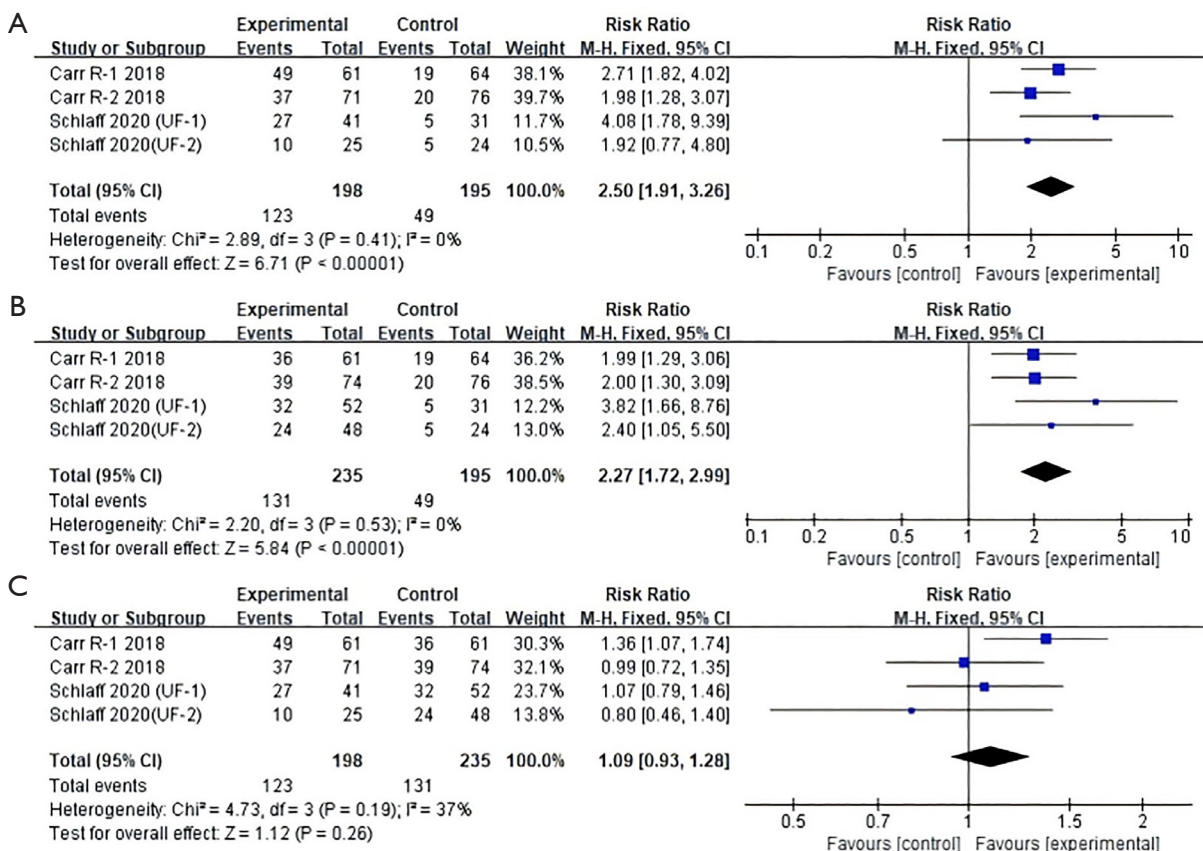


Figure S2 Forest plot for women reached the hemoglobin level criteria. (A) Forest plot of women reached the hemoglobin level criteria between elagolix and placebo; (B) Forest plot of women reached the hemoglobin level criteria between elagolix add-back and placebo; (C) Forest plot of women reached the hemoglobin level criteria between elagolix and elagolix add-back. M-H, Mantel-Haenszel; CI, confidence interval.

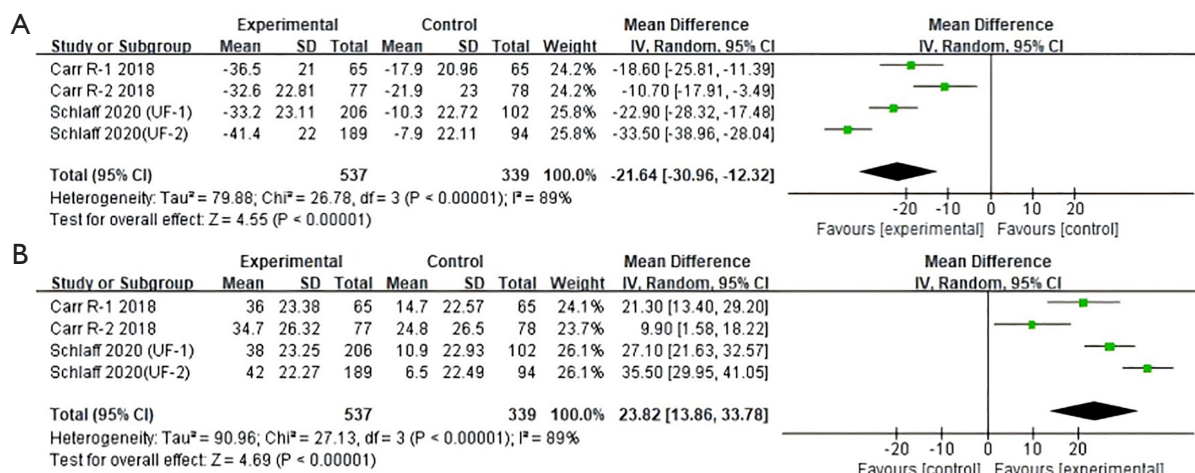


Figure S3 Forest plot for change in UFS-QoL (symptom severity). (A) Mean difference in change in UFS-QoL (symptom severity) between elagolix add-back and placebo; (B) Mean difference in change in UFS-QoL (health-related quality of life) between elagolix add-back and placebo. UFS-QoL, uterine fibroid symptom quality of life.

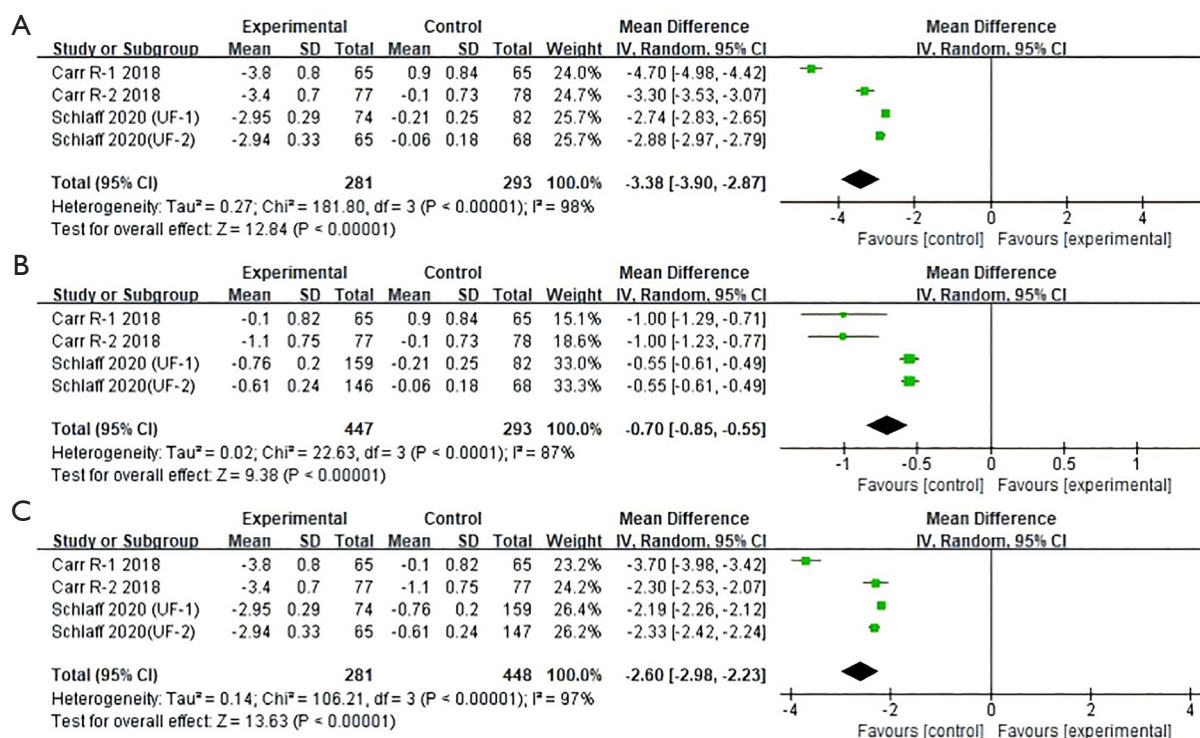


Figure S4 Forest plot for change in lumbar spine. (A) Mean difference in change in lumbar spine between elagolix and placebo; (B) Mean difference in change in lumbar spine between elagolix add-back and placebo; (C) Mean difference in change in lumbar spine between elagolix and elgolix add-back.

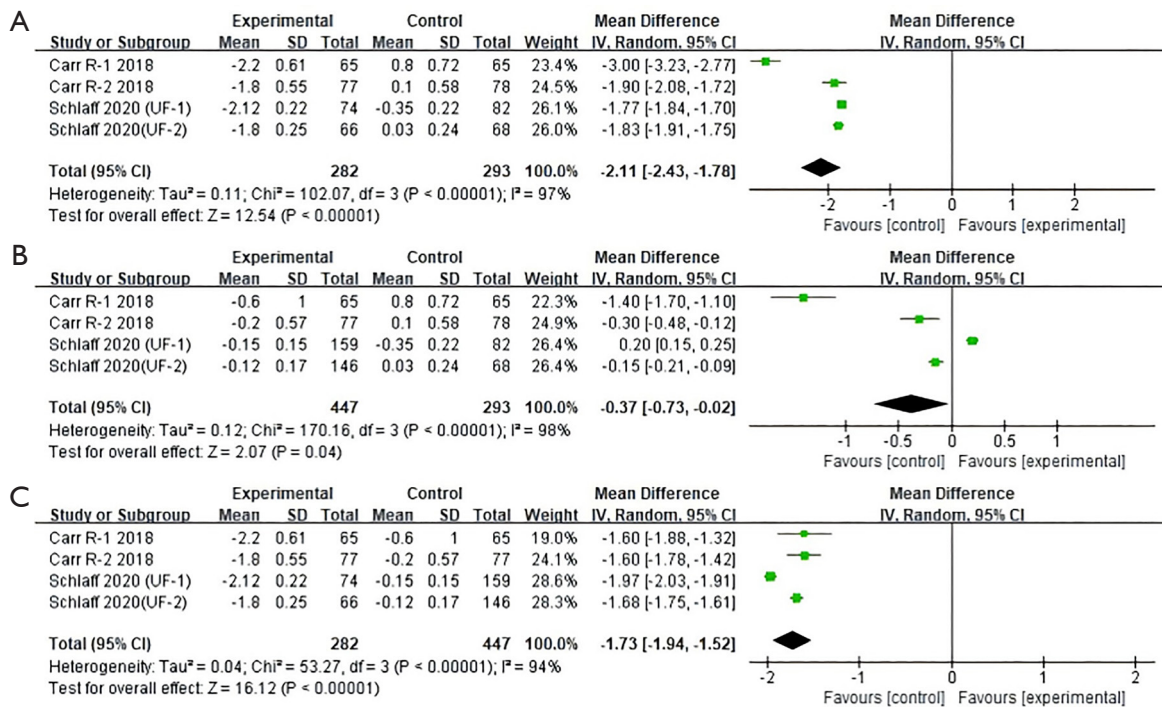


Figure S5 Forest plot for change in total hip. (A) Mean difference in change in total hip between elagolix and placebo; (B) Mean difference in change in total hip between elagolix add-back and placebo; (C) Mean difference in change in total hip between elagolix and elagolix add-back.

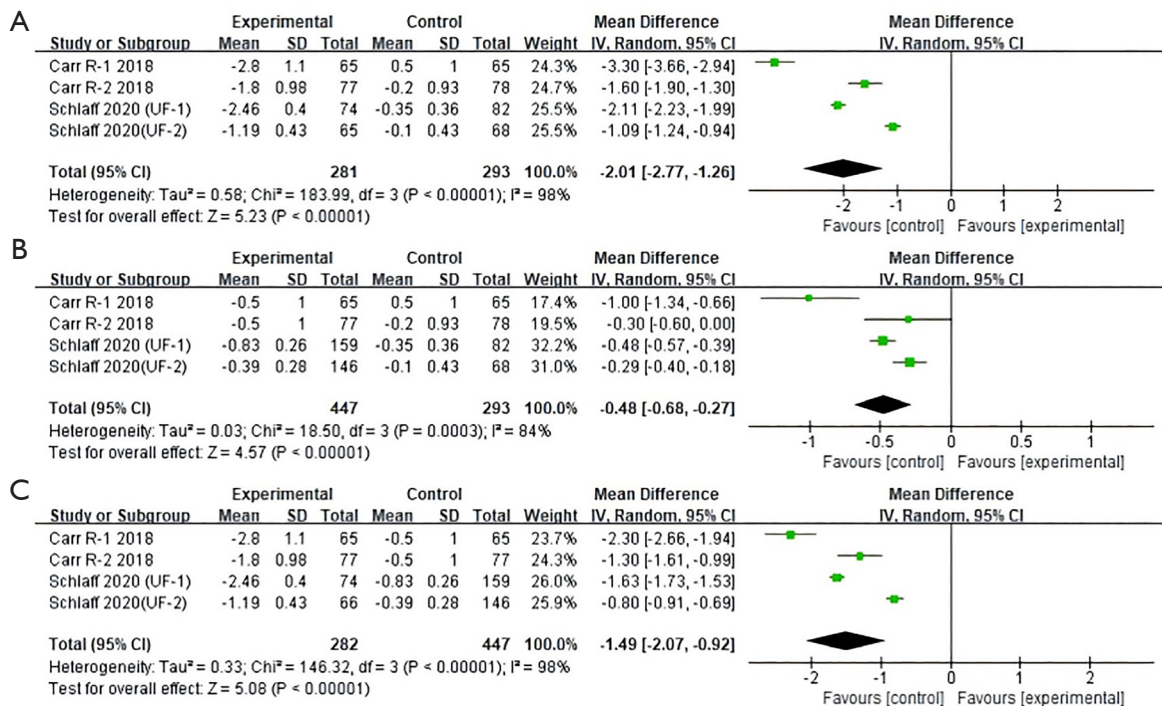


Figure S6 Forest plot for change in femoral neck. (A) Mean difference in change in Femoral neck between elagolix and placebo; (B) Mean difference in change in Femoral neck between elagolix add-back and placebo; (C) Mean difference in change in Femoral neck between elagolix and elagolix add-back.

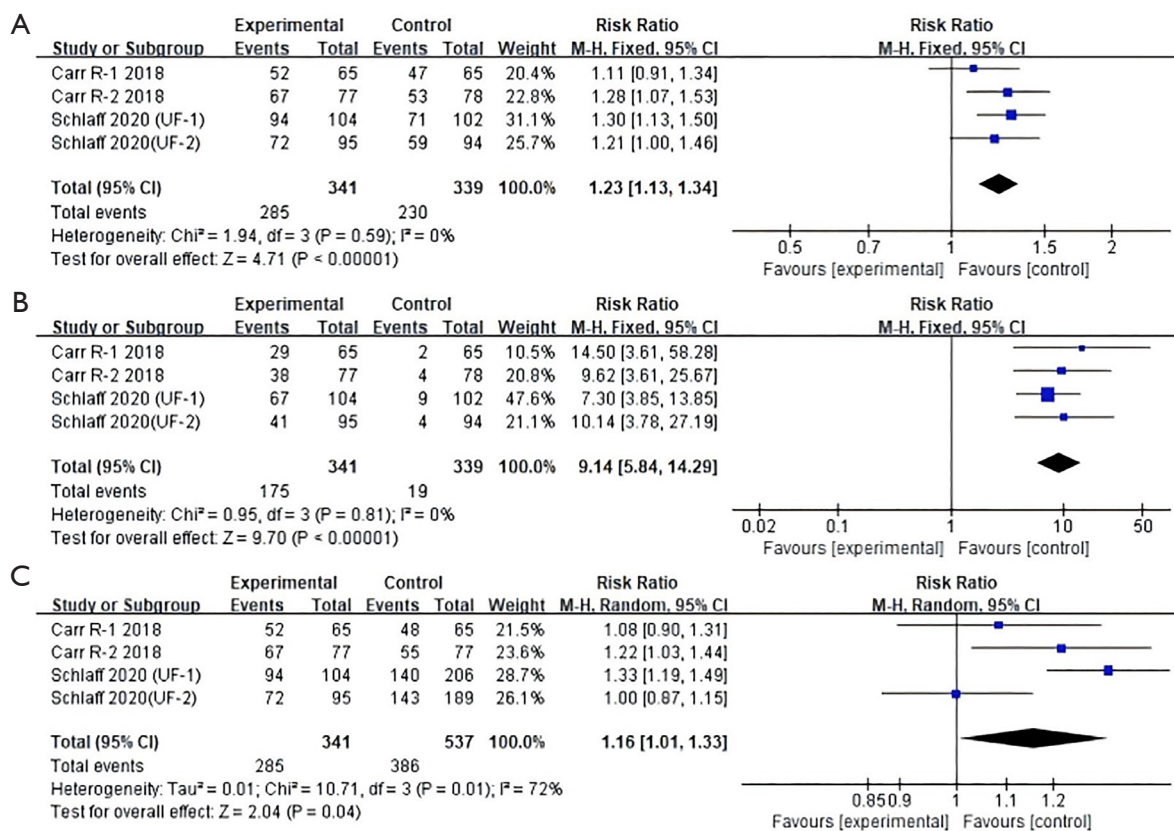


Figure S7 Forest plot for any AEs and hot flush. (A) Forest plot of any AEs between elagolix and placebo; (B) Forest plot of hot flush between elagolix and placebo; (C) Forest plot of any AEs between elagolix and elagolix add-back. AEs, adverse events; M-H, Mantel-Haenszel; CI, confidence interval.

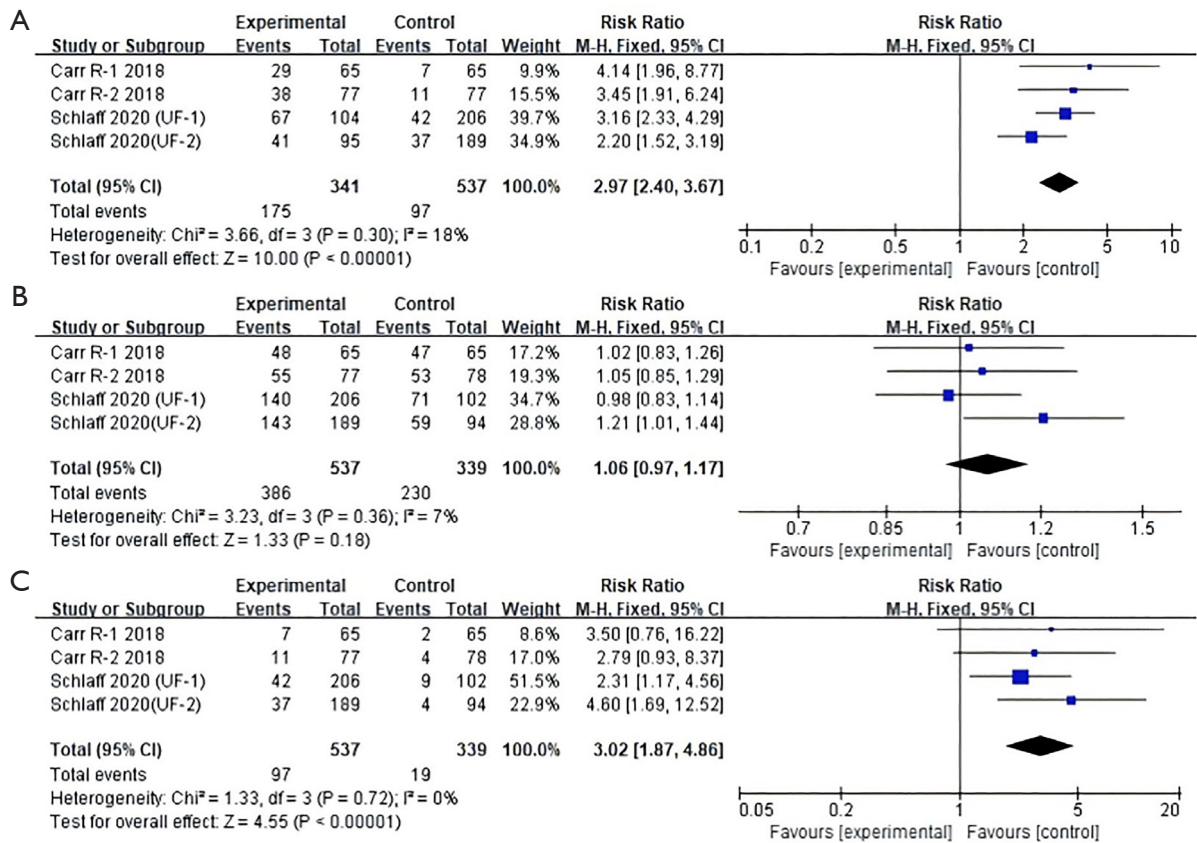


Figure S8 Forest plot for hot flush and any AEs. (A) Forest plot of hot flush between elagolix and elagolix add-back; (B) Forest plot of any AEs between elagolix add-back and placebo; (C) Forest plot of hot flush between elagolix add-back and placebo. AEs, adverse events.

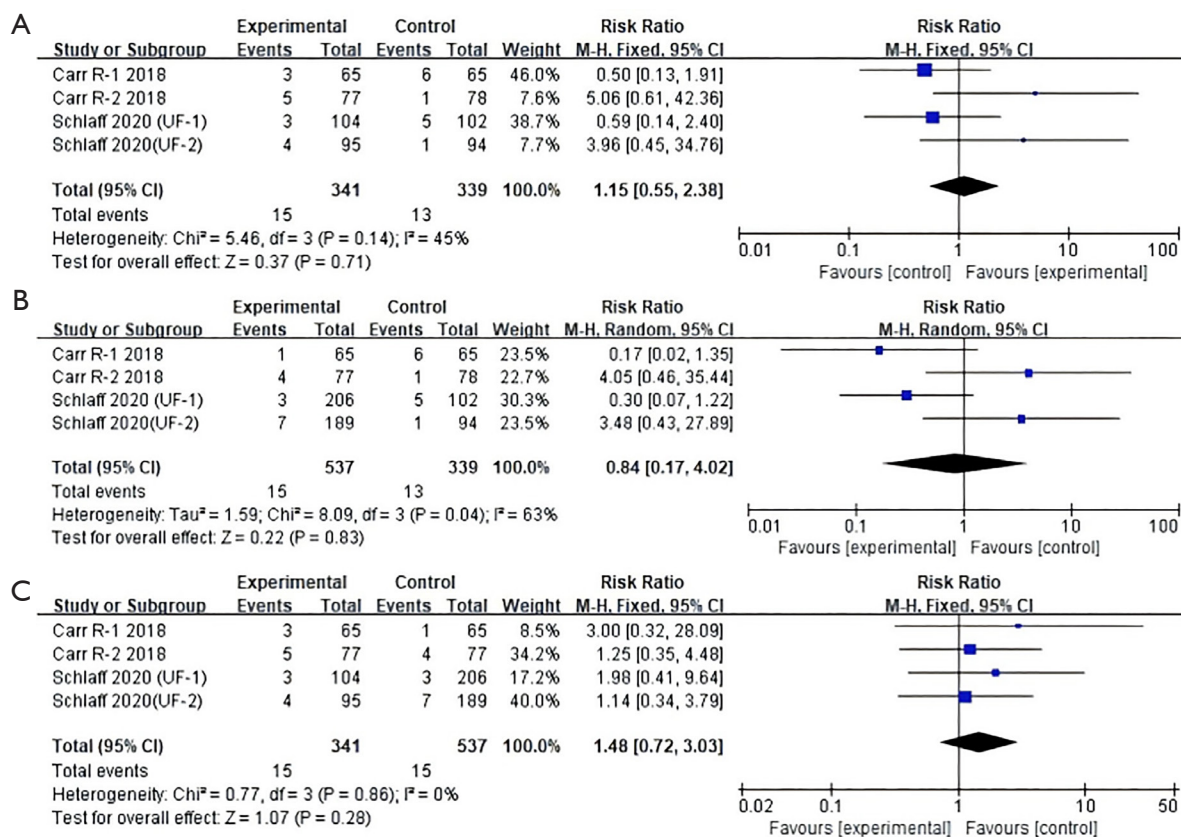


Figure S9 Forest plot for serious AE. (A) Forest plot of serious AE between elagolix and placebo; (B) Forest plot of serious AE between elagolix add-back and placebo; (C) Forest plot of serious AE between elagolix and elagolix add-back. AE, adverse event; M-H, Mantel-Haenszel; CI, confidence interval.