

Figure S1 Development of rat hypoparathyroidism model and parathyroid tissue acquisition. (A) Flow cytometric analysis of CaSR and EpCAM expression in rPT-1 (P3, P5) cultured in different CM; (B) measurement of iPTH secretion from rPT-1 (P3, P5) cultured in different CM via ELISA. each CM, n=3. ***, $P < 0.001$; ****, $P < 0.0001$. CaSR, calcium-sensing receptor; CM, culture medium; ELISA, enzyme-linked immunosorbent assay; EpCAM, epithelial cell adhesion molecule; iPTH, intact parathyroid hormone; ns, not significant; P3, passage 3; P5, passage 5.

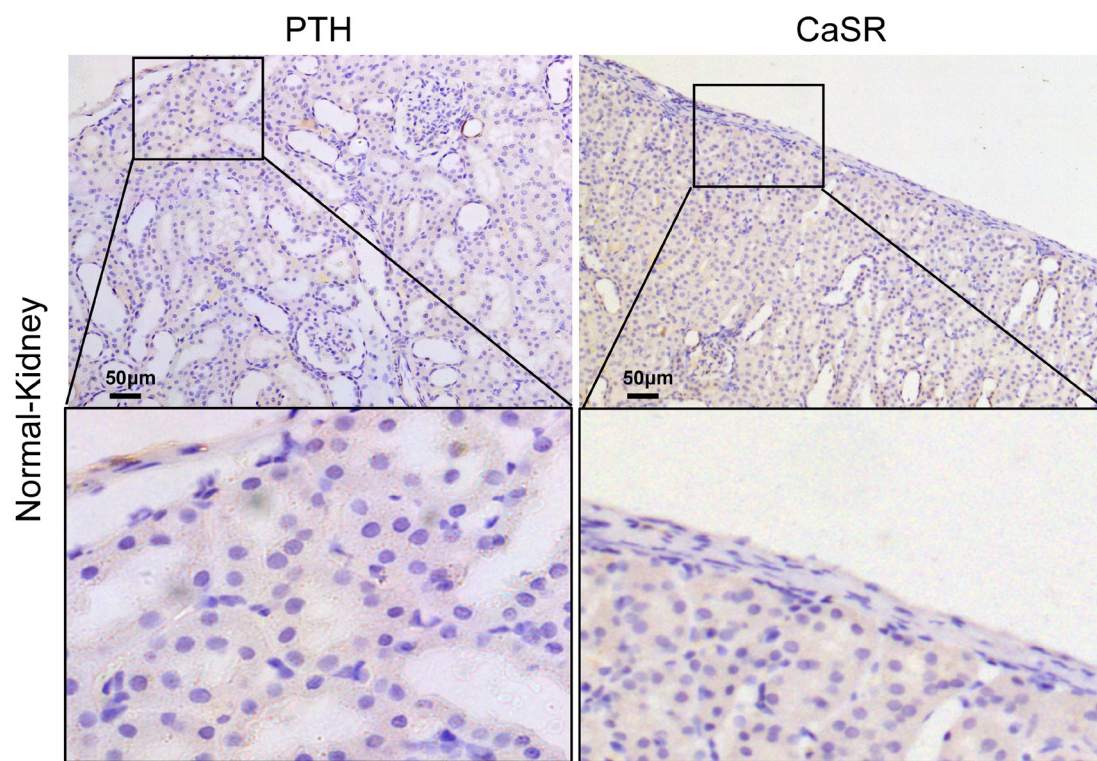


Figure S2 Therapeutic efficacy of rPT-1 Cells in treating rat hypoparathyroidism. Representative immunohistochemical images of PTH and CaSR expression in normal kidney tissue are shown in the bottom panel for comparison. Scale bars, 50 µm. CaSR, calcium-sensing receptor; PTH, parathyroid hormone.