

Figure S1 RD analysis for op time.

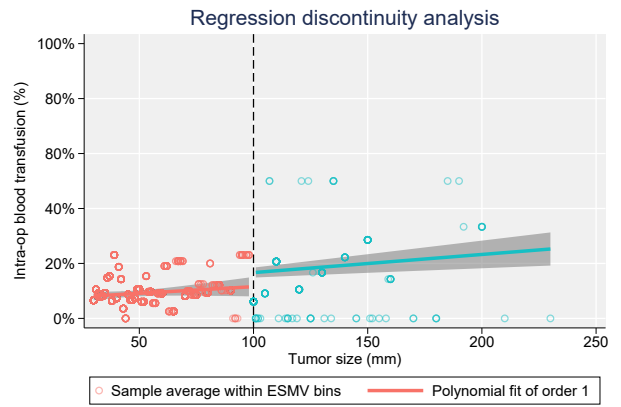


Figure S4 RD analysis for transfusion.

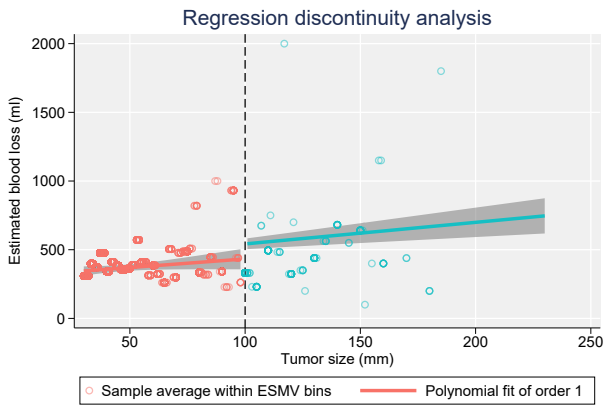


Figure S2 RD analysis for blood loss.

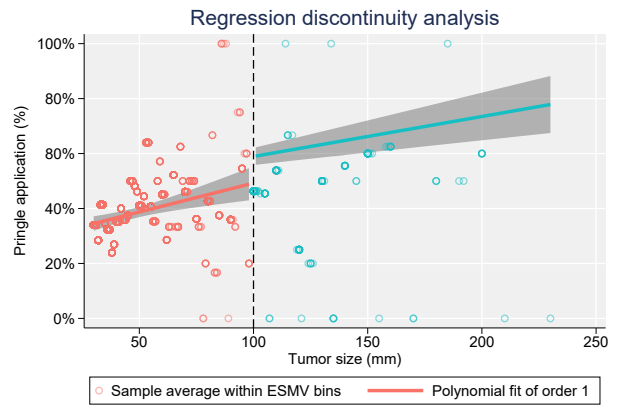


Figure S5 RD analysis for Pringle application.

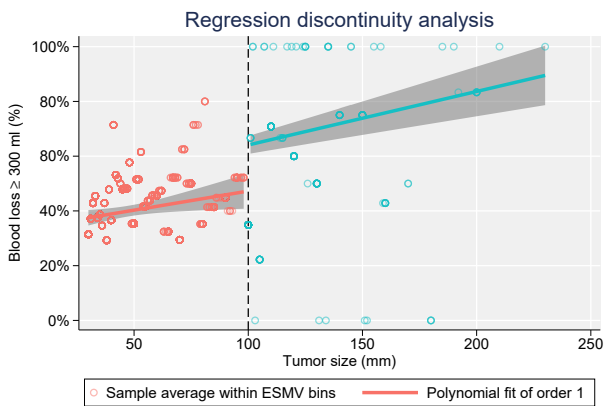


Figure S3 RD analysis for blood loss ≥ 300 mL.

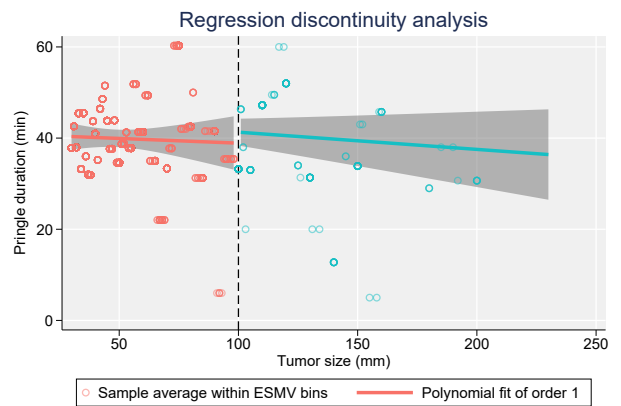


Figure S6 RD analysis for Pringle duration.

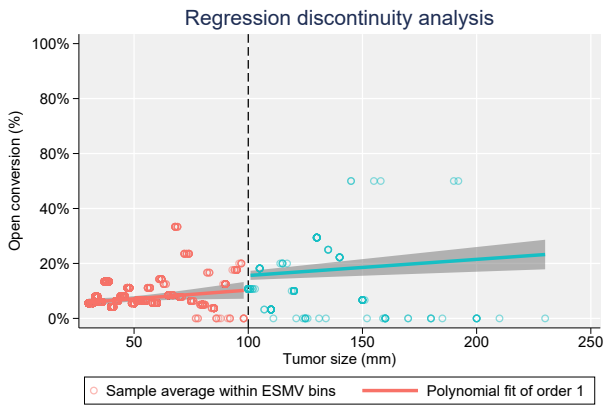


Figure S7 RD analysis for open conversion.

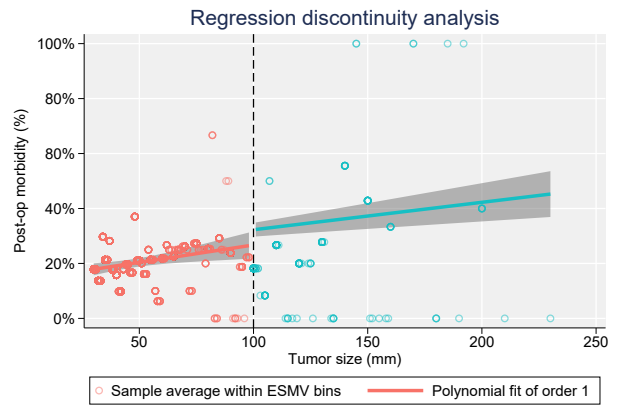


Figure S10 RD analysis for post-op morbidity.

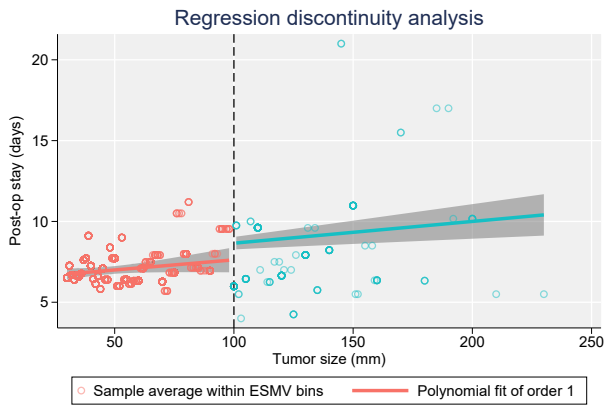


Figure S8 RD analysis for post-op stay.

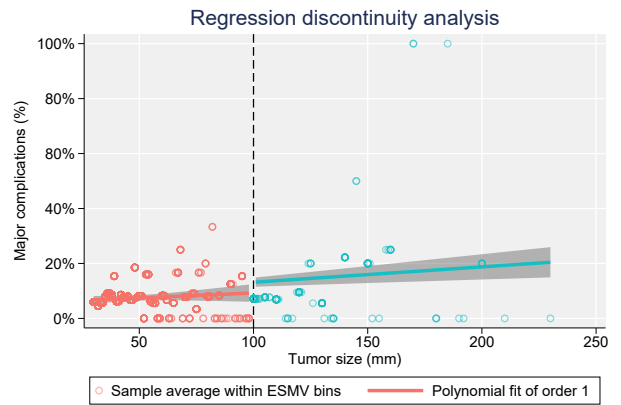


Figure S11 RD analysis for major complication.

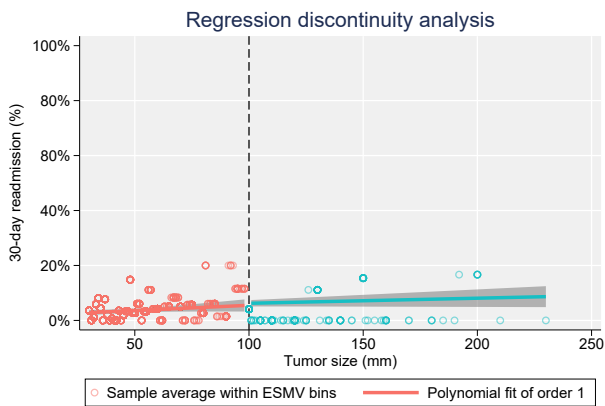


Figure S9 RD analysis for readmission.

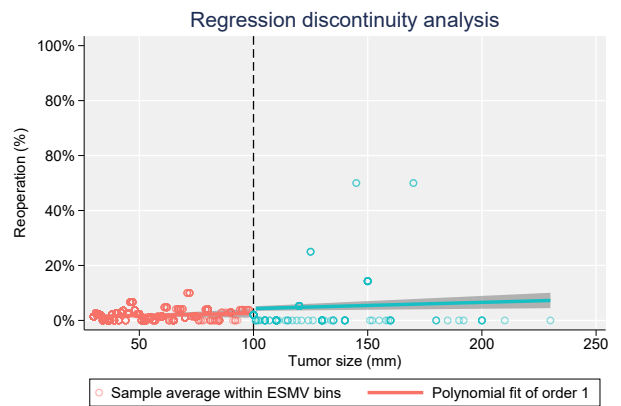


Figure S12 RD analysis for reoperation.

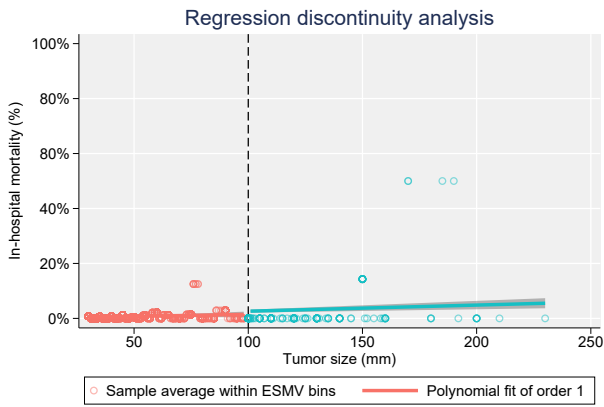


Figure S13 RD analysis for in-hospital mortality.

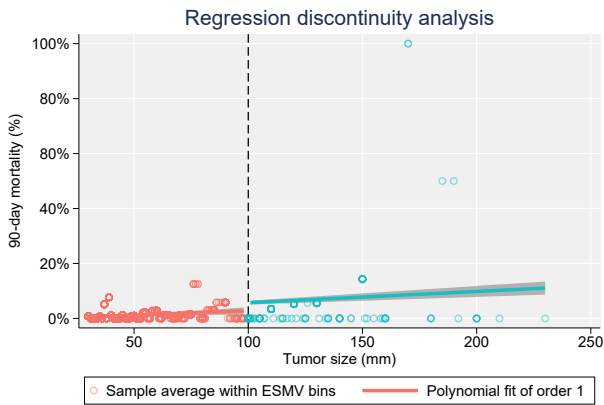


Figure S14 RD analysis for 90-day mortality.

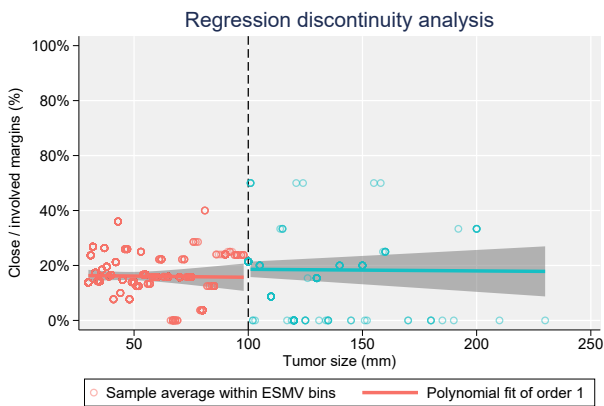


Figure S15 RD analysis for close margins.