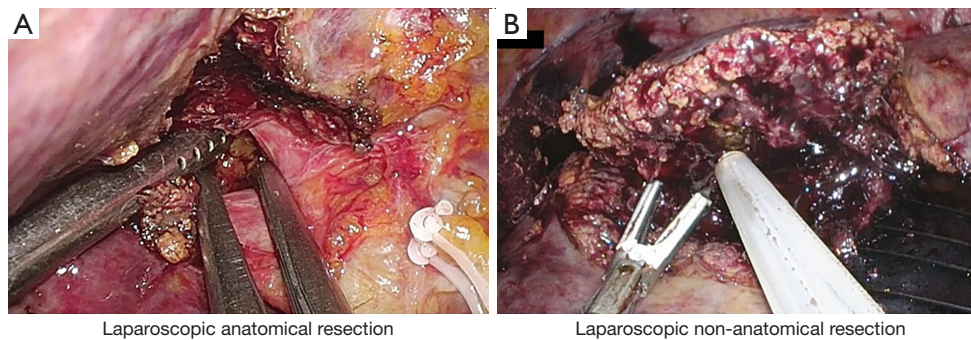


Table S1 Subgroup analysis based on tumor size (>3 cm) in unmatched population

Variables	LAR (N=61)	LNAR (N=7)	P value
Operative data			
Operation time (min), mean \pm standard deviation	329.4 \pm 133.1	140.7 \pm 58.1	0.062
Estimated blood loss (mL), mean \pm standard deviation	1,124.2 \pm 1,282.7	330.0 \pm 307.4	0.019
Transfusion, n (%)	18 (29.5%)	0	0.177
Pringle maneuver, n (%)	36 (59.0%)	4 (57.1%)	0.933
Postoperative data			
Hospital stay (days), mean \pm standard deviation	9.2 \pm 4.7	6.8 \pm 5.1	0.020
C-D complications, n (%)			0.244
IIIa	5 (8.3%)	3 (40.0%)	
IIIb	3 (5.0%)	0	
IV	2 (3.3%)	0	
V	0	0	
Pathologic data, mean \pm standard deviation			
Tumor size (cm)	5.6 \pm 2.5	3.6 \pm 0.4	0.027
Surgical margin (cm)	1.1 \pm 1.4	0.5 \pm 0.4	0.018

**Figure S1** Surgical step of LAR and LNAR.