

Table S1 Description of literature reviews conducted

Topic	Focus of literature search	Reviewing author
PCL epidemiology and classification	Epidemiological studies of PCL incidence, prevalence and burden; reviews and guidelines on PCL classification	RSY Tang
PCL detection and diagnosis	Guidelines for PCL detection and diagnosis; population studies identifying risk factors for PCL and pancreatic cancer	WK Seto
Imaging	Guidelines for PCL detection and diagnosis; guidelines and reviews of radiological investigation of PCL; observational studies assessing performance of imaging modalities for PCL monitoring	KWH Chiu
EUS	Guidelines for PCL detection and diagnosis; guidelines and reviews on use of EUS with or without FNA for investigation of PCLs; observational studies and systematic reviews describing the use of EUS and EUS-FNA for the management of PCL	RSY Tang
Surgical management and prognosis	Guidelines for PCL detection and diagnosis; observational studies of the outcomes of pancreatectomy in PCL patients	TT Cheung
Systemic management	Guidelines for management of pancreatic cancer; randomised clinical trials and observational studies of systemic treatments for pancreatic cancer	T Yau
Post-operative management and safety	Observational studies of outcomes post-pancreatectomy patients; guidelines for management of PCL and pancreatic insufficiency	KC Cheng
Diagnosis of PEI	Guidelines for management of PCL and PEI; reviews on the pathogenesis of PEI; studies reporting the performance of pancreatic function tests	WH She
Management of PEI	Guidelines and literature reviews on the management of PEI; studies of outcomes in patients with PEI treated with PERT; studies of patient-reported outcomes in patients with PEI	KSH Chok
Management of pancreatic endocrine insufficiency	Observational studies reporting diabetes onset post-pancreatectomy; guidelines for management of type 3c diabetes; clinical trials and observational studies of insulin replacement in patients with type 3c diabetes	WS Chow

PCL, pancreatic cystic lesion; EUS, endoscopic ultrasound; FNA, fine needle aspiration; PEI, pancreatic exocrine insufficiency; PERT, pancreatic enzyme replacement therapy.

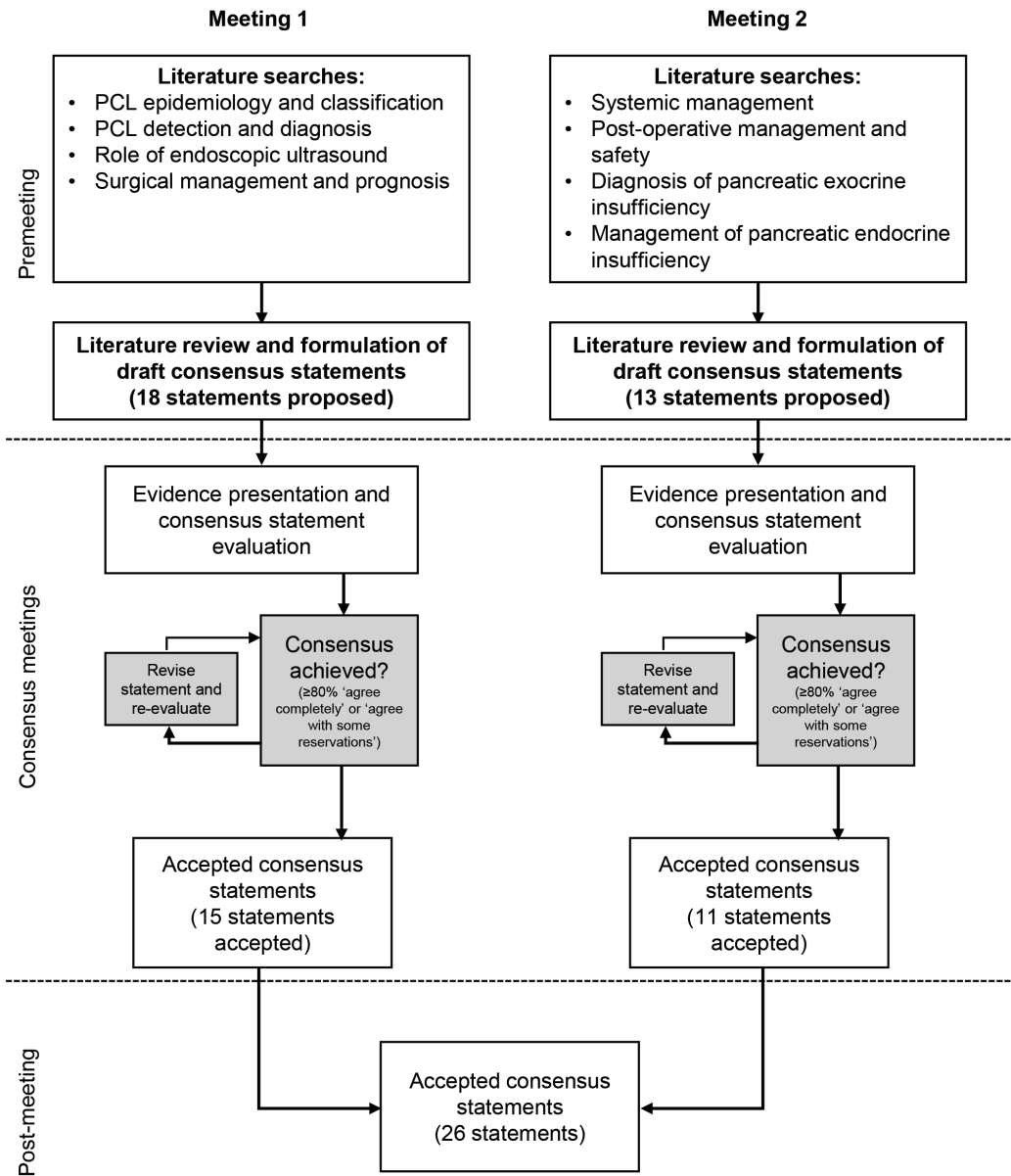


Figure S1 Flowchart of literature review and Delphi consensus process for meetings 1 and 2. PCL, pancreatic cystic lesions.