

Distribution of Propensity Scores

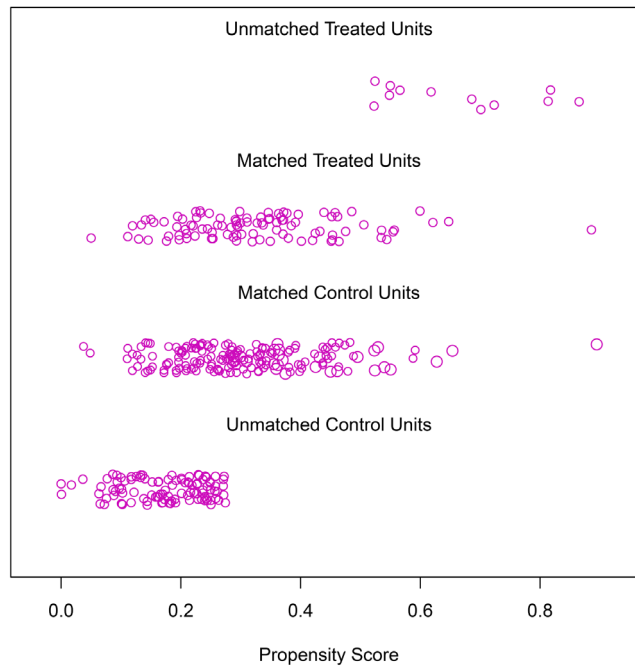


Figure S1 Jitter plot of the propensity score distribution after matching.

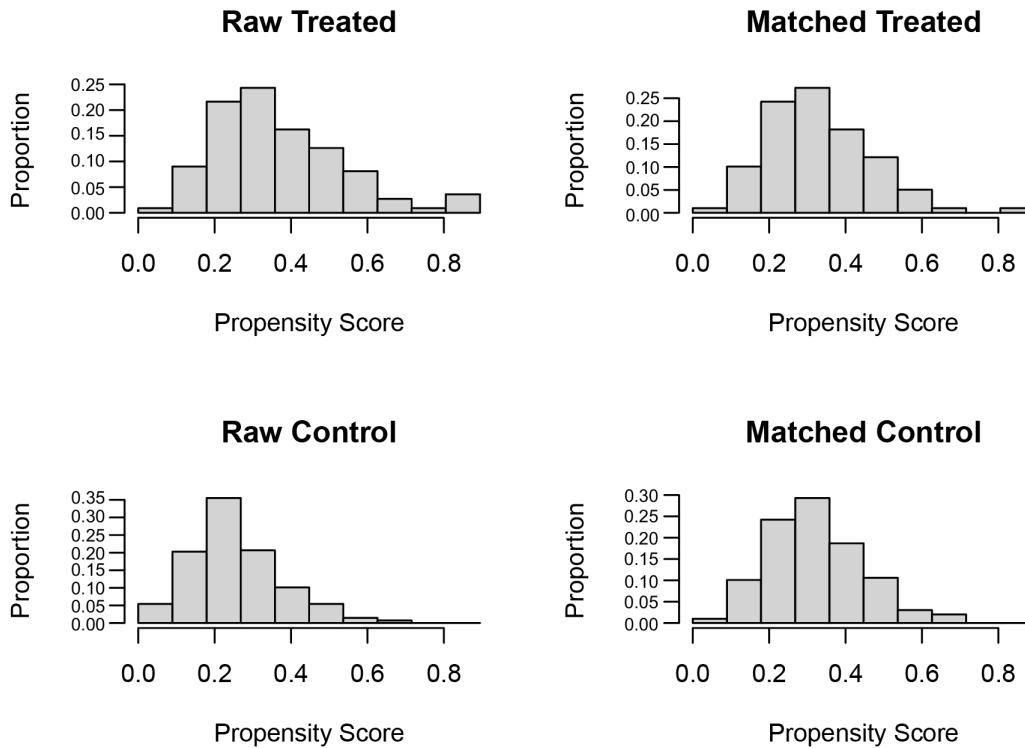


Figure S2 Histogram of the propensity score distribution after matching.

Table S1 Comparison of recurrence patterns between the adjuvant therapy and observation groups

Recurrence patterns	Total (n=155)	Adjuvant therapy group (n=32)	Observation group (n=123)	P value
Intrahepatic recurrence				0.847
No	32 (20.6)	7 (21.9)	25 (20.3)	
Yes	123 (79.4)	25 (78.1)	98 (79.7)	
PVTT				0.577
No	136 (87.7)	29 (90.6)	107 (87.0)	
Yes	19 (12.3)	3 (9.4)	16 (13.0)	
Extrahepatic metastasis				0.253
No	119 (76.8)	27 (84.4)	92 (74.8)	
Yes	36 (23.2)	5 (15.6)	31 (25.2)	

Data were presented as n (%). PVTT, portal vein tumor thrombosis.

Table S2 Antitumor treatments for recurrence in the adjuvant therapy and observation groups

Treatments	Adjuvant therapy group (n=32)	Observation group (n=123)
Re-hepatectomy	4 (12.5)	20 (16.3)
RFA	6 (18.7)	22 (17.9)
TACE	7 (21.9)	33 (26.8)
Systemic therapy	3 (10.8)	16 (13.0)
RFA + systemic therapy	4 (12.5)	12 (9.8)
TACE + systemic therapy	6 (18.7)	15 (12.2)
Best supportive care	2 (4.9)	5 (4.0)

Data were presented as n (%).

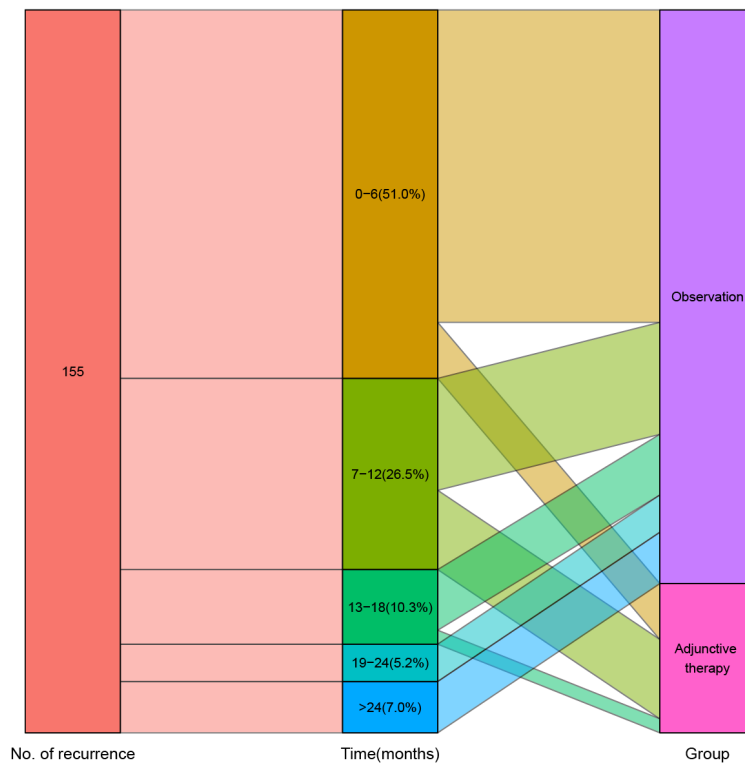


Figure S3 Sankey diagram of the proportions of recurrences in the 0–6 months, 7–12 months, 13–18 months, 19–24 months and >24 months for the adjuvant therapy group and the observation group.