

Figure S1 OS for patients with pancreatic cancer treated with nal-IRI + 5-FU/LV in 2nd line setting and after stratification based on history of prior gemcitabine-based treatment in 1st line. The difference in OS is not significant (P value =0.7684). OS, overall survival; nal-IRI, nano-liposomal irinotecan; 5-FU/LV, 5-fluorouracil/leucovorin.

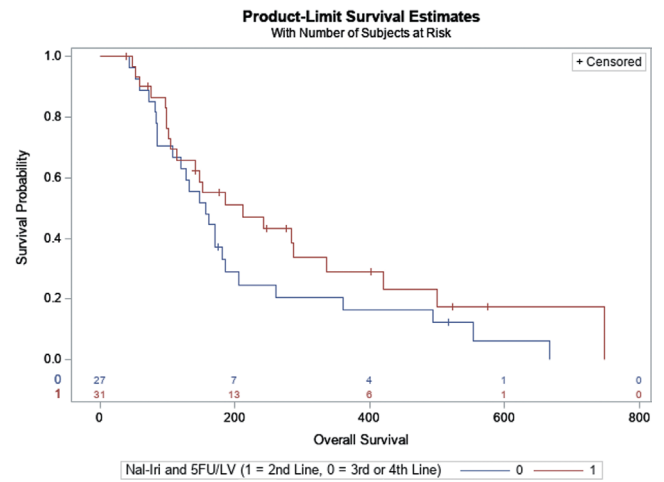


Figure S3 OS of patients with pancreatic cancer treated with nal-IRI + 5-FU/LV in 2nd line setting or beyond 2nd line setting. There is no significant difference in OS between the two groups (P value =0.1704). OS, overall survival; nal-IRI, nano-liposomal irinotecan; 5-FU/LV, 5-fluorouracil/leucovorin.

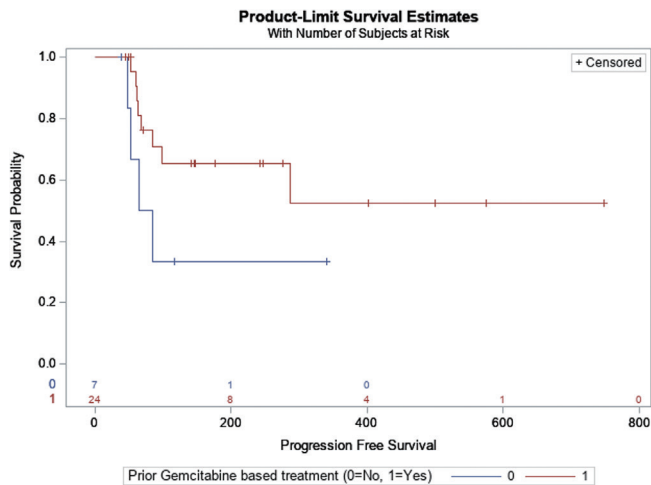


Figure S2 PFS for patients with pancreatic cancer treated with nal-IRI + 5-FU/LV in 2nd line setting and after stratification based on history of prior gemcitabine-based treatment in 1st line setting. The difference in PFS is not significant (P value =0.1341). PFS, progression-free survival; nal-IRI, nano-liposomal irinotecan; 5-FU/LV, 5-fluorouracil/leucovorin.

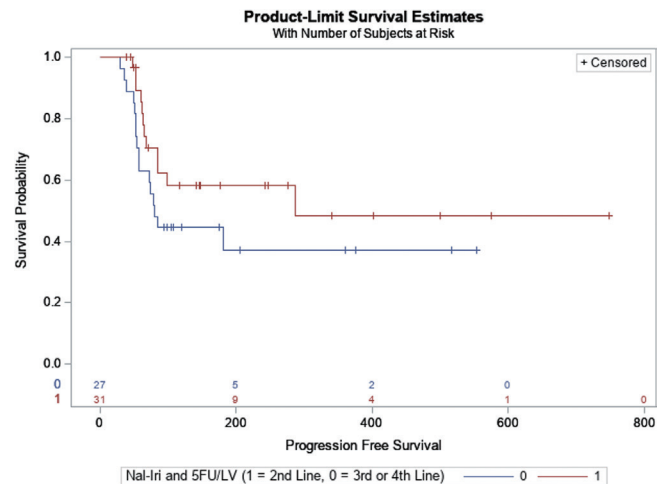


Figure S4 PFS of patients with pancreatic cancer treated with nal-IRI + 5-FU/LV in 2nd line setting or beyond 2nd line setting. There is no significant difference in PFS between the two groups (P value =0.1799). PFS, progression-free survival; nal-IRI, nano-liposomal irinotecan; 5-FU/LV, 5-fluorouracil/leucovorin.