

Table S1 Baseline characteristics for the propensity matched groups

Characteristics	Surgery refusal (n=565)		Definitive surgery (n=565)		P
	n	%	n	%	
Age, years					0.96
18–49	25	4	27	5	
50–69	199	35	198	35	
≥70	341	60	340	60	
Race					1.00
White	472	84	471	83	
Black	54	10	55	10	
Hispanic	18	3	17	3	
Other	21	4	22	4	
Insurance					0.99
Private	137	24	135	24	
No insurance	13	2	14	2	
Medicaid	21	4	23	4	
Medicare	394	70	393	70	
Geographical region					1.00
Northeast	126	22	126	22	
South	155	27	153	27	
Midwest	172	30	173	31	
West	112	20	113	20	
Distance from treatment facility, miles					0.96
<50	535	95	537	95	
50 to 200	26	5	24	4	
>200	4	1	4	1	
Year of diagnosis					1.00
2004	20	4	21	4	
2005	29	5	29	5	
2006	23	4	23	4	
2007	31	5	30	5	
2008	44	8	46	8	
2009	43	8	43	8	
2010	68	12	66	12	
2011	61	11	62	11	
2012	50	9	49	9	
2013	79	14	79	14	
2014	117	21	117	21	
Clinical T stage					1.00
cT1	5	1	5	1	
cT2	47	8	46	8	
cT3	490	87	491	87	
cT4	23	4	23	4	
Tumor size, cm					1.00
≤2.0	44	8	43	8	
2.1–5.0	365	65	364	64	
5.1–10.0	152	27	154	27	
>10.0	4	1	4	1	
Radiotherapy dose, cGy					0.99
≤5,040	470	83	469	83	
5,041–5,400	38	7	39	7	
>5,400	57	10	57	10	
Treatment					1.00
No chemotherapy or radiotherapy	89	16	90	16	
Radiotherapy alone	17	3	17	3	
Chemotherapy alone	9	2	9	2	
Chemotherapy and radiotherapy	450	80	449	79	

n, number of patients; T, tumor; c, clinical; cm, centimeter; cGy, centigray.

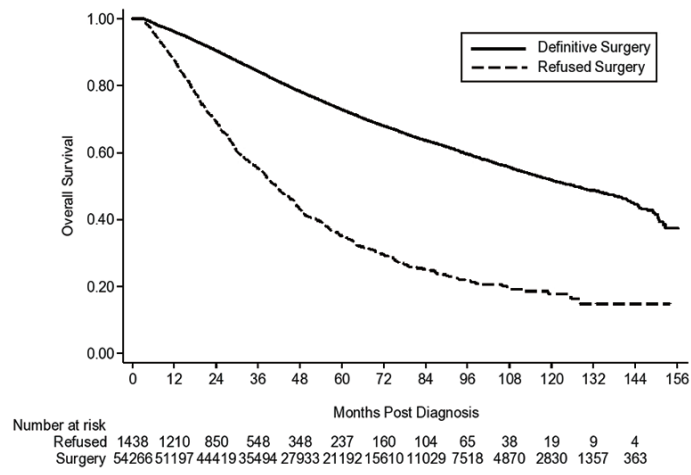


Figure S1 Survival curve comparing patients who received definitive surgery versus patients who refused surgery.