

Figure S1 Co-localization of Lnc *AC011632.1* and IGF2BP1 in CRC tissues (Tumors 1-3) detected by fluorescence in situ hybridization combined with immunofluorescence. CRC, colorectal cancer.

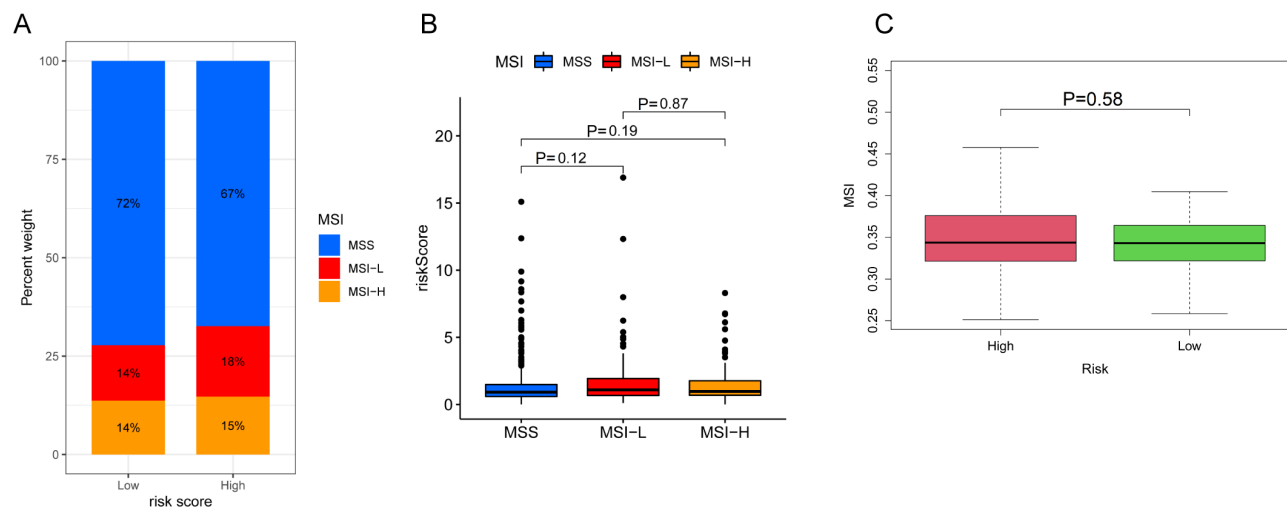


Figure S2 The relationships between HRG and LRG regarding microsatellite instability status. (A) The proportion of MSI subtypes in the HRG and LRG. (B) Risk scores among the different MSI types. (C) Analysis to compare MSI risk scores between the HRG and LRG. MSI, microsatellite instability; MSS, microsatellite stable; HRG, high-risk group; LRG, low-risk group.