

Table S1 Evaluation of the reproducibility of FR-CTC detection results

No.	Initial measurement (A)	Repeat measurement (B)	Standard deviation (SD)	Coefficient of variation (CV %)
1	9.7	9.8	0.071	0.73%
2	11.0	10.9	0.071	0.65%
3	12.5	12.8	0.212	1.68%
4	12.2	12.2	0.000	0.00%
5	13.0	13.2	0.141	1.08%
6	12.0	12.2	0.141	1.17%
7	11.7	11.9	0.141	1.20%

FR-CTC, folate receptor-positive circulating tumor cell.

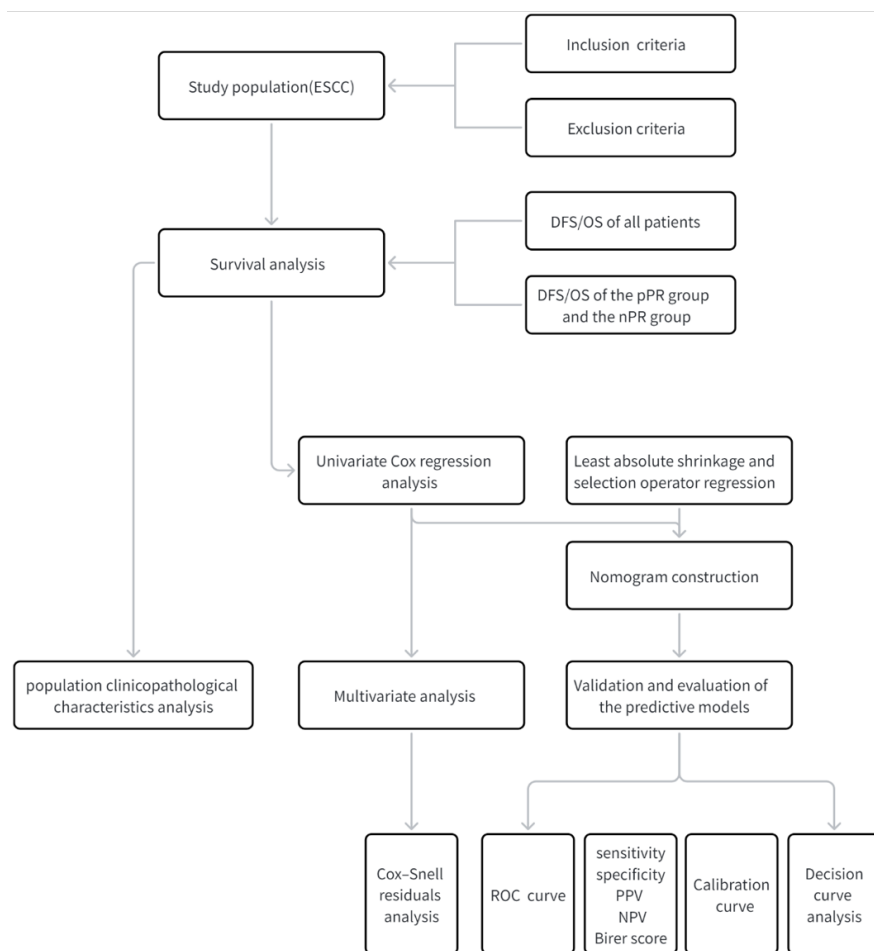


Figure S1 Flow diagram of patient selection through the study. DFS, disease-free survival; ESCC, esophageal squamous cell carcinoma; NPV, negative predictive value; OS, overall survival; PPV, positive predictive value; ROC, receiver operating characteristic.

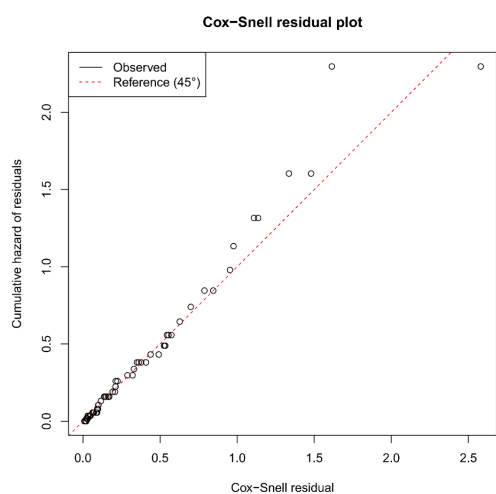


Table S2 Multicollinearity test among variables of multivariable Cox models

Variable	Tolerance	VIF
Albumin	0.896	1.116
T	0.461	2.167
pTNM	0.724	1.381
TRG grade	0.494	2.023
Baseline CTC	0.891	1.122

CTC, circulating tumor cell; pTNM, pathological tumor node metastasis classification; TRG, tumor regression grade; VIF, variance inflation factor.

Figure S2 Cox-Snell residual plot for the Cox proportional hazards model. The dashed line represents the reference line ($y = x$).

Table S3 Diagnostic performance of the nomogram for predicting postoperative recurrence at 1-, 2-, and 3-year after nICT

Time	Cut-off value	Sensitivity	Specificity	PPV	NPV	Brier score
1-year	0.08	1.00	0.85	0.31	1.00	0.05
2-year	0.34	0.89	0.76	0.70	0.92	0.14
3-year	0.82	0.44	1.00	1.00	0.24	0.17

nICT, neoadjuvant immunochemotherapy; NPV, negative predictive value; PPV, positive predictive value.

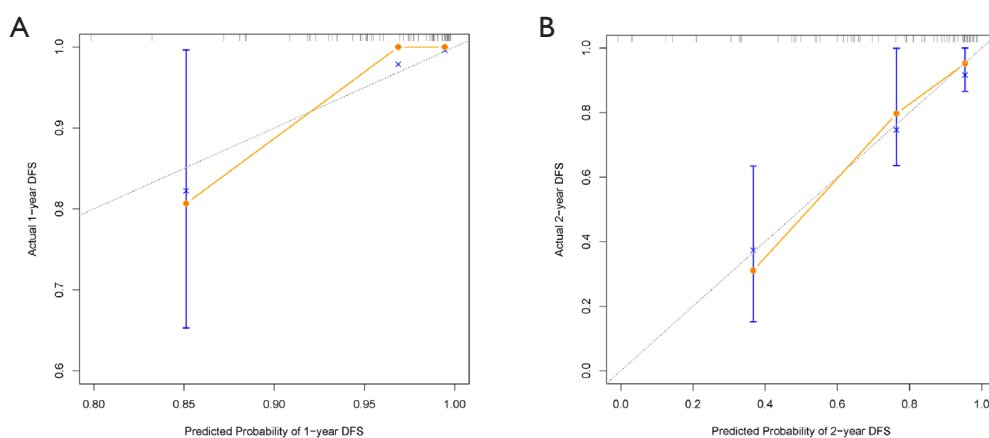


Figure S3 Model calibration curves. (A) Calibration curve of the model for 1-year DFS. (B) Calibration curve of the model for 2-year DFS. DFS, disease-free survival.