

Figure S1 Flowchart of selection of patients with EGCC and EGNCC using the SEER database. EGC, early gastric cancer; EGCC, early gastric cardia cancer; EGNCC, early gastric non-cardia cancer; SEER, Surveillance, Epidemiology, and End Results.

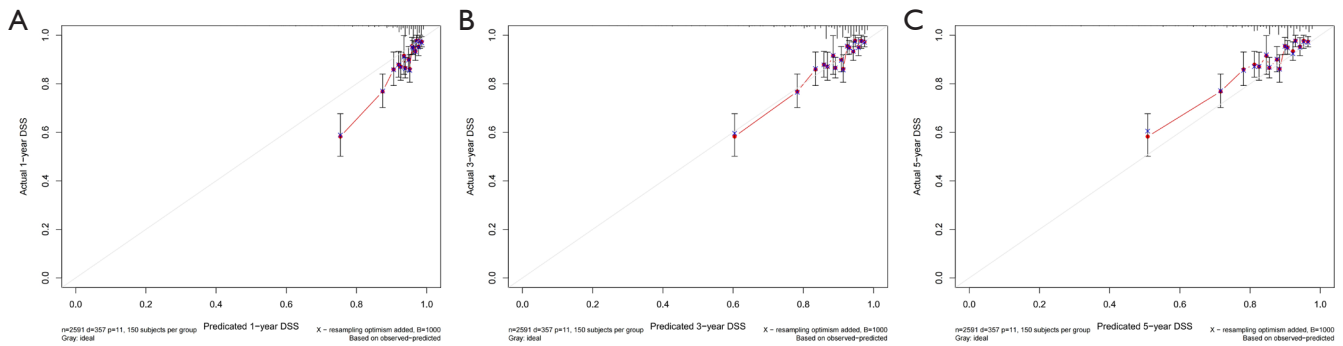


Figure S2 The 1,000 bootstrap resampling internal verification correction for the nomogram of (A) 1-year DSS, (B) 3-year DSS, and (C) 5-year DSS in EGC patients. DSS, disease-specific survival; EGC, early gastric cancer.

	early gastric cardia cancer (N=528)	early gastric non-cardia cancer (N=528)	Overall (N=1056)	P-value
Sex				
Female	137 (25.9%)	131 (24.8%)	268 (25.4%)	0.914
Male	391 (74.1%)	397 (75.2%)	788 (74.6%)	
Race				
Black	22 (4.2%)	31 (5.9%)	53 (5.0%)	0.754
White	453 (85.8%)	450 (85.2%)	903 (85.5%)	
Others	53 (10.0%)	47 (8.9%)	100 (9.5%)	
Age				
18-60 years	141 (26.7%)	163 (30.9%)	304 (28.8%)	0.327
60+ years	387 (73.3%)	365 (69.1%)	752 (71.2%)	
Year.of.diagnosis				
2004-2009	280 (53.0%)	256 (48.5%)	536 (50.8%)	0.336
2010-2015	248 (47.0%)	272 (51.5%)	520 (49.2%)	
Cell.type				
Intestinal type	441 (83.5%)	407 (77.1%)	848 (80.3%)	0.134
Diffuse type	51 (9.7%)	68 (12.9%)	119 (11.3%)	
Others	36 (6.8%)	53 (10.0%)	89 (8.4%)	
Grade				
Well/moderately differentiated	301 (57.0%)	282 (53.4%)	583 (55.2%)	0.834
Poorly differentiated/undifferentiated	194 (36.7%)	208 (39.4%)	402 (38.1%)	
Unknown	33 (6.3%)	38 (7.2%)	71 (6.7%)	
Depth				
T1a	228 (43.2%)	217 (41.1%)	445 (42.1%)	0.791
T1b	300 (56.8%)	311 (58.9%)	611 (57.9%)	
Lymph.node.metastasis				
N0	483 (91.5%)	473 (89.6%)	956 (90.5%)	0.96
N1	40 (7.6%)	47 (8.9%)	87 (8.2%)	
N2	4 (0.8%)	7 (1.3%)	11 (1.0%)	
N3	1 (0.2%)	1 (0.2%)	2 (0.2%)	
Size				
≤2	294 (55.7%)	287 (54.4%)	581 (55.0%)	0.998
2 ~ 5	154 (29.2%)	157 (29.7%)	311 (29.5%)	
≥5	19 (3.6%)	23 (4.4%)	42 (4.0%)	
Unknown	61 (11.6%)	61 (11.6%)	122 (11.6%)	
Examined.lymph.nodes				
< 15	321 (60.8%)	313 (59.3%)	634 (60.0%)	0.881
≥15	207 (39.2%)	215 (40.7%)	422 (40.0%)	
Lymph.node.dissection				
negative	483 (91.5%)	473 (89.6%)	956 (90.5%)	0.576
positive	45 (8.5%)	55 (10.4%)	100 (9.5%)	

Figure S3 Patient baseline demographics and pathological characteristics of EGCC and EGNCC after PSM. EGCC, early gastric cardia cancer; EGNCC, early gastric non-cardia cancer; PSM, propensity score matching.

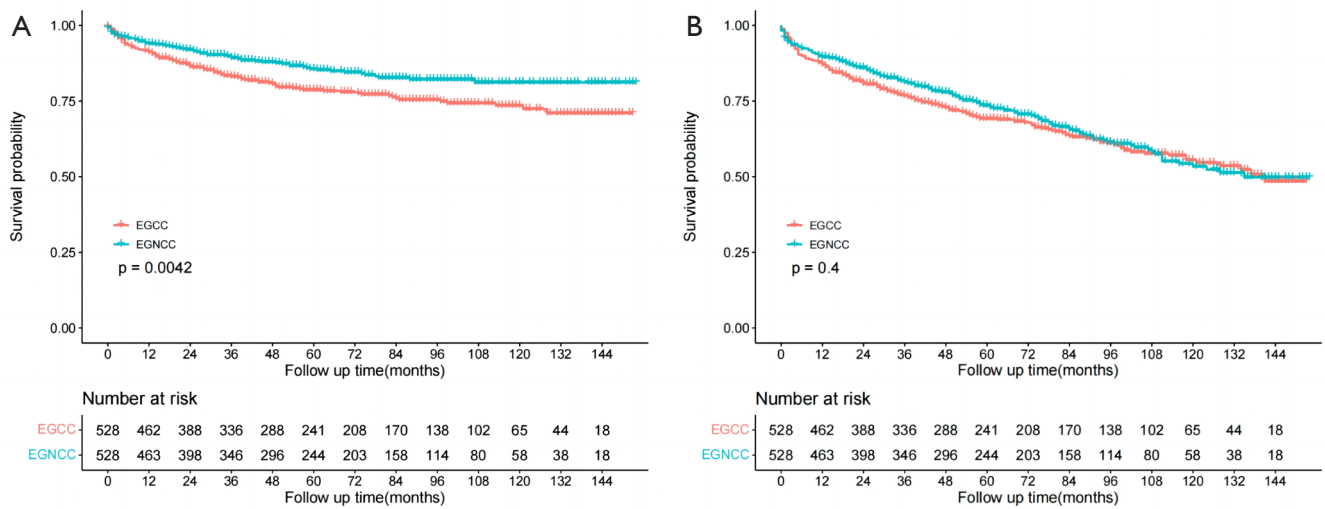


Figure S4 Comparison of survival between EGCC and EGNCC patients after PSM. (A) DSS for patients with EGCC and EGNCC after PSM. (B) OS for patients with EGCC and EGNCC after PSM. DSS, disease-specific survival; EGCC, early gastric cardia cancer; EGNCC, early gastric non-cardia cancer; OS, overall survival; PSM, propensity score matching.