

**Table S1** Clinicopathological features of 20 CRC patients

Patient number	Age (years)	Gender	Type	T (depth of invasion)	N (lymph node metastasis)	M (distant metastasis)
P1	62	Male	Colon	3	1	0
P2	56	Male	Colon	4b	1	1
P3	73	Male	Colon	3	0	0
P4	74	Male	Colon	1	0	0
P5	46	Male	Colon	3	0	0
P6	84	Male	Colon	4a	1	0
P7	70	Male	Colon	3	1	0
P8	73	Female	Rectum	3	1	0
P9	66	Female	Colon	4a	1	0
P10	70	Female	Colon	3	0	0
P11	78	Male	Colon	3	0	0
P12	62	Male	Colon	4a	1	0
P13	57	Male	Colon	4a	0	0
P14	66	Male	Rectum	3	1	1
P15	69	Male	Colon	3	0	0
P16	75	Female	Colon	4a	1	0
P17	70	Male	Colon	3	0	0
P18	59	Male	Colon	3	1	0
P19	65	Male	Rectum	3	0	0
P20	83	Male	Rectum	3	0	0

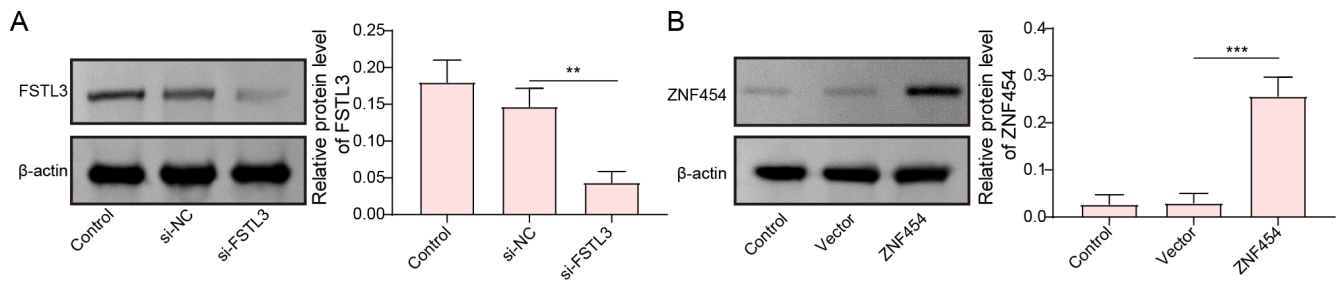
**Table S2** Clinical characteristics of CRC patients

Variables	N of cases	FSTAL3	
		Low	High
Gender			
Male	16	7	9
Female	4	2	2
Age*			
>67.9	11	4	7
<67.9	9	5	4
Depth of invasion			
T1/T2	1	1	0
T3/T4	19	8	11
Lymph node metastasis			
Yes	10	6	4
No	10	3	7
TNM stage			
I/II	10	3	7
III/IV	10	6	4

Age: cutoff at mean age (67.9 years).

**Table S3** Nucleotide sequences of primers used for RT-qPCR

Gene	Forward (5'-3')	Reverse (5'-3')
<i>FSTL3</i>	CTACATCTCCTCGTGCCACA	TCTTCTGCAGACTCACCACCT
<i>ZNF454</i>	GGGAGGTTAGTTTAGGGGAG	TTCTATTACCTTCCAAACCTTTT
<i>HIF-1<math>\alpha</math></i>	GGATGATGACTTCCAGTTACG	CTGTGCTTTGAGGACTTGC
<i>GLUT1</i>	TTGCAGGCTTCTCCAACCTGGAC	CAGAACCAGGAGCACAGTGAAG
<i>HK2</i>	GAGTTTGACCTGGATGTGGTTGC	CCTCCATGTAGCAGGCATTGCT
<i>LDHA</i>	GGATCTCCAACATGGCAGCCTT	AGACGGCTTTCTCCCTCTTGCT
<i>PKM2</i>	GACTGCCTTCATTGAGACCCA	GGGTGGTGAATCAATGTCCAG
<i>GAPDH</i>	GAGTCAACGGATTGGTCGT	GACAAGCTTCCCCTTCTCAG



**Figure S1** Verification of the transfection efficiency of siRNA and plasmid. (A) Cells were transfected with negative control siRNA (si-NC) or FSTL3 siRNA (si-FSTL3), and then the expression of FSTL3 was detected by Western blot. (B) Cells were transfected with empty plasmid or ZNF454 overexpression plasmid, and then the expression of ZNF454 was detected by Western blot. The values were expressed as the means  $\pm$  SD (each experiment was repeated three independent times). \*\*,  $P < 0.01$ ; \*\*\*,  $P < 0.001$ .