

Figure S1 The expression and prognostic value of 10 hub genes in PAAD. (A) Heatmap representation of the correlation between *TNFRSF6B* expression and 10 hub genes. Red color represents positive correlation and blue color represents negative correlation; (B) the expression of 10 hub genes (*S100A11*, *GJB3*, *TACSTD2*, *KRT7*, *KCNN4*, *CAPG*, *ITGB4*, *LAMB3*, *SFN*, *KRT19*) in PAAD; (C) the overall survival curve of *S100A11*, *GJB3*, *TACSTD2*, *KRT7*, *KCNN4*, *CAPG*, *ITGB4*, *LAMB3*, *SFN*, *KRT19*. PAAD, pancreatic adenocarcinoma.

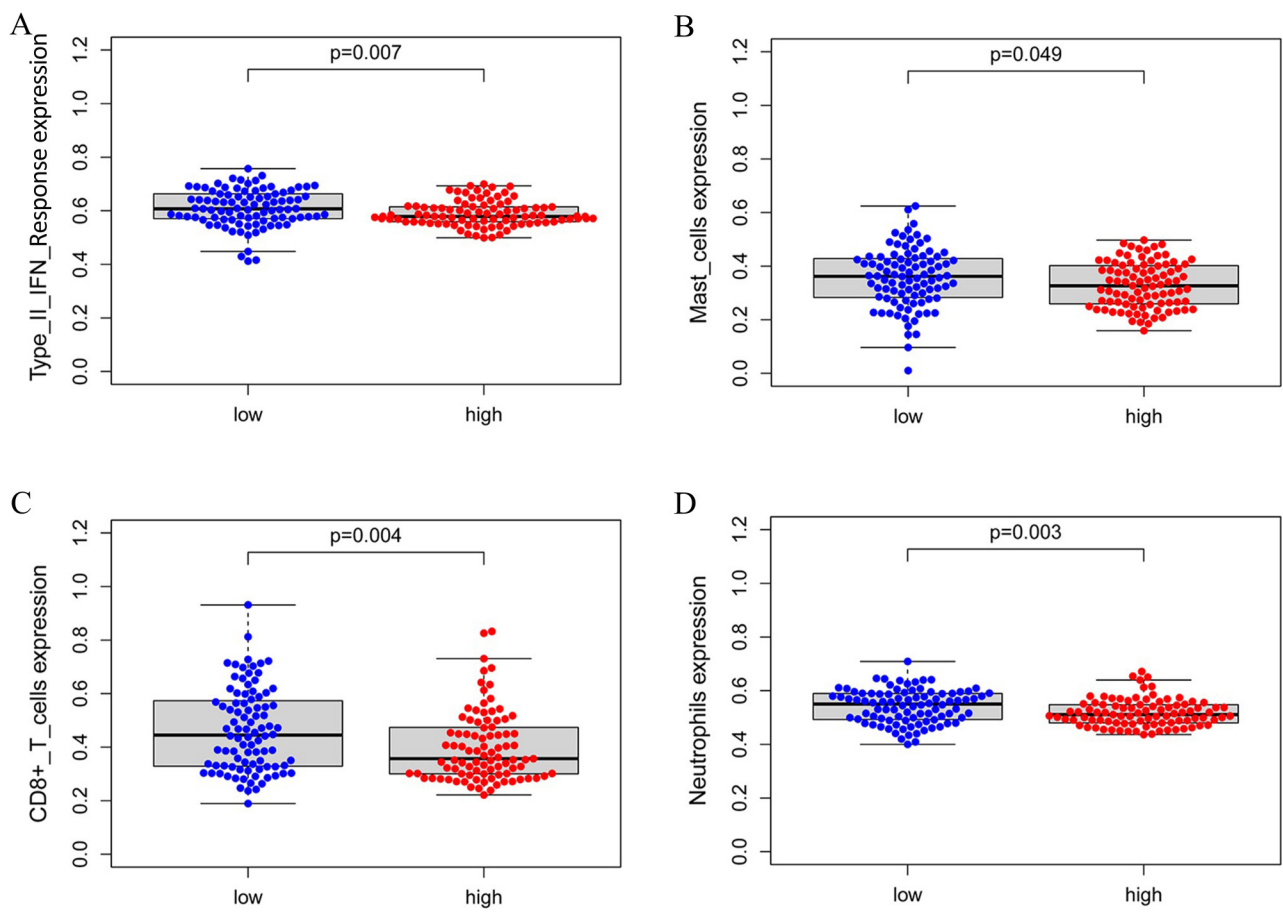


Figure S2 Associations between *TNFRSF6B* gene expressions and immune cells in PAAD. *TNFRSF6B* has a negative correlation with Type-II INF-Response (A), mast cells (B), CD8(+) T cell (C) and neutrophils (D). *TNFRSF6B*, tumor necrosis factor receptor superfamily member 6b; PAAD, pancreatic adenocarcinoma; INF, interferon.

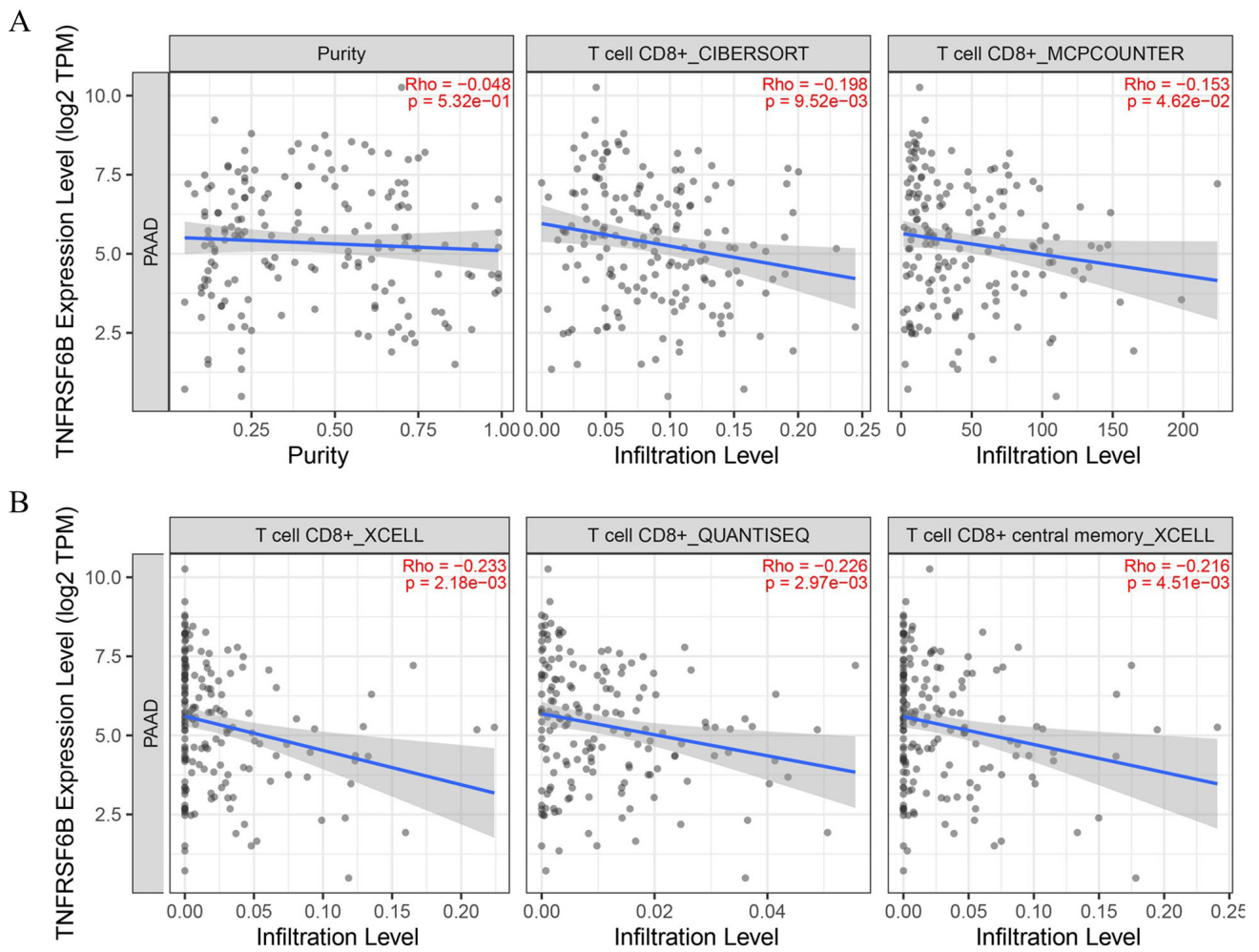


Figure S3 Correlation between *TNFRSF6B* expression and CD8(+) T cell in PAAD. *TNFRSF6B* was negatively correlated with CD8(+) T cell. *TNFRSF6B*, tumor necrosis factor receptor superfamily member 6b; PAAD, pancreatic adenocarcinoma.