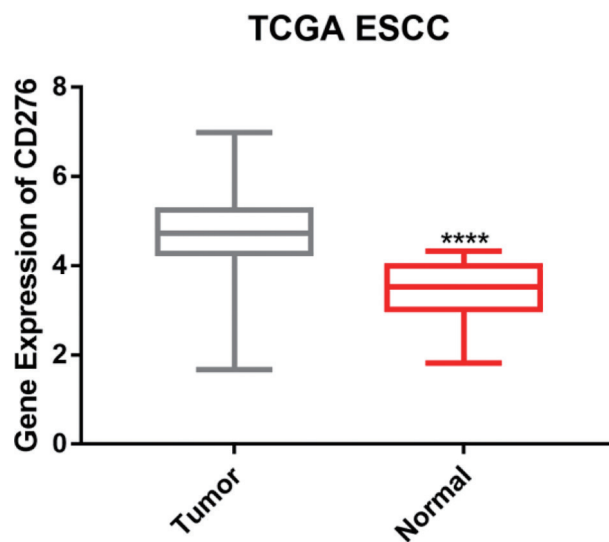
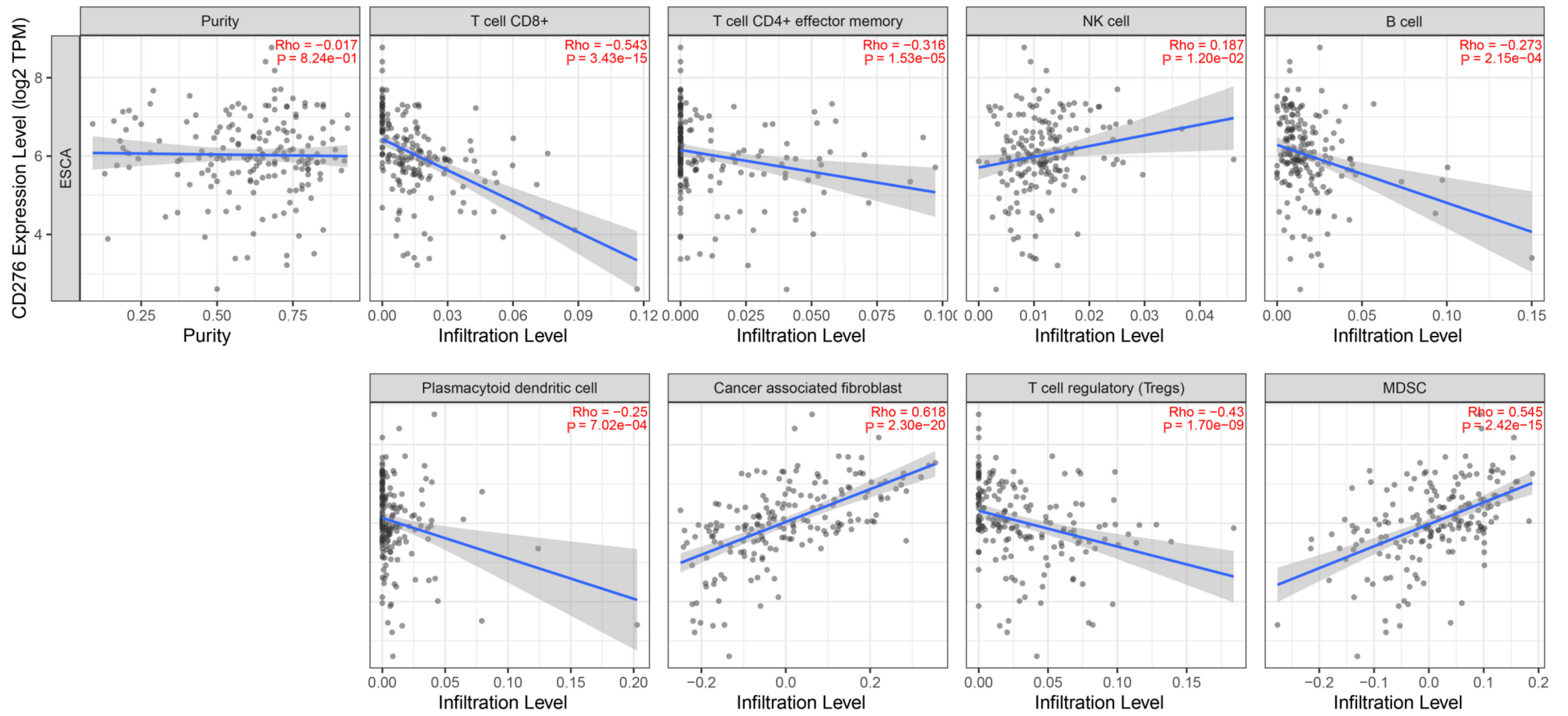


**Table S1** Primers used for qRT-PCT

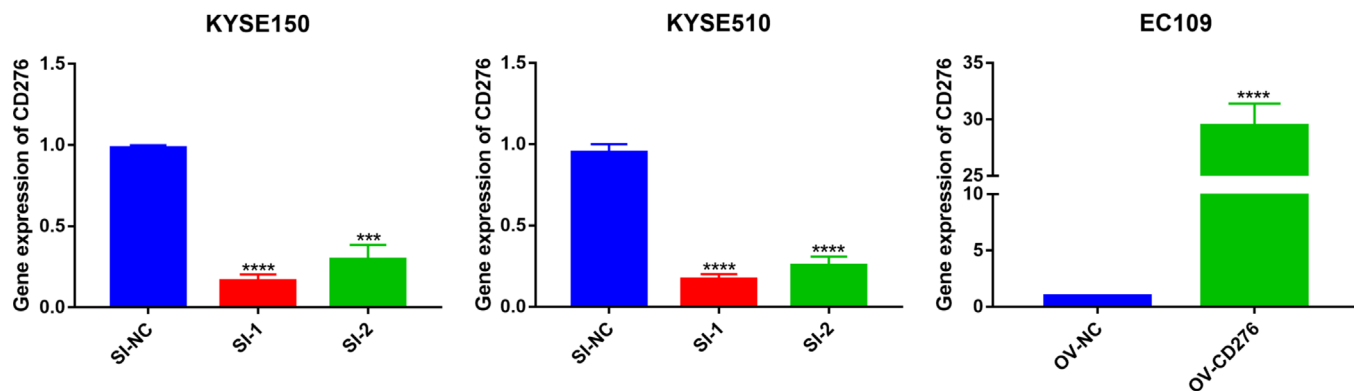
Gene	Forward (5'-3')	Reverse (5'-3')
<i>CD276</i>	CTG GCTTTCGTGTGCTGGAGAA	GCTG TCAGAGTGTTTCAGAGGC
<i>GAPDH</i>	CTGGGCTACACTGAGCACC	AAGTGGTCGTTGAGGGCAATG
<i>PKM2</i>	ATGTGGAAGCCCCATAGTGAA	TGGGTGGTGAATCAATGTCCA
<i>MKI67</i>	CTGACCCTGATGAGAGTGAGGGA	ACTCTGTAGGGTCGAGCAGG
<i>CD3D</i>	ACTGGCTACCCTTCTCTCG	CCGTTCCCTCTACCCATGTGA
<i>CD8A</i>	ATGGCCTTACCAGTGACCG	AGGTTCCAGGTCCGATCCAG
<i>GZMB</i>	CCCTGGGAAAACACTCACACA	GCACAACCTCAATGGTACTGTCTG
<i>CD69</i>	ATTGTCCAGGCCAATACACATT	CCTCTCTACCTGCGTATCGTTTT
<i>TIM3</i>	CTGCTGCTACTACTTACAAGGTC	GCAGGGCAGATAGGCATTCT
<i>HK1</i>	GCTCTCCGATGAAACTCTCATAG	GGACCTTACGAATGTTGGCAA
<i>HK2</i>	GAGCCACCACTCACCCCTACT	CCAGGCATTCGGAATGTG
<i>PFKP</i>	GCATGGGTATCTACGTGGGG	CTCTGCGATGTTTGAGCCTC
<i>PFKM</i>	GGTGCCCGTGTCTTCTTTGT	AAGCATCATCGAAACGCTCTC
<i>PFKL</i>	GCTGGGCGGCACTATCATT	TCAGGTGCGAGTAGGTCCG
<i>PDK1</i>	CTGTGATACGGATCAGAAACCG	TCCACCAAACAATAAAGAGTGCT
<i>PDK2</i>	ATGAAAGAGATCAACCTGCTTCC	GGCTCTGGACATACCAGCTC
<i>PDK3</i>	CGCTCTCCATCAAACAATTCT	CCACTGAAGGGCGGTTAAGTA



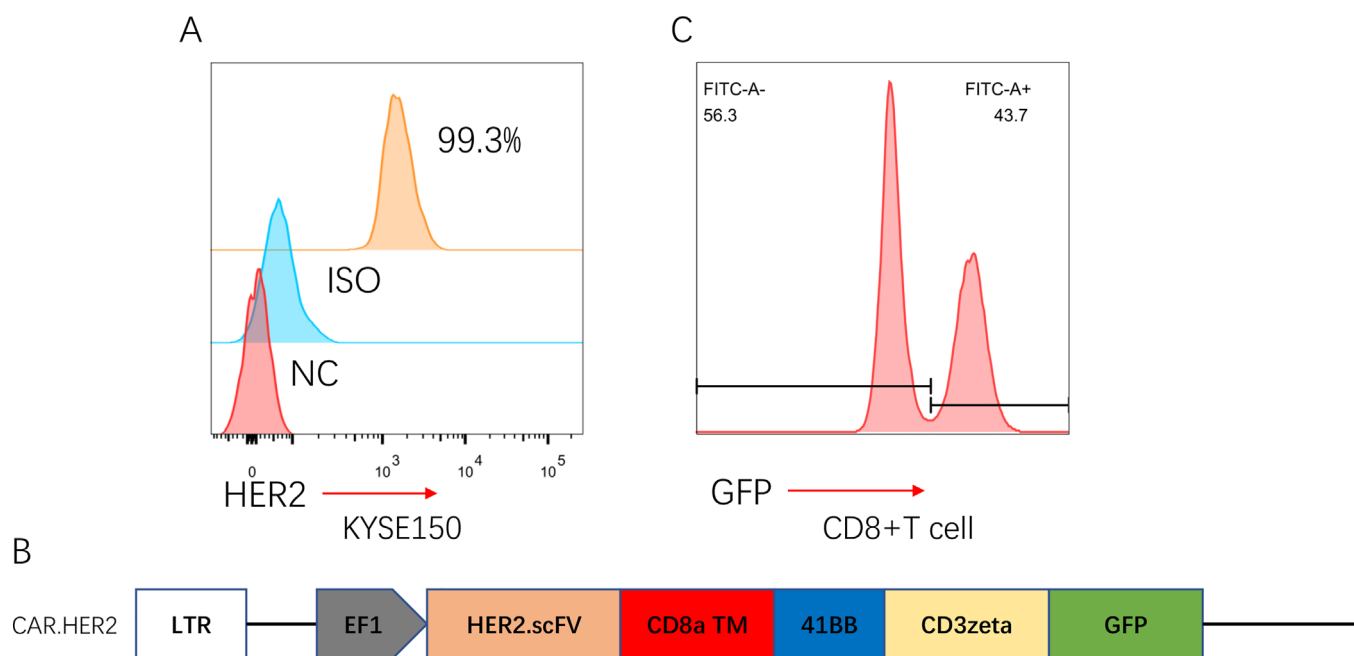
**Figure S1** Relative levels of CD276 expression in ESCC and normal tissues from TCGA data were analyzed. \*\*\*\*P<0.0001. ESCC, esophageal squamous cell carcinoma.



**Figure S2** The correlation between CD276 expression and immune cell infiltration was analyzed by TIMER2.0.



**Figure S3** Efficiency of CD276 knockdown and overexpression in ESCC cell lines. ESCC, esophageal squamous cell carcinoma. \*\*\*\* $P < 0.0001$ , \*\*\* $P < 0.001$ .



**Figure S4** Antigen detection and construction of CAR T cells. (A) Expression of HER2 in the KYSE150 cell line. (B) Schematic representation of the retroviral vector encoding CAR-HER2. (C) Flow cytometry histograms showing CAR-HER2 expression in activated T cells. CAR-T, chimeric antigen receptor T cell.