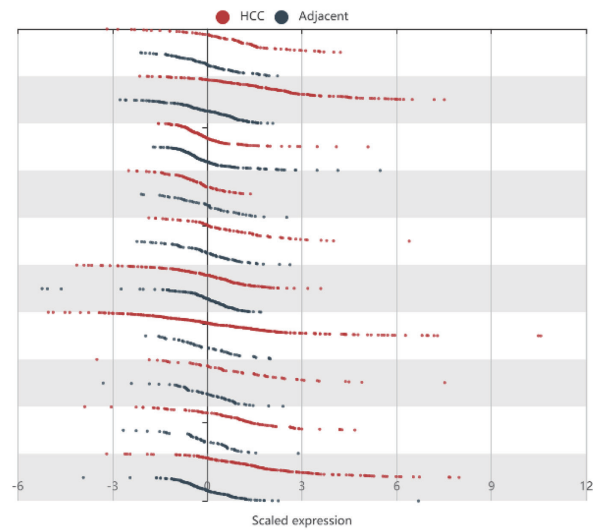


A

Dataset	P-value	Type	Nums	Mean	STD	IQR
HCCDB1	0.0000139	HCC	100	8.411	0.4455	0.4509
		Adjacent	97	8.17	0.2993	0.4155
HCCDB4	3.40E-34	HCC	240	8.774	0.5151	0.6367
		Adjacent	193	8.253	0.2734	0.3897
HCCDB6	0.7408	HCC	225	3.938	0.2897	0.27
		Adjacent	220	3.948	0.3188	0.2712
HCCDB11	0.03127	HCC	88	8.145	0.517	0.5862
		Adjacent	48	8.382	0.6427	0.8765
HCCDB12	0.0000684	HCC	81	12.55	0.485	0.561
		Adjacent	80	12.28	0.3293	0.4637
HCCDB13	0.8341	HCC	228	7.387	0.71	0.816
		Adjacent	168	7.374	0.5353	0.482
HCCDB15	0.02363	HCC	351	10.07	0.6165	0.745
		Adjacent	49	9.959	0.2662	0.38
HCCDB16	0.0004337	HCC	60	7.862	0.4071	0.471
		Adjacent	60	7.644	0.2173	0.2929
HCCDB17	0.0000915	HCC	115	10.08	0.559	0.6525
		Adjacent	52	9.789	0.3682	0.4213
HCCDB18	5.59E-23	HCC	212	5.512	0.6093	0.7225
		Adjacent	177	5	0.311	0.38



B

Tissues	Staining	HPA065931
HCC	High	2
	Medium	2
	Low	2
	Not detected	6
Liver	Not detected	3

C

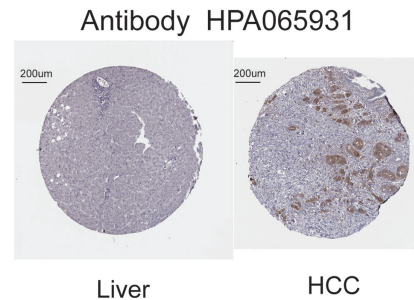


Figure S1 The expression level of RANBP1 in HCC. (A) Chart and plot showing the expression of RANBP1 in tumor tissues and the adjacent normal tissues, according to *t*-test using the Integrative Molecular Database for Hepatocellular Carcinoma (HCCDB). (B) The protein expression of RANBP1 in HCC from the HPA. (C) Distribution of RANBP1 in HCC. The staining method was immunohistochemistry staining (200 µm). Color images are available online (Open access and available on the Human Protein Atlas: https://images.proteinatlas.org/65931/162102_A_8_4_medium.jpg; https://images.proteinatlas.org/65931/162101_B_9_3.jpg). RANBP1, Ran-specific binding protein 1; HCC, hepatocellular carcinoma; HPA, Human Protein Atlas.

Table S1 Univariate and multivariate Cox proportional hazards analysis of RANBP1 expression and progress-free interval for patients with HCC in The Cancer Genome Atlas cohort

Characteristics	Univariate analysis		Multivariate analysis	
	HR (95% CI)	P	HR (95% CI)	P
T stage (T2 & T3 & T4 vs. T1)	2.384 (1.757–3.235)	<0.001	0.700 (0.092–5.335)	0.730
N stage (N1 vs. N0)	1.385 (0.342–5.611)	0.648		
M stage (M1 vs. M0)	3.442 (1.080–10.967)	0.037	2.272 (0.671–7.692)	0.187
Pathologic stage (stage II & stage III & stage IV vs. stage I)	2.310 (1.683–3.170)	<0.001	1.448 (0.191–10.968)	0.720
Histologic grade (G3&G4 vs. G1&G2)	1.154 (0.852–1.564)	0.354		
Residual tumor (R1&R2 vs. R0)	1.515 (0.841–2.730)	0.167		
Age (>60 vs. ≤60)	0.952 (0.710–1.275)	0.740		
Gender (male vs. female)	0.973 (0.713–1.327)	0.861		
Race (white vs. Asian & black or African American)	1.328 (0.984–1.792)	0.063	0.762 (0.492–1.179)	0.223
Child–Pugh grade (B&C vs. A)	1.389 (0.761–2.534)	0.285		
Fibrosis Ishak score (1/2 & 3/4 & 5/6 vs. 0)	1.369 (0.910–2.061)	0.132		
Adjacent hepatic tissue inflammation (mild & severe vs. none)	1.238 (0.863–1.776)	0.246		
Vascular invasion (yes vs. no)	1.682 (1.196–2.364)	0.003	1.631 (1.000–2.658)	0.050
RANBP1 (high vs. low)	1.578 (1.175–2.118)	0.002	1.805 (1.187–2.744)	0.006

CI, confidence interval; HR, hazard ratio; RANBP1, Ran-specific binding protein 1.

Table S2 Univariate and multivariate Cox proportional hazards analysis of RANBP1 expression and DSS for patients with HCC in TCGA cohort

Characteristics	Univariate analysis		Multivariate analysis	
	HR (95% CI)	P	HR (95% CI)	P
T stage (T2&T3&T4 vs. T1)	2.807 (1.733–4.546)	<0.001	1.857 (0.757–4.557)	0.176
N stage (N1 vs. N0)	3.562 (0.858–14.785)	0.080	1.010 (0.098–10.360)	0.993
M stage (M1 vs. M0)	5.102 (1.230–21.161)	0.025	4.563 (0.858–24.277)	0.075
Pathologic stage (stage II & stage III & stage IV vs. stage I)	2.887 (1.705–4.888)	<0.001	1.289 (0.142–11.687)	0.821
Histologic grade (G3 & G4 vs. G1 & G2)	1.119 (0.703–1.780)	0.636		
Residual tumor (R1 & R2 vs. R0)	1.640 (0.711–3.782)	0.246		
Age (>60 vs. ≤60)	0.880 (0.566–1.370)	0.573		
Gender (male vs. female)	0.840 (0.533–1.323)	0.452		
Race (white vs. Asian & black or African American)	1.520 (0.947–2.438)	0.083	2.266 (0.561–9.149)	0.250
Child–Pugh grade (B & C vs. A)	2.512 (1.103–5.724)	0.028	4.708 (1.405–15.778)	0.012
Fibrosis Ishak score (1/2 & 3/4 & 5/6 vs. 0)	0.921 (0.478–1.774)	0.806		
Adjacent hepatic tissue inflammation (mild & severe vs. none)	1.446 (0.791–2.645)	0.231		
Vascular invasion (yes vs. no)	1.284 (0.710–2.319)	0.408		
RANBP1 (high vs. low)	2.123 (1.341–3.360)	0.001	2.852 (1.178–6.903)	0.020

CI, confidence interval; HR, hazard ratio.