

Figure S1 Progression-free survival (A) and Overall survival (B) for all patients undergoing esophagectomy. IC-CRT, induction chemotherapy and chemoradiation; CRT, chemoradiation.

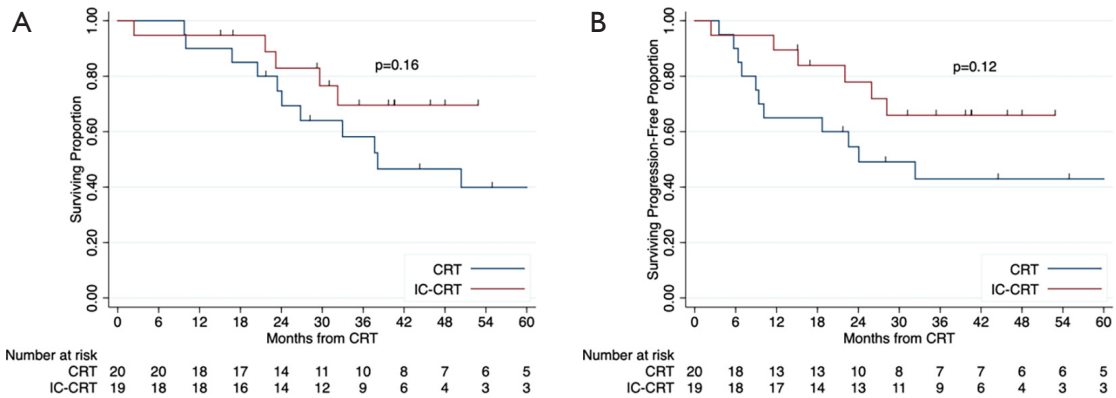


Figure S2 Progression-free survival (A) and Overall survival (B) for patients with adenocarcinoma that received 3 cycles of induction FOLFOX, CRT and esophagectomy versus CRT and esophagectomy. IC-CRT, induction chemotherapy and chemoradiation; CRT, chemoradiation.

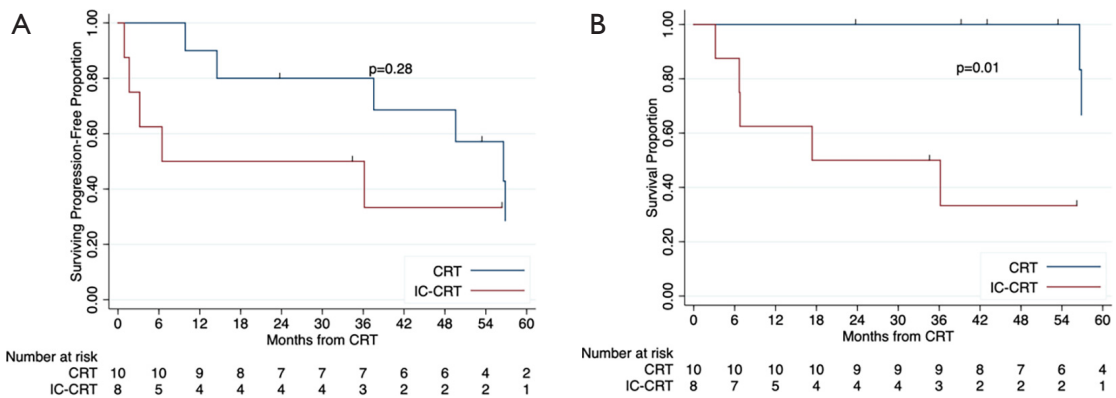


Figure S3 Progression-free survival (A) and Overall survival (B) for patients with squamous cell carcinoma. IC-CRT, induction chemotherapy and chemoradiation; CRT, chemoradiation.

Table S1 Univariate associates with progression-free survival (PFS) and overall survival (OS)

	PFS	P value	OS	P value
Age				
≤60	Reference		Reference	
61–70	0.96 [0.48, 1.94]	0.91	1.16 [0.54, 2.49]	0.71
>70	0.92 [0.44, 1.94]	0.83	1.06 [0.46, 2.44]	0.88
Sex				
Male	Reference		Reference	
Female	0.83 [0.41, 1.70]	0.61	1.11 [0.54, 2.30]	0.77
Race				
White	Reference		Reference	
AA/others	0.72 [0.23, 2.31]	0.59	0.64 [0.15, 2.64]	0.54
Ethnicity*				
	–		–	
Smoking				
Never	Reference		Reference	
Former	1.22 [0.64, 2.32]	0.54	1.18 [0.59, 2.37]	0.64
Current	1.11 [0.49– 2.53]	0.81	1.17 [0.47, 2.92]	0.74
Alcohol Abuse				
No	Reference		Reference	
Yes	2.95 [0.87, 9.94]	0.08	2.01 [0.89, 4.54]	0.09
BMI				
Normal/underweight [†]	Reference		Reference	
Overweight	0.31 [0.08, 1.13]	0.77	0.61 [0.29, 1.31]	0.21
Obese	1.12 [0.47, 2.66]	0.80	0.84 [0.44, 1.61]	0.61
Location				
Lower/GEJ	Reference		Reference	
Others	1.31 [0.67, 2.98]	0.37	1.24 [0.53, 2.92]	0.62
Histology				
SCC	Reference		Reference	
Adenocarcinoma	1.17 [0.60, 42.26]	0.64	1.25 [0.60, 2.59]	0.55
Grade				
1–2	Reference		Reference	
3	0.68 [0.39, 1.19]	0.18	0.71 [0.39, 1.31]	0.28
Unknown	1.16 [0.52, 2.58]	0.72	0.94 [0.38, 2.33]	0.89
Her2 status				
Negative	Reference		Reference	
Positive	1.55 [0.83, 2.90]	0.17	1.19 [0.59, 2.40]	0.62
Unknown	0.61 [0.25, 1.47]	0.27	0.77 [0.31, 1.89]	0.56
T stage				
1 or 2	Reference		Reference	
3 or 4	4.45 [1.61, 12.30]	0.004	3.06 [1.10, 8.51]	0.03
N stage				
0	Reference		Reference	
1–3	1.40 [0.74, 2.65]	0.30	1.25 [0.62, 2.51]	0.53
KPS				
81–100	Reference		Reference	
≤80	0.72 [0.43, 1.21]	0.22	0.53 [0.30, 0.95]	0.03
CCI				
≤ median	Reference		Reference	
> median	0.88 [0.50, 1.52]	0.64	0.95 [0.52, 1.76]	0.88
Induction chemotherapy				
No	Reference		Reference	
Yes	0.55 [0.25, 1.22]	0.14	1.31 [0.73, 2.36]	0.36
Duration neoadjuvant tx [median 77 (IQR 40–91)]	1.01 [1.0, 1.01]	0.10	0.99 [0.98, 1.01]	0.43
Year of treatment				
Treatment prior to 2016	Reference		Reference	
Treatment 2016 and later	1.08 [0.63, 1.83]	0.79	0.95 [0.80, 1.13]	0.56

*, Ethnicity omitted due to having only 1 Hispanic patient in this cohort. [†], 1 patient was underweight and was grouped with normal BMI to permit statistical comparison. AA, African American.

Table S2 Surgical endpoints

	IC-CRT (n=59)	CRT (n=36)	P value
Esophagectomy			0.18
Yes	31 (53)	24 (67)	
No*	28 (47)	12 (33)	
Pathologic outcomes	IC-CRT (n=31)	CRT (n=24)	
Margin status			0.38
Positive	1 (3)	0 (0)	
Negative	30 (97)	24 (100)	
pCR			
Yes	15 (48)	7 (29)	0.15
T-stage regression			0.69
Yes	21 (68)	15 (62)	
No	10 (32)	9 (38)	
N-stage regression			0.74
Yes	22 (71)	18 (75)	
No	9 (27)	6 (25)	

*, reason esophagectomy not performed (n=40): Poor functional status (n=9); Interval progression/physician decision (n=13); Patient preference (n=14); Death (n=1). IC-CRT, induction chemotherapy and chemoradiation; CRT, chemoradiation; pCR, pathologic complete response.

Table S3 Patterns of recurrence

Type of recurrence (n)	IC-CRT (n=59), n (%)	CRT (n=36), n (%)
No recurrences (n=45)	29 (49)	18 (50)
Site of first recurrence		
Local only	2 (3)	3 (8)
Regional only	1 (2)	1 (3)
Distant only	19 (32)	11 (31)
Local + regional	2 (3)	0
Local + distant	2 (3)	2 (6)
Regional + distant	3 (5)	1 (3)
Local + regional + distant	1 (2)	0
Cumulative recurrence		
Local	11 (19)	5 (14)
Regional	9 (16)	5 (14)
Distant	26 (44)	16 (44)

IC-CRT, induction chemotherapy and chemoradiation; CRT, chemoradiation.

Table S4 Surgical complications

	IC-CRT (n=59)	CRT (n=36)	P value
Hospitalization during CRT			0.30
Yes	19 (32)	8 (22)	
No	40 (68)	28 (77)	
Tx-related hospitalization			0.82
Yes	11 (58)	5 (62)	
No	8 (42)	3 (38)	
Surgical complication			0.98
Yes	18 (58)	14 (68)	
No	13 (42)	10 (27)	
Type of post-surgical complications	IC-CRT n=31	CRT n=24	
Any complication	18 (56)	14 (44)	
Rehospitalization	12 (40)	7 (29)	
Chyle leak		2	
Pneumonia		11	
Respiratory Failure		3	
Pulmonary Edema		2	
Atrial fibrillation		8	
NSTEMI		1	
Anastomotic leak		2	
Feeding/feeding tube complication		4	
Clostridium difficile		2	
Cellulitis		4	
Thrombophlebitis		1	
UTI		1	
Venous thrombosis		1	
Pain control		2	
Vocal cord injury		1	
Vascular injury		2	
Alcohol withdrawal		1	
Delirium		3	

IC-CRT, induction chemotherapy and chemoradiation; CRT, chemoradiation.