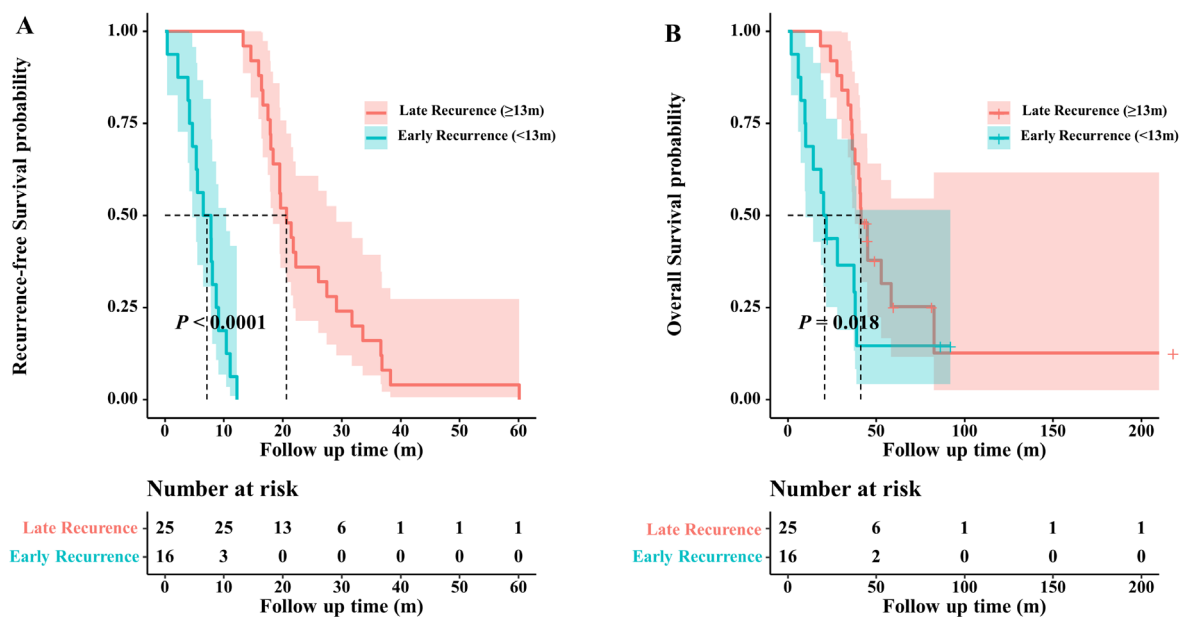
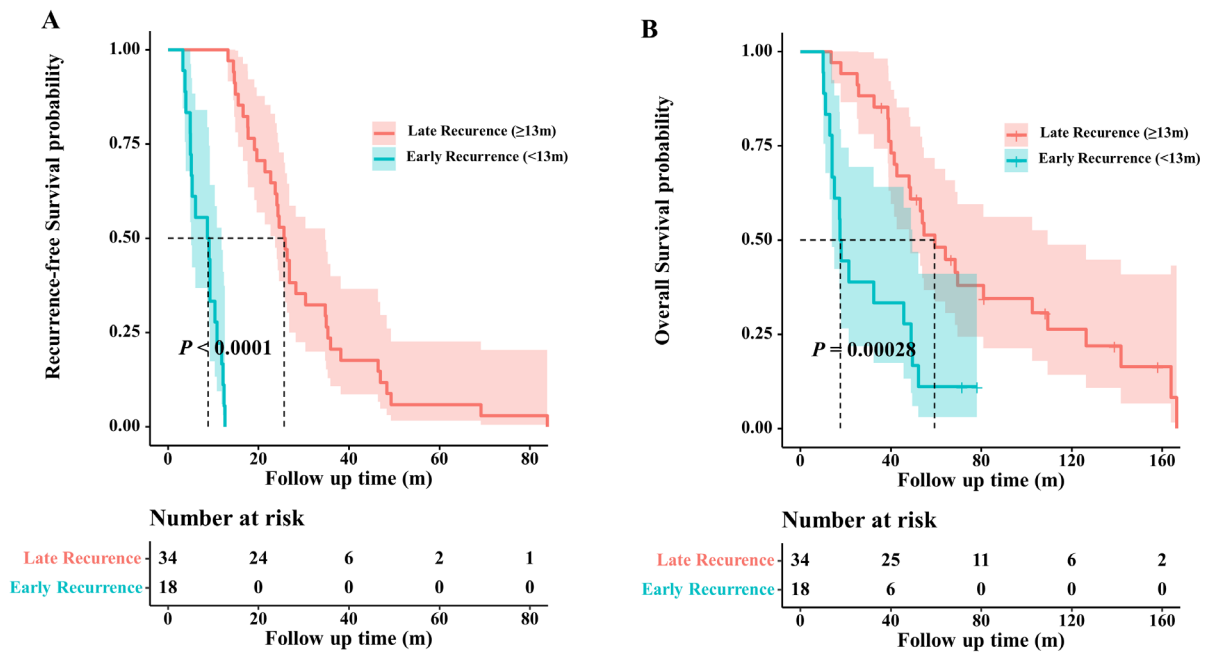


**Figure S1** Survival analysis of early recurrence (<13 m) vs. late recurrence (≥13m) in the test sample. (A) RFS analysis. (B) OS analysis. m, months; RFS, recurrence-free survival; OS, overall survival.



**Figure S2** Survival analysis of early recurrence (<13 m) vs. late recurrence (≥13 m) in GSE103479 cohort. (A) RFS analysis. (B) OS analysis. m, months; RFS, recurrence-free survival; OS, overall survival.



**Figure S3** Survival analysis of early recurrence ( $< 13$  m) vs. late recurrence ( $\geq 13$  m) in GSE106584 cohort. (A) RFS analysis. (B) OS analysis. m, months; RFS, recurrence-free survival; OS, overall survival.