

Figure S1 Comparison of the interval time of closure after primary surgery, BMI, and neoadjuvant therapy status between major LARS and non-major LARS groups in the training set. (A) The interval time of closure after primary surgery (mean time of 107 days for non-major LARS groups versus 205 days for major LARS groups; $P < 0.001$). (B) BMI (mean BMI of 22.4 kg/m² for non-major LARS groups versus 23.4 kg/m² for major LARS groups; $P = 0.007$). (C) Neoadjuvant therapy status (10 for non-major LARS groups versus 38 for major LARS groups; $P < 0.001$). LARS, low anterior resection syndrome; BMI, body mass index.

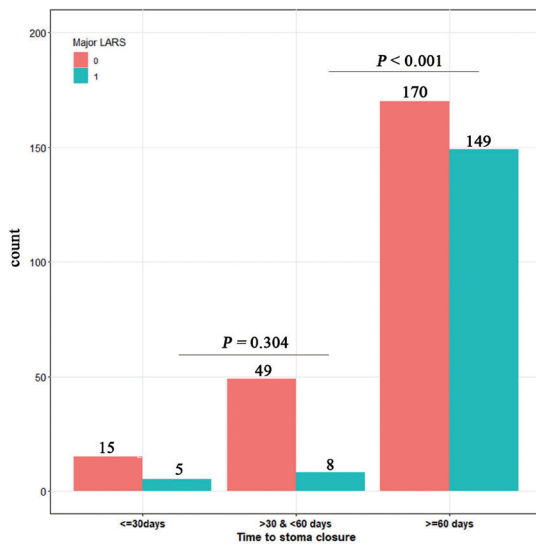


Figure S2 Relationship between the timing of stoma closure and major LARS. LARS, low anterior resection syndrome.