

Figure S1 Survival outcomes of immune-checkpoint inhibitors[†] (ICI) after ramucirumab plus paclitaxel when programmed cell death-ligand 1 (PD-L1) combined positive score (CPS) cutoff 10. (A) Progression-free survival; Among patients with PD-L1 CPS ≥10, those who underwent ICI therapy and experienced censoring, as of June 1, 2023, are demonstrating a continuous and lasting response. (B) Overall survival. [†], immune-checkpoint inhibitors include nivolumab and pembrolizumab.

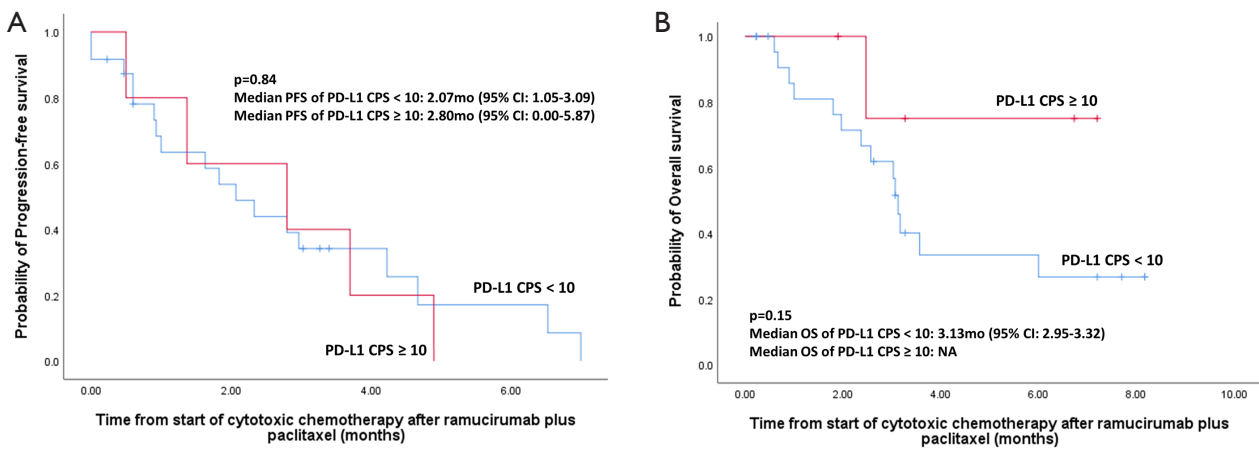


Figure S2 Survival outcomes of cytotoxic chemotherapy[‡] after ramucirumab plus paclitaxel when programmed cell death-ligand 1 (PD-L1) combined positive score (CPS) cutoff 10. (A) Progression-free survival. (B) Overall survival. [‡], cytotoxic chemotherapy includes FOLFIRI (5-FU, leucovorin, irinotecan), EP (etoposide, cisplatin) and irinotecan monotherapy.