

Supplementary

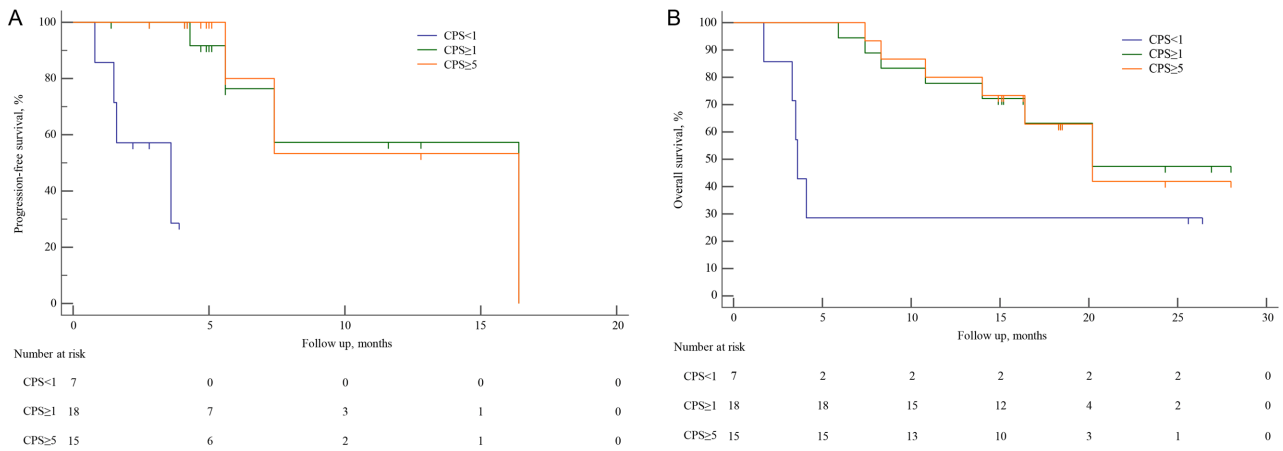


Figure S1 Progression-free survival (A) and overall survival (B) at PD-L1 CPS <1, CPS ≥1, or ≥5. CPS, combined positive score; PD-L1, programmed cell death ligand 1.

Table S1 Cycles of camrelizumab

Cycles of camrelizumab	Patients, n (%)
2	3 (12.0)
3	2 (8.0)
4	3 (12.0)
5	1 (4.0)
6	6 (24.0)
7	5 (20.0)
9	1 (4.0)
11	1 (4.0)
13	1 (4.0)
16	1 (4.0)
17	1 (4.0)

Table S2 Cycles of chemotherapy

Cycles of chemotherapy	Patients, n (%)
2	4 (16.0)
3	1 (4.0)
4	3 (12.0)
5	2 (8.0)
6	7 (28.0)
7	6 (24.0)
8	2 (8.0)