

Appendix 1

Search strategy

PubMed

```
"surface expressed protease"[tw] OR  
"seprase"[tw] OR  
"FAPalpha"[tw] OR  
"fibroblast activation protein-alpha"[tw] OR "FAP protein"[tw] OR  
"fibroblast-activating protein"[tw] OR  
"fibroblast proliferation factor"[tw] OR  
"fibroblast activation protein, alpha"[tw] OR  
"fibroblast activation protein"[tw] OR  
"seprase protein"[tw]  
AND  
"neoplasms"[Mesh]
```

Web of Science Core Collection (all field)

```
("surface expressed protease" OR  
"seprase" OR  
"FAPalpha" OR  
"fibroblast activation protein-alpha" OR "FAP protein" OR  
"fibroblast-activating protein" OR  
"fibroblast proliferation factor" OR  
"fibroblast activation protein, alpha" OR  
"fibroblast activation protein" OR  
"seprase protein")  
AND  
("tumor" OR "neoplasm" OR "tumors" OR "neoplasia" OR "neoplasias" OR  
"cancer" OR "cancers" OR "malignant neoplasm" OR "malignancy" OR  
"malignancies" OR "malignant neoplasms" OR "neoplasm, malignant" OR  
"neoplasms, malignant")
```

Cochrane library (title, abstract, keyword)

```
("surface expressed protease" OR  
"seprase" OR  
"FAPalpha" OR  
"fibroblast activation protein-alpha" OR "FAP protein" OR  
"fibroblast-activating protein" OR  
"fibroblast proliferation factor" OR  
"fibroblast activation protein, alpha" OR  
"fibroblast activation protein" OR  
"seprase protein")  
AND  
("tumor" OR "neoplasm" OR "tumors" OR "neoplasia" OR "neoplasias" OR  
"cancer" OR "cancers" OR "malignant neoplasm" OR "malignancy" OR  
"malignancies" OR "malignant neoplasms" OR "neoplasm, malignant" OR  
"neoplasms, malignant")
```

Condition or disease:

Neoplasms

Other terms:

"surface expressed protease" OR

"seprase" OR

"FAPalpha" OR

"fibroblast activation protein-alpha" OR "FAP protein" OR

"fibroblast-activating protein" OR

"fibroblast proliferation factor" OR

"fibroblast activation protein"

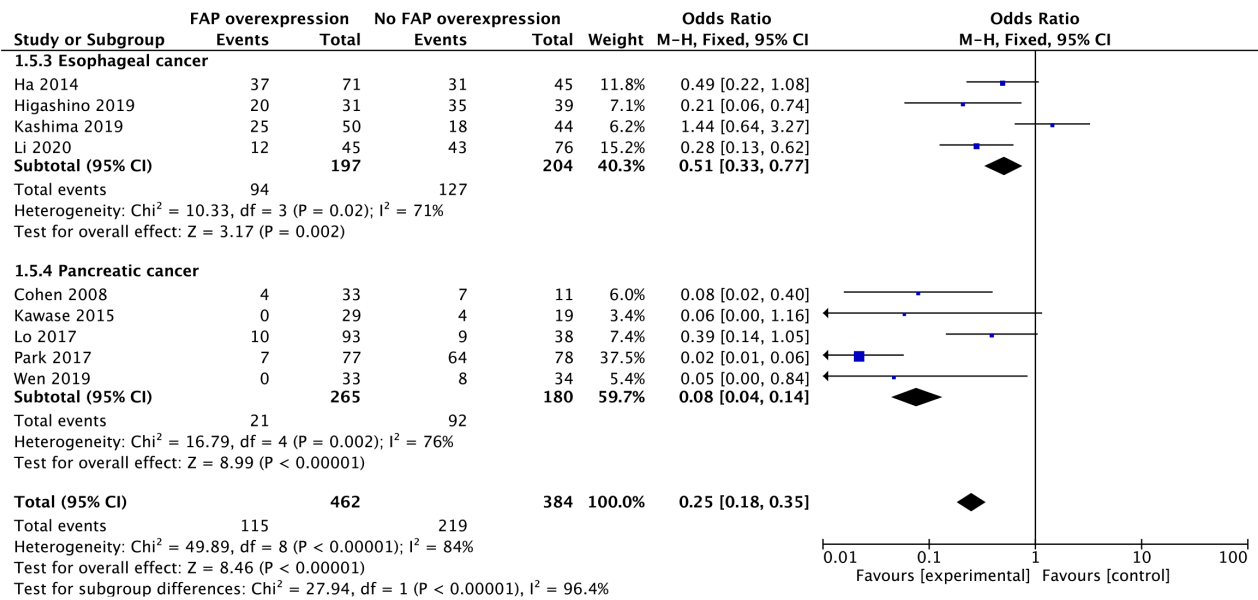


Figure S1 Forest plot of OR with 95% CI for 1-year survival rate. The pooled ORs for esophageal and pancreatic cancer was calculated by using the random effect model. The ORs presented are FAP overexpression *vs.* no FAP overexpression. Heterogeneity was presented as I^2 . FAP, fibroblast-activation protein; M-H, Mantel-Haenszel; CI, confidence interval; OR, odds ratio.

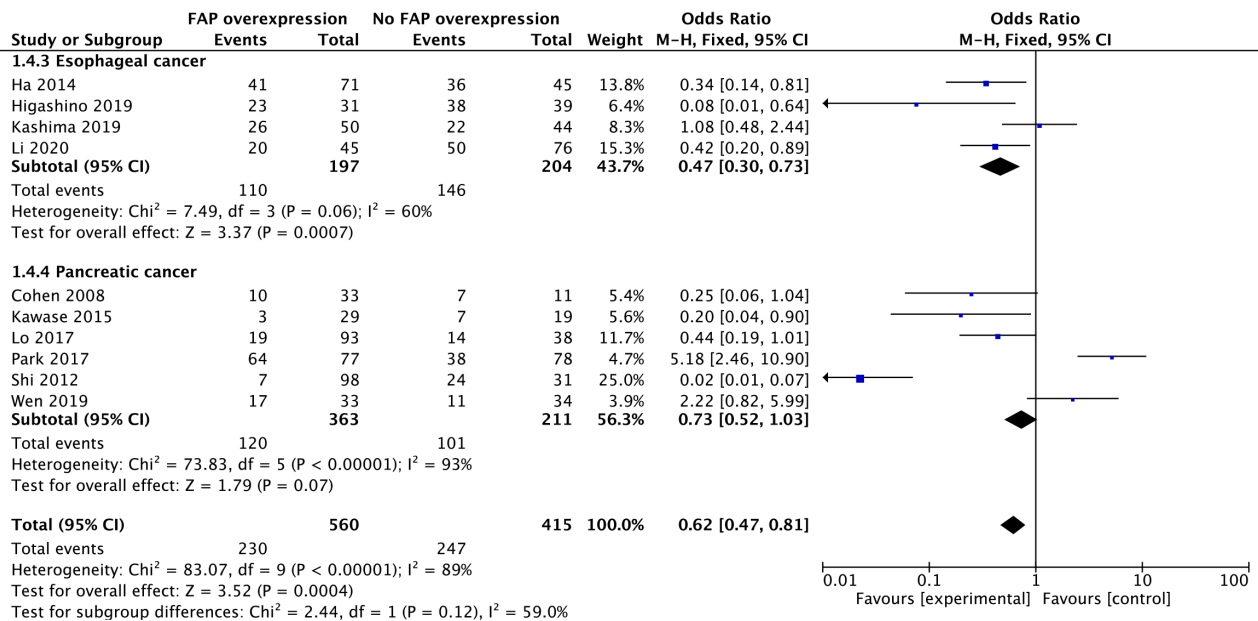


Figure S2 Forest plot of OR with 95% CI for 2-year survival rate. The pooled ORs for esophageal and pancreatic cancer was calculated by using the random effect model. The ORs presented are FAP overexpression *vs.* no FAP overexpression. Heterogeneity was presented as I^2 . FAP, fibroblast-activation protein; M-H, Mantel-Haenszel; CI, confidence interval; OR, odds ratio.

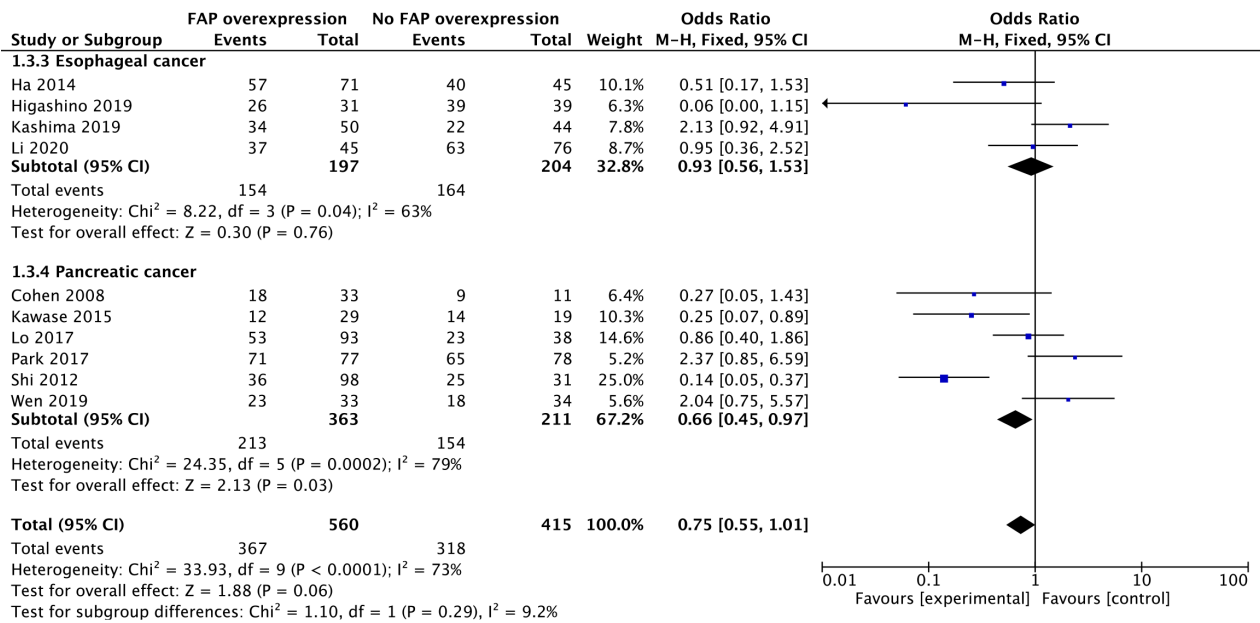


Figure S3 Forest plot of OR with 95% CI for 3-year survival rate. The pooled ORs for esophageal and pancreatic cancer was calculated by using the random effect model. The ORs presented are FAP overexpression *vs.* no FAP overexpression. Heterogeneity was presented as I². FAP, fibroblast-activation protein; M-H, Mantel-Haenszel; CI, confidence interval; OR, odds ratio.

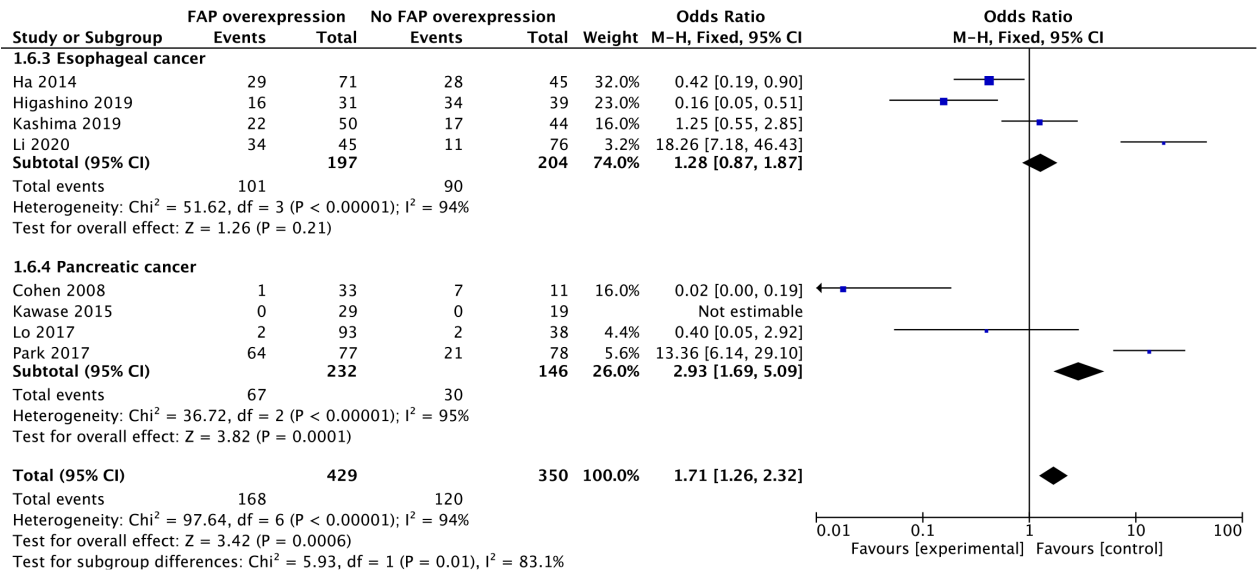


Figure S4 Forest plot of OR with 95% CI for 5-year survival rate. The pooled ORs for esophageal and pancreatic cancer was calculated by using the random effect model. The ORs presented are FAP overexpression *vs.* no FAP overexpression. Heterogeneity was presented as I². FAP, fibroblast-activation protein; M-H, Mantel-Haenszel; CI, confidence interval; OR, odds ratio.